



**Board of Trustees Minutes for  
October 24, 2024 @ 4pm (zoom)**

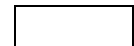
1	Call to Order and Evocation	Pg 2	Maria	5 min
2	Visioning	Pg 2	Chris	15 min
3	Check In	Pg 2	All	5 min
4	Last Month's Minutes	Pg 2	Done	0 min
5	Call to Audience	Pg 2	Maria	10 min
6	Current Financial reporting		Janet/Board	
6a	Finance/Stewardship Report	Pgs. 11-14	Janet	10 min
6b	CD status			
6c	Bank Signatures			
	SOM Endowment termination			
	Range report			
	Administrative Assistant			
	Purchase of Smart Phone			
7a-b	Current Business Items	Pg 3	All	10 min
	911 S. Craycroft (office) update			
	LTW update			
8a-k	New Business	Pg. 3-4	All	15 min
	Transition of Board			
	Next Board meetings			
	Annual meeting			
	CSLT Leadership and Unity Board			
	Camino Blanco			
	Admin Software update			
	Weekly Updates			
	Return of Rainshower			
	2025 Calendar			
	Seed/Manifestation list			
9	Sunday Gratitudes	Pg 4	All	10 min
10	Responsible Board Member Schedule	Pg 4	All	10 min
11	Newsletter Articles	Pg 4	All	2 min
12	Calendar review	Pg 5-6	All	10 min
13 a-j	<b>Updates</b>	Pg 7-10	All	10 min
	Education			
	Youth			
	Board Liaisons			
	Community & Growth			
	CSLT Online Community Presence			
	Newsletter Statistics			
	Morning Meditation			
	Small Groups			
	Advertise			
	Directory			
	CSL Connection Call			
	Spiritual Living Circles			

	Leadership Training			
	Outreach			
14a-b	The 2024-2025 Planning Cycle Planning Meeting Needed? Guest Speakers Tabled Items	Pg 7	All	2 min
15	Team Reports	pg. 8-10		

Present: Maria Schuchardt, Janet Salese & Madeline Pallanes through the transition to the new Board.  
Rev. Rhoni Tretsven, Mariann Moery, Chris Wheeler, Linda Bullock, Sharon Whealy, RScP.

Absent: none  
Guests: none

**Center for Spiritual Living Tucson**  
**Board of Trustees Minutes for**  
**October 24, 2024 @ 4pm (zoom)**



**1 Call to Order/Evocation**

Maria

**2 Visioning**

Chris

**Q: What is the Highest Vision or Highest Ideal for the Center for Spiritual Living Tucson?**

FAIR; Swing Set with 2 swings, Room full of happy faces, the word “ROAR”, high energy, fountain shooting upwards, Perfect divine order, Full moon emerging from clouds; Small songbird, Field of flowers buzzing with bees; Growth, fun, play, unlimited potential, Classic snowman, purple, people.

**Q: What must be released, embraced, or become for us to live this highest vision?**

Release Dog Leash, People streaming in to us, Saguaro cactus, Flowing river, Sports car driving down an open highway, Release: My ideas of what's next; Embrace: the something new that wants to emerge, Become: engaged, Sluice gate in gold panning open letting water through, daisies.

**Q: Is there anything else that wants to be known, understood, or realized? What else?**

Little girls in pretty dresses, Huge freestanding CSLT floating, Hearts of different shapes and sizes, Allow, Dirt, saguaro with owl standing on the arm, ,blue skies, starry nights.

<b>3 Checking In (briefly, please)</b>	All
<b>4 Last Month's Minutes</b>	Done
<b>5 Call to Audience</b>	Maria
<b>6 Financial/Stewardship Report -</b>	Janet
<b>6a Current Financial Reporting</b>	Janet
<b>6b CD Accounts maturity dates:</b> Our \$50K CD at VWCU matures 11/5/24. To be reinvested when Rev. Rhoni & Mariann have signing authorization. The \$45K CD at Chase was reinvested for 3 months at 4.25% maturing on 11/24/24. The interest will go into Chase general operating account and then will be transferred (is a cslt action required?) to Vantage West general operating account. The \$100k CD at Vantage West Credit Union (VWCU) matures on 1/25/2025.	
<b>6c Bank Signatures.</b> Rev. Rhoni and Mariann will become the authorized signatures.	
<b>6d Current Financials</b> Discussed as part of 6a.	
<b>6e SOM Endowment termination update:</b> After waiting for signatures at CSL, the money less minimal administrative charges should be transferred to CSLT the week of 10/28-11/1/24. It will be invested in a CD.	

<b>6f Range Report:</b> This report will be simplified, keeping the pertinent data and history.
<b>6g Administrative Assistant:</b> Tabled until net income increases to cover the expense as budgeted.
<b>6h Purchase of Smart Phone:</b> It was approved to purchase a ‘smartphone’ and transfer our current landline number to that phone to facilitate verifications and responding more quickly to incoming calls.
<b>7 Current Business Items</b>
<b>7a 911 S Craycroft facility:</b> 1. Realtor update: Kelly Doty from Long Realty presented and was authorized to put 911 S Craycroft on the market on 11/15 at \$339,000 – dependent on Member approval of the Sale - scheduled for a vote to authorize after Service on 11/10. If approved both agents would receive 3% 2. Cleaning out back room: Rev. Rhoni, Chris, Linda and Mariann will begin the 911 declutter project on Tuesday, 10/29. 3. Sharon to research shredding CSLT documents. 4. Unity has offered pre-move storage space.
<b>7b Live Theater Workshop (LTW):</b> Janet has given them written notice that we are unlikely to renew our contract ending 12/31/24. December 22nd Service will be in the Main Stage auditorium
<b>8 New Business</b>
<b>8a Transition of Board:</b> Sharon Whealy, RScP, was welcomed to the Board for a 3-year term. Officers for the next year were elected by unanimous vote: President: Mariann Moery; Vice-President: Chris Wheeler; Treasurer: Linda Bullock; Secretary: Sharon Whealy, RScP. All present expressed true gratitude and appreciation for the extended terms of Service by the members leaving the Board: Maria Schuchardt, Janet Salese, Madeline Pallanes. 1. New credit card authorizations are needed. 2. All email & telephone links to be changed to CSLT Not connected to an individual.
<b>8b Next Board Meeting</b> Thursday, 11/21 at 4 p.m. The mid-month meeting is November 10 following the Member Vote.
<b>8c Annual meeting</b> The full report is available on the CSLT website > About >Organizational Documents.  The attendees of the annual meeting were informed of the desire to move to the Unity campus. The project has been named “Camino Blanco”. (Attached as a separate document are notes Mariann took of the meeting. These have also been published in the CSLT Newsletter.) If we proceed, there will be a special meeting on 11/10/24 to vote on the approval to sell the 911 S Craycroft space. As always, only Members will have true votes, though all will have a chance to share their opinion.  Rev. Rhoni and the Board look forward to hearing from our members and larger community in respect to this possibility.
<b>8d CSLT leadership and Unity’s Board meeting 10/20/2024:</b> CSLT Leadership: Rev. Rhoni, Janet, Linda, Chris, Sharon, Robie-Jean, Tamara & Mariann met with members of the Unity Board and discussed potential logistics and outlined items for follow-up between the two groups as we explore the possible move. Both groups are committed to maintaining their individual identities while sharing space.
<b>8e Camino Blanco update:</b> The Board approved the Sale of 911 and confirmed November 10 <sup>th</sup> as a Member meeting to vote on approval of the sale. There are discussions to coordinate the move and future space and storage needs. If approved, target date to be at Camino Blanco is January, 2025.
<b>8f Administration Software Update</b> The Board approved the transition to Breeze for Bookkeeping & Accounting as well as additional support opportunities. There is a monthly subscription of \$72. The data must be downloaded from Servant Keeper to the new software before the end of the year so that we have the data. Breeze software will download for free.
<b>8g Weekly events update:</b>

Wednesday Evening - T'ai Chi continues Visioning Class - completes 10/29/24 This Thing Called You - ongoing
<b>8h Return of Gratitude Rainshower.</b> Fourth Tuesdays at 6:30 on Zoom. The 10/22 Visioning class joined the Gratitude Rainshowers during class.
<b>8i 2025 Calendar</b> Orders are being taken
<b>8k Seed/Manifestation list</b>
Admin Assistant
Office cleaning would cost ~ \$250 a month.
Website update
Leadership Training Opportunities for Board Members

**9 Sunday Gratitudes**

Date	Honoree (and what the board member would like to add)
10/27	Dia de los Muertos Rev R welcomes Sharon to Board
11/3	Birthdays & Anniversaries
11/10	Remembering all who have served and those who make it possible.
11/17	Unity welcoming us
11/24	Thanksgiving

**10 Responsible Board Member @LTW Schedule (Before:** Set up at the LTW (instructions are in the blue money bag). **After:** take money bag to office and put in the safe, dust, take out recycling and trash)

**10.1 Host rotation: 1** Morgana, **2.** Jeff **3.** Marya **4.** Linda **5.** Marya

**10.2 In person Practitioner rotation 1.**      **2.** Sharon **3.** Robie-Jean **4.** Tamara

**10.4 Greeters 1.** Michelle **2.** Jeff **3.** Theresa **4.** Sandy **5.** Janet

Date	Board Member in charge/gratitude	Practitioner in person/Zoom	Host	Book store	Greeter From Schedule	Notes
<b>10/27</b>	New board member	Tamara	Jeff	Yes	Sandy	Rev. R welcomes Sharon to the Board
<b>11/3</b>	Linda B	Robie-Jean	Morgana		Michelle	
<b>11/10</b>	Mariann	Sharon	Linda	Yes	Jeff	Member vote on Sale
<b>11/17</b>	Linda B	Ruth	Marya		Theresa	
<b>11/24</b>	Mariann	Tamara	Linda	Yes	Sandy	

**11 Newsletter Articles: Rotation:** \*Sharon \*Mariann \*Rev Rhoni \*Chris \*Linda

10/27. Linda

11/03 Sharon

11/10 Mariann

11/17 Rev. Rhoni

11/24 Chris

**Calendar begins on next page.**

12 Calendar Review

Office/In Person

Zoom

Office/Zoom

Board

Not in town

October 2024						
Sunday	Monday	Tuesday	Wednesday	Thursday	Friday	Saturday
	Rev R ~10 – 4	1 Rev R ~10 – 4 Vision Core (z) 6:30pm 5:30 – 7:30 Visioning class	2 Rev R ~10 - 4 6:00 T'ai Chi	3 Rev R ~10 - 4 9-10:30 Men 11:30 – 1:00 Robie-Jean	4	5
20 Sunday Service LGBTQ Coffee 10:45 Mastermind 1pm Sacred Cinema 2	21 Rev R ~10 – 4 Janet ~10-1	8 Rev R ~10 - 4 5:30 – 7:30 Visioning class	9 Rev R ~10 – 4	10 Rev R ~10 - 4	11	12
13 Annual Meeting at noon	14 Janet ~10-4 Rev R ~10 - 4	15 Rev R ~10 – 4 5:30 – 7:30 Visioning class	16 Rev R ~10 – 4 6:00 T'ai Chi	17 Rev R ~10 - 4 9-10:30 Men 11:30 – 1:00 Robie-Jean	18 Janet 1:00 – 5:00	19
20 Service  No Lunch Bunch	21 Rev. R	22 Rev R ~10 – 4 5:30 – 7:30 Visioning class Gratitude Rainshower at 6:30 during visioning	23 Rev R ~10 – 4 6:00 T'ai Chi	24 Rev R ~10 - 4 9-10:30 Men 11:30 – 1:00 Robie-Jean Board Mtg (z), 4pm	25	26
27 Lunch Bunch	28 Rev R ~10 – 4	29 Rev R ~10 – 4 911 Clean-up 10:00 5:30 – 7:30 Visioning class	30 Rev R ~10 – 4 6:00 T'ai Chi	31	November 1	Nov. 2
November 2024						
Sunday	Monday	Tuesday	Wednesday	Thursday	Friday	Saturday
11/1 Sunday Service Mastermind 1pm	4 Rev R ~10 - 4	5 Rev R ~10 - 4 Vision Core (z) 6:30pm	6 Rev R ~10 – 4 6:00 T'ai Chi	7 Rev R ~10 - 4 9-10:30 Men 11:30 – 1:00 Robie-Jean	8	9

<b>10</b> Sunday Service  Member meeting <b>Vote Sale of 911</b>  Mid-month board Meeting @ 12	<b>11</b> Rev R ~10 - 4	<b>12</b> Rev R ~10 - 4	<b>13</b> Rev R ~10 - 4  6:00 T'ai Chi	<b>14</b> Rev R ~10 - 4	<b>15</b>	<b>16</b>
<b>17</b>  Sunday Service LGBTQ Coffee 10:45  <b>Mastermind 1pm</b> <b>Sacred Cinema 2</b>	<b>18</b> Rev R ~10 - 4	<b>19</b> Rev R ~10 - 4	<b>20</b> Rev R ~10 - 4  6:00 T'ai Chi	<b>21</b> Rev R ~10 - 4 9-10:30 Men  <b>11:30 - 1:00</b> <b>Robie-Jean</b> <b>Board Mtg</b> <b>(z), 4pm</b>	<b>22</b>	<b>23</b>
<b>24</b> <b>Lunch Bunch</b>	<b>25</b> Rev R ~10 - 4 <b>Linda away</b>	<b>26</b> Rev R ~10 - 4 <b>Linda away</b>	<b>27</b> Rev R ~10 - 4 <b>Linda away</b>  6:00 T'ai Chi	<b>28</b> <b>Thanksgiving</b> <b>Linda away</b>	<b>29</b> <b>Linda away</b>  <b>29</b>	<b>26</b> <b>Linda away</b>

December 2024						
Sunday	Monday	Tuesday	Wednesday	Thursday	Friday	Saturday
<b>12/1 Service</b> <b>Linda away</b>	<b>2</b> Rev R ~10 - 2	<b>3</b> Rev R ~10 - 2  <b>Vision Core</b> <b>(z) 6:30pm</b>	<b>4</b> Rev R ~10 - 2	<b>5</b> Rev R ~10 - 2 9-10:30 Men <b>11:30 - 1:00 Robie-Jean</b>	<b>6</b>	<b>7</b>
<b>8</b> Sunday Service <b>Mastermind 1pm</b>	<b>9</b> Rev R ~10 - 2	<b>10</b> Rev R ~10 - 2	<b>11</b> Rev R ~10 - 2  6:00 T'ai Chi	<b>12</b> Rev R ~10 - 2	<b>13</b>	<b>14</b>
<b>15</b> Sunday Service <b>Mid-month board Meeting @ 12</b>	<b>16</b> Rev R ~10 - 2	<b>17</b> Rev R ~10 - 2	<b>18</b> Rev R ~10 - 2  6:00 T'ai Chi	<b>19</b> Rev R ~10 - 2 9-10:30 Men <b>11:30 - 1:00 Robie-Jean</b>  <b>Board Mtg (z), 4pm</b>	<b>20</b>	<b>21</b>
<b>22</b> <b>LGBTQ Coffee</b> 10:45  <b>Mastermind 1pm</b> <b>Sacred Cinema 2</b>	<b>23</b> Rev R ~10 - 2	<b>24</b> Rev R ~10 - 2	<b>25</b> Christmas	<b>26</b> Rev R ~10 - 2  <b>11:30 - 1:00 Robie-Jean</b>	<b>27</b>	<b>28</b>
<b>29</b> <b>Lunch Bunch</b>	<b>30</b> Rev R ~10 - 4	<b>31</b> Rev R ~10 - 4	<b>January 2025</b> New Year's Day	<b>1/2/25</b>	<b>1/3/25</b>	<b>1/4/25</b>

<b>13a Education</b> Details on page 9.		
<b>13c Board Liaisons</b>	To be reassigned with new Board.	Board
<b>13d Community</b>	No change at this point	Board
<b>Credo:</b> CSLT inspires spiritual expression in community with all and offers an accepting, loving, and peaceful way of living a joyful, healthier, and more abundant life.	Have you checked with your team members or leaders to see how they are doing? Would any of your teams appreciate more volunteers?	Liaison to teams
<b>CSLT Online Community Presence:</b> <u>Zoom account:</u> There is one CSLT Zoom account. There is an average of 11 participants. <u>YouTube:</u> 296 subscribers, 250 videos (9/25/24) 260 subscribers, 234 videos posted (6/27/2024) 245 subscribers, 220 videos posted (4/22/24) 244 subscribers, 215 videos posted (3/124/24) 234 subscribers, 209 videos posted (2/14/24) <u>Facebook:</u> 1K likes, 1K followers (6/27/2024) 997 likes, 1K followers (4/22/24) 972 likes 1K followers (3/24/24), 963 likes 1,000 followers (2/14/24) <u>Instagram:</u> 249 posts 164 followers, 95 following		
<b>Newsletter Statistics: September 2024</b> Four newsletters were sent during September to between 561-564 subscribers. Between 270-287 people (51-54%) opened them, and 8-18% of those who opened also clicked on something for further reading.		
<b>Morning Meditation.</b> Daily practice continues. The current leaders have agreed to continue the daily morning practice until further notice. We know that those participating get good value from the practice, and we/they are open to having others join in as they feel intrigued and called. There is an average of 6 attendees per day. 😊		
<b>13e Small Groups</b>		
<b>Mastermind Group</b> meets twice monthly		
<b>Men's Group</b> , which was begun in 2014(!) meets twice monthly in person, with some participants joining the conversation from a shared zoom room. This is a closed group.		
<b>Sacred Cinema</b> Meets on the third Sunday of the month at 2 pm on Zoom.		
<b>Lunch Bunch</b> meets the fourth Sunday at Bashas.		
<b>LGBTQ Coffee</b> Changed to meeting on the 3rd Sunday. There are 4 – 6 participants. Started August 2023.		
<b>13f Other Places We Might Advertise? –</b>		
<b>13g Directory</b> – Janet turned the Directory over to Rev Rhoni. New sign-up sheet will be at greeter's desk.		
<b>13h CSL Connection Call</b> (3 <sup>rd</sup> Monday of month) Details below		
<b>13i Spiritual Living Circles (every other Thursday)</b>		
<b>13j Outreach/In-person marketing?</b>		
<b>14 2024-2025 Planning Cycle</b>		
<b>14a Planning Mtg?</b> (none needed at this time)		
<b>14b Guest Speakers</b> 5 <sup>th</sup> Sundays Rev. Rhoni & Sharon keep the calendar		

<b>Tabled Items</b>	Next steps for Consolidated Community Campus: Further discussion of this item is tabled until Center and community growth clarifies our needs. 😊
	Small group Requirements - Further discussion of this topic tabled for now.
	Paid Administrative support in the office, deferred until new minister arrives.

**15 Team Reports**

Pages 8-10

**Adjourn and Pray Out**

**Board of Trustees Minutes for  
October 24, 2024 @ 4pm (zoom)  
Team Reports**

**ADMINISTRATION**

Submitted by Maria Schuchardt

Janet is handing over some tasks to Rev. Rhoni. An Administrative Assistant is being manifested.

**ALTARED STATES**

Submitted by Maria Schuchardt

Mariann Moery has become liaison for Altared States. Team members provide beautiful arrangements for Sunday services. If you wish to provide flowers in honor of a special event or a loved one, contact Barbara Arissa or another member of this team.

**CSL Spiritual Living Circles**

Open

**CSL Connection Call**

Submitted by Linda Bullock

This morning I attended the monthly CSL Connection Call. Primary topics were the Practitioner Council and the status of the Science of Mind magazine.

> Robin Rice Olmstead represented the Practitioner Council and provided an overview of the Council's activities. The Council recently lost one member and will lose 2 more so an election will be held to replace those individuals. One ongoing project is Sensational Saturdays, an hour and a half get-together for practitioners where they share what's being done. Workshops have been presented from all over the world. Attendance varies from 30 to 80 participants. Each session has a simultaneous Spanish translation. The Council wants to connect with all practitioners including those who are Global. In the new year there will be a larger Sensational Saturday where CSL Spiritual Leader Soni Cantrell-Smith will give an updated charge to the group. Another project is Prayer Match where practitioners can be matched with a prayer partner if needed. Eighty newly licensed practitioners were welcomed in August. There are currently 2287 practitioners in CSL.

> Update on sale of CSL building: The building did not sell at the recent auction because the minimum bid was not met. Leadership is continuing meetings with realtors.

> Holli Sharp discussed the current situation for the Science of Mind magazine. As previously disclosed the magazine has been operating at an unsustainable financial loss. There are currently 17,000 subscribers. The double issue format, instituted a year ago, saves \$80,000 annually. Switching to quarterly printing would save an additional \$30,000 per year. More readers and advertisers are needed.

CSL communities are asked to help increase number of subscribers to the magazine by making announcements in services and in newsletters. With rate increases of \$1/month or \$2 per double issue, current cost of print edition is \$48.95 per year. Subscription to the digital format is encouraged. This format permits downloads and provides organizational tools. The November/December print edition will be delayed but Daily Guides will be available online. There will be a survey in early 2025 to analyze readership. There is intention to get the magazine back on substantial financial footing. The magazine is approaching 100 years old, and its



continuation is very important to many CSL members. There was a lot of discussion and suggestions from those on the call. It will be discussed again on the November CSL Connection Call.

## **ECCLESIASTICAL CORE**

**Submitted by Rev Rhonda**

1. Continuing to monitor PM progress/Pastoral Care
2. Project: Michael Z has us all involved in creating chants, meditations, readings, feel good stuff to post on Facebook, YouTube, and Website. This is designed to draw people into our website and our Sunday celebrations. Create interest.
3. Robie-Jean is facilitating a book study on Thursdays – This Thing Called You
4. Prayer Requests are being handled by the Practitioner of the Day/Sunday. These are then sent out to the core for continued prayer.

## **EDUCATION CORE**

**Submitted by Rev. Rhonda**

### **Future classes:**

1. Science of Mind 1938 Textbook year study/**January 2025. Timing after move & Foundations or?**
  2. Science of Mind 1926 Textbook year study/**January 2025.**
- \*each one will be a different day and time for people to choose the version they want to study

### **Education:**

1. **Vision** Class concludes October 29.
2. **January/Foundations** Class/will be a different class format.
3. **December Service: The True Story of Christmas – History of what the Bible doesn't tell us/4weeks.**  
This will parallel the Advent season that starts the weekend of Thanksgiving.

### **Future Plans: Holidays/Holy Days**

- Thanksgiving Eve Service with Unity/Potluck at Unity's venue
- \*Christmas Eve
- Winter Solstice Celebration/Sunday and Evening Candlelight Service
- Endings/Beginnings

\*Possible collaboration with Unity/Potluck

**HOSTS** Submitted by Mariann Moery Marya Wheeler is team leader, Morgana Campbell, Jeff Jackson, Linda Bullock. Marya is looking for another host.

## **MINISTER'S TRAVEL PLANS**

### **MUSIC/SOUND**

Submitted by Mariann Moery

Michael Zimmerman is the Musical Director, with band members Chris Wheeler on percussion, James Gunn on bass. Stephen Frankenfield and Tina Evens are our techs when we are at LTW.

### **Vision Core Notes** October

Submitted Chris Wheeler

**What is the Highest Vision or Highest Ideal for the Center for Spiritual Living Tucson?** To be a louder voice promoting New Thought: Thriving, exciting, energetic and filled with metaphysical people it supports and

loves, an expanding spiritual community An organized outline; consistency: Highest-Flip chart graph with arrows going every which way morphed into Rev Rhoni standing beside flip chart with graph showing one arrow going up: New Attendees, Fellowship before and after service, Classes full of participants - hybrid outside of Tucson and Arizona, Abundant \$ flow, More practitioners, Regular events - monthly potlucks on Sunday.

**What must be released, embraced, or become for us to live this highest vision?** Holmes lecture style, Mexican sunflowers, Roiling water in the Rillito like during the 100-year floods: Go bigger!: Release-Gravel parking lot; Individuals talking in Craycroft office: Outreach increases through additional channels, Member excited sharing our experiences, Outreach to younger populations, Resources for younger populations, academics.

**Is there anything else that wants to be known, understood, or realized? What else?** Colorful native weaving like a belt, chocolate milk, tiny diorama, manta rays, owl in a Saguaro, desert raptors: It's all God and it will align as it should as we move up and allow one light to shine: Be peaceful: Embrace-Feeling of belonging, coming together: Spirit guides us - we trust & relax, Little effort, organic experience.

Bonus Answers:

4-Become-Scarecrow, Driving a car, sun shining, window down, hair blowing

5-Other-Dairy cow in a milking barn

**Financial Reports from Janet Salese begin on the next page.**

## Finance/Stewardship Report

Treasurer, Janet Salese

Executive Summary: September was a 5 Sunday month. On average in September, we had 37 in-person and 7 on YouTube Live, for a total average of 44, numbers holding steady.

The Board continues to vision for a growing Center. The Board has agreed to sustain and hold the vision of increased attendance by individuals willing and able to participate (in all ways and on many levels), which allows us opportunities to expand our reach in Tucson.

	Total Offerings and P+	New Designated Monies*	Total Income	Total Expenses	Net Operating Income	\$ per Weekly Attendee	Average Weekly Attendance
Sept	\$8,568	<\$1,000>	\$9,471	\$9,509	<\$38>	\$42.75	43+
August	\$4,652	<\$245> π e,	\$5,797	\$8,193	<\$2,396>	\$27.59	44+
July	\$5,567	<\$1,000>π	\$9,065	\$10,677	<\$1,612>	\$28.75	43+
June	\$5,898	\$46,939Ω	\$6,824	\$9,633	<\$2,809>	\$30.62	41+

\*Presently we have a stand-alone Facility Fund, Scholarship Fund, a Practitioner Fund, an Opportunity Fund. All are designated and are kept separated from Total Income or Total Expenses. ≠ \$1,517 increase in Endowment less mortgage payment less \$5,000 Rev Rhonda moving allotment (recorded in Feb., transfer made in March). @ \$329 correction to Endowment, CD interest transferred to Gen Op, Mortgage5. e, Endowment increase. Ω Final payment on the land. π Mortgage payment & interest earned.

Cash Balances	September	August	July	June
Chase General Ops Checking	21,243	\$17,527	\$17,527	\$16,218
Vantage W. Gen Ops Checking-32§	16,785	\$19,024	\$21,861	\$26,534
Vantage W. Additional Savings-03	23,148	\$23,145	\$22,730	\$23,139
Vantage W. Education Savings-02	1,833	\$1,833	\$1,832	\$1,832
VWCU Practitioners' Savings	\$412	\$412	\$412	\$412
<b>SubTotal</b>	<b>\$63,421</b>	<b>\$61,941</b>	<b>\$64,362</b>	<b>\$68,135</b>
Chase Facility Fund Savings	3,443	\$3,443	\$3,443	\$3,443
Vantage W. Facility Fund Savings-01≠	6,871	\$7,871	\$8,870	\$9,870
Chase Facility Fund 3-mo CD 11/24/24□	45,000	\$45,000	\$45,000	\$45,000
Vantage W. CU Facility Fund CD 1/25/25©	100,000	\$100,000	\$100,000	\$100,000
Vantage W. CU Facility Fund CD 11/5/24☆	50,000	\$50,000	\$50,000	\$50,000
VWCU Imprmnt/Opportunity Fund-00*	19,514	\$19,514	\$19,506	\$19,490
Facility Fund Invest Acct /Endowment □	24,715	\$24,715	\$23,960	\$23,960
<b>Total</b>	<b>\$312,964</b>	<b>\$312,484</b>	<b>\$315,141</b>	<b>\$319,898</b>

\* We received anonymous designated gifts, part of which is to be used for 'sustainable' marketing activities. We called this the Opportunity Fund. Out of this account we have funded the website upgrade & partially funded of

our Office improvement fund. We have also used this fund to test out other advertising opportunities and used it for buying video equipment that allows us to live-stream on Zoom and upload to YouTube. Includes a donation for the new minister's signing bonus. This fund was used for cost associated with the new minister search.

☆ The 7-mo CD matured Jan. 3, 2024. This was rolled over into a 10-mo CD maturing Nov. 5, 2024.

© The 15-mo CD matured March 19, 2024. This was rolled over into a 10-mo CD maturing Jan. 25, 2025.

≠ Beginning in January the mortgage payments will be paid from the VWCU Facility Fund. Funds were transferred from Chase Facility Fund to VWCU Facility Fund to cover mortgage payments.

€ \$616 erroneously deposited to this account transferred back to Gen Op.

□ \$45,000 of final land payment was reinvested for 3 months to get 4.25%. New maturity date is 11/24/24.

### Comparison between September 2023 and September 2024

Attendance/Sunday	INcreased by	0
Offerings/month	INcreased by	\$2,853
Offerings/person/Sunday	INcreased by	\$9.83
Total Income	INcreased by	\$3,116
Expenses	INcreased by	\$1,808 (minister's salary/mortgage)
Net Income	DEcreased by	\$1,308

### Status of the CSLT Facility Fund

Facility Fund Investment Acct Deposits: Initial Deposit \$50,000 (Nov12), Deposit \$10,236 (Mar13) Deposit \$15,188 (Dec13)  
 Investment Account closed December 2016 to purchase raw land at 4961 E. 22nd St. On June 3, 2019 we sold our raw land on 22nd St and have agreed to serve as 'bank' for the buyer for five years with annual payments, on June 3 of each year, final payment received June 11, 2024.

Date	CSLT Contributions	Various Projects & Interest	Personal Donations	\$ Total
Year End 2009				29,365
Year End 2010				48,710
Year End 2011				70,361
Year End 2012	6,800	1,045	1,430	79,636
Matching Fund Reserves			2,900	82,536
Year End 2013 (Inspection)	<1,800>	4,780	3,327	88,843
Year End 2014	<600>	1,789	25,884	115,936
Year End 2015 (Moved to River Rd)	<5,223>	<1,786>	7,109	116,027
Year End 2016 (Purchased land)	<102,024>	2,068	2,440	18,511
Year End 2017 (InvAcctClosed.)		164	1,500	20,175
Year End 2018		112	1,000	21,287
Year End 2019 (sold land & bought office)	(net) <17,146>⚡	1,434	200	5,775
Year End 2020		47,479 ☺ +3	25	53,288
Year End 2021		46,587 ☺ ☐		99,875
Year End 2022		36,501 ☺ ☆		136,379
Year End 2023 Interest and Endowment Payment on land Maintenance/Repairs		7,476 i, e, 47,719 ☺ <2,285>		191,246
January 2024		516 i, <1,001 π>		190,761
February 2024		1,517 e, 226 i, <1,001 π >		191,503
March 2024		329e, <4,987>i, <1,001 π >		185,844
April 2024		2 i, <1,001 π >		185,845
May 2024		2,487e, 1i, <1,001 π >		187,332
June 2024		\$46,939☺, 1i, <1,001 π >		233,271
July 2024		1i, <1,001 π >		232,271

August 2024		$1i, <1,001 \pi >$ $756 e_i$		232,027
September 2024		$1i, <1,001 \pi >$		231,027

Ⓕ Facility Fund expenses to relocate to our Education Center have been completed (for now). In total we spent \$59,330.32 for the down payment and the repairs required to meet the requirements of our mortgage holder. A detailed breakdown of expenditures was presented in the January 16<sup>th</sup> Board minutes. We paid \$1,440 of capital expenses from General Operations during the move.

Ⓖ The annual payment on the sale of the 22<sup>nd</sup> St property initiated in 2019.

Ⓖ We received our first quarterly report on our investment in the SOM Foundation Endowment, discussed in Cash Balances above.

☆ Reflects a \$9,091 decrease in value of our investment in the SOM Foundation Endowment, with a slight uptick in the 4<sup>th</sup> quarter. Discussed in Cash Balances above. Also includes money spent on office building maintenance.  $e_i$  Increases/Decreases in

endowment value

$i_i$  Interest

earned

$\pi$  911 Craycroft

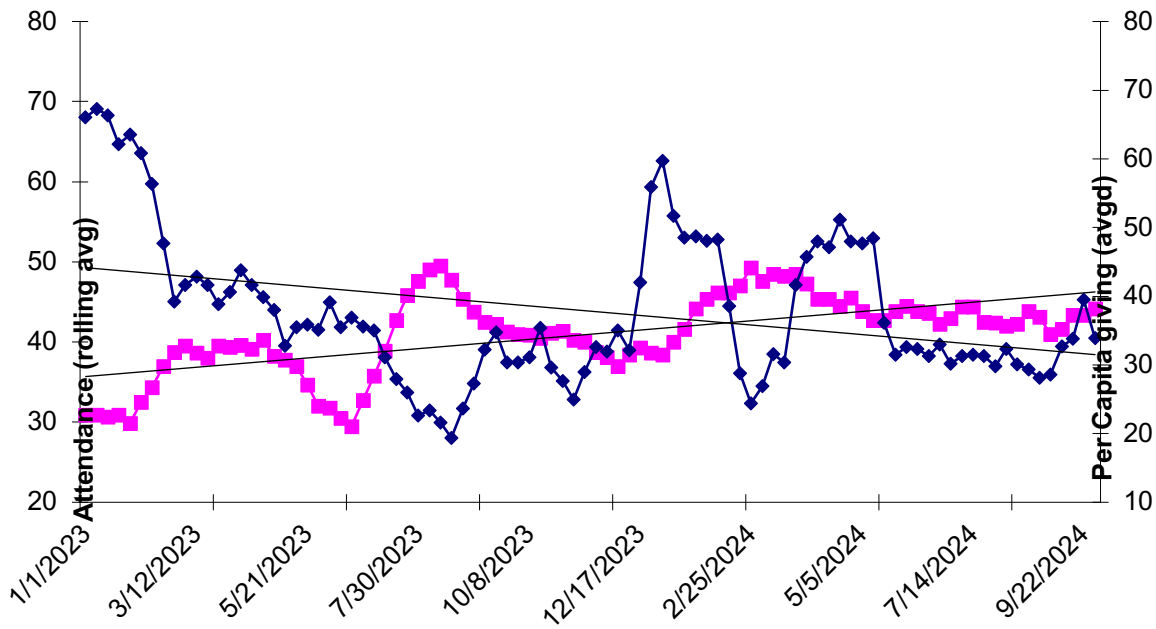
mortgage payment

Audit of the Facility Fund report was done in September 2023. **\$5,775 is the actual year-end total, \$1,434 adjustment needed to arrive at total.** Amount compared to Jan 2023 minutes. **\$36,501 is the correct figure and year-end total accurately matches bank accounts.**

Center for Spiritual Living Tucson								
Budget vs. Actuals: 2023-2024 Budget - FY24 P&L								
July - September, 2024								
	Jul 2024		Aug 2024		Sept 2024		Total	
	Actual	Budget	Actual	Budget	Actual	Budget	Actual	Budget
<b>Income</b>								
40000 Contributions							0	0
40101 Sunday Offerings	1,686	5,500	2,236	5,500	3,282	3,500	7,204	14,500
40110 Online Contri	3,881	3,000	2,416	3,000	5,286	3,500	11,583	9,500
<b>Total 40000 Contributions</b>	<b>5,567</b>	<b>8,500</b>	<b>4,652</b>	<b>8,500</b>	<b>8,568</b>	<b>7,000</b>	<b>18,787</b>	<b>24,000</b>
40520 In-Kind Donations			73				73	0
41000 Class/Workshop Income					128	366	128	366
48000 Bookstore Income	123	36	61	36	69	80	253	152
<b>Total Income</b>	<b>9,065</b>	<b>9,394</b>	<b>5,797</b>	<b>9,394</b>	<b>9,470</b>	<b>8,234</b>	<b>24,333</b>	<b>27,022</b>
	9,065	9,394	5,797	9,394	9,470	8,234	24,333	27,022
<b>Expenses</b>								
Total 00 ADMINISTRATION	4,345	4,218	2,259	4,112	3,089	4,474	9,693	12,804
Total 02 MINISTER COMPENSATION	3,050	3,250	3,050	3,250	3,050	3,050	9,150	9,550
Total 03 MUSIC EXPENSE	1,650	1,705	1,650	1,705	1,800	1,705	5,100	5,115
04 MINISTRY EXPENSE		5		5		5	0	15
Total 05 SUNDAY SERVICE EXP	1,008	550	490	550	613	973	2,110	2,073
Total 06 TITHING / CHARITABLE GIVING	557	1,388	465	1,388	857	700	1,879	3,476
07 LEADERSHIP DEVELOPMENT EXP		0	72	1,500			72	1,500
08 BOOKSTORE EXPENSE	68	68	29	0	100	68	196	136
09 CLASS/WKSH/PT/EVENT EXPENSE			178				178	0
<b>Total Expenses</b>	<b>10,677</b>	<b>11,184</b>	<b>8,193</b>	<b>12,510</b>	<b>9,509</b>	<b>10,975</b>	<b>28,379</b>	<b>34,669</b>
<b>Net Operating Income</b>	<b>-1,612</b>	<b>-1,790</b>	<b>-2,395</b>	<b>-3,116</b>	<b>-39</b>	<b>-2,741</b>	<b>-4,046</b>	<b>-7,647</b>
Total 81000 CLASS/WORKSHOP COST CENTER	-2,694	0	178	0	586	0	-1,931	0
<b>Total 86000 FACILITY FUND REVENUE</b>	<b>-1,001</b>	<b>-1,001</b>	<b>-1,001</b>	<b>1,001</b>	<b>-1,001</b>	<b>-1,001</b>	<b>-3,003</b>	<b>-1,001</b>
88000 Opportunity Fund		0		0		0	0	0
Total Other Income	-3,695	-1,001	-823	-1,001	-415	-1,001	-4,933	-3,003
<b>Net Other Income</b>	<b>-3,695</b>	<b>-1,001</b>	<b>-823</b>	<b>-1,001</b>	<b>-415</b>	<b>-1,001</b>	<b>-4,933</b>	<b>-3,003</b>
<b>Net Income</b>	<b>-5,307</b>	<b>-2,791</b>	<b>-3,218</b>	<b>-4,117</b>	<b>-454</b>	<b>-3,742</b>	<b>-8,979</b>	<b>-10,650</b>
<b>less designated</b>	<b>1,001</b>		<b>1,001</b>		<b>1,001</b>		<b>3,003</b>	
<b>true net</b>	<b>-4,306</b>		<b>-2,217</b>		<b>547</b>		<b>-5,976</b>	

Note: Above Budget vs. Actual expenses and net operating income differ from the same information listed on the income/expense chart above. The above Budget vs. Actual correctly reflects the mortgage payment being paid from the Facility Fund account.

## Attendance and Per-Person Giving Over Time



### Range Report for 2nd Quarter 2024 (with previous quarters for comparison)

For the 3rd quarter 2024, the “bright line” was \$605 and included 10 contributors out of 34 identified donors. For the 2nd quarter 2024, the bright line (20% of the contributors who donated 80% of the income) was \$300 and included 17 contributors.

For the 1st quarter 2024, the bright line (20% of the contributors who donated 80% of the income) was \$605 and included 11 contributors. (We discussed listing the leaders at last meeting and decided this wasn’t needed.) For the 4th quarter 2023, the bright line (20% of the contributors who donated 80% of the income) was \$600 and included 7 leaders out of 11 contributors.

For the 3rd quarter 2023, the bright line (20% of the contributors who donated 80% of the income) was \$685 and included 8 leaders out of 9 contributors.

### Notes from Annual Meeting regarding possible move to Camino Blanco

CSLT has been presented with a most intriguing possibility... of moving to a combined location offering many of the activities we don’t have now and would like to.

Currently Sunday Service is at Live Theater Workshop - which has been a most accommodating landlord for us since June 2022.

But as we grow, our requirements and our dreams mean we need a space that offers CSLT and our larger community options for ...

- Sanctuary space and office in one location
- A more central location..
- More people attending & participating
- Social and fellowship whenever we gather (Potlucks!)
- Special events and holiday observance on other than Sundays
- On-site storage with less set-up and take away for
  - Altared States
  - Our musicians
  - Greeters and the welcome area, bookstore, etc.

Continued...

Seating without stairs for easier access  
Better technology allowing us to share online easier & better

Now we have the possibility of achieving these and more.

Rev. Rhoni, our Practitioners, the Board and Michael Zimmerman as Music Director have been in conversation with Rev. Dr. Jonathan and the Board at Unity regarding CSLT using their Sanctuary on Sunday and having a separate office and storage space on the 18-acre campus located at River & Camino Blanco.

CSLT renting space there would include a one address home with  
Sanctuary for service at 11 a.m. Sunday morning  
Harmony hall for social and fellowship  
An office & space separate from the Unity building.  
Our musicians could plug-in and play  
Technology that truly supports our needs  
Seating for 175 on one level (no stairs and a center aisle)  
Potlucks and other socials in Harmony Hall next to the Sanctuary  
Special events not restricted to Sunday morning: Endings/Beginnings, etc.  
Classrooms with built-in technology  
The labyrinth  
A more central location  
Storage near that would facilitate Altered States set-ups much more easily  
Space nearby that would hold and display CSLT materials

There would be a new sign at the Camino Blanco entry with equal space for both communities.

Moving our Service to 11 a.m. is a large request of our community. Unity would be moving their Service earlier to 9:00 or 9:30 to provide that time for us. It will allow for a 30-minute break for shared fellowship and our Meditation.

To accomplish this major change we would need to sell the office space at 911 S Craycroft. Being released from our current mortgage and the monthly payment to LTW would essentially leave our monthly expenses unchanged but with a much larger center for our community.

Rev. Rhoni and the Board will have Q&A time available after Service at LTW on Sundays 10/20, 10/27 & 11/3. A special Zoom Room will be made available for those unable to attend at LTW. If you are unable to attend those sessions, please email your questions to Rev. Rhoni at [revrhonitretsven@gmail.com](mailto:revrhonitretsven@gmail.com) Be sure to include your best contact information.

We would have a true Sanctuary with space to grow and celebrate all the aspects of being a community. We have grown over the last few months, this location and all it offers could provide the full-on facilities and options we need to thrive.

This possibility was discussed at length during CSLT's Annual Meeting. It was received very positively by the members in attendance with one dissenting.

We look forward to enlarging this conversation to the entire community.

---

On 10/20/24 there will be a combined meeting of the CSLT leadership and Unity's Board. Rev. Jonathan received a large supporting response when he described the possibility at their Service on 10/13.

##