



**Board of Trustees Minutes for
October 26, 2023@ 4pm (zoom)**

1	Call to Order and Evocation	Pg 2	Maria	5 min
2	Visioning	Pg2	Chris	15 min
3	Check In		All	5 min
4	Last Month's Minutes		Done	0 min
5	Call to Audience		Maria	10 min
6a-g	Finance/Stewardship Report	Pgs 2, 9-12	Janet	10 min
	Current Financial reporting			
	CD account			
	Facility Fund			
	Budget			
	Conscious Giving and Offerings			
	Operating expenses			
	New Computer update			
	Insurance			
	Donor Calendars			
7a-c	Review Current Business Items	Pg 2-3	All	10 min
	911 S. Craycroft (office) update			
	LTW update			
	CSL Annual Report			
8a-j	New Business	Pgs 3	All	15 min
	Requirement for New Member Class			
	Agenda order			
	New Minister Nominating Committee			
	Membership notification for voting for new minister			
	Review Membership list			
	Charitable Giving			
	Classes			
	Next Board meeting			
	Mid-month meeting notes			
	New Agenda Items for next month			
9	Sunday Gratuities	Pg 3	All	10 min
10	Responsible Board Member Schedule	Pg 3-4	All	10 min
11	Newsletter Articles	Pg 4	All	2 min
12	Calendar review	Pg 4-5	All	10 min
13 a-l	UpDates	Pg 6-7	All	10 min
	Education			
	Youth			
	Board Liaisons			
	Community & Growth			
	CSLT Online Community Presence			
	Small Groups			
	Advertise			
	Directory			

CSL Member Council Meeting
 Spiritual Living Circle
 Leadership Training
 Outreach

14a-b	The 2023-2024 Planning Cycle Planning Meeting Needed? Guest Speakers Tabled Items	Pg 7	All	2 min
15	Team Reports Adjourn and Pray out	Pgs 7-9	All	2 min

Present: Mariann Moery, Janet Salese, Chris Wheeler, Linda Bullock, Madeline Pallanes, Maria Schuchardt
 Absent: none
 In Service: Sharon Whealy, RScP
 Guests:

**Center for Spiritual Living Tucson
 Minutes for October 26, 2023@ 4pm (zoom)**

1 Call to Order/Evocation

Maria

2 Visioning

Chris

Q: What is the Highest Vision or Highest Ideal for Center for Spiritual Living Tucson?

Q: What must be released, embraced or become for us to live this highest vision?

Q: Is there anything else that wants to be known, understood, or realized? What else?

3 Checking In (briefly, please)	All
4 Last Month's Minutes	Done
5 Call to Audience	Maria
6 Financial/Stewardship Report	Janet
6a Current Financial Reporting	Additional reports pages 10-13
6b CD Accounts maturity dates: 1 Started December 19, 2022 matures March 19, 2024 Vantage West Credit Union. 2 Started July 2023 matures on January 3, 2024 , Vantage West Credit Union.	
6c Facility Fund is up to date.	
6d Budget The new budget went into effect Sept. 1.	
6e Attendance and Per-Person Giving Over Time The graph is not accurately showing attendance. We have been averaging 40+ in person and online.	
6f Operating expenses This month's deficit is \$1,346. The monthly deficit is decreasing, which has been due to cost cutting (Thank you Janet), decreased expenses, and increased donations. Manifesting abundance.	
6g New Computer New Monitor YAY!!!	
6h Insurance Need to find new insurance for building, and LTW, board members by February 2024. Maria to contact Rev Julie for contact about CSL insurance information.	
6i Donor Calendars how many? 11 donors and 9 calendar artists and pre-orders and 5 extras.	
7 Current Business Items	All
7a 911 S Craycroft facility update	

7b Live Theater Workshop (LTW) / Sunday Service Zoom It is important for LTW to sign in as host (CSLT admin) and have Susan and Zoom recorder are cohosts. Mariann and Maria are sharing responsibility of recording talk and posting to YouTube. Announcements from podium. Hosts need to know that all announcements need to be CSLT events. People can put fliers in foyer. Linda will ask Marya to let hosts know.
7c CSL Annual Report Maria is working on it. Hopefully will be done by Monday, Oct. 30. There are two delegates, Sharon Whealy, RScP, and Linda Bullock.
8 New Business
8a Requirement for New Member Class: If person has taken Foundations they only have to take the second class. It will be on Zoom.
8b Agenda/minutes a new order of items was used this meeting. It worked to have current issues dealt with early in the meeting.
8c New Minister Nominating Committee Update An initial 15-minute interview focused on values has been done with candidate. The next interview will be an in-depth with the Nominating Committee. The following interview will include board. If possible, the two meetings will be combined, if Rev. Julie Lobato agrees. As of October 26, 2023 one person has applied for minister position.
8d Member notification for voting for new minister The notification and voting date to be determined by using the bylaws.
8e Review Membership list CSLT has 33 members. Members who have left CSLT are welcome back according to bylaws. Will have more after Sharon's Membership meeting in November Janet will type up and file.
8f Charitable Giving next year we will not donate 5% of our income to a Tucson charity. CSLT will continue to tithe 10% to CSL home office.
8g Classes: Details 13a
8h Next Board Meetings Thursday, November 30, at 4:00pm on Zoom. November 12 mini meeting at 1:00 on Zoom.
8i Mid-month Meeting Notes October 8, 2023 1. Reviewed Responsible Board Member list and updated. 2. CSLT electric sign by office has been repaired and will be paid by Board meeting on October 26.
8j New items to add for next meeting There is an external hard drive for backup of computer files, let's use it.

9 Sunday Gratitudes

Date	Honoree
10/29	Rev. Nita Strauss, Dia de los Muertos, a day of remembering
11/05	Pat Masters, birthdays, anniversaries
11/12	Rev Joy Lovejoy, Veterans
11/19	Alexandra Musser, RScP, Bountiful harvest, Gobble gobble day
11/26	Sharon Whealy, RScP, Lunch Bunch Participants
12/3	Rachel Satori, RScP, birthdays, anniversaries

10 Responsible Board Member @LTW Schedule (pick up bulletins and donation bag from office, set up at the LTW (instructions are in the blue money bag), take money bag to office and put in the safe, update bulletin.)

Date	Zoom Recorder	Board Member in charge	Meditation	Host	SMT/intro speaker
10/29	Maria	Chris/Mariann/Janet	Robie-Jean	Marya	Robie-Jean

11/5	Mariann	Maria	Maria	Marya	Maria
11/12	Mariann	Maddy	Sharon	Jeff	Sharon
11/19	Maria	Linda	Tamara	Linda	Sharon
11/26	Linda	Maddy	Maria (Sharon is Speaker)	Pat	Maria
12/3	Mariann	Maria	Maria	Marya	Maria

11 Newsletter Articles: Due Who is writing

10/22 Linda
 10/29 Sharon
 11/5 Mariann
 11/12 Chris
 11/19 Maria
 11/26 Madeline
 12/3 Janet
 12/10 Linda

Rotation starting April 16: Sharon → Mariann → Chris → Maria → Madeline → Janet → Linda

12 Calendar Review

October						
1 Sharon Whealy, RScP Annual meeting @ noon	2 Maria Deposit and Sunday programs, attendance Janet	3 Janet	4 Janet	5 Vision Core (z) 6:30pm	6	7
8 Alexandra Musser RScP LGBTQ Coffee 10:45 Mid month meeting at 1:00	9 Janet ~10-4	10	11	12	13	14
15 Rev Donna Smith Prosperity Alums 1pm Movie 2p	16 Janet ~10-4	17	18	19	20	21
22 Cerise Patron Lunch Bunch	23 Janet ~10-4 Maria deposit	24 Gratitude Rainshower 6:30-7pm	25	26 Board Mtg (z), 4pm	27	28 Full Moon Labyrinth Walk Janet 7:00pm
29 Rev Nita Strauss	30 Janet ~10-4	31				

November						
			1	2 Vision Core (z) 6:30pm	3	4
5 Pat Masters Prosperity Alums 1pm	6 Janet ~10-4	7	8 New Membership 5:30-7pm Z	9	10	11
12 Rev Joy Lovejoy LGBTQ Coffee 10:45 Mid month meeting @ 1	13 Janet ~10-4	14	15 New Membership 5:30-7pm Z	16 Creatives 12:30 -2:30	17	18 Office Clean up Party
19 Alexandra Musser RScP Alums 1pm Movie 2p Mariann Chris	20 Janet ~10-4 Mariann	21 Mariann	22 Mariann	23 Thanksgiving Mariann	24 Mariann	25 Mariann
26 Sharon Whealy, RScP Lunch Bunch Mariann	27 Janet ~10-4 Full Moon Labyrinth Walk Janet 7:00pm	28 Gratitude Rainshower 6:30-7pm	29	30 Board Mtg (z), 4pm		

December						
					1	2
3 Prosperity Alums 1pm	4 Janet ~10-4	5	6	7 Vision Core (z) 6:30pm	8	9
10 LGBTQ Coffee 10:45	11 Janet ~10-4	12	13 Janet	14 Janet	15 Janet	16 Janet
17 Prosperity Alums 1pm Movie 2p Janet	18 Maria ~10-1 Janet	19	20	21 Board Mtg (z), 4pm	22	23
24 No Lunch Bunch	25 Janet ~10-4	26 Gratitude Rainshower 6:30-7pm Full Moon Labyrinth Walk Janet 7:00pm	27	28	29	30
31 Beginning/ endings Service						

<p>13a Education Unless otherwise agreed to, it was agreed to that new class facilitator split be 75/25. Any cash donations collected by the facilitator should be sent to the office with a note on who gave what amount if known. Sharon suggested we look at how people sign up and pay for classes. Sharon will be holding membership classes on Wednesday, November 8th and 15th from 5:30-7pm on Zoom. Thank you, Sharon for facilitating, supporting and expanding a diverse selection of classes.</p>		
13b Youth	On Hold	Maria
13c Board Liaisons	On hold	Maria
13d Community & Growth	No change at this point	Maria
Credo: CSLT inspires spiritual expression in community with all and offers an accepting, loving, and peaceful way of living a joyful, healthier, and more abundant life.	Have you checked with your team members or leaders to see how they are doing? Would any of your teams appreciate more volunteers?	Maria
<p>CSLT Online Community Presence: <u>Zoom account:</u> There is one CSLT Zoom account. There is an average of 11 participants. <u>YouTube:</u> There are 216 subscribers (up 6 subscribers from last month. There are an average of 50 views for each service. <u>Facebook:</u> CSLT has 1K! followers and 958 likes (up 7 from last month). The Facebook page is being updated by Madeline and Mariann Thank you Maddy and Mariann! <u>Instagram:</u></p>		
<p>Newsletter Statistics: Four newsletters were sent during September to between 528-530 subscribers. Between 242-264 people (47-51%) opened them, and 11-19% of those who opened also clicked on something for further reading</p>		
<p>Morning Meditation. Daily practice continues. The current leaders have agreed to continue the daily morning practice through end of 2023. We know that those participating get good value from the practice, and we/they are open to having others join in as they feel intrigued and called. There is an average of 5.81 attendees per day. 😊</p>		
<p>13e Small Groups</p>		
<p>Prosperity Mastermind Group the group continues to meet.</p>		
<p>Men's Group, which was begun in 2014(!) meets twice monthly in person, with some participants joining the conversation from a shared zoom room. This is a closed group.</p>		
<p>Janet Salese hosts Full Moon Labyrinth Walk as a regular activity for which we advertise and encourage participation of those interested. Sept 29, 4 and October 23, 4 people walked the labyrinth. The 2023 schedule: Jan 6, 7pm; Feb 5, 7pm; Mar 7, 7pm; Apr 5, 7pm; May 5, 8pm; June 3, 8pm; Jul 3, 8pm; Aug 1, 8pm; Aug 30, 8pm; Sept 29, 7pm; Oct 28, 7pm; Nov 27, 7pm; Dec 26, 7pm. The 2024 Schedule: Jan 25, 7pm; Feb 24, 7pm; Mar 25, 7pm; Apr 23, 7pm; May 23, 8pm; June 21, 8pm; Jul 21, 8pm; Aug 19, 8pm; Sept 17, 7pm; Oct 17, 7pm; Nov 15, 7pm; Dec 15 7pm.</p>		
<p>Sacred Cinema Meets on the third Sunday of the month at 2 pm on Zoom. On October 15 movie was <i>What the Bleep!?: Down the Rabbit Hole</i>. November 19: <i>Rashomon</i>, Dec 17: <i>It's A Wonderful Life and A Boy Named Christmas</i></p>		
<p>Lunch Bunch Madeline hosts a regular gathering at Basha's food court (Swan and Ft Lowell) the 4th Sunday of each month. On October 22 there were 6 participants. The next lunch bunch is November 26. Thank you, Madeline.</p>		
<p>LGBTQ Coffee Meets 2nd Sunday. There are 4 – 6 participants. Started August 2023.</p>		
<p>CSLT Creatives November 16, Janet host at office.</p>		
<p>13f Other Places We Might Advertise? – Madeline</p>		

Mariann updated Natural Awakenings each month. The deadline for uploading events and activities is the 10 th of the previous month. (example: April 2023 events were uploaded by March 10).
13g Directory – Janet. The next directory update will be in October.
13h CSL Member Council Meeting
13i Spiritual Living Circles Linda has been attending.
13j Leadership Training Opportunities for Board Members – On hold.
13k Outreach/In-person marketing? Maria went to the Gay Chamber of Commerce breakfast on August 17. There are 4 levels of membership. What would be appropriate would be one of the first two memberships either for \$175, or \$300 for a year. For the \$300 membership the added benefits are: Your logo listed as a Sponsor on the Chamber website, 1 Spotlight posting on the Chamber's 411 Facebook page, Sponsor a breakfast at a reduced price, Verbal recognition of your sponsorship at every monthly breakfast meeting. Maria will continue to attend monthly breakfasts. Interfaith council It was suggested that someone belong to the Interfaith council. Sharon has volunteered to look into going. Being proactive in expanding our congregation will help will increase the momentum for growth as we are calling in our new minister.
14 2023-2024 Planning Cycle
14a Planning Mtg? (none needed at this time)
14b Guest Speakers Sharon has taken on the task of getting presenters. Thank you, Sharon. October speakers are: 10/1 Sharon Whealy, RScP, 10/8 Alexandra Musser, RScP, 10/15 Rev. Donna Smith, 10/22 Cerise Patron, 10/29 Rev. Nita Strauss. November Speakers: 11/5 Pat Masters, 11/12 Rev Joy Lovejoy, 11/19 Alexandra Musser, RScP, 11/26 Sharon Whealy, RScP. Guest speakers will use the global themes, as prepared by csl.org. Thank you, Susan, for hosting Zoom.

Tabled Items	Next steps for Consolidated Community Campus: Further discussion of this item is tabled until Center and community growth clarifies our needs.
	Small group Requirements - Further discussion of this topic tabled for now.
	Paid Administrative support in the office, deferred until new minister arrives.
	Idea parked until after we return to meeting in person: Creation (or Reviving) of a CSLT Business Directory for those who wish to advertise their services to each other.
	Deferred Coffee News advertising

15 Team Reports

Pages 7 - 9

Adjourn and Pray Out

CSLT Board Minutes for October 26, 2023@ 4pm (zoom)

Team Reports

ADMINISTRATION

Submitted by Maria Schuchardt

We've simplified everything that can be simplified, and it seems to be working alright. Maria is making the Sunday bulletins. Janet has taken on many duties. Thank you, Janet!!

ALTARED STATES

Submitted by Maria Schuchardt

Mariann Moery has become liaison for Altared States. Team members provide beautiful arrangement for Sunday services. If you wish to provide flowers in honor of a special event or a loved one, contact Barbara Arissa or another member of this team.

CSL Spiritual Living Circles

Submitted by Linda Bullock

Linda has been attending these meetings where SOM monthly guide articles are discussed.

CSL Member Council Meeting

Submitted by Linda Bullock

ECCLESIASTICAL CORE

Submitted by Maria Schuchardt

Sharon Whealy, RScP has taken on the responsibility of scheduling speakers. Thank you, Sharon. The upcoming speakers are listed in Section 10. Sharon has made a spreadsheet that is on Google Docs. The Google document is updated and most accurate. Sharon also continues to support our Center with Sunday morning meditations and platform twice each month. She also hosts a monthly gratitude rainshower. Maria Schuchardt offers the Sunday Morning Meditation and platform on the 1st Sunday each month, and then platform duties 3rd Sunday. Tamara Morrison continues to provide the pre-service meditation on 3rd Sundays. Robie-Jean Chandler, a former CSLT RScP provides practitioner duties on the 5th Sunday. The new minister will determine her future practitioner status. Daily morning meditation practice (on zoom) continues. Madeline has assumed oversight of this group. Thank you, Madeline. Committed volunteers, and committed attendees continue to support it. New people join intermittently and are welcomed.

EDUCATION CORE

Submitted by Maria Schuchardt

On November 8th and 15th Sharon Whealy, RScP will lead New Membership class.

HOSTS

Submitted by Maria Schuchardt

Marya Wheeler is team leader, with Jeff Jackson, Pat Masters, Linda Bullock. Marya is looking for another host.

MINISTER'S TRAVEL PLANS

MUSIC/SOUND

Submitted by Chris Wheeler

We are so grateful for our music team. Thank you to the band for meeting in person while we were online. The music sounded great. Michael Zimmerman covers for David Prouty when he needs to be elsewhere on a Sunday. Much appreciated! Opening song for September was *All That I Need*. In October the song is *I Release* by Rickie Byars-Beckwith. The November song is *God in Everything* by Jack Fowler. Stephen Frankenfield and Tina Evens are our techs when we are at LTW.

New Minister Search Committee

An initial 15-minute interview focused on values has been done with candidate. The next interview will be an in-depth with the Nominating Committee. The following interview will include board. If possible, the two meetings will be combined, if Rev. Julie Lobato agrees. As of October 26, 2023 one person has applied for minister position.

Vision Core Notes

Submitted by Chris Wheeler

3 people participated.

What is the Highest Vision or Highest Ideal for Center for Spiritual Living Tucson?

Holiday Village w Santa and elves, Outdoor gathering, production approach, Big story on the desert

What must be released, embraced or become for us to live this highest vision? Close up of sunflower w big, fluffy, clouds in the sky floating by - many hands holding the sunflowers, We get a messenger, Love becomes, fantastic and free

Is there anything else that wants to be known, understood, or realized? What else? Black licorice in cellophane pack, lots of participants eating it, Geolocator, beacon, central hub, communicator

Finance/Stewardship Report

Treasurer, Janet

Executive Summary: September was a 4 Sunday month. Our attendance is increasing now that we are back in person and have Zoom working better. On average in September, we had 33 in-person and 11 on Zoom. The Board continues to vision for a growing Center.

The Board has agreed to sustain and hold the vision of increased attendance by individuals willing and able to participate (in all ways and on many levels), which allows us opportunities to expand our reach in Tucson.

	Total Sunday Offerings and P+	New Designated Monies*	Total Income	Total Expenses	Net Income	\$ per Weekly Attendee	Average Weekly Attendance
Sept.	\$5,715	\$728 α	\$6,355 €	\$7,701	<\$1,346>	\$32.92	43+
August	\$3,700	0	\$4,326	\$8,159	<\$3,833>	\$27.62	39+
July	\$5,489	\$4,698 β	\$5,877	\$8,603	<\$2,726>	\$20.69	52+ π
June	\$6,969	\$47,719	\$7,425	\$7,049	\$376	\$41.28	40+

*Presently we have a stand-alone Facility Fund, Scholarship Fund, a Practitioner Fund, an Opportunity Fund and a Compassionate Heart fund. All are designated and are kept separated from Total Income or Total Expenses.

Monies were used from the Opportunity Fund to pay for the Co-Creation weekend with Dr. Kathy Hearn and laptop used to broadcast Sunday service. β Reflects an increase in investments and a donation for the new minister’s signing bonus. α Increase in investment less sign repair. € Includes class closeout. π Attendance for this month was overstated as band members were being counted twice.

Cash Balances	September	August	July	June
Chase General Ops Checking	\$16,143	\$16,174	\$16,418	\$15,588
Vantage W. Gen Ops Checking§	\$21,697	\$24,684	\$43,976	\$44,574
Vantage W. Additional Savings	\$23,113	\$23,111	\$10,018	\$10,017
Vantage W. Education Savings	\$1,812	\$1,812	\$1,812	\$1,812
VWCU Practitioners’ Savings	\$412	\$412	\$412	\$412
SubTotal	\$63,177	\$66,193	\$70,824	\$72,403
Chase Facility Fund Savings	\$14,929	\$14,929	\$14,929	\$14,928
Vantage W. Facility Fund Savings	\$4,379	\$4,379	\$4,378	\$4,378
Vantage West CU Facility Fund 15-mo CD	\$103,173	\$102,809	\$102,447	\$102,067
Vantage West CU Facility Fund 7-mo CD☆	\$50,000	\$50,000	\$50,000	\$50,000
VWCU Imprmnt/Opportunity Fund*	\$27,494	\$27,482	\$24,456	\$24,441
Facility Fund Invest Acct /Endowment □	\$21,219	\$21,219	\$21,219	\$19,521
Total	\$284,371	\$287,011	\$288,253	\$287,738

* We received anonymous designated gifts, part of which is to be used for 'sustainable' marketing activities. We called this the Opportunity Fund. Out of this account we have funded the website upgrade & partially funded of our Office improvement fund. We have also used this fund to test out other advertising opportunities and will use it for buying video equipment that will allow us to live-stream when we return to in person services. (Bought video-equipment in August-September.) Also includes a donation for the new minister’s signing bonus.

□ The 2nd quarter report on our investment in the SOM Foundation Endowment shows yet another slight increase as shown in July.

☆ We received another payment of the sale of our 22nd property. \$50K was used to purchase a new CD.

§ In June, monies not truly designated as Education Funds were transferred to VWCU Gen Ops. This same amount was then transferred to the VWCU Additional Savings in August.

Comparison between September 2022 and September 2023

Attendance/Sunday	INcreased by	13
Offerings/month	INcreased by	\$ 92
Offerings/person/Sunday	DEcreased by	\$ 14.73
Total Income	INcreased by	\$ 493
Expenses	DEcreased by	\$ 1,450
Net Income	INcreased by	\$ 1,943

June 18 resumed hybrid Sundays with in-person attendance as well as zoom attendees, and YouTube participants. August 20 we dropped streaming to YouTube live to create a better Zoom experience.

Status of the CSLT Facility Fund

Facility Fund Investment Acct Deposits: Initial Deposit \$50,000 (Nov12), Deposit \$10,236 (Mar13) Deposit \$15,188 (Dec13)
 Investment Account closed December 2016 to purchase raw land at 4961 E. 22nd St. On June 3, 2019 we sold our raw land on 22nd St, and have agreed to serve as 'bank' for the buyer for five years with annual payments, on June 3 of each year.

Date	CSLT Contributions	Various Projects & Interest	Personal Donations	\$ Total
Year End 2009				29,365
Year End 2010				48,710
Year End 2011				70,361
Year End 2012	6,800	1,045	1,430	79,636
Matching Fund Reserves			2,900	82,536
Year End 2013 (Inspection)	<1,800>	4,780	3,327	88,843
Year End 2014	<600>	1,789	25,884	115,936
Year End 2015 (Moved to River Rd)	<5,223>	<1,786>	7,109	116,027
Year End 2016 (Purchased land)	<102,024>	2,068	2,440	18,511
Year End 2017 (InvAcctClosed.)		164	1,500	20,175
Year End 2018		112	1,000	21,287
Year End 2019 (sold land & bought office)	(net) <17,146> [†]	1,434	200	5,775
Year End 2020		47,479 ☺ +3	25	53,288
Year End 2021		46,587 ☺ ☐		99,875
Year End 2022		36,501 ☺ ☆		136,379
January 2023		354 i _v		136,733
February 2023		355 i _v		137,088
March 2023		3,024 i _v e _v		140,112
April 2023		2,729 i _v e _v		142,841
May 2023 <HVAC maintenance/repair>		<345> +349 i _v		142,845
June 2023		\$47,719 ☺ 330 i _v		190,894
July 2023		2,079 i _v e _v		192,973
August 2023		363 i _v		193,336
September 2023 <sign repair>		<970>, 364 i _v , 1698 e _v		194,064

[†] Facility Fund expenses to relocate to our Education Center have been completed (for now). In total we spent \$59,330.32 for the down payment and the repairs required to meet the requirements of our mortgage holder. A detailed breakdown of expenditures was presented in the January 16th Board minutes. We paid \$1,440 of capital expenses from General Operations during the move.

☺ The annual payment on the sale of the 22nd St property initiated in 2019.

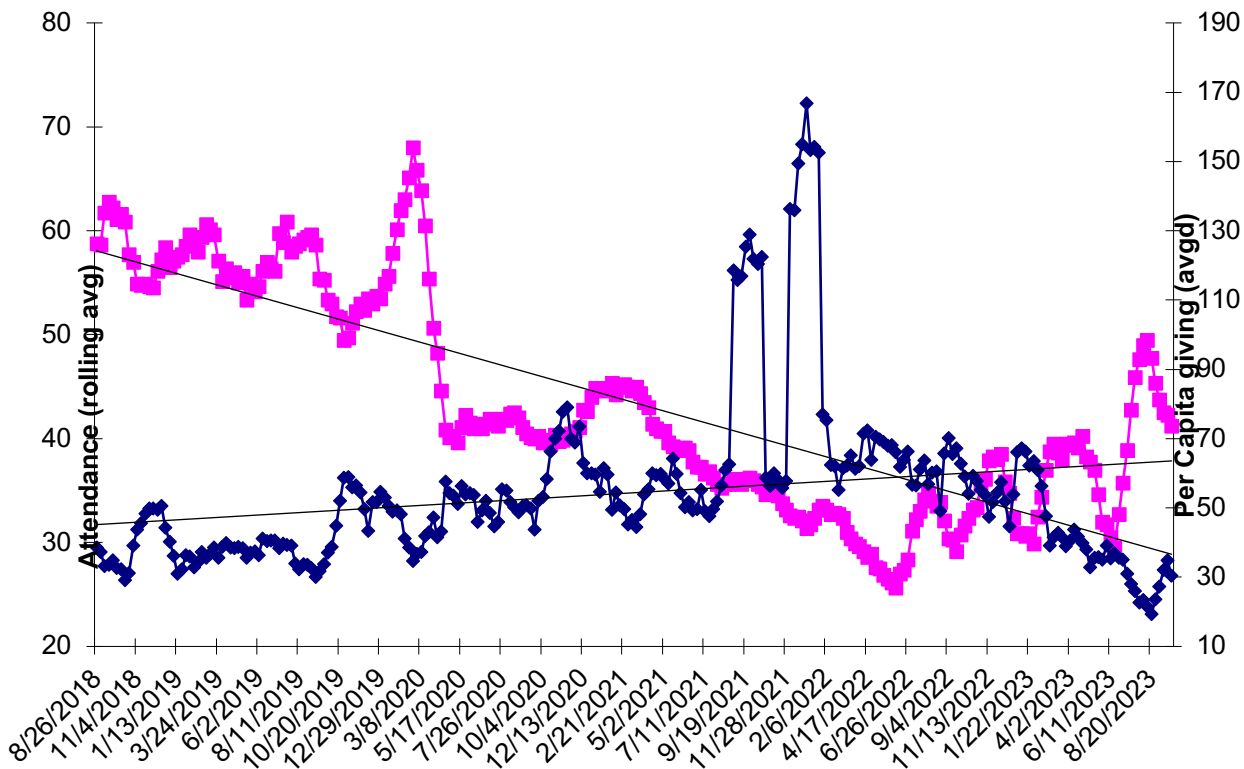
☐ We received our first quarterly report on our investment in the SOM Foundation Endowment, discussed in Cash Balances above.

☆Reflects a \$9,091 decrease in value of our investment in the SOM Foundation Endowment, with a slight uptick in the 4th quarter. Discussed in Cash Balances above. Also includes money spent on office building maintenance. e, Included increases in endowment value of \$2,700 reported in March, \$2,371 in April and \$1,698 in July. i, Interest earned on \$100K CD which will be transferred to the Gen Op account at maturity.

Audit of the Facility Fund report was done in September 2023. \$5,775 is the actual year-end total, \$1,434 adjustment needed to arrive at total. Amount compared to Jan 2023 minutes. \$36,501 is the correct figure and year-end total accurately matches bank accounts.

Center for Spiritual Living Tucson								
Budget vs. Actuals: 2023 Budget - FY23 P&L								
July - September, 2023								
	Jul 2023		Aug 2023		Sep 2023		Total	
	Actual	Budget	Actual	Budget	Actual	Budget	Actual	Budget
Income								
40000 Contributions							0.00	0.00
40101 Sunday Offerings	3,104.00	9,500.00	2,397.00	8,000.00	2,417.00	3,000.00	7,918.00	20,500.00
40110 Online Contri	2,385.00	2,000.00	1,303.00	2,000.00	3,297.50	3,000.00	6,985.50	7,000.00
Total 40000 Contributions	\$ 5,489.00	\$11,500.00	\$ 3,700.00	\$ 10,000.00	\$ 5,714.50	\$ 6,000.00	\$ 14,903.50	\$ 27,500.00
Total Income	\$ 5,877.00	\$11,500.00	\$ 4,275.69	\$ 10,000.00	\$ 6,355.38	\$ 6,355.00	\$ 16,508.07	\$ 27,855.00
Expenses								
Total 00 ADMINISTRATION	\$ 4,381.21	\$ 5,196.00	\$ 4,905.98	\$ 5,096.00	\$ 3,904.70	\$ 3,822.00	\$ 13,191.89	\$ 14,114.00
Total 02 MINISTER COMPENSATION	\$ 0.00	\$ 2,070.00	\$ 0.00	\$ 2,070.00	\$ 0.00	\$ 0.00	\$ 0.00	\$ 4,140.00
Total 03 MUSIC EXPENSE	\$ 1,750.00	\$ 1,935.00	\$ 1,600.00	\$ 1,985.00	\$ 1,550.00	\$ 1,705.00	\$ 4,900.00	\$ 5,625.00
Total 04 MINISTRY EXPENSE	\$ 0.00	\$ 20.00	\$ 0.00	\$ 20.00	\$ 0.00	\$ 5.00	\$ 0.00	\$ 45.00
Total 05 SUNDAY SERVICE EXP	\$ 1,612.50	\$ 860.00	\$ 1,090.00	\$ 880.00	\$ 1,322.14	\$ 1,310.00	\$ 4,024.64	\$ 3,050.00
Total 06 TITHING / CHARITABLE GIVING	\$ 823.35	\$ 1,725.00	\$ 527.55	\$ 1,500.00	\$ 857.18	\$ 998.00	\$ 2,208.08	\$ 4,223.00
Total 07 LEADERSHIP DEVELOPMENT EXP	\$ 0.00	\$ 0.00	\$ 0.00	\$ 500.00	\$ 0.00	\$ 0.00	\$ 0.00	\$ 500.00
08 BOOKSTORE EXPENSE	36.00	36.00	36.00	36.00	67.50	36.00	139.50	108.00
Total Expenses	\$ 8,603.06	\$11,842.00	\$ 8,159.53	\$ 12,087.00	\$ 7,701.52	\$ 7,876.00	\$ 24,464.11	\$ 31,805.00
Net Operating Income	-\$ 2,726.06	-\$ 342.00	-\$ 3,883.84	-\$ 2,087.00	-\$ 1,346.14	-\$ 1,521.00	-\$ 7,956.04	-\$ 3,950.00
Other Income								
Total 81000 CLASS/WORKSHOP COST CENTER	\$ 180.00	\$ 355.00	\$ 60.00	\$ 355.00	-\$ 335.00	\$ 355.00	-\$ 95.00	\$ 1,065.00
Total 86000 FACILITY FUND REVENUE	\$ 0.00	\$ 0.00	\$ 0.00	\$ 0.00	-\$ 970.18	\$ 0.00	-\$ 970.18	\$ 0.00
Total 87000 Investments	\$ 0.00	\$ 0.00	\$ 0.00	\$ 0.00	\$ 1,698.48	\$ 0.00	\$ 1,698.48	\$ 0.00
88000 Opportunity Fund	3,000.00						3,000.00	0.00
Total Other Income	\$ 3,180.00	\$ 355.00	\$ 60.00	\$ 355.00	\$ 393.30	\$ 355.00	\$ 3,633.30	\$ 1,065.00
Net Income	\$ 453.94	\$ 13.00	-\$ 3,823.84	-\$ 1,732.00	-\$ 952.84	-\$ 1,166.00	-\$ 4,322.74	-\$ 2,885.00
less designated	-3,000		0		-726		-\$ 3,726.00	
true net	-2,546		-3,824		-1,679		-\$ 8,049.00	

Attendance and Per-Person Giving Over Time



Range Report for 3rd Quarter 2023 (with previous quarters for comparison)

Donations/ Quarter	3Q2023		2Q2023		1Q2023		4Q2022		3Q2022	
	All	Extnd Ldrs	All	Extnd Ldrs	All	Extnd Ldrs	All	Extnd Ldrs	All	Extnd Ldrs
>\$2,000	2	2	1	1	2	2	2	1	2	2
\$1,500-1,999	1	0	1	1	2	1	4	3	4	3
\$1,000-1,499	2	2	3	2	3	3	4	2	0	0
\$750-999	1	1	2	1	1	1	1	1	3	2
\$500-749	3	3	5	2	3	2	7	3	6	3
\$250-499	5	1	5	3	3	0	6	0	4	1
\$100-249	7	1	6	0	9	1	12	2	10	0
\$1-99	6	0	10	1	3	0	10	0	5	1
0 or UnID'd	?	0	?	0	?	0	?	0	?	1
Total Number	27	10	33	11	26	10	46	12	34	13

For the 3rd quarter 2023, the bright line (20% of the contributors who donated 80% of the income) was \$685 and included 8 leaders out of 9 contributors.

For the 2nd quarter 2023, the bright line (20% of the contributors who donated 80% of the income) was \$600 and included 8 leaders out of 11 contributors. Our 1st quarter when we began to meet in person again.

For the 1st quarter 2023, the bright line (20% of the contributors who donated 80% of the income) was \$600 and included 9 leaders out of 11 contributors.

For the 4th quarter 2022, the bright line (20% of the contributors who donated 80% of the income) was \$535 and included 10 leaders out of 16 contributors.

For the 3rd quarter 2022, the bright line (20% of the contributors who donated 80% of the income) was \$600 and included 9 leaders out of 13 contributors.