



Board of Trustees
minutes for
May 18, 2023 @ 4pm (zoom)

| | | | | |
|-------|--------------------------------------------|--------------|--------|--------|
| 1 | Call to Order and Evocation | Pg 2 | Maria | 5 min |
| 2 | Visioning | | Chris | 15 min |
| 3 | Checking In | | All | 5 min |
| 4 | Last Month's Minutes | | Done | 0 min |
| 5 | Call to Audience | | Maria | 1 min |
| 6 | Finance/Stewardship Report | Pgs 2, 11-17 | Janet | 10 min |
| | New Minister Salary | | | |
| | Director to ACC | | | |
| | Budget | | | |
| | Tracfone | | | |
| 7 | Review Current Business Items | Pg 2-3 | All | 10 min |
| | 911 S. Craycroft (office) update | | | |
| | LTW in-person meeting update/thoughts | | | |
| | Revised minutes | | | |
| 8a-m | Review Current Activities | Pgs 3-5 | All | 15 min |
| 9 | The 2022-2023 Planning Cycle | Pg 5 | | |
| | Planning Meeting Needed? | | All | 2 min |
| | Next Board meeting | | All | 2 min |
| | Guest Speakers | | | 5 min |
| 10a-d | New Business for This Meeting? | Pg 5 | All | 15 min |
| | New Minister Nominating Committee | | | |
| | Review Membership list | | | |
| | Classes | | | |
| | Advertise events update | | | |
| 11 | New Business for Next/Future Meeting? | Pg 5-6 | All | 2 min |
| 12 | Sunday Gratitudes | Pg 6 | All | 5 min |
| 13 | Review 'Responsible Board Member' Schedule | Pg 6 | All | 2 min |
| 14 | Lead Newsletter Articles | Pg 7 | All | 1 min |
| 15 | Calendar Look Ahead | Pgs 7-9 | All | 5 min |
| 16 | Team Reports | Pgs 9-11 | All | 2 min |
| | Adjourn and Pray out | | Sharon | |

Present: Linda Bullock, Madeline Pallanes, Mariann Moery, Janet Salese, Maria Schuchardt, Sharon Whealy

Absent: Chris Wheelier

In Service: Maria Schuchardt (Running the meeting, Scribe)

Guests: none

**Center for Spiritual Living Tucson
minutes May 18, 2023 Meeting**

1 Call to Order/Evocation

Maria

2 Visioning

Maria

Q: What is the Highest Vision or Highest Ideal for Center for Spiritual Living Tucson?

Large lotus flower opening over the Tucson Aria, Grapes; wooden sign on wooden post, Big rainbows. Feeling of peace, birds singing, love flowing, joy abounds, clouds, music, flop-eared puppy, a snake raised up tasting the air; sunrise on an ocean beach.

Q: What must be released, embraced or become for us to live this highest vision?

What is and what could be = new & change, receive grace, embrace the comfort, old barriers/walls disappear - new flowing in, silhouette of a songbird; ocean receding on beach at night.

Q: Is there anything else that wants to be known, understood, or realized? What else?

How it's been before, comfort zones - esp. social "cliques /friends," Co-Creation - not just us creating CSL-T - everyone has opportunity to participate / All is well..., colorful suds, everything is as it ought to be, people different and yet being here - all popping up, a bed tightly made up.

| | |
|--------------------------------------------------------------------------------------------------------------------------------------------------------------------------------------------------------------------------------------------------------------------------------------------------------------------------------------------------------------------------------------------------------------------------------------------------------------------------------------------------------------------------------------------------------------------------------------------------------------------------------------------------------------------------------------------------------------------------------------------------|--------------------------------|
| 3 Checking In (briefly, please) | All |
| 4 Last Month's Minutes | Done |
| 5 Call to Audience | Maria |
| 6 Financial/Stewardship Report | Janet |
| 6a Current Financial Reporting | Additional reports pages 10-13 |
| 6b New Minister Salary A salary range was discussed and agreed upon. Finances were reviewed and minister salary was discussed. It was agreed that previous salary was too low. It was discussed that an administrative person is important to hire also after the minister is hired, so minister can grow the community. At the present time CSLT is not meeting its current expenses. In the past we have not spent money we did not have. The CSLT profile cannot be finished until there is a salary range. Some ideas: minister work part time with specific days off and honor them, learn how to do the admin part because they will be the supervisor of the admin, to have an incentive pay package based on amount of donations. | |
| 6c Director to Arizona Corporation Commission (ACC) Update: Janet is the Director and Statutory Agent for the ACC, and all titled board members are listed -Maria as President, Chris as VP, Maddie as Sec, and Janet as Treas. | |
| 6f Budget Janet and Maria will look at the budget for the upcoming year at the end of June. | |
| 6g Operating expenses For 2023, the average monthly deficit is \$1,800. It was suggested that funds be moved out of the Education account into Chase General Ops Checking, leaving \$3,000 for scholarships in the account. It was asked if some of the money could be put in a CD. No decision was made to move money. | |
| 7 Current Business Items | All |
| 7a 911 S Craycroft facility update Progress has been made on removing the weeds. Recycling is done on every other Thursday morning. Chris will put the recycling bin out to the curb when necessary. | |

7b. Live Theater Workshop (LTW) update Janet and Maria met with Michael Martinez to talk about the lease. We told him that we lose momentum when we cannot meet in person. There will be no Sundays when we will not be able to meet at LTW for the term of the contract ending Dec. 31, 2023. It was agreed CSLT would meet primarily in the Children’s theatre, and occasionally be moved to the big theatre and not have any Sundays we cannot use one of the theatres. The Children’s theatre has a larger foyer that we can have a small book table. Also, we asked to use LTW coffee machine (we will buy our own supplies). We can have coffee under the canopy. We have one volunteer for the book table and will need a volunteer for coffee duties. There will be no Sundays when we will not be able to meet at LTW. We will be online from April 30 to June 11. There has been a bandwidth issue at LTW, and it was suggested that CSLT has a “hotspot” to extend/stabilize our bandwidth. Janet did a test with her phone, and it worked. Maria researched Tracfone options for hotspot device. It was decided that purchase of the phone would wait until it is known how much data would be used for each service. Information is in Section 6, after financial report.

7c Revised April Minutes The board approved the revised minutes for April 20,2023 meeting.

8 Review of Current Activities

8a Education

| | | |
|---------------------------------------------------------------------------------------------------------------------------------------------------------------------------------|--------------------------------------------------------------------------------------------------------------------------------------------------------------------------------------------------------------------------------------------------------------------------------------------------------------------------------------------------------------------------------------------------------------------------------------------------------------------|-------|
| 8b Youth | Unless otherwise agreed to, it was agreed to that new class facilitator split be 75/25. Any cash donations collected by the facilitator should be sent to the office with a note on who gave what amount if known. Sharon Whealy, RScP taught the class Embracing Change April 5 – April 25. In May Sharon and her prayer partner, Linda Connolly will teach the class Prosperity – Survive to Thrive! Using Edwene Gaines’, The Four Spiritual Laws of Prosperity | Maria |
| 8c Board Liaisons | On hold | Maria |
| 8d Community & Growth | No change at this point | Maria |
| Credo: CSLT inspires spiritual expression in community with all and offers an accepting, loving, and peaceful way of living a joyful, healthier, and more abundant life. | Have you checked with your team members or leaders to see how they are doing? Would any of your teams appreciate more volunteers? | Maria |

CSLT Online Community Presence:

Zoom account: There is one CSLT Zoom account. On Sunday there are an average of 11 participants.

YouTube: There are now 179 subscribers up from 175. The recordings of our online services continue to be viewed on YouTube. We also live-stream our complete Sunday service on YouTube (with between 3-5 views (average) during the live service), though we are only recording the talk and prayer, per our previous agreement with the band. There was a total of 243 views in April, which was a decrease from March’s 284 views. The watch time in April was 23.7 hours down 12.4 hours from March’s 36.1 hours. Our most watched service in April was April 2 with Cerise Patron with 65 views, followed by April 9, Sharon Whealy, RScP with 55 views. The live streaming viewers has increased from 32 in March to 41 in April.

Facebook: As of May, we have 974 followers (up 6 from last month and 942 likes (up 7 from last month). The Facebook page is being updated by Madeline. Thank you Maddy!

Instagram: As of May 13, we have 131 Instagram followers (up 8 from March) & 221 posts (12 posts made). Instagram posts are being made for Sunday Service and being sent to the speaker to post. If posting on Instagram is fun for you, contact the office to join the Instagram team.

Newsletter Statistics: Four newsletters were sent during April to between 533-538 subscribers. Between 268-288 people (52-55%) opened them, and 15-22% of those who opened also clicked on something for further reading. Five newsletters were sent during March to between 535-537 subscribers. Between 212-300 people (40-57%) opened them, and 20-23% of those who opened also clicked on something for further reading.

Morning Meditation. Daily practice continues. The current leaders have agreed to continue the daily morning practice through end of 2023. We know that those participating get good value from the practice, and we/they are open to having others join in as they feel intrigued and called.

8e Covid 19 Live Theatre Workshop has protocols in place which we abide by. Masks are encouraged, not mandatory. People are encouraged to distance as they feel the need. We augment their practices with color-coded nametags (green = hugs ok, yellow = ask me first, red = no contact, please).

8f Small Groups

Prosperity Mastermind Group continue to meet online. The group continues to meet 1st and 3rd Sundays 1pm on Zoom. New graduates invited to participate. Five people regularly attend. Good results are being achieved.

Men's Group, which was begun in 2014(!) meets twice monthly in person, with some participants joining the conversation from a shared zoom room. Chris is to check with the group to see if it may be advertised in the bulletin and newsletter.

Janet Salese hosts **Full Moon Labyrinth Walk** as a regular activity for which we advertise and encourage participation of those interested. On May 5 there were 9 participants. The 2023 schedule: Jan 6, 7pm; Feb 5, 7pm; Mar 7, 7pm; Apr 5, 7pm; May 5, 8pm; June 3, 8pm; Jul 3, 8pm; Aug 1, 8pm; Aug 30, 8pm; Sept 29, 7pm; Oct 28, 7pm; Nov 27, 7pm; Dec 26, 7pm.

Sacred Cinema – Meets on the third Sunday of the month at 2 pm on Zoom. April 16 movie was “I have arrived. I am home,” a documentary about Thich Nhat Hanh with 5 participants. May 22 movie is “Onward.”

Lunch Bunch -- Madeline hosts a regular gathering at Basha's food court (Swan and Ft Lowell) the 4th Sunday of each month. On April 23 there were 11 participants. There will be no May lunch bunch as we are on Zoom. Lunch bunch will resume June 25. Thank you, Madeline.

8g Other Places We Might Advertise? – Madeline

Madeline continues to share our upcoming events through our Facebook page and will remove Rev Janis' picture and replace it with CSLT logo. Mariann updated Natural Awakenings each month. Rev Janis' name was removed from ads. Also, Mariann put in an ad for Cerise Patron on April 2. The deadline for uploading events and activities is the 10th of the previous month. (April 2023 events were uploaded by March 10)

8h. Directory – Janet. Directory will be updated and distributed at the end of the month. Someone had inquired about a CSLT business directory. This item was to be tabled until we were meeting in person again. (Janet is not interested in taking it on at this time). The directory contains 34 persons.

8i. CSL Member Council Meeting – Linda Full May report in Team Reports/CSL Member Council Meeting. Thank you Linda!

8j. Spiritual Living Circles – Linda Online Virtual Spiritual Living Circles are held every two Thursdays 7 – 8:30 MT To register csl.org/spiritual-living-circles. The meeting will be on 5/18 and will discuss the article in the May article, “The Shadow: Healing Through Revealing.”

8k. Leadership Training Opportunities for Board Members –On hold.

8l. Outreach/In-person marketing?

Maria to check out ‘Meet Me at Maynards’ is on hold until new minister arrives.

8m. Location of documentation

- Is on computer, thumb drive and hard copy in file under “Trouble Shooting.”

Hard copy will be put in safe

| |
|---------------------------------------------------------------------------------------------------------------------------------------------------------------------------------------------------------------------------------------------------------------------------------------------------------------------------------------------------------------------------------------------------------------------------------------------------------------------------------------------------------------------------------------------------------|
| <ul style="list-style-type: none"> • 9 2022-2023 Planning Cycle |
| 9a Planning Mtg? (none needed at this time) |
| 9b Board Mtgs The next full Board Meeting is June 22 (fourth Thursday) at 4pm on zoom. Another meeting is scheduled on Zoom after Sunday Celebration June 25. |
| 9c Guest Speakers Sharon has taken on the task of getting presenters. Thank you, Sharon! May presenters: Eugene Holden, RScP, Rev. Patrick Harbula, Dr. Karmen Smith, Sharon Whealy, RScP. Each guest speaker will use the global themes, as prepared by csl.org. Maria will host Zoom Service on May 14, 22, then Mariann will be the host May 28, June 4, and 11. Susan and the band are co-hosts. Maria wrote instructions and sent them to Mariann and put a copy of the file in the "Trouble Shooting" folder on office computer. |
| 10 New Business for this Meeting? |
| 10a New Minister Nominating Committee Update/ Preparing Profile On Tuesday, May 23 members of the committee will meet at the office to work on preparing the documents for the New Minister. There are three documents the committee are working on: Profile (specific form for home office), Video, and pdf a document describing CSLT (a combination of profile and video, but in still format). |
| 10b Review Membership list CSLT has 30 members. Members who have left CSLT are welcome back according to bylaws. Janet will type up and file. |
| 10c Classes: In May, Sharon and Linda Connolly (Sacramento-CSL) are teaching a 5-week class on Edwene Gaines' book, <i>The Four Spiritual Laws of Prosperity</i> , on Tuesdays from 5:30 – 7:30pm on Zoom. There is a \$50 suggested contribution. |
| 10d Advertise events update There was a request to advertise an upcoming concert in the newsletter. An offer to hand out flyers was made. The distinction was made that we communicate about CSLT activities that we do as a group, not promoting a specific event. The board does have to approve of CSLT events. Mariann will look for guidelines. |
| 10e Vantage West has CD options from 6 to 60 months, with a 6-month CD at 3.25% with a minimum of \$500. |

| | |
|---------------------|---------------------------------------------------------------------------------------------------------------------------------------------------------------------------|
| Tabled Items | Next steps for Consolidated Community Campus: Further discussion of this item is tabled until Center and community growth clarifies our needs. |
| | Small group Requirements - Further discussion of this topic tabled for now. |
| | Paid Administrative support in the office, deferred until new minister arrives. |
| | Idea parked until after we return to meeting in person: Creation (or Reviving) of a CSLT Business Directory for those who wish to advertise their services to each other. |
| | Deferred Coffee News advertising |

| |
|-------------------------------------------------------------------------------------------------------------------------------------------------------------------------------------------------------------------------------------------------------------|
| 11 New Business Items for Next Meeting? |
| Board will have a meeting every 4 th Sunday after service to check in with one another. |
| Update of Selection Committee: Board members: Mariann Moery (chairperson), Linda Bullock (co-chair), Practitioners: Sharon Whealy, RScP and Maria Schuchardt, RScP, Leaders: Pat Masters, Marya Wheeler and lay members, Michael Zimmerman, Tamara Morrison |

12 Sunday Gratuities

| | |
|-------------|--------------------------------------------------------------|
| Date | Honoree |
| 4/30 Zoom | Rev. Steph St.Amanad, Farmers, groceries, those that feed us |

| | |
|-----------|----------------------------------------------------------------------------------------|
| 5/7 Zoom | Eugene Holden, RScP, May birthdays |
| 5/14 Zoom | Rev. Patrick Harbula, (Mother's Day) Nurturing people, which we all are |
| 5/21 Zoom | Dr. Karmen Smith, transportation people |
| 5/28 Zoom | Sharon Whealy, RScP, all those that serve |
| 6/4 Zoom | Rev. Julie Moret, /birthdays |
| 6/11 Zoom | Rev. Patricia VanWoerkom, Band |
| 6/18 | Rev. Rhonda Tretsven, Father's Day |
| 6/25 | Rev. Tracey Harrick, Welcome summer |
| 7/2 | Rev. Nita Strauss, Birthdays, anniversaries, 4 th of July, Independence Day |
| 7/9 | Alexandra Musser, RScP, |
| 7/16 | Sharon Whealy, RScP |
| 7/23 | Rev. Jeff Hargis |

13 Responsible Board Member @LTW Schedule (also responsible for uploading video, help available)

Sunday _____ Who?

4/30 to and including 6/11 Maria/Mariann ZOOM

Back in person on June 18!!

| | 18-Jun | 25-Jun | 2-Jul |
|----------------------------------------|-----------------------|--------------------------|------------------|
| Meditation | Tamara | Sharon | Maria |
| Speaker | Rev. Rhonda Tretsven | Rev. Tracey Harrick | Rev Nita Strauss |
| Board member in charge | Linda | Madeline/Marianne | Maria |
| Music Start 9:30 | Band | Band | Band |
| Host | Linda | Marya | Marya |
| Practitioner/ Spiritual Thought | Maria | Sharon | Maria |
| Introduce speaker | Maria | Sharon | Maria |
| Speaker | Rev. Rhonda Tretsven | Rev. Tracey Harrick | Rev Nita Strauss |
| Gratitudes | Linda | Mariann | |
| Closing-Share Covenant | Linda | Mariann | |
| Upload | Linda | Mariann | |
| Gratitudes | Rev. Rhonda and _____ | Rev. Tracey and _____ | Rev Nita Straus |
| | | | |
| Board Article Due | Chris | Maria | Madeline |
| | | | |
| | | LTW Board Meeting | |
| | | | |
| | | Lunch Bunch | |
| | | | |

14 Newsletter Articles: Due Who is writing

- 5/22 Janet
- 5/28 Linda
- 6/4 Sharon
- 6/11 Mariann
- 6/18 Chris
- 6/25 Maria

7/2 Madeline
 7/9 Janet
 7/16 Linda

Rotation starting April 16: Sharon →Mariann →Chris → Maria →Madeline → Janet → Linda

15 Calendar Review Pages 6 - 8

16 Team Reports Pages 8 - 10

Adjourn and Pray Out

Calendar (Look Ahead!)

(Sundays held on Zoom only, and not held at Live Theater Workshops, indicated by ZOOM)

| May | | | | | | |
|-----------------------------------------------------------------|----------------------------------|---------------------------------------------|----|---------------------------------------------|----------------------------------------|----|
| 30 ZOOM Rev. Steph St.Amanad Speaking | 1 MAY | 2 Prosperity - Survive to Thrive! 5:30-730 | 3 | 4 Vision Core (z) 6:30pm | 5 Full Moon Labyrinth Walk Janet 8:00p | 6 |
| 7 ZOOM Eugene Holden, RScP Speaking Prosperity Alums 1pm | 8 | 9 Prosperity - Survive to Thrive! 5:30-730 | 10 | 11 | 12 | 13 |
| 14 ZOOM Rev. Patrick Harbula Speaking | 15 | 16 Prosperity - Survive to Thrive! 5:30-730 | 17 | 18 CSLT Creatives 12:30p Board Mtg (z), 4pm | 19 | 20 |
| 21 ZOOM Dr, Karmen Smith Speaking Prosperity Alums 1pm Movie 2p | 22 Gratitude Rainshower 6:30-7pm | 23 Prosperity - Survive to Thrive! 5:30-730 | 24 | 25 | 26 | 27 |

| June | | | | | | |
|----------------------------------------------------|-------|---------------------------------------------|-------|-------------------------------|-------|----------------------------------------|
| 28 Zoom Sharon Whealy, RScP Speaking Board meeting | 29 | 30 Prosperity - Survive to Thrive! 5:30-730 | 31 | 1 June Vision Core (z) 6:30pm | 2 | 3 Full Moon Labyrinth Walk Janet 8:00p |
| Maria after SMT | Maria | Maria | Maria | Maria | Maria | Maria |
| 4 Zoom Rev Julie Moret Speaking | 5 | 6 | 7 | 8 | 9 | 10 |

| | | | | | | |
|----------------------------------------------------------------------------------------------------------|----------------------------------------|---------------|---------------|---------------------------------------------------|---------------|---------------|
| Prosperity Alums 1pm Maria | Maria | Maria | Maria | CSLT Creatives 12:30 -2:30 Maria | Maria | Maria |
| 11 Zoom Rev. Patricia VanWoerkom Maria | Maria | Maria | Maria | | | |
| 18 Rev Rhonda Tretsven Speaking Prosperity Alums 1pm Movie 2p | | | | 22 Board Mtg (z), 4pm | | |
| 25 Rev Tracey Harrick speaking Board meeting at LTW 10:30 Lunch Bunch @ Bashas | 26 Gratitude Rainshower 6:30-7pm | Sharon | Sharon | Sharon | Sharon | Sharon |

| July | | | | | | |
|---------------------------------------------------------------------------------------------------------------------|-----------------------------------------------------------------------|------------------------------------------------------------|--------------------------------------------|----------------------------------------------|--------------|------------------------|
| 2 Rev Nita Strauss speaking Prosperity Alums 1pm Sharon | 3 Full Moon Labyrinth Walk Janet 8:00pm Sharon | | | | | |
| 9 Alexandra Musser, RScP speaking | | | 12 Sharon class | | | 15 Janet |
| 16 Sharon Whealy, RScP speaking Prosperity Alums 1pm Movie 2p Janet | Janet | Janet | 19 Sharon class Janet | 20 Board Mtg (z), 4pm Janet | Janet | Janet |
| 23 Rev. Jeff Hargis speaking Board meeting at LTW 10:30 Lunch Bunch @ Bashas Janet | Janet | 25 Gratitude Rainshower 6:30-7pm Janet | 26 Sharon class | | | |

| | | | | | | |
|----|----|----|----|----|----|--|
| 30 | 31 | 27 | 28 | 29 | 30 | |
|----|----|----|----|----|----|--|

**CSLT Board Agenda – May17, 2023
Team Reports for (mostly) April**

ADMINISTRATION

Submitted by Maria Schuchardt

We’ve simplified everything that can be simplified, and it seems to be working alright. The Board is taking turns creating the Sunday bulletins as part of their Sunday responsibilities. Janet has taken on many duties. Thank you, Janet!!

ALTARED STATES

Submitted by Maria Schuchardt

Mariann Moery has become liaison for Altared States. Team members provide beautiful arrangement for Sunday services. If you wish to provide flowers in honor of a special event or a loved one, contact Barbara Arissa or another member of this team.

CSL Member Council Meeting

Submitted by Linda Bullock

May 15, 2023

Today’s presentation was from Field Services. Team members were introduced and gave brief updates and/or listed their program assignments. The team is:

- Reverend Barbara Bue – Director**
- Reverend Julie Lobato – Field Services Team Leader**
- Revenue Kathleen Sibley – Minister Services**
- Linda Summers – Practitioner Services**
- Rebecca Hiraoka – Circles Program, World Ministry of Prayer, Virtual Practitioner Program**
- Annabeth Rickley – Youth Services**

Statistics were given for 2022: 13 new communities were created (an average of 19 are in process so far this year); 30 pulpits were filled; 24 new ministers; 27 ordinations; 109 new practitioners (will probably be around 120 this year).

Mention was made several times of James Peak, Director of IT, and how his efforts are making processes easier and quicker, freeing up time for staff to engage directly with ministers and others. In many areas Field Services is streamlining processes that can be automated.

Director – Barbara Bue: She seeks to make it easier for people to do their jobs so that she and staff are more available to help ministers to solve problems by supporting and coaching. Next she intends to grow the leaders on her team and to help with the Operational side of CSL.

FS Team Leader (Community Services) – Julie Lobato: Julie is in charge of the Interim Minister Program; she meets with Minister Selection Committees; she is finishing up a new Transformational Minister Class. She plans to organize an Ethics Chair Committee Meeting.

Minister Services – Kathleen Sibley: Kathleen thinks of herself as the minister to ministers. She deals with minister renewals, affiliations, and ordinations. She screens ministers wanting to affiliate with CSL. She counsels newer ministers. Kathleen works with the Minister and Practitioner Licensing Committee, including setting up panels. Ministerial panels are held once per year; practitioner panels are held three times per year. When a new minister affiliates with CSL, Kathleen sets them up with an experienced minister who can help with the transition. A new person will be taking over this position and will be trained by Kathleen, who is leaving to pursue a Doctor of Divinity degree. She wants to learn what is new in the current spirituality that will help our ministers.

Practitioner Services – Linda Summers: There are approximately 4,000 practitioners in the field. There are also practitioners who want to affiliate with CSL and practitioners who want to be reinstated.

Circles Program, World Ministry of Prayer, Virtual Practitioner Program – Rebecca Hiraoka: Rebecca collaborates with Julie on the Virtual Practitioner program which was begun by Julie. She has met with the Microsoft team and other study groups. She launched a newsletter with Holly Sharp and Kathleen Sibley, working with the Communications team. She oversees the World Ministry of Prayer.

Youth Services – Annabeth Rickley: This is a new full-time position. Annabeth is committed to developing reputable training for our youth. She has previously been in charge of CSL Teen Camp. A new Curriculum Committee for Youth Services will be available @ csl.org. A Spiritual Sangha Meeting is set for June 10 at 10 am. Annabeth will be creating a monthly CSL newsletter dealing with Youth Services.

ECCLESIASTICAL CORE

Submitted by Maria Schuchardt

Sharon Whealy, RScP has taken on the responsibility of scheduling speakers. Thank you, Sharon. The upcoming speakers are 5/14 Rev. Patrick Harbula, 5/21 Dr. Karmen Smith, 5/28 Sharon Whealy, RScP, 6/4 Rev Julie Moret, 6/11 Rev. Patricia VanWoerkom, 6/18 Rev. Rhonda Tretsven, 6/25 Rev. Tracey Harrick, 7/2 Rev. Nita Strauss, 7/9 Alexandra Musser, RScP, 7/16 Sharon Whealy, RScP, 7/23 Rev. Jeff Hargis. Sharon has made a spreadsheet that is on Google Docs. This document is updated and most accurate.

Sharon also continues to support our Center with Sunday morning meditations and platform twice each month. She also routinely covers 5th Sunday platform and meditation and hosts a monthly gratitude rainshower. Maria Schuchardt offers the Sunday Morning Meditation and platform on the 1st Sunday each month, and then platform duties 3rd Sunday. Tamara Morrison continues to provide the pre-service meditation on 3rd Sunday. We remain grateful for this continuing support. Daily morning meditation practice (on zoom) continues. Madeline has assumed oversight of this group. Thank you, Madeline. Committed volunteers, and committed attendees continue to support it. New people join intermittently and are welcomed.

EDUCATION CORE

Submitted by Maria Schuchardt

Sharon finished her class Embracing Change which was held in April. Sharon and Linda Connolly (Sacramento-CSL) are conducting the class “Prosperity – Survive to Thrive,” using Edwene Gaine’s wonderful book *The Four Spiritual Laws of Prosperity* on Tuesday evenings. Cost for class is \$50.

HOSTS

Submitted by Maria Schuchardt

Marya Wheeler is team leader, with Jeff Jackson, Pat Masters, Linda Bullock. Marya is looking for another host.

MINISTER'S TRAVEL PLANS

MUSIC/SOUND

Submitted by Chris Wheeler

We are so grateful for our music team. The music team continues to work through how to create amazing live music in our intimate theater location and continues to learn how to adapt when various band members have to miss a Sunday. Michael Zimmerman covers for David Prouty when he needs to be elsewhere on a Sunday. Much appreciated! During April the opening song was, *We are the Harvest*, and in May the opening song is *Welcome to this Place*.

Stephen Frankenfield and Tina Evens are our techs when we are at LTW..

New Minister Search Committee

Vision Core Notes, begun April 6, 2023, 6:30pm

Submitted by Chris Wheeler

Thank you, Chris. Participating: Marya Wheeler, Madeline Pallanes.

What's the highest vision, highest ideal for Center for Spiritual Living Tucson?

Mountains, Mt. Lemmon, Alps w snow, house in the Alps with split rail fence.

Metal pinwheels like in Sedona, water buffalo, summer fun and water; feeling of freedom, happy people engaging with each other.

What changes, evolves, becomes (releases, moves in or away) as this vision comes into being?

Congregation grows, location presents itself, manifests, Abundance * 1000*universe.

Dancing groups, Wilbur the Wildcat, Cat in the Hat, Thing 1 & Thing 2, people changing moving on, new people coming in.

Is there anything else that wants to be known, realized, or understood?

New minister will be an essential part of the equation, document on parchment, top hat, magic. Younger people coming in.

7 Finance/Stewardship Report

Treasurer, Janet

Executive Summary: April was a 5 Sunday month. Our attendance was slowing increasing. In April we averaged 27 in-person attendance and 13 online before returning to online only on April 30. The Board continues to vision for a growing Center.

The Board has agreed to sustain and hold the vision of increased attendance by individuals willing and able to participate (in all ways and on many levels), which allows us opportunities to expand our reach in Tucson.

| | Total Sunday Offerings and P+ | New Designated Monies* | Total Income | Total Expenses | Net Income | \$ per Weekly Attendee | Average Weekly Attendance |
|----------|-------------------------------|------------------------|--------------|----------------|------------|------------------------|---------------------------|
| April | \$7,595 | \$2,026 | \$8,148 | \$9,045 | <\$897> | \$40.77 | 38+ |
| March | \$5,981 | <\$274> | \$6,359 | \$8,427 | <\$2,068> | \$38.29 | 40+ |
| February | \$6,199 | <\$675> | \$6,679 | \$8,286 | <1,607> | \$39.73 | 39+ |
| January | \$6,043 | 0 | \$6,524 | \$9,032 | <\$2,508> | \$33.95 | 36+ |

*Presently we have a stand-alone Facility Fund, Scholarship Fund, a Practitioner Fund, an Opportunity Fund and a Compassionate Heart fund. All are designated and are kept separated from Total Income or Total Expenses.

Monies were used from the Opportunity Fund to pay for the Co-Creation weekend with Dr. Kathy Hearn and laptop used to broadcast Sunday service. April's New Designated Monies reflects increase in investments.

| Cash Balances | April | March | February | January |
|----------------------------------------|------------------|------------------|------------------|------------------|
| Chase General Ops Checking | \$15,773 | \$14,921 | \$15,820 | \$15,592 |
| Vantage W. Gen Ops Checking | \$34,530 | \$33,722 | \$38,714 | \$41,227 |
| Vantage W. Additional Savings | \$10,015 | \$10,015 | \$10,014 | \$10,013 |
| Vantage W. Education Savings | \$14,902 | \$14,901 | \$14,932 | \$14,826 |
| VWCU Practitioners' Savings | \$412 | \$412 | \$412 | \$412 |
| SubTotal | \$75,632 | \$73,971 | \$79,892 | \$82,070 |
| Chase Facility Fund Savings | \$17,209 | \$17,208 | \$17,208 | \$17,208 |
| Vantage W. Facility Fund Savings | \$4,722 | \$4,722 | \$4,721 | \$4,721 |
| Vantage West CU Facility Fund 15-mo CD | \$101,389 | \$101,032 | \$100,709 | \$100,354 |
| VWCU Imprmnt/Opportunity Fund* | \$24,415 | \$27,443 | \$27,419 | \$28,100 |
| Facility Fund Invest Acct /Endowment ☐ | \$19,521 | \$17,150 | \$14,450 | \$14,450 |
| Total | \$242,888 | \$241,526 | \$244,399 | \$246,903 |

* We received anonymous designated gifts, part of which is to be used for 'sustainable' marketing activities. We called this the Opportunity Fund. Out of this account we have funded the website upgrade & partially funded of our Office improvement fund. We have also used this fund to test out other advertising opportunities and will use it for buying video equipment that will allow us to live-stream, when we return to in person services. (Bought video-equipment in August-September.)

☐ The 1st quarter report on our investment in the SOM Foundation Endowment shows another slight increase as shown in April ☆

Comparison between April 2022 and April 2023

| | | |
|-------------------------|----------------------|----------|
| Attendance/Sunday | I Ncreased by | 9 |
| Offerings/month | I Ncreased by | \$ 0 |
| Offerings/person/Sunday | D Ecreased by | \$ 25.27 |
| Total Income | D Ecreased by | \$ 59 |
| Expenses | D Ecreased by | \$ 566 |
| Net Income | I Ncreased by | \$ 507 |

After 27 months of online only services, we begin to have hybrid Sundays with in-person attendance as well as zoom attendees, and YouTube participants. These last 3+ years have been a learning curve for us all.

Status of the CSLT Facility Fund

Facility Fund Investment Acct Deposits: Initial Deposit \$50,000 (Nov12), Deposit \$10,236 (Mar13) Deposit \$15,188 (Dec13) Investment Account closed December 2016 to purchase raw land at 4961 E. 22nd St. On June 3, 2019 we sold our raw land on 22nd St, and have agreed to serve as 'bank' for the buyer for five years with annual payments, on June 3 of each year.

| Date | CSLT Contributions | Various Projects & Interest | Personal Donations | \$ Total |
|---------------|--------------------|-----------------------------|--------------------|----------|
| Year End 2009 | | | | 29,365 |
| Year End 2010 | | | | 48,710 |
| Year End 2011 | | | | 70,361 |
| Year End 2012 | 6,800 | 1,045 | 1,430 | 79,636 |

| | | | | |
|-------------------------------------------|-----------------|-------------|--------|---------|
| Matching Fund Reserves | | | 2,900 | 82,536 |
| Year End 2013 (Inspection) | <1,800> | 4,780 | 3,327 | 88,843 |
| Year End 2014 | <600> | 1,789 | 25,884 | 115,936 |
| Year End 2015 (Moved to River Rd) | <5,223> | <1,786> | 7,109 | 116,027 |
| Year End 2016 (Purchased land) | <102,024> | 2,068 | 2,440 | 18,511 |
| Year End 2017 (InvAcctClosed.) | | 164 | 1,500 | 20,175 |
| Year End 2018 | | 112 | 1,000 | 21,287 |
| Year End 2019 (sold land & bought office) | (net) <17,146>† | | 200 | 4,341 |
| Year End 2020 | | 47,479 ☺ +3 | 25 | 53,288 |
| Year End 2021 | | 46,587 ☺ ☐ | | 99,875 |
| Year End 2022 | | 39,204 ☺ ☆ | | 139,079 |
| April 2023 HVAC maintenance/repair | | <\$345> | | |

† Facility Fund expenses to relocate to our Education Center have been completed (for now). In total we spent \$59,330.32 for the down payment and the repairs required to meet the requirements of our mortgage holder. A detailed breakdown of expenditures was presented in the January 16th Board minutes. We paid \$1,440 of capital expenses from General Operations during the move.

☺ The annual payment on the sale of the 22nd St property initiated in 2019.

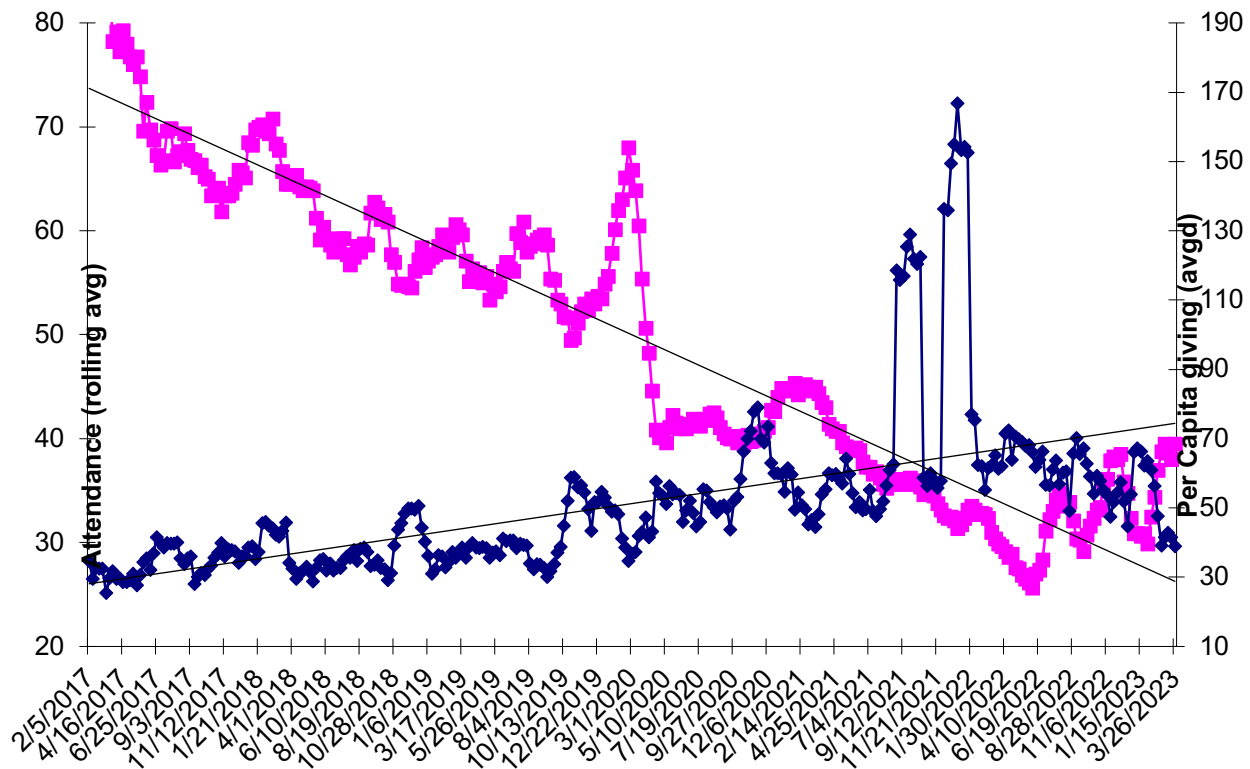
☐ We received our first quarterly report on our investment in the SOM Foundation Endowment, discussed in Cash Balances above.

☆ Reflects a \$9,091 decrease in value of our investment in the SOM Foundation Endowment, with a slight uptick in the 4th quarter. Discussed in Cash Balances above. Also includes money spent on office building maintenance.

Center for Spiritual Living Tucson
Budget vs. Actuals: 2023 Budget - FY23 P&L
February - April, 2023

| | Feb 2023 | | Mar 2023 | | Apr 2023 | | Total | |
|------------------------------------------|---------------|---------------|---------------|---------------|---------------|---------------|---------------|---------------|
| | Actual | Budget | Actual | Budget | Actual | Budget | Actual | Budget |
| Income | | | | | | | | |
| 40000 Contributions | | | | | | | 0 | 0 |
| 40101 Sunday Offerings | 2,747 | 8,000 | 3,649 | 8,000 | 3,685 | 8,000 | 10,081 | 24,000 |
| 40110 Online Contri | 3,452 | 2,000 | 2,332 | 2,000 | 3,910 | 2,000 | 9,694 | 6,000 |
| Total 40000 Contributions | 6,199 | 10,000 | 5,981 | 10,000 | 7,595 | 10,000 | 19,775 | 30,000 |
| Total Income | 6,591 | 10,000 | 6,329 | 10,000 | 8,148 | 10,000 | 21,068 | 30,000 |
| Expenses | | | | | | | | |
| Total 00 ADMINISTRATION | 3,872 | 5,246 | 4,272 | 5,346 | 4,100 | 5,096 | 12,244 | 15,688 |
| Total 02 MINISTER COMPENSATION | 2,070 | 2,070 | 0 | 2,070 | 0 | 2,070 | 2,070 | 6,210 |
| Total 03 MUSIC EXPENSE | 1,665 | 1,910 | 1,700 | 1,810 | 2,280 | 2,150 | 5,645 | 5,870 |
| Total 04 MINISTRY EXPENSE | 0 | 1,045 | 0 | 20 | 0 | 45 | 0 | 1,110 |
| Total 05 SUNDAY SERVICE EXP | 690 | 880 | 890 | 880 | 1,490 | 880 | 3,070 | 2,640 |
| Total 06 TITHING / CHARITABLE GIVING | 930 | 1,500 | 897 | 1,500 | 1,139 | 1,500 | 2,966 | 4,500 |
| Total 07 LEADERSHIP DEVELOPMENT EXP | 0 | 0 | -145 | 0 | 0 | 0 | -145 | 0 |
| 08 BOOKSTORE EXPENSE | 36 | | 36 | | 36 | | 108 | 0 |
| 09 CLASS/WKSH/PT/ EVENT EXPENSE | | | 196 | | | | 196 | 0 |
| Total Expenses | 9,263 | 12,651 | 7,846 | 11,626 | 9,045 | 11,741 | 26,154 | 36,018 |
| Net Operating Income | -2,672 | -2,651 | -1,517 | -1,626 | -897 | -1,741 | -5,087 | -6,018 |
| Other Income | | | | | | | | |
| Total 81000 CLASS/WORKSHOP COST CENTER | 105 | 355 | -18 | 355 | 330 | 355 | 418 | 1,065 |
| Total 83000 SPECIAL EVENT REVENUE | -83 | 0 | 83 | 0 | 0 | 0 | 0 | 0 |
| Total 86000 FACILITY FUND REVENUE | 0 | 0 | 0 | 0 | -345 | 0 | -345 | 0 |
| Total 87000 Investments | 0 | 0 | 2,700 | 0 | 2,371 | 0 | 5,071 | 0 |
| 88000 Opportunity Fund | -697 | | -3,039 | | | | -3,736 | 0 |
| Total Other Income | -675 | 355 | -274 | 355 | 2,356 | 355 | 1,407 | 1,065 |
| Net Income | -3,347 | -2,296 | -1,791 | -1,271 | 1,459 | -1,386 | -3,680 | -4,953 |
| less designated | 697 | | 339 | | -2,026 | | -990 | |
| True Net | -2,650 | | -1,452 | | -567 | | -4,670 | |

This is a revised P&L from January 2023 to current. It reflects some accounting changes only. Attendance and Per-Person Giving Over Time



<https://www.tracfone.com/home>

galaxy a03s
galaxy a13 5g. \$119.99

**Samsung
Galaxy A03s**



~~\$99.99~~
\$49.99
Retail Price

Android 11

August 2021

**Samsung
Galaxy A13 5G**



~~\$169.99~~
\$119.99
Retail Price

Android 12. Both can be upgraded

March 2022

- Wi-Fi Direct
- Wi-Fi Hotspot
- Wi-Fi Display

- Dual Band
- Wi-Fi Direct
- Wi-Fi Hotspot
- Wi-Fi Display

Another phone A23: March 4, 2022 A23 5G: **August 5, 2022**

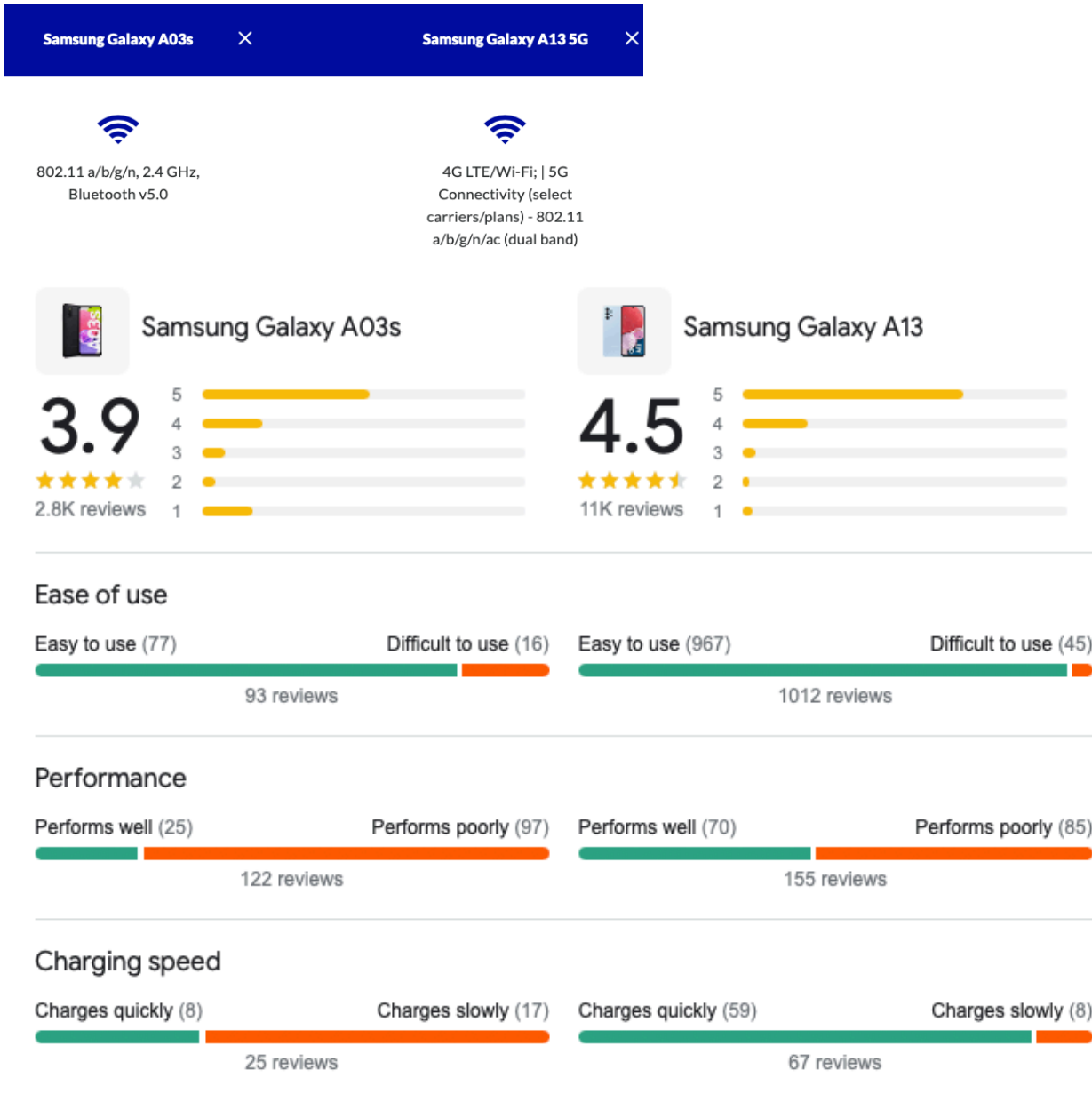
Galaxy A14 5G released Jan 2023 OS Android 13 (latest) \$199 (did not have this listed on Tracfone)

How to Set Up Mobile Hotspot on **Samsung Galaxy A13** - Create WiFi Hotspot

<https://www.youtube.com/watch?v=YmhwLRyX0DU>

Year plan is \$199, 24 Gb of data

Additional 3GB data = \$30



<https://www.intel.com/content/www/us/en/tech-tips-and-tricks/what-is-a-hotspot.html>

Using Your Smartphone as a Mobile Hotspot

If you're in a location that doesn't have a hotspot and you want to connect your laptop to the Internet, you can use your phone as a mobile Wi-Fi hotspot through a process called "tethering." This allows your laptop to access the Internet and share your smartphone's data connection.

While the set-up steps vary depending on your smartphone and your Internet service provider, you can usually find the instructions in your phone's Settings or Manage Connections menu. For security, you'll want to make sure that you use a Wi-Fi password so that nearby Internet users can't access your phone or laptop. Also, be

aware that tethering your laptop to your phone will use your phone's data allowance; so be sure to keep an eye on your usage to avoid any overage fees.

Now that you're connected, that's it, right? Well, not exactly. You should be aware that while using Wi-Fi hotspots is a convenient way to stay connected with work, family, and friends. Hotspot connectivity also presents some security risks.