



**Board of Trustees**  
**Minutes from**  
**March 24 Meeting, 4pm (zoom)**

1	Call to Order and Evocation	Pg 2	Maria/Rev Janis	5 min
2	Visioning		Rev Janis	15 min
3	Checking In		All	5 min
4	Last Month's Minutes		Done	0 min
5	Call to Audience		Maria	1 min
6	Finance/Stewardship Report	Pgs 9-12	Janet	10 min
	Discussion of current fiscal status			
7	Review Current Business Items	Pg 2		
	911 S. Craycroft (office) update		Rev Janis	1 min
	Prospective New Location update			
8a-o	Review Current Activities	Pgs 2-4	All	15 min
	(incl. questions raised or deferred at last Board meeting)			
9	The 2020-2021 Planning Cycle	Pg 4		
	Planning Meeting Needed?		All	2 min
	Next Board meeting		All	2 min
	Upcoming Guest Speakers		Rev Janis	1 min
10	New Business for This Meeting?	Pg 4	All	10 min
	Debrief Major Donor Dinner			
11	New Business for Next/Future Meeting?	Pg 5	All	2 min
12	Sunday's Gratitudes	Pg 5	All	5 min
13	Review CIAB Schedule	On hiatus	All	0 min
14	Lead Newsletter Articles	Pg 5	All	1 min
15	Six Month Look Ahead on Calendar	Pgs 6-7	All	5 min
16	Team Reports	Pgs 7-9	All	2 min
	Adjourn and Pray out		Rev Janis	

Present: Maria Schuchardt, Chris Wheeler, Madeline Pallanes, Janet Salese, Rev Janis Farmer

Absent: none

In Service: Maria Schuchardt (Running the meeting), Rev Janis Farmer (Scribe, high watch, visioning)

Guests: none

Center for Spiritual Living Tucson  
Board Minutes from March 24, 2022 Meeting

**1 Call to Order/Evocation 4:15pm**

Maria/Rev Janis

**2 Visioning**

**Q: What is the Highest Vision or Highest Ideal for Center for Spiritual Living Tucson?**

A: A church of our own, maintenance person quarters, Lots of people, wood floors, joy; Big crowd; Side-by-side rectangles, grey and brown; Puffy white clouds in a blue sky; Clarity and unity, joyous forward movement.

**Q: What changes, evolves, or becomes (adapts & modifies) as this highest vision comes into existence?**

A: Knowing, trust, faith; Space opens up; Piano, high-definition color pixels; Pulling a chain/rope attached to a large block to move it; Wisdom, release discouragement, take up courage.

**Q: Is there anything else that wants to be known, understood, or realized? What else?**

A: Light, glistening lapis blue color; Lots of people eating ice cream sundaes; Inclusiveness; Arrow pointing up at a 45 degree angle; Drums leading a parade, banners, delight.

<b>3 Checking In (briefly, please)</b>		All
<b>4 Last Month's Minutes</b>		Done
<b>5 Call to Audience</b> no audience		Maria
<b>6 Financial/Stewardship Report</b>		Janet
<b>6a Current Financial Reporting</b>	Report attached, pages 9-12	
<b>7 Current Business Items</b>		Rev Janis
<p><b>7a 911 S Craycroft facilities update.</b></p> <ul style="list-style-type: none"> <li>• Have contacted gardeners to tidy weeds around the office. No sign of them yet.</li> <li>• Have offered the office space for Keith Gorley's Celebration of Life on March 26, 1:30-4:30pm. Family has decided they want to use it. Working out how to do livestreaming/recording.</li> </ul> <p><b>7b. New Sunday location update</b></p> <ul style="list-style-type: none"> <li>• Discussions continue. Have added the new location as an additional facility to be covered by our insurance when we are using it (The insurance agent for the new location wants to add their address to the policy so that they are notified if something changes with our insurance. We've requested that change of our insurance agent), and as a place where our personal property (electronics) is protected while stored, and in use.</li> <li>• Training on our electronic equipment is presently being scheduled so we can learn how to use the equipment that we own, and additional sound equipment has been purchased. We did not need the sound equipment when we used The Gregory on Sundays, but we do now, as our new host location does not have sound equipment.</li> <li>• We still need to make decisions about up-leveling our music license if we wish to livestream and record music. The quality of musical recordings we are likely to capture need to be considered.</li> </ul>		
<b>8 Review of Current Activities</b>		
<b>8a Education</b>	Classes continue. More planned. Full report, below.	Rev Janis
<b>8b Youth</b>	Nothing to report. Soliciting guidance from Home Office on how to gather youth at this time and what safety precautions are advised. Maria and Marya have started a conversation about what's possible.	Maria
<b>8c Board Liaisons</b>	Were you successful in contacting any of your team leaders or team members (that you haven't heard from or seen in the last 6 months)? Not this month.	All

<b>8d Community &amp; Growth</b>
<b>2021 Credo:</b> CSLT inspires spiritual expression in community with all and offers an accepting, loving, and peaceful way of living a joyful, healthier, and more abundant life. (We kept the 2020 Credo.)
<b>CSLT Community Presence:</b> The recordings of our online Service continue to be viewed on YouTube. During February there were 125 views (up) for 10.6 hours (normal-ish) and 108 total subscribers (increase of 10). Thanks to everyone who has subscribed! The two videos most watched were Jeff Hargis on February 27 and a normal service on February 20. Instagram: We have 89 Instagram followers (11 new ones). If posting on Instagram is fun for you, and you want to participate this way, please let us know.
<b>CSLT Website:</b> We compared the 2021 visits to our CSLT website with the 2020 visits, using Google analytics. We had 25% more visitors in 2021 than in 2020. Most new visitors came to our site by an organic search (57%) or by typing our name in directly (32%). There were few referrals (9%) and fewer that found us through social media (2%). There were more users on desktops/laptops (52%) than on mobile phones (45%)
<b>Newsletter Statistics:</b> Four newsletters were sent during February to between 511-515 subscribers. Between 231-260 people (45-51%) opened them, and 21-27% of those who opened them clicked on something for further reading. These are truly incredible readership and participation response.
<b>Morning Meditation.</b> Daily practice continues, and a Sunday morning practice has been added. The current leaders have agreed to continue the daily morning practice through June 2022. We know that those participating get good value from the practice, and we/they are open to having others join in as they feel intrigued and called.
<b>8e Covid 19</b> We make headway on beginning to have in-person services at a local theater. (We intend to have a signed contract with them soon after the March Board meeting.) They have stringent, protective protocols <u>which we will abide by</u> . As a new facility, built during the pandemic, they have the volume and quality of air handlers which will reduce risks to humans. We will be following their physical distancing protocols & masking while inside. We augment their practices with color-coded nametags (green = hugs ok, yellow = ask me first, red = no contact, please).
<b>8f Small Groups</b>
The men's group continues online, and is a closed group. Participants find it good value and wish to continue meeting after Keith Gorley's transition. A non-CSLT member has a zoom room which the men's group now uses. We will quit reporting on this group after this month, and cease to carry it in our calendar. We will miss Keith's leadership and participation in our Center, and wish him well on his continued journey.
Prosperity+ Alums meet online, 1 <sup>st</sup> and 3 <sup>rd</sup> Sundays 1-2pm in our second zoom room. New graduates invited to participate. Five people regularly attend. Good results are being achieved.
Janet Salese hosts Full Moon Labyrinth Walk as a regular activity for which we advertise and encourage participation of those interested. February's walk had no attendees. It was a cold and miserable night. Three persons attended March's walk. Janet is starting an email reminder for those who wish to participate, but keep forgetting. The schedule for 2022 is: Mar 18 - 7pm, Apr 16 - 7pm, May 15 - 8pm, Jun 14 - 8pm, Jul 13 - 8pm, Aug 11 - 8pm, Sep 10 - 8pm, Oct 9 - 7pm, Nov 8 - 7pm, Dec 7 - 7pm
Sacred Cinema -- We will discuss Part II in March <u>Samadhi Movie, 2018 - Part 2 (It's Not What You Think) - YouTube</u> and continue with Part III in April <u>Samadhi Movie, 2021- Part 3 - "The Pathless Path"</u> Five people attended in March.
Zoom potluck is on hold for now.
<b>8g Other Places We Might Advertise? – Madeline</b>
Since we are still not in-person, Madeline continues to explore possibilities for future advertising.

<b>8h. Live Streaming update</b> – The management of the theater we are in negotiations with intends to provide technical support for our livestreaming activities as part of the support they provide us. We are so very grateful. Training package from New Thought Philadelphia reviewed by interested congregants (the band, Mariann & Rev Janis). Consultation yet to be used.	
<b>8i. Directory – Janet.</b> An updated directory will be distributed in early March. How many people have joined? No new additions this month. Beginning in April the Directory will be published quarterly.	
<b>8j. CSL Member Council Meeting – (Madeline)</b> March report – Will watch replay and report.	
<b>8k. Spiritual Living Circles – Madeline.</b> Getting closer to being ready to go online.	
<b>8l. Value of small group gatherings (as long as we remain on online only)</b> – Five people attended the Watch Party on 2/6 and 2 on 2/13. Janet hosted another on 2/27 with 2 in attendance. No one joined Maria on 3/6. Next one April 3 with Maria. (Janet attending with second computer as back-up).	
<b>8m. Leadership Training Opportunities for Board Members</b> – Nothing new to report. On hold, pending us getting established at our new Sunday location.	
<b>8n. Recognition of Major Donors</b> – March 19. Maria led the set-up for the Major Donor Picnic. In the end we order 28 meals for major donors and their guests. Debrief of the event in New Business.	
<b>8o. Prospective Interim Board Members?</b> We'll have two open seats in October.	
<b>9 2021-2022 Planning Cycle</b>	
<b>9a Planning Mtg?</b> Not needed at this time	
<b>9b Board Mtgs</b> <b>Does April 28<sup>th</sup> 4pm (on zoom) work for everyone?</b>	
<b>9c Guest Speakers</b>	Ministerial student, and now licensed minister, Jeff Hargis (affiliated with New Vision Center in Phoenix) spoke February 27 <sup>th</sup> Our own Sharon Whealy is scheduled to speak on April 10. Rev Janis is gathering guest speakers for her sabbatical in May.
<b>10 New Business for This Meeting??</b>	1. Debrief of major donor picnic? (How was it? Did you receive any feedback from attendees, besides it was lovely to be in person?) Party was enjoyed by all who attended. No one got a meal and then left (Everyone was comfortable staying together under the ramada.) We saw a number of individuals who have continued to support us during the pandemic but do not feel like participating on zoom. A suggestion was made that we could rent a ramada for potlucks or social gatherings in person once we are back in person as a way to retain the hospitality function that won't be available to us at our new location. 2. Rev Janis' sabbatical was discussed. A number of her administrative duties were discussed and several board members volunteered to cover them while she was away during May. She was asked to make a task list to make sure that everyone understood what needed to be handled during her absence. The Board also decided they were more comfortable running Sunday services on zoom during May than trying to force the livestreaming to work in the next couple weeks. Everyone breathed a sigh of relief when this decision was made.
<b>Tabled Items</b>	Next steps for Consolidated Community Campus: Further discussion of this item is tabled until Center and community growth clarifies our needs.

	Small group Requirements - Further discussion of this topic tabled for now.
	Paid Administrative support in the office, deferred until building open
	Idea parked until after we return to meeting in person: Creation (or Reviving) of a CSLT Business Directory for those who wish to advertise their services to each other.
	Deferred Coffee News advertising decision, pending our return to in person meetings.
<b>11 New Business Items for Next Meeting?</b>	
Final check on preparedness for Rev Janis' sabbatical.	

**12 Sunday Gratuities**

Date	Honoree
3/20	Our major donors
3/27	Our morning meditators
4/3	B'days and significant anniversaries
4/10	Technologists + Sharon for her talk that Sunday
4/17	Easter/Spring
4/24	All the people who cover for Rev Janis so she can take sabbatical for a month
5/1	B'days and significant anniversaries

**14 CIAB Schedule** Deferred, until we figure out what is next for us, and what is needed.

**15 Newsletter Articles**

**Due Who is writing**

- 3/20 Madeline (completion of a swap)
- 3/27 Rev Janis
- 4/3 Chris
- 4/10 Maria
- 4/17 Madeline
- 4/24 Janet
- 5/1 Rev Janis

Rotation: Rev. Janis → Chris → Maria → Madeline → Janet

**16 Six Month Calendar Review** Pages 6-7

**17 Team Reports** Pages 7-8

**Current Board Liaisons:**

**Rev. J:** Sundays, Practitioner Core, Education, Admin, Ops, Altared States

**Maria:** Chair, Trustees, Hospitality, Youth Program, Hosts,

**Chris:** Vice Chair, Newcomers' Team,

**Madeline:** Secretary, Marcomm, Outreach, Video, Membership, In-person celebrations, Bookstore

**Janet:** Treasurer, Full moon Labyrinth walk, Cinema, Greeters,

**Adjourn and Pray Out 6pm**

## Six Month Calendar (Look Ahead!)

**We maybe do know where we will be returning to in-person Sunday services, and maybe when... ☺**

March 2022						
20 Prosperity+ Alums 1-2pm Movie 2:30p	21 Visioning 5-6:30 (zoom)	22	23	24 Board Mtg 4p (z)	25	26
27	28 Visioning 5-6:30 (zoom)	29	30	31	APR 1	2

April 2022						
3 Potluck? Prosperity+ Alums 1-2pm	4 Visioning 5-6:30 (zoom)	5	6	7 Vision Core 6:30p Rev J OOT	8	9
10 Sharon Whealy speaking	11	12 Rev J OOT	13	14	15	16 Full Moon Labr Walk 7pm
17 Easter Prosperity+ Alums 1-2pm Movie 2:30p	18 Visioning ends Book Share 11:30-12:30	19	20	21	22	23
24	25	26	27	28 Board Mtg 4pm CSLT Creatives (offsite) 12:30-2:30	29	30

### Rev Janis sabbatical, entire month of May

May 2022						
1 Potluck? Prosperity+ Alums 1-2pm	2	3	4 Sharon Whealy's <i>BhagavadGita</i> 6-7:30p 2 <sup>nd</sup> z	5 Vision Core 6:30pm	6	7
8	9	10	11 Sharon's <i>BhagavadGita</i> 6-7:30p 2 <sup>nd</sup> z	12	13	14
15 Prosperity+ Alums 1-2pm Movie 2:30p Full Moon Lab Walk 8pm	16	17	18 Sharon's <i>BhagavadGita</i> 6-7:30p 2 <sup>nd</sup> z	19	20	21
22	23	24	25 Sharon's <i>BhagavadGita</i> 6-7:30p 2 <sup>nd</sup> z	26 Board Mtg CSLT Creatives (offsite) 12:30-2:30	27	28
29	30	31	JUN 1	2 Vision Core 6:30pm	3	4

June 2022						
5 Potluck? Prosperity+ Alums 1-2pm	6	7	8	9	10	11
12 First Sunday at new location?	13	14 Full Moon Lab Walk 8pm	15	16	17	18

19 Pros+ Alums 1-2pm Movie 2:30p	20	21	22	23 Board Mtg CSLT Creatives (offsite) 12:30-2:30	24	25
26	27	28	29	30	<b>JUL 1</b>	2
<b>July 2022</b>						
3 Potluck? Prosperity+ Alums 1-2pm	4	5	6	7 Vision Core 6:30p	8	9
10	11	12	13 Full Moon Labr Walk 8p	14	15	16
17 Pros+ Alums 1-2pm Movie 2:30p	18	19	20	21	22	23
24	25	26	27	28 Board Mtg	29	30
31	<b>AUG 1</b>	2	3	4	5	6

**CSLT Board Minutes – March 24, 2022  
Team Reports for (mostly) February**

**ADMINISTRATION**

Submitted by Rev. Janis

All non-essential activities continue being deferred until ‘afterwards’ (whatever that means.) Mariann retains the uploading ‘stuff’ to the website, and has been gearing up for our return to in-person services. She has also taken over preparation of the weekly e-newsletter. Thank you Mariann. Our webmaster, Graeme tidies up errors we find and keeps our web presence current and looking sharp. Maria S. uploads the online calendar & blog, and keeps a lid on the spam hits. Thank you Maria. Kim, our bookkeeper, and her assistant, Lisa, continue to delight us with their competence. Janet has fully stepped into the Treasurer’s role. We are grateful. We remain online. Our equipment has been returned from The Gregory. Negotiations, and necessary preparations continue so we can begin to meet at our proposed theater location.

**ALTARED STATES** Nothing to report until we return in person.

Submitted by Rev Janis

**BOOKSTORE**

Submitted by Madeline

On hiatus until ‘sometime afterwards.’ Books and The Science of Mind magazines are available to purchase and either pick-up or mailing. Don’t forget you can choose us as your Amazon Smile charity!

**CINEMA** Reported above in current activities, in section 8f

Submitted by Janet

**COMPASSIONATE CARE**

Submitted by Rev Janis

Some meal, care and transportation services continue to be provided in very specific cases, on a case-by-case basis.

**ECCLESIASTICAL CORE**

Submitted by Rev Janis

We continued online Sunday services (through zoom). A diversity of regulars and new people keep appearing. We get better at doing it; individuals get more comfortable in the stay-home-isolation-mode of doing Sunday services. Sharon Whealy continues to support our Center online Sunday morning meditations and platform twice each month. She has also volunteered to cover 5<sup>th</sup> Sunday platform and meditation. Practitioner student Maria Schuchardt leads one Sunday Morning Meditation the 3<sup>rd</sup> Sunday each month, and also performs platform duties.



We are open to the possibility that another individual desires to lead the 1<sup>st</sup> Sunday meditation, which currently is led by Rev Janis.

Daily morning meditation practice (on zoom) continues because a group of committed volunteers, and committed attendees continue to support it.

#### **EDUCATION CORE**

Submitted by Rev Janis

Rev Janis completed a book study on Thomas Troward's *The Creative Process in the Individual* on February 7, 5:30-7pm on the Sunday morning zoom link with an average of 6 persons attending.

The certificated class using the new Visioning curriculum began on March 7 with 12 persons signed up.

Sharon Whealy RScP has agreed to host a book study on Dr Edward Viljoen's *The Bhagavad Gita: The Song of God Retold in Simplified English* on Wednesday evenings during May. Fee will be \$40. She is also going to offer it to the congregants from her previous center(s) in California.

**FACILITIES TEAM** Report is included as agenda item.

Submitted by Rev Janis

**FUNDING TEAM** Reported as agenda items in Financials

Submitted by Janet/Rev Janis

**GREETERS** Situation normal, until it wasn't.

Submitted by Janet

**HOSPITALITY TEAM** Reported in 8f

Submitted by Maria

**HOST TEAM** Hosts participate in the online Sunday services. We are grateful for their service. Submitted by Maria

**(FULL MOON) LABYRINTH WALK** Reported in current business, 8f.

Submitted by Janet

#### **MARKETING AND COMMUNICATIONS TEAM/OUTREACH**

Submitted by Madeline/Mariann

During February, no promotions were scheduled as we continue to finalize a return to in person. Research continues into potential outreach activities.

**MEMBERSHIP** Nothing to report at this time.

Submitted by Madeline

A number of members are taking advantage of the 10% discount for certificated classes.

#### **MINISTER'S TRAVEL PLANS**

Submitted by Rev Janis

No travel in February, though Rev Janis took the 4<sup>th</sup> Sunday off. Maria ran the zoom room for the February guest speaker, and uploaded the video. Thanks, Maria!

#### **MUSIC/SOUND**

Submitted by Rev Janis

Our CSLT Orchestra continues to impress with the way they make magic behind the scenes for our Sunday performance music, and with the quality of music they provide. We are so grateful for our music team.

During February, our opening congregational song was the Floyd/Lula favorite "In the name of Love". During March we plan to use Gary Lynn Floyd's "One Big Family".

The music team continues to contemplate how to do live music in our proposed location.

**NEWCOMERS TEAM** Situation normal, until it wasn't.

Submitted by Chris

**PRACTITIONER CORE** Nothing additional from Ecclesiastical report at this time.

Submitted by Rev Janis

**YOUTH & FAMILY** No activity until it is safe to have it.

Submitted by Maria

#### **VIDEOGRAPHY AND PHOTOGRAPHY**

Submitted by Madeline/Mariann Moery - Team Leader

The plan remains that when in-person returns we will retain online access for those who do not wish face-to-face and for those who attend from outside Tucson. As we close in on returning to in-person, a schedule will be created for individuals to be trained to operate our video/audio equipment. Until we meet in person, we will continue with



our current Zoom service posting links on our website and our Facebook page to the YouTube recordings of Rev. Janis' reminder and prayer.

**VISION CORE**

Submitted by Rev Janis

Vision Core Notes, begun March 3, 2022, 6:30pm

In person (zoom) participation: Chris Wheeler, Marya Wheeler and Rev Janis Farmer

Additional virtual participants: Carol Nigut

What is the highest vision, highest ideal for CSL Tucson?

Compassion, connection, creativity, love and inclusion; Joy, enthusiasm, Love, celebration, gathering, fireworks; The Great Plains (Midwest US), huge fluffy clouds, Beauty & the Beast chair, but it was animate (alive); Holding the highest consciousness for ourselves, our community, and the world. God Consciousness is needed more than ever.

What changes, evolves, becomes as this vision comes to pass?

Immense rapid expansion of a galaxy in space on a flat plane, like a shock wave; Big Ben, grain silos in the Midwest US; Beauty and the beast rose under glass; Keeping hearts open and continued disciplined practiced as well as gratitude. Focus, focus, focus...

Is there anything else that wants to be known, realized or understood?

Music at the ramada; Perfect timing and order, fireworks; Candy corn and corn pops; We are being called to rise up, recognize and celebrate the oneness of God emerging in response to Ukraine. Darkness cannot keep out the light and we need to see and remember that.

**Center for Spiritual Living Tucson**  
Board Minutes & Reports from February  
**March 24, 2022**

**7 Finance/Stewardship Report**

**Treasurer, Janet**

Executive Summary: February was a 4-Sunday month, again entirely online. Average attendance 31. The Board continues to vision for a growing Center. Contributions were about normal for recent months, and down from what we estimate will be required when we return to in-person services.

The Board has agreed to sustain and hold the vision of increased attendance by individuals willing and able to participate (in all ways and on many levels), which allows us opportunities to expand our reach in Tucson.

	Total Sunday Offerings and P+	New Designated Monies*	Total Income	Total Expenses	Net Income	\$ per Weekly Attendee	Average Weekly Attendance
February	\$7,152	0	\$7,397	\$8,764	<\$1,367>	\$58.15	31+
January	\$8,082	0	\$8,581	\$8,662	<\$ 81>	\$47.82	34+
December	\$34,190	\$2,000	\$35,511	\$19,723	\$15,788	\$265.04	32+
November	\$9,658	\$7,000	\$9,960	\$10,613	<\$ 653>	\$75.45	32+

\*Presently we have a stand-alone Facility Fund, Scholarship Fund, a Practitioner Fund, an Opportunity Fund (incl. piano fund) and a Compassionate Heart fund. All are designated and are kept separated from Total Income or Total Expenses.

Cash Balances	February	January	December	November
Chase General Ops Checking	\$15,238	\$15,238	\$15,038	\$14,992
Vantage W. Gen Ops Checking	\$59,316	\$64,304	\$71,811	\$48,674
Vantage W. Additional Savings	\$10,006	\$10,006	\$10,005	\$10,005
Vantage W. Education Savings	\$12,269	\$12,231	\$11,881	\$12,039
VWCU Practitioners' Savings	\$412	\$412	\$412	\$412
<b>SubTotal</b>	<b>\$97,241</b>	<b>\$102,191</b>	<b>\$109,147</b>	<b>\$86,122</b>

Chase Facility Fund Savings	\$71,050		\$71,049	\$71,048	\$71,048
Vantage W. Facility Fund Savings	\$4,748		\$4,748	\$4,748	\$4,747
VWCU Imprmnt/Opportunity Fund*	\$18,314		\$18,313	\$18,293	\$16,287
Facility Fund Invest Acct /Endowment	\$26,241		\$26,241	\$24,079	\$24,079
<b>Total</b>	<b>\$217,594</b>		<b>\$222,542</b>	<b>\$227,315</b>	<b>\$202,283</b>

\* We received anonymous designated gifts, part of which is to be used for 'sustainable' marketing activities. We called this the Opportunity Fund. Out of this account we have funded the website upgrade & partially funded of our Office improvement fund. We have also used this fund to test out other advertising opportunities and will use it for buying video equipment that will allow us to live-stream, when we return to in person services. (Bought video-equipment in August-September.)

α The Gregory School has declined to accept our rental payments since May 2020 because the school remains closed to renters, and they have terminated our lease, as of December 2021. We search for a new Sunday meeting location.

⌘ We received our first quarterly report on our investment in the SOM Foundation Endowment. The 3<sup>rd</sup> quarter was a difficult one for the markets and the investment managers worked diligently to minimize losses. We expect the 4<sup>th</sup> quarter and the year-end performance in late January or February to be much improved, and it was. ☆

### Comparison between February 2021 and February 2022

Attendance/Sunday	DEcreased by	14
Offerings/month	DEcreased by	\$ 2,199
Offerings/person/Sunday	INcreased by	\$ 6.49
Total Income	DEcreased by	\$ 2,859
Expenses	DEcreased by	\$ 72
Net Income	DEcreased by	\$ 2,931

Online only since March 2020, attendance estimated. As of the end of March we have been online for 60+ weeks for Sunday Services, classes, Mastermind groups, book studies, Vision Core and monthly Board of Trustees meetings.

### Status of the CSLT Facility Fund

Facility Fund Investment Acct Deposits: Initial Deposit \$50,000 (Nov12), Deposit \$10,236 (Mar13) Deposit \$15,188 (Dec13)

Investment Account closed December 2016 to purchase raw land at 4961 E. 22nd St. On June 3, 2019 we sold our raw land on 22nd St, and have agreed to serve as 'bank' for the buyer for five years with annual payments, on June 3 of each year.

Date	CSLT Contributions	Various Projects & Interest	Personal Donations	\$ Total
Year End 2009				29,365
Year End 2010				48,710
Year End 2011				70,361
Year End 2012	6,800	1,045	1,430	79,636
Matching Fund Reserves			2,900	82,536
Year End 2013 (Inspection)	<1,800>	4,780	3,327	88,843
Year End 2014	<600>	1,789	25,884	115,936
Year End 2015 (Moved to River Rd)	<5,223>	<1,786>	7,109	116,027
Year End 2016 (Purchased land)	<102,024>	2,068	2,440	18,511
Year End 2017 (InvAcctClosed.)		164	1,500	20,175
Year End 2018		112	1,000	21,287
Year End 2019 (sold land & bought office)	(net) <17,146>Ⓜ		200	4,341
Year End 2020		47,479 ☺ +3	25	53,288
Year End 2021		46,587 ☺ ⌘		99,875
January		2,163 ☆		102,038
February 2022		1		102,039

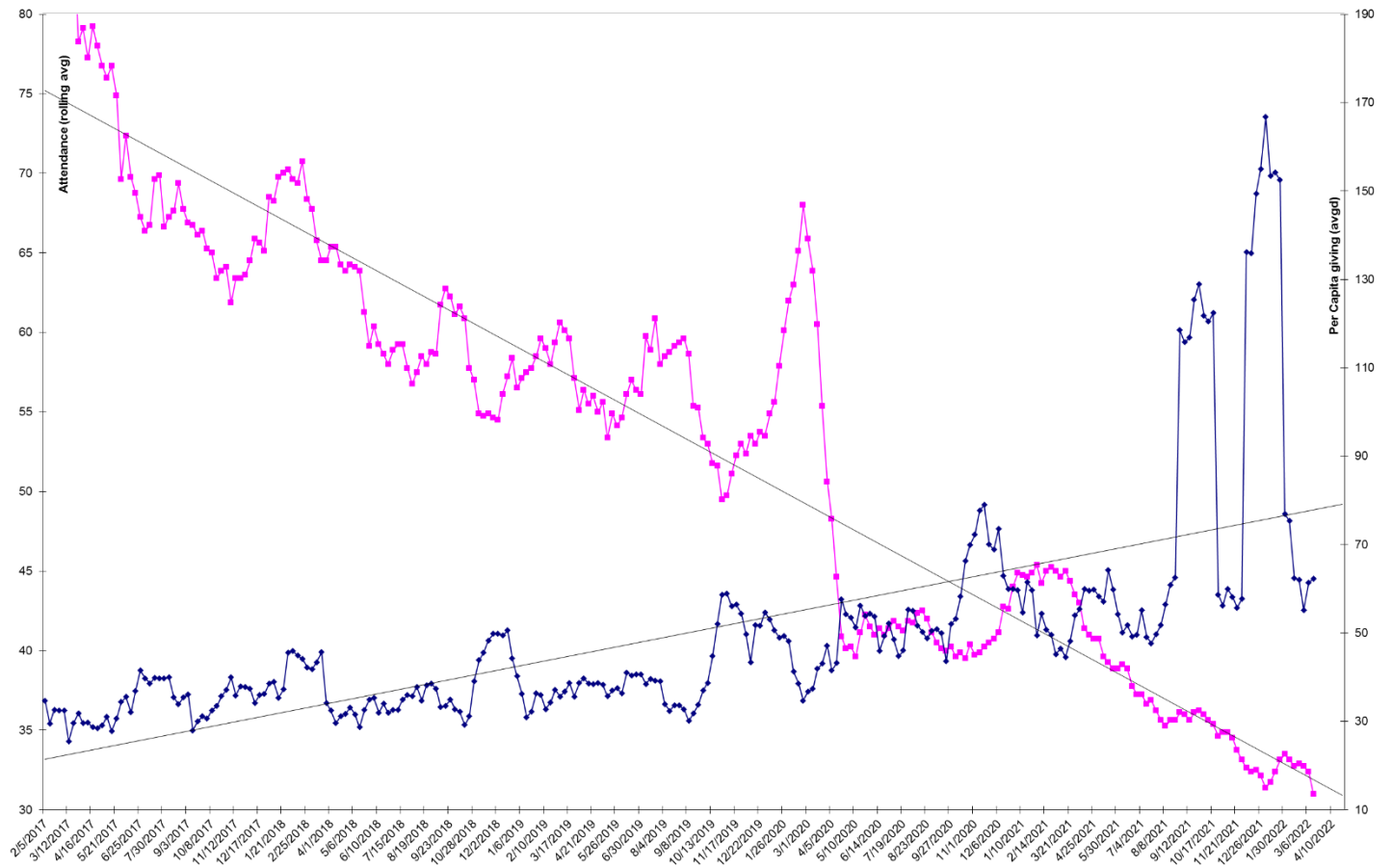
Ⓜ Facility Fund expenses to relocate to our Education Center have been completed (for now). In total we spent \$59,330.32 for the down payment and the repairs required to meet the requirements of our mortgage holder. A detailed breakdown of expenditures was presented in the January 16<sup>th</sup> Board minutes. We paid \$1,440 of capital expenses from General Operations during the move.

☺ The annual payment on the sale of the 22<sup>nd</sup> St property initiated in 2019.

⌘ We received our first quarterly report on our investment in the SOM Foundation Endowment, discussed in Cash Balances above.

☆We received our 2nd quarterly report on our investment in the SOM Foundation Endowment, discussed in Cash Balances above.

### Attendance and Per-Person Giving Over Time



### Budget and Actual Expenditures for February 2022, and Year-to-Date

	Jan 2022		Feb 2022		Total	
	Actual	Budget	Actual	Budget	Actual	Budget
<b>Income</b>						
<b>40100 Contributions</b>						
40101 Sunday Offerings	4,604	9,500	3,863	8,000	8,467	17,500
40110 Online Contri	3,478	2,000	3,289	2,000	6,767	4,000
<b>Total 40100 Contributions</b>	<b>8,082</b>	<b>11,500</b>	<b>7,152</b>	<b>10,000</b>	<b>15,235</b>	<b>21,500</b>
<b>Total Income</b>	<b>8,105</b>	<b>11,540</b>	<b>7,157</b>	<b>10,040</b>	<b>15,261</b>	<b>21,580</b>
<b>Expenses</b>						
<b>Total 00 ADMINISTRATION</b>	<b>3,158</b>	<b>5,156</b>	<b>3,235</b>	<b>5,086</b>	<b>6,393</b>	<b>10,242</b>
<b>Total 02 MINISTER COMPENSATION</b>	<b>2,070</b>	<b>2,070</b>	<b>2,070</b>	<b>2,070</b>	<b>4,140</b>	<b>4,140</b>
<b>Total 03 MUSIC EXPENSE</b>	<b>1,850</b>	<b>1,967</b>	<b>1,700</b>	<b>1,917</b>	<b>3,550</b>	<b>3,884</b>
<b>Total 04 MINISTRY EXPENSE</b>	<b>0</b>	<b>40</b>	<b>25</b>	<b>1,090</b>	<b>25</b>	<b>1,130</b>
<b>Total 05 SUNDAY SERVICE EXP</b>	<b>200</b>	<b>885</b>	<b>400</b>	<b>970</b>	<b>600</b>	<b>1,855</b>
<b>Total 06 TITHING / CHARITABLE GIVING</b>	<b>1,212</b>	<b>1,725</b>	<b>1,073</b>	<b>1,500</b>	<b>2,285</b>	<b>3,225</b>
<b>Total 07 LEADERSHIP DEVELOPMENT EXP</b>	<b>0</b>	<b>1,500</b>	<b>0</b>	<b>0</b>	<b>0</b>	<b>1,500</b>
<b>Total Expenses</b>	<b>8,491</b>	<b>13,343</b>	<b>8,503</b>	<b>12,633</b>	<b>16,994</b>	<b>25,976</b>
<b>Net Operating Income</b>	<b>-386</b>	<b>-1,803</b>	<b>-1,346</b>	<b>-2,593</b>	<b>-1,732</b>	<b>-4,396</b>
<b>Total 81000 EDUCATION REV</b>	<b>400</b>	<b>360</b>	<b>-13</b>	<b>360</b>	<b>387</b>	<b>720</b>
<b>Total 85000 Bookstore Revenue</b>	<b>-20</b>	<b>50</b>	<b>-8</b>	<b>50</b>	<b>-27</b>	<b>100</b>
<b>86000 FACILITY FUND REVENUE</b>						
86010 Facility Fund Income	0	0	0	0	0	0
<b>Total 86000 FACILITY FUND REVENUE</b>	<b>0</b>	<b>0</b>	<b>0</b>	<b>0</b>	<b>0</b>	<b>0</b>
<b>87000 Investments</b>						
87100 Investment Increase			3,167		3,167	0
87200 Investment Reduction			-1,005		-1,005	0
<b>Total 87000 Investments</b>	<b>0</b>	<b>0</b>	<b>2,162</b>	<b>0</b>	<b>2,162</b>	<b>0</b>
<b>Net Other Income</b>	<b>380</b>	<b>420</b>	<b>2,141</b>	<b>425</b>	<b>2,522</b>	<b>845</b>
<b>Net Income</b>	<b>-6</b>	<b>-1,383</b>	<b>795</b>	<b>-2,168</b>	<b>789</b>	<b>-3,551</b>
<b>less designated</b>			<b>-2,162</b>		<b>-2,162</b>	
	<b>-6</b>		<b>-1,367</b>		<b>-1,373</b>	

Thursday, Mar 10, 2022 09:16:37 AM GMT-8 - Accrual Basis