



Board of Trustees
Minutes from
February 24 Meeting, 4pm (zoom)

1	Call to Order and Evocation	Pg 2	Maria/Rev Janis	5 min
2	Visioning		Rev Janis	15 min
3	Checking In		All	5 min
4	Last Month's Minutes		Done	0 min
5	Call to Audience		Maria	1 min
6	Finance/Stewardship Report	Pgs 9-12	Janet	10 min
	Discussion of current fiscal status			
7	Review Current Business Items	Pg 2		
	911 S. Craycroft (office) update		Rev Janis	1 min
8a-p	Review Current Activities	Pgs 2-4	All	15 min
	(incl. questions raised or deferred at last Board meeting)			
9	The 2020-2021 Planning Cycle	Pg 4		
	Planning Meeting Needed?		All	2 min
	Next Board meeting (?)		All	2 min
	Upcoming Guest Speakers		Rev Janis	1 min
10	New Business for This Meeting?	Pg 4	All	10 min
11	New Business for Next/Future Meeting?	Pg 5	All	2 min
12	Sunday's Gratitudes	Pg 5	All	5 min
13	Review CIAB Schedule	On hiatus	All	0 min
14	Lead Newsletter Articles	Pg 5	All	1 min
15	Six Month Look Ahead on Calendar	Pgs 5-7	All	5 min
16	Team Reports	Pgs 7-9	All	2 min
	Adjourn and Pray out		Rev. Janis	

Present: Maria Schuchardt, Chris Wheeler, Madeline Pallanes, Janet Salese, Rev Janis Farmer

Absent: none

In Service: Maria Schuchardt (Running the meeting), Rev Janis Farmer (Scribe, high watch, visioning)

Guests: none

Center for Spiritual Living Tucson
Board Minutes from February 24, 2022 Meeting

1 Call to Order/Evocation 4pm

Maria/Rev Janis

2 Visioning

Q: What is the Highest Vision or Highest Ideal for Center for Spiritual Living Tucson?

A: Big top tent with pennant flag flying; Green grass, warm sunny days; Grove of trees in full bloom; Love, people gathering around, connecting, communicating, laughing; Radiating peace, order & joy.

Q: What changes, evolves, or becomes (adapts & modifies) as this highest vision comes into existence?

A: Rotation or change of people; People moving away; Dirt road, old truck approaches, and moves away, kicking up dust; Clouds, clearing... light; Anxiety and worry decrease, baby ducks swimming in a row on a pond.

Q: Is there anything else that wants to be known, understood, or realized? What else?

A: Feeling of wildlife, specifically a bobcat; White horizontal line; The order of the Universe, Love drives the bus.

3 Checking In (briefly, please)		All
4 Last Month's Minutes		Done
5 Call to Audience no audience		Maria
6 Financial/Stewardship Report		Janet
6a Current Financial Reporting	Report attached, pages 9-12	
7 Current Business Items		Rev Janis
<p>7a 911 S Craycroft facilities update. Have contacted gardeners to tidy weeds around the office. Credit card machine updated to 4G (5G not yet available), old credit card terminal was 3G. Migrating office email to Microsoft Exchange because GoDaddy said we must.</p>		
8 Review of Current Activities		
8a Education	Classes continue. More planned. Full report, below.	Rev Janis
8b Youth	Nothing to report. Soliciting guidance from Home Office on how to gather youth at this time and what safety precautions are advised.	Maria
8c Board Liaisons	Were you successful in contacting any of your team leaders or team members (that you haven't heard from or seen in the last 6 months)? Yes, some.	All
8d Community & Growth		
<p>2021 Credo: CSLT inspires spiritual expression in community with all and offers an accepting, loving, and peaceful way of living a joyful, healthier, and more abundant life. (We kept the 2020 Credo.)</p>		
<p>CSLT Community Presence: The recordings of our online Service continue to be viewed on YouTube. During January there were 114 views for 9.5 hours (normal-ish) and 98 total subscribers (increase of 7). As of Saturday, February 26, we have 104 subscribers which has allowed us to have a more readily findable, and prettier, YouTube channel. Thanks to everyone who has subscribed!! The two videos most watched were normal services on January 23rd and February 6th. Instagram: We have 77 Instagram followers (10 new ones). Mariann (Moery) is figuring out how to do useful, fun and informative Instagram uploads with the least amount of angst and hassle. If posting on Instagram is fun for you, and you want to participate this way, please let us know.</p>		
<p>Newsletter Statistics: Four newsletters were sent during January to between 512-513 subscribers. Between 247-268 people (49-52%) opened them, and 18-23% of those who opened them clicked on something for further reading. These are truly incredible readership and participation response.</p>		

Morning Meditation. Daily practice continues, and a Sunday morning practice has been added. The current leaders have agreed to continue the daily morning practice through March 2022. We know that those participating get good value from the practice, and we/they are open to having others join in as they feel intrigued and called.

8e Covid 19 We make headway on beginning to have in-person services at a local theater. (We are in contract discussions with them.) They have stringent, protective protocols which we will abide by. As a new facility, built during the pandemic, they have the volume and quality of air handlers which will reduce risks to humans. We will be following their physical distancing protocols & masking while inside. We augment their practices with color-coded nametags (green = hugs ok, yellow = ask me first, red = no contact).

8f Small Groups

The men's group has met online, and sometimes in person, on 1st & 3rd Thursdays for quite some time, with 6-8 attending. We are uncertain of the status of the men's group presently.

Prosperity+ Alums, with 4-5 attending meets online, 1st and 3rd Sundays 1-2pm in our second zoom room. New graduates invited to participate. Prosperity+ Alums skipped meeting on 2/20 as regulars were attending to other matters. Will resume on 3/6.

The Wednesday Eric Butterworth's *Practical Metaphysics* class is deferred indefinitely.

Janet Salese hosts Full Moon Labyrinth Walk as a regular activity for which we advertise and encourage participation of those interested.

January's walk had 3 attendees. February's walk had no attendees. It was a cold and miserable night.

The schedule for 2022 is: Feb 16 - 7pm, Mar 18 - 7pm, Apr 16 - 7pm, May 15 - 8pm, Jun 14 - 8pm, Jul 13 - 8pm, Aug 11 - 8pm, Sep 10 - 8pm, Oct 9 - 7pm, Nov 8 - 7pm, Dec 7 - 7pm

Sacred Cinema Zoom room was opened by Maddy and discussion lead by Marsha. We will continue watching *Samhadi*.

We will discuss Part II in March [Samadhi Movie, 2018 - Part 2 \(It's Not What You Think\) - YouTube](#) and continue with Part III in April [Samadhi Movie, 2021- Part 3 - "The Pathless Path" - YouTube](#).

Zoom potluck is on hold for now.

8g Other Places We Might Advertise? – Madeline Nothing at this time.

8h. Live Streaming update – The management of the theater we are in negotiations with intends to provide technical support for our livestreaming activities as part of the support they provide us. We are so very grateful. Discussions continue with them to move this process forward.

Training package from New Thought Philadelphia reviewed by interested congregants (the band, Mariann & Rev Janis). Consultation yet to be used.

We will be hosting in-person training with four members of our extended leadership team and the identified person(s) from the theater company, both to understand the operations of the equipment, and how to use it in this new space.

8i. Directory – Janet. 27 people in the directory now. An updated directory will be distributed in early March.

8j. CSL Member Council Meeting – (Madeline)

January's report – There was no member council meeting due to the CSL convention.

February's report - Zoom call was led by Edward Viljoen & David Alexander. 70 participants.

A few new counsel leaders (that were elected in the recent election) were on the call. They were introduced and spoke a little bit about their positions.

Closing for the purchase of Cedar Camp Ridge in Oregon will be sometime in March. CSL is purchasing the camp for 3 million. Over 1 million has been raised and is being used as the down payment. 1.5 million is being financed through a credit union. The current owner agreed to carry back a \$500,000 mortgage for 5

<p>years. This camp is a running functioning profitable business that has been in business since the 60's and will continue to run as such. It occupies 32 acres and accommodates 225 for indoor sleeping. The name will remain the same. Dr. Kasey Wilson (Camp director), along with 2 other full-time staff (maintenance and food service) has been hired to run the camp for CSL. CSL will also hire summer staff.</p>	
<p>8k. Spiritual Living Circles – Madeline. Discussing with co-leader.</p>	
<p>8l. Value of small group gatherings (as long as we remain on online only) – Five people attended the Watch Party on 2/6 and 2 on 2/13. Janet will host another on 2/27 and Maria will host on 3/6.</p>	
<p>8m. Leadership Training Opportunities for Board Members – Nothing new to report. On hold, pending us getting established at our new Sunday location.</p>	
<p>8n. Recognition of Major Donors – March 19. Maria: Ramadas are available at Reid park and Ft Lowell Park. Discussion: Ft Lowell park is smaller, close to our old Sunday meeting location, and easier for the caterers, so we reserved a ramada there. Maddy shared the menu choices, etc from the Tasteful Kitchen. The board selected two options which we will offer to the major donors in a 'Thank You/Invitation letter' in early February. We'll need responses by the end of February so the Tasteful Kitchen can acquire foodstuffs and prepare the meals. Maddy will contact Tasteful Kitchen with final numbers on, or shortly after, February 28th. Chris will bring canned music and a way to play it at the ramada. 'Office' (Rev Janis and Janet) will make name placards so attendees won't have to remember what they ordered. Preparation for the day of the party: Maria will gather a CSLT banner, sandwichboard sign, tablecloths & flowers, trashbags, a cooler with ice and load it with individual bottled waters & cans of LaCroix. Board members who are available to help set up will arrive at 11:30 for the party which starts at noon.</p>	
<p>8o. New Sunday Venue – Continuing to work contracts, licensing, safe storage, training for new location. Further details, like expanded music licenses, and training the videographer(s) on our equipment also need to be worked. We have a meeting with our livestreaming specialists on Friday, 2/25 to talk about sound equipment we need to acquire that we don't already have.</p>	
<p>8p. Prospective Interim Board Members? We'll have two open seats in October. No one presently on the board is completing their term.</p>	
<p>9 2021-2022 Planning Cycle</p>	
<p>9a Planning Mtg? Not needed at this time</p>	
<p>9b Board Mtgs Does March 24th 4pm (on zoom) work for everyone? yes</p>	
<p>9c Guest Speakers</p>	<p>Ministerial student, and soon to be licensed minister, Jeff Hargis (affiliated with New Vision Center in Phoenix) will speak February 27th. He is comfortable with speaking on zoom. Maria to handle running the zoom room, the gratitudes, and the recording. Thanks Maria. Our own Sharon Whealy is scheduled to speak on April 10. Rev Janis intends to actually take off her planned 6 Sundays off in 2022, which means others will get to step up and orchestrate the Sunday morning services, whether we are in person or remain on zoom.</p>
<p>10 New Business for This Meeting??</p>	<p>None identified</p>
<p>Tabled Items</p>	<p>Next steps for Consolidated Community Campus: Further discussion of this item is tabled until Center and community growth clarifies our needs.</p>
	<p>Small group Requirements - Further discussion of this topic tabled for now.</p>
	<p>Paid Administrative support in the office, deferred until building open</p>

	Idea parked until after we return to meeting in person: Creation (or Reviving) of a CSLT Business Directory for those who wish to advertise their services to each other.
	Deferred Coffee News advertising decision, pending our return to in person meetings.
11 New Business Items for Next Meeting? Debrief of donor recognition picnic.	

12 Sunday Gratuities

Date	Honoree
2/20	Political and community leaders Those willing to step up and lead.
2/27	Our guest speaker, Jeff Hargis, whose ministerial license becomes active the next day.
3/6	B'days and significant anniversaries
3/13	Team Leaders who have helped CSLT continue to operate and are gearing up for in-person
3/20	Our major donors
3/27	Our morning meditators

14 CIAB Schedule Deferred, until we figure out what is next for us, and what is needed.

15 Newsletter Articles

Due Who is writing

- 2/20 Chris
- 2/27 Maria
- 3/6 Madeline
- 3/13 Janet
- 3/20 Rev Janis
- 3/27 Chris

Rotation: Rev. Janis → Chris → Maria → Madeline → Janet

16 Six Month Calendar Review Pages 6-7

17 Team Reports Pages 7-8

Current Board Liaisonships:

Rev. J: Sundays, Practitioner Core, Education, Admin, Ops, Altared States

Maria: Chair, Trustees, Hospitality, Youth Program, Hosts,

Chris: Vice Chair, Newcomers' Team,

Madeline: Secretary, Marcomm, Outreach, Video, Membership, In-person celebrations, Bookstore

Janet: Treasurer, Full moon Labyrinth walk, Cinema, Greeters,

Adjourn and Pray Out 5:20pm

Six Month Calendar (Look Ahead!)

We maybe do know where we will be returning to in-person Sunday services, and maybe when... ☺						
February 2022						
20 Prosperity+ Alums 1-2pm Movie 2:30p	21	22	23	24 Board Mtg (z)	25	26
March 2022						
27 Jeff Hargis speaking, Rev J OOT	28	MAR 1	2	3 Men's Gp 9a? Vision Core 6:30pm	4	5

6 Potluck? Prosperity+ Alums 1-2pm	7 Visioning starts 5-6:30 (zoom)	8	9	10	11	12
13	14 Visioning 5-6:30 (zoom)	15	16	17 Men's Group 9?	18 Full Moon Labyr. Walk 7pm	19 Major Donor Social
20 Prosperity+ Alums 1-2pm Movie 2:30p	21 Visioning 5-6:30 (zoom)	22	23	24 Board Mtg 4p (z)	25	26
27	28 Visioning 5-6:30 (zoom)	29	30	31	APR 1	2

April 2022

3 Potluck? Prosperity+ Alums 1-2pm	4 Visioning 5- 6:30 (zoom)	5	6	7 Men's Gp 9a? Vision Core 6:30p Rev J OOT	8	9
10 Sharon Whealy speaking	11 Visioning ends ?	12 Rev J OOT	13	14	15	16 Full Moon Labr Walk 7pm
17 Easter Prosperity+ Alums 1-2pm Movie 2:30p	18	19	20	21 Men's Group 9?	22	23
24	25	26	27	28 Board Mtg	29	30

May 2022

1 Potluck? Prosperity+ Alums 1-2pm	2	3	4 Sharon Whealy's <i>BhagavadGita</i> 6-7:30p 2 nd z	5 Men's Gp 9a? Vision Core 6:30pm	6	7
8	9	10	11 Sharon's <i>BhagavadGita</i> 6-7:30p 2 nd z	12	13	14
15 Prosperity+ Alums 1-2pm Movie 2:30p Full Moon Lab Walk 8pm	16	17	18 Sharon's <i>BhagavadGita</i> 6-7:30p 2 nd z	19 Men's Group 9?	20	21
22	23	24	25 Sharon's <i>BhagavadGita</i> 6-7:30p 2 nd z	26 Board Mtg	27	28
29	30	31	JUN 1	2 Men's Gp 9a? Vision Core 6:30pm	3	4

June 2022

5 Potluck? Prosperity+ Alums 1-2pm	6	7	8	9	10	11
12	13	14 Full Moon Lab Walk 8pm	15	16 Men's Group 9?	17	18

19 Pros+ Alums 1-2pm Movie 2:30p	20	21	22	23 Board Mtg	24	25
26	27	28	29	30	JUL 1	2
July 2022						
3 Potluck? Prosperity+ Alums 1-2pm	4	5	6	7 Vision Core 6:30p Men's Group 9a	8	9
10	11	12	13 Full Moon Labr Walk 8p	14	15	16
17 Pros+ Alums 1-2pm Movie 2:30p	18	19	20	21 Men's Group 9	22	23
24	25	26	27	28 Board Mtg	29	30
31	AUG 1	2	3	4	5	6

**CSLT Board Minutes – February 24, 2022
Team Reports for (mostly) January**

ADMINISTRATION

Submitted by Rev. Janis

All non-essential activities continue being deferred until ‘afterwards’ (whatever that means.) Mariann retains the uploading ‘stuff’ to the website, and has been gearing up for our return to in-person services. Thank you Mariann. Our webmaster, Graeme tidies up errors we find and keeps our web presence current and looking sharp. Maria S. uploads the online calendar & blog, and keeps a lid on the spam hits. Thank you Maria. Kim, our bookkeeper, and her assistant, Lisa, continue to delight us with their competence. Janet has fully stepped into the Treasurer’s role. We are grateful. We remain online. We look forward to the return of our equipment from The Gregory, and the negotiations, and necessary preparations being complete so we can begin to meet at our proposed theater location.

ALTARED STATES Nothing to report until we return in person.

Submitted by Rev Janis

BOOKSTORE

Submitted by Madeline

On hiatus until ‘sometime afterwards.’ Books and The Science of Mind magazines are available to purchase and either pick-up or mailing. Don’t forget you can choose us as your Amazon Smile charity!

CINEMA Reported above in current activities, in section 8f

Submitted by Janet

COMPASSIONATE CARE

Submitted by Rev Janis

Some meal, care and transportation services continue to be provided in very specific cases, on a case-by-case basis.

ECCLESIASTICAL CORE

Submitted by Rev Janis

We continued online Sunday services (through zoom). A diversity of regulars and new people keep appearing. We get better at doing it; individuals get more comfortable in the stay-home-isolation-mode of doing Sunday services. Sharon Whealy continues to support our Center online Sunday morning meditations and platform twice each month. She has also volunteered to cover 5th Sunday platform and meditation. Practitioner student Maria Schuchardt leads one Sunday Morning Meditation the 3rd Sunday each month, and also performs platform duties. We are open to the possibility that another individual desires to lead the 1st Sunday meditation, which currently is led by Rev Janis.

Daily morning meditation practice (on zoom) continues because a group of committed volunteers, and committed attendees continue to support it.

EDUCATION CORE

Submitted by Rev Janis

In January, we explored a new-to-us curriculum created by Dr Edward Viljoen, *The Science of Mind Simplified*. Book available on kindle (only) for \$0.99, curriculum will be provided to prospective attendees. Rev Janis also began a book study on Thomas Troward's *The Creative Process in the Individual* on January 10, 5:30-7pm on the Sunday morning zoom link.

Keith Gorley's book study in mid-February on Eric Butterworth's *Practical Metaphysics* is deferred for now.

Rev Janis is currently taking the newly revised and shortened Visioning curriculum and intends to offer it to the CSLT community beginning in March, assuming we have at least 6 persons signed up for it.

Sharon Whealy RScP has agreed to host a book study on Dr Edward Viljoen's *The Bhagavad Gita: The Song of God Retold in Simplified English* on Wednesday evenings during May. Fee will be \$40. She is also going to offer it to the congregants from her previous center(s) in California.

FACILITIES TEAM Report is included as agenda item.

Submitted by Rev Janis

FUNDING TEAM Reported as agenda items in Financials

Submitted by Janet/Rev Janis

GREETERS Situation normal, until it wasn't.

Submitted by Janet

HOSPITALITY TEAM Reported in 8f

Submitted by Maria

HOST TEAM Hosts participate in the online Sunday services. We are grateful for their service. Submitted by Maria

(FULL MOON) LABYRINTH WALK Reported in current business, 8f.

Submitted by Janet

MARKETING AND COMMUNICATIONS TEAM/OUTREACH

Submitted by Madeline/Mariann

During January we updated the website, received the google analytics for the past year, and prepared copy for the website, newsletter, Natural Awakenings magazine, and Facebook page on our February guest speaker. Research continues into potential outreach activities.

MEMBERSHIP Nothing to report at this time.

Submitted by Madeline

MINISTER'S TRAVEL PLANS

Submitted by Rev Janis

No travel in January. Rev Janis was/will be present for the guest speakers and guest musical artists, as she generally runs the 1° zoom account. Zoom training continues so that others can run primary zoom account and she can take classes, or take a weekend (or a few days) off. Lots of zooming. She does intend to actually take off her six Sundays in 2022, whether we are in person, or remain on zoom. Others will have the opportunity to ensure the Sunday Services run smoothly. Maria is preparing to run the zoom room for the February guest speaker, and upload the video. Thanks, Maria!

MUSIC/SOUND

Submitted by Rev Janis

Our CSLT Orchestra continues to impress with the way they make magic behind the scenes for our Sunday performance music, and with the quality of music they provide. We are so grateful for our music team.

During January, our opening congregational song was Sue Riley's "I am the Thinker" as our opening congregational song. During February, we'll plan to use the Floyd/Lula favorite "In the name of Love".

The music team continues to contemplate how to do live music in our proposed location.

NEWCOMERS TEAM Situation normal, until it wasn't.

Submitted by Chris

PRACTITIONER CORE Nothing additional from Ecclesiastical report at this time.

Submitted by Rev Janis

YOUTH & FAMILY No activity until it is safe to have it.

Submitted by Maria

VIDEOGRAPHY AND PHOTOGRAPHY

Submitted by Madeline/Mariann Moery - Team Leader

The plan remains that when in-person returns we will retain online access for those who do not wish face-to-face and for those who attend from outside Tucson. Until we meet in person, we will continue with our current Zoom service posting links on our website and our Facebook page to the YouTube recordings of Rev. Janis’ reminder and prayer.

VISION CORE

Submitted by Rev Janis

Vision Core Notes, begun February 3, 2022, 6:30pm

On zoom: Chris Wheeler, Marya Wheeler, Rev Janis Farmer

Participating Independently: Barbara McGill,

What is the highest vision, highest ideal for Center for Spiritual Living Tucson?

Red bouncy balls bouncing, deep sharing in conversation; Big sliding (pleasant looking) barn doors (inside a space); Great big ornate stone church with tall spires and stained glass (looked like NYC or Boston or some place in Europe), hand holding a bouquet of daisies; Science of Mind toolbox allows me to be quiet and contemplate Reality.

What changes, evolves, or becomes as this vision comes to pass?

A padlock opens with a key, rainbows, choirs of angels singing; Steam locomotive approaching, birds; Former CSLT team members returning to in-person services; Surrender, doubt, being peaceful. Allow room for acceptance.

Is there anything else that wants to be known, realized or understood?

Stonehenge at solstice, the opening lines to the Beatles song, “All you need is love”; Floating in the stratosphere with the ice crystals; Smears of creamy peanut butter on Wonder Bread in a home kitchen; Live as love; Acceptance. Knowing we are always in the midst of change.

Center for Spiritual Living Tucson
Board Minutes & Reports for January
February 24, 2022

7 Finance/Stewardship Report

Treasurer, Janet

Executive Summary: January was a 5-Sunday month, again entirely online. Average attendance 34. The Board continues to vision for a growing Center. Contributions were about normal for recent months, and down from what we estimate will be required when we return to in-person services.

The Board has agreed to sustain and hold the vision of increased attendance by individuals willing and able to participate (in all ways and on many levels), which allows us opportunities to expand our reach in Tucson.

	Total Sunday Offerings and P+	New Designated Monies*	Total Income	Total Expenses	Net Income	\$ per Weekly Attendee	Average Weekly Attendance
January	\$8,082	0	\$8,581	\$8,662	<\$ 81>	\$47.82	34+
December	\$34,190	\$2,000	\$35,511	\$19,723	\$15,788	\$265.04	32+
November	\$9,658	\$7,000	\$9,960	\$10,613	<\$ 653>	\$75.45	32+
October	\$6,838	0	\$7,401	\$8,778	<\$1,377>	\$39.76	34+

*Presently we have a stand-alone Facility Fund, Scholarship Fund, a Practitioner Fund, an Opportunity Fund (incl. piano fund) and a Compassionate Heart fund. All are designated and are kept separated from Total Income or Total Expenses.

Cash Balances	January	December	November	October
Chase General Ops Checking	\$15,238	\$15,038	\$14,992	\$14,992
Vantage W. Gen Ops Checking	\$64,304	\$71,811	\$48,674	\$47,712
Vantage W. Additional Savings	\$10,006	\$10,005	\$10,005	\$10,005

Vantage W. Education Savings	\$12,231	\$11,881	\$12,039	\$12,621
VWCU Practitioners' Savings	\$412	\$412	\$412	\$412
SubTotal	\$102,191	\$109,147	\$86,122	\$85,742
Chase Facility Fund Savings	\$71,049	\$71,048	\$71,048	\$71,047
Vantage W. Facility Fund Savings	\$4,748	\$4,748	\$4,747	\$4,747
VWCU Imprmnt/Opportunity Fund*	\$18,313	\$18,293	\$16,287	\$9,275
Facility Fund Invest Acct /Endowment	\$26,241	\$24,079	\$24,079	\$24,079
Total	\$222,542	\$227,315	\$202,283	\$194,890

* We received anonymous designated gifts, part of which is to be used for 'sustainable' marketing activities. We called this the Opportunity Fund. Out of this account we have funded the website upgrade & partially funded of our Office improvement fund. We have also used this fund to test out other advertising opportunities and will use it for buying video equipment that will allow us to live-stream, when we return to in person services. (Bought video-equipment in August-September.)

α The Gregory School has declined to accept our rental payments since May 2020 because the school remains closed to renters, and they have terminated our lease, as of December 2021. We search for a new Sunday meeting location.

⌘ We received our first quarterly report on our investment in the SOM Foundation Endowment. The 3rd quarter was a difficult one for the markets and the investment managers worked diligently to minimize losses. We expect the 4th quarter and the year-end performance in late January or February to be much improved, and it was. ☆

Comparison between January 2021 and January 2022

Attendance/Sunday	DEcreased by	11
Offerings/month	INcreased by	\$ 97
Offerings/person/Sunday	INcreased by	\$ 12.49
Total Income	DEcreased by	\$ 2,058
Expenses	DEcreased by	\$ 702
Net Income	DEcreased by	\$ 1,194

Online only since March 2020, attendance estimated. As of the end of March we have been online for 60+ weeks for Sunday Services, classes, Mastermind groups, book studies, Vision Core and monthly Board of Trustees meetings.

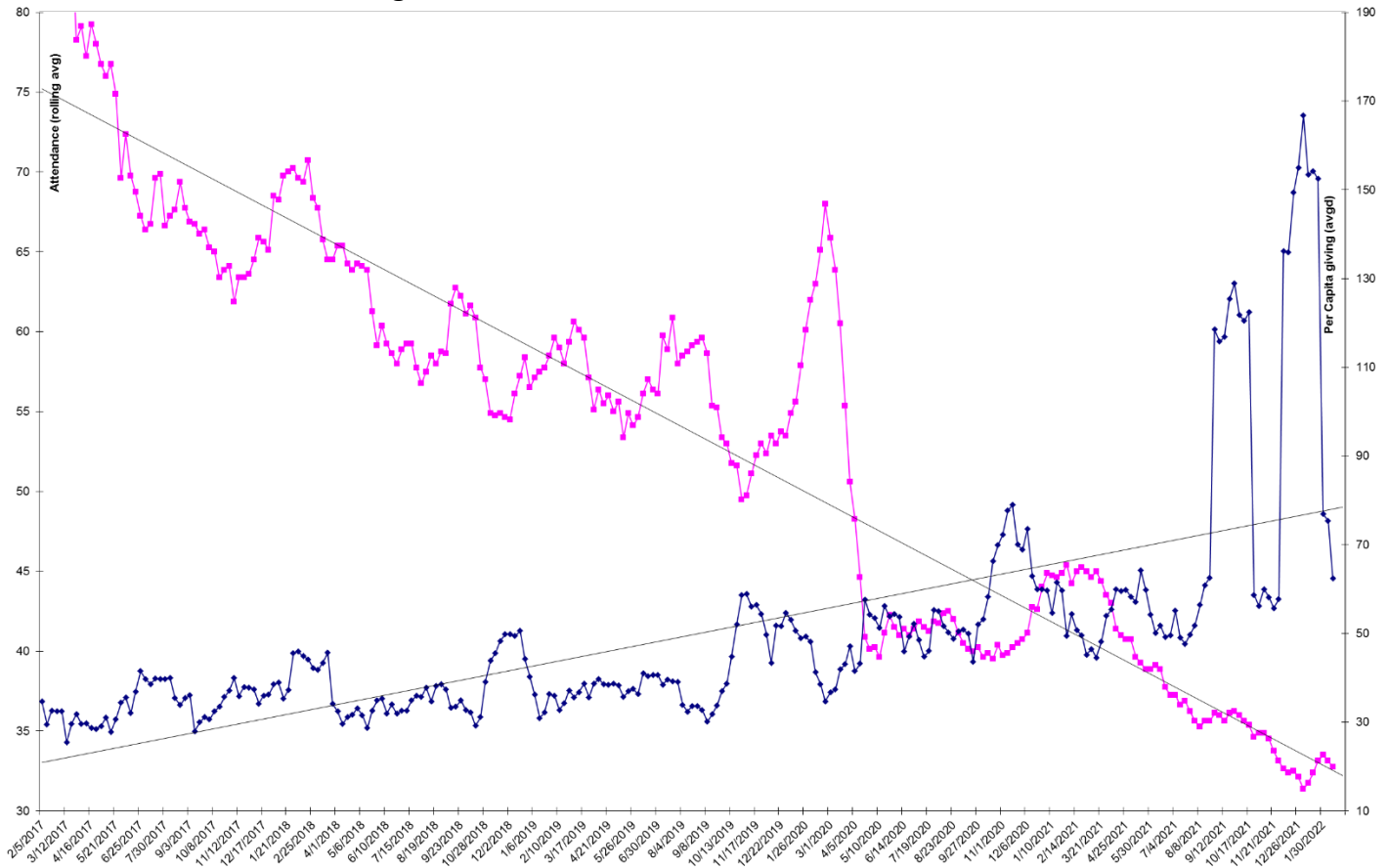
Status of the CSLT Facility Fund

Facility Fund Investment Acct Deposits: Initial Deposit \$50,000 (Nov12), Deposit \$10,236 (Mar13) Deposit \$15,188 (Dec13)
Investment Account closed December 2016 to purchase raw land at 4961 E. 22nd St. On June 3, 2019 we sold our raw land on 22nd St, and have agreed to serve as 'bank' for the buyer for five years with annual payments, on June 3 of each year.

Date	CSLT Contributions	Various Projects & Interest	Personal Donations	\$ Total
Year End 2009				29,365
Year End 2010				48,710
Year End 2011				70,361
Year End 2012	6,800	1,045	1,430	79,636
Matching Fund Reserves			2,900	82,536
Year End 2013 (Inspection)	<1,800>	4,780	3,327	88,843
Year End 2014	<600>	1,789	25,884	115,936
Year End 2015 (Moved to River Rd)	<5,223>	<1,786>	7,109	116,027
Year End 2016 (Purchased land)	<102,024>	2,068	2,440	18,511
Year End 2017 (InvAcctClosed.)		164	1,500	20,175
Year End 2018		112	1,000	21,287
Year End 2019 (sold land & bought office)	(net) <17,146>⌘		200	4,341
Year End 2020		47,479 ☺ +3	25	53,288
Year End 2021		46,587 ☺ ⌘		99,875
January 2022		2,163 ☆		102,038

- 🔑 Facility Fund expenses to relocate to our Education Center have been completed (for now). In total we spent \$59,330.32 for the down payment and the repairs required to meet the requirements of our mortgage holder. A detailed breakdown of expenditures was presented in the January 16th Board minutes. We paid \$1,440 of capital expenses from General Operations during the move.
- ☺ The annual payment on the sale of the 22nd St property initiated in 2019.
- ⌘ We received our first quarterly report on our investment in the SOM Foundation Endowment, discussed in Cash Balances above.
- ☆ We received our 2nd quarterly report on our investment in the SOM Foundation Endowment, discussed in Cash Balances above.

Attendance and Per-Person Giving Over Time



Budget and Actuals for January 2022 (next page)

January 2022				
	Jan 2022		Total	
	Actual	Budget	Actual	Budget
Income				
40100 Contributions				
40101 Sunday Offerings	4,604	9,500	4,604	9,500
40110 Online Contri	3,478	2,000	3,478	2,000
Total 40100 Contributions	8,082	11,500	8,082	11,500
43101 Facility Rental Income		40	0	40
45010 Interest / Dividend Income	4		4	0
45020 Rewards & Rebates	19		19	0
Total Income	8,105	11,540	8,105	11,540
Expenses				
Total 00 ADMINISTRATION	3,158	5,156	3,158	5,156
Total 02 MINISTER COMPENSATION	2,070	2,070	2,070	2,070
Total 03 MUSIC EXPENSE	1,850	1,967	1,850	1,967
Total 04 MINISTRY EXPENSE	0	40	0	40
Total 05 SUNDAY SERVICE EXP	200	885	200	885
Total 06 TITHING / CHARITABLE GIVING	1,212	1,725	1,212	1,725
Total Expenses	8,491	13,343	8,491	13,343
Net Operating Income	-386	-1,803	-386	-1,803
Total 81000 EDUCATION REV	325	360	325	360
Total 85000 Bookstore Revenue	-20	50	-20	50
86000 FACILITY FUND REVENUE				
86010 Facility Fund Income		0	0	0
Total 86000 FACILITY FUND REVENUE	0	0	0	0
Total Other Income	305	420	305	420
Net Other Income	305	420	305	420
Net Income	-81	-1,383	-81	-1,383

Thursday, Feb 10, 2022 09:50:37 AM GMT-8 - Accrual Basis