



Board of Trustees
Minutes from
July 15, 2021 Meeting, 4:30pm (zoom)

1	Call to Order and Evocation	Pg 2	Maria/Rev Janis	5 min
2	Visioning		Rev Janis	15 min
3	Checking In		All	5 min
4	Last Month's Minutes		Done	0 min
5	Call to Audience		Maria	1 min
6	Finance/Stewardship Report	Pgs 9-11	Rev Janis	10 min
	Discussion of current fiscal status			
	SOM Foundation Endowment Update			
7	Review Current Business Items	Pg 2		
	911 S. Craycroft update		Rev Janis	1 min
8a-k	Review Current Activities	Pgs 2-3	All	15 min
	(incl. questions raised or deferred at last Board meeting)			
9	The 2020-2021 Planning Cycle	Pg 4		
	Planning Meeting Needed?		All	2 min
	Next Board meeting Aug 19, 2021 at 4pm (zoom)		All	2 min
	Upcoming Guest Speakers		Rev Janis	1 min
10	New Business for This Meeting?	Pg 4	All	10 min
	Rev Janis' "tasks to hand off" list		All	
	Accepting our new member (transfer)		All/Janie	
	Welcoming Janet Salese as our new Board Member and Treasurer		All	
11	New Business for Next/Future Meeting?	Pg 4	All	2 min
12	Sunday's Gratitudes	Pg 4	All	5 min
13	Review CIAB Schedule	On hiatus	All	0 min
14	Lead Newsletter Articles	Pg 4	All	1 min
15	Six Month Look Ahead on Calendar	Pgs 5-6	All	5 min
16	Team Reports	Pgs 6-9	All	2 min
	Adjourn and Pray out		Rev. Janis	

Present: Maria Schuchardt, Marya Wheeler, Janie Hooper, Madeline Pallanes, Rev Janis Farmer

Absent: none

In Service: Maria Schuchardt (Running the meeting), Rev Janis (Scribe, high watch, visioning)

Guests: Janet Salese (prospective board member)

Center for Spiritual Living Tucson
Board Minutes from July 15, 2021 Meeting

1 Call to Order/Evocation 4:30pm

Maria/Rev Janis

2 Visioning

Q: What is the Highest Vision or Highest Ideal for Center for Spiritual Living Tucson?

A: Sunshine, lots of people, green grass; Lots of joyous, content people living their light and love; Powerful personalities/outgoing people having fun & doing great work for others; Love and more love, joy bubbles, a fountain; Happy puppies, lollipops (the big ones), nighttime carnival, party; Fountain, viewing things going by from inside a vehicle.

Q: What changes, evolves, or becomes as this highest vision comes into existence?

A: Disease of any kind disappears; Accretion, gathering like dust bunnies; People move along on their path skipping along. Green grass path; Movement, flow, increased aliveness; Board members standing in a circle where armored plates fall off them; Walking along a straight road which leads to infinity.

Q: Is there anything else that wants to be known, understood, or realized? What else?

A: Joy!; Jacques Brel song "If we only have Love"; Yellow vibrant color; Laughter, increased sense of connection; Increasing board size with out-of-the-box thinking; Rainbow, Shining sun.

3 Checking In (briefly, please)		All
4 Last Month's Minutes		Done
5 Call to Audience		Maria
6 Financial/Stewardship Report		Rev Janis
6a Current Financial Reporting	Report attached as pages 9-11	
6b Status of SOM Foundation Endowment We sent a \$25,000 check from our Facility Fund to the SOM Foundation Endowment during June, and a cover letter expressing our intentions of ultimately withdrawing and using these funds for purchase of our facility.		
6c Reimbursement for sale of piano complete. Funds designated as Opportunity Fund.		
7 Current Business Items		Rev Janis
7a 911 S Craycroft facilities update	Our water usage bill is slightly higher than expected. No obvious leaks or running toilets. When contacted, Tucson Water confirmed that they actually do read all meters (electronically) every month, so this is not estimated usage.	
8 Review of Current Activities		
8a Education	A flurry of classes continue. More planned. Full report, below.	Rev Janis
8b Youth	Nothing at this time	Marya
8c Board Liaisons	Were you able to contact any of your team leaders or team members (that you haven't heard from or seen in the last 6 months)?	All
8d Community & Growth		
2021 Credo: CSLT inspires spiritual expression in community with all and offers an accepting, loving, and peaceful way of living a joyful, healthier, and more abundant life. (We kept the 2020 Credo.)		
CSLT Community Presence: The recordings of our online Service continue to be viewed on YouTube. During April there were 60 views for 6.7 hours (about normal) and 63 total subscribers (increase of 2). The two videos most watched were Gary Lynn Floyd on June 13 and a normal service on June 6. I accidentally recorded the service of June 6 th to the cloud, so only the speaker was visible to the YouTube viewers, which may have made a difference in our number of watchers & how long they watched. Idea requires testing.		

<p>Newsletter Statistics: Five newsletters were sent during June to between 518-550 subscribers. Between 172-220 people (33-43%) opened them, and 21-35% of those who opened them clicked on something for further reading. The annual list cleaning removed subscribers who had not opened a newsletter for 12 mos.</p>
<p>Morning Meditation, In our Sunday Zoom Room, regularly has 4-11 individuals participating from all over North America. (Average attendance, 8 persons each day) Regular attendance continues trailing off. Bev Holland RScP from CSLTacoma and Maria Schuchardt have taken over the Morning meditation on Tuesdays for a bit. We are grateful for their support. Rev Janis intends to stop the meditation for a week beginning July 26th, and then regroup the week of August 2, to see what wants to be done.</p>
<p>8e Covid 19 The Center's response: Until something substantive changes, we remain fully online. The Gregory School has been entirely online since Christmas Break, and as of March 8 is beginning hybrid classes again. The school remains closed to 'renters', which is what they consider us.</p>
<p>8f Small Groups</p>
<p>The men's group meets online 1st & 3rd Thursdays for breakfast, with 6-8 attending. They tried in-person meetings in a park and decided to return to online. We have participants in the men's group that attend other churches and spiritual centers. This is awesome.</p>
<p>Prosperity+ Alums, with 5-8 attending meets online, 1st and 3rd Sundays 1-2pm in our second zoom room. They shifted the June 20th meeting because it conflicted with Father's Day. New graduates invited to participate.</p>
<p>Keith Gorley completed a book study discussion group on Karen Armstrong's <i>Twelve Steps to a Compassionate Life</i>, which will begin Friday March 19, and has now ended, from 4-5:30pm with four attending (in Keith's zoom room).</p>
<p>Janet Salese hosts Full Moon Labyrinth Walk as a regular activity for which we advertise and encourage participation of those persons interested. Seven participants attended the June 24th walk. The next walk will be July 23th at 8pm.</p>
<p>Janet also hosts a Movie Discussion Group on the 3rd Sunday following the Prosperity Plus Mastermind group in our second zoom room. On June 27th (gathering moved because of Father's Day) the movie was "My Octopus Teacher". Four persons attended. The July movie, on the 18th, will be "2Hearts", available from many online suppliers.</p>
<p>Zoom potluck began in February. Gregg Molzon & Marsha Merten hosted the first four. The June potluck was unhosted, 3 attended, and Rev Janis forgot to announce it. The July potluck will also be unhosted unless an alternative host presents themselves. (No one did, 5 attended)</p>
<p>8g Other Places We Might Advertise? – Madeline</p>
<p>Maddy continues to gather additional information about this and other possible (atypical) places and ways we might advertise our presence. Billboards run \$16,000/year per location. Not at this time. Maybe we could do a fundraiser for this if we wished to have a billboard for a year.</p>
<p>8h Prospective Board Members – If we have no guests, we can have this discussion. If we do, we'll have to have a separate closed Board meeting.</p>
<p>8i. Live Streaming update – Mariann starting work on Hefferlin Grant Application. Hefferlin exists to support the spread of SOM and will often cover ½ the cost of capital equipment for live-streaming etc. The application has to be complete by early September to be discussed at the November Hefferlin Board meeting. We anticipate that they will replenish ½ of our expenditures for videography equipment.</p>
<p>8j. Wall calendar for 2022. Status update from Maria. Article and request for quotes and photographs presented in the newsletter on July 14th.</p>
<p>8k. Directory. Rev Janis set up a new email (directory@tucsoncsl.org), accessible to Maria and Janet Salese as they desire to lead the activity. Maria/Janet to write a newsletter blurb for the directory, encouraging individuals to 'opt in'. (July 21st newsletter). Participants are encouraged to include a photograph.</p>

9 2020-2021 Planning Cycle	
9a Planning Mtg	Do we need one? No
9b Board Mtg	Next meeting: August Board meeting, August 19, 4pm (Sunday morning zoom link)
9c Guest Speakers	Gary Lynn Floyd spoke/sang June 13 th Attendance was on the low side of normal. Greg Tamblyn has agreed to speak/sing on July 18 th Cerise Patron has agreed to speak/sing on August 8 th . We are waiting on soliciting a guest speaker/performer for September, because we do not know at this time whether we will be in person or remain online.
10 New Business for This Meeting??	1. Rev Janis provided the list of non-ministerial tasks that she currently performs to the Board as a pre-read for this meeting. A few of the items have been taken on by a couple of the extended leadership. She is grateful for the support, and ... 2. Accepting our new member, a transfer from CSL Bakersfield 3. Janet Salese offers to serve as a Board member for a 2-year 2-month term, and accepts the office of Treasurer. The Board gratefully accepts, and celebrates.
Tabled Items	Next steps for Consolidated Community Campus: Further discussion of this item is tabled until Center and community growth clarifies our needs.
	Small group Requirements - Further discussion of this topic tabled for now.
	Paid Administrative support in the office, deferred until building open
	Idea parked until after we return to meeting in person: Creation (or Reviving) of a CSLT Business Directory for those who wish to advertise their services to each other.
	Moving Coffee News advertising to Tabled Items, pending our return to TGS.
11 New Business Items for Next Meeting ? Planning for the Annual Meeting, October 3 rd .	

12 Sunday Gratuities

Date	Honoree
7/11	All the unexpected gifts of Covid-19
7/18	(Greg Tamblyn speaking) Humor & laughter, the recognition of the healing that comes from it.
7/25	Music team
8/1	Birthdays and significant anniversaries
8/8	Monsoons
8/15	Those who have taken a class this year
8/22	Air conditioning 😊

13 CIAB Schedule

Gregory School contact: Mary Babbitt 520 243-3222
To be scheduled when we return to The Gregory.

14 Newsletter Articles

Due Who is writing

7/11 Maria
7/18 Madeline
7/25 Rev Janis
8/1 Janie
8/8 Marya
8/15 Maria
8/22 Madeline

Rotation: Rev. Janis → Janie → Marya → Maria → Madeline

15 Six Month Calendar Review Pages 5-6

16 Team Reports Pages 7-9

Adjourn and Pray Out **6:37pm**

2020-2021 Board Liaison responsibilities: –

Rev. J: Sunday: Practitioner Core, Education, Admin, Ops, Interim Treasurer

Maria: Chair, Trustees, Hospitality

Marya: Vice-Chair, Youth Program, Newcomers, Hosts

Janie: Secretary, Greeters, Gratitude Banquet, Altared States, Cinema, Bookstore

Madeline: Marcomm, Outreach, Video, Photography, Membership,

Six Month Calendar (Look Ahead!)

		July 2021					
4 Zoom ptluck	5	6 <i>Resilient</i> bookstudy completes	7	8	9	10	
11 Path to Practitioner, after svcs	12	13	14	15 Men's Group 9 Board Mtg 4:30p (zoom)	16	17	
18 Greg Tamblyn, Prosperity+ Alums 1-2pm Movie 2:30p	19	20	21	22	23 Labyrinth Walk -8pm	24	
25	26	27	28	29	30	31	
		August 2021					
1 Zoom ptluck Prosperity+ Alums 1-2pm	2	3	4	5 Men's Gp 9a Vision Core 6:30pm	6	7	
8 Cerise Patron, guest	9	10 <i>Art of Being</i> 5-7pm (zoom)	11	12	13	14	
15 Prosperity+ Alums 1-2pm Movie Gp 2:30p	16	17 <i>Art of Being</i> 5-7pm (zoom)	18	19 Men's Group 9 Board Mtg 5:30p	20	21	
22	23	24 <i>Art of Being</i> 5-7pm (zoom)	25	26	27	28	
We do not know when we will be returning to in-person Sunday services. It may happen in September.							
		September 2021					
29	30	31 <i>Art of Being</i> 5-7pm (zoom)	SEPT 1	2 Men's Gp 9a Vision Core 6:30pm	3	4	
5 Zoom ptluck Prosperity+ Alums 1-2pm	6	7 <i>Art of Being</i> 5- 7pm (zoom)	8	9	10	11	
12	13	14	15	16 Men's Group 9 Board Mtg 5:30p	17	18	

19 Prosperity+ Alums 1-2pm Movie 2:30p	20	21 <i>Revealing Wholeness</i> 5-7p? zoom	22	23	24	25
25	27	28 <i>Revealing Wholeness</i> 5-7p? zoom	29	30	OCT 1	2
October 2021						
3 Ann. Mtg. Potluck ?Prosperity+ Alums 1-2pm	4	5 <i>Revealing Wholeness</i> 5-7p? zoom	6	7 Men's Gp 9a Vision Core 6:30pm	8	9
10	11	12 <i>Revealing Wholeness</i> 5-7p? zoom	13	14	15	16
17 Prosperity+ Alums 1-2pm Movie Gp 2:30p	18	19 <i>Revealing Wholeness</i> 5-7p? zoom	20	21 Men's Group 9 Board Mtg 5:30p	22	23
24	25	26 <i>Revealing Wholeness</i> 5-7p? zoom	27	28	29	30
November 2021						
31	1	2 <i>Revealing Wholeness</i> 5-7p? zoom	3	4 Men's Gp 9a Vision Core 6:30pm	5	6
7 Potluck? Prosperity+ Alums 1-2pm	8	9 Gratitudes 5-7p (zoom)	10 Maybe Gratitudes 5:30-7:30 ofc	11	12	13
14	15	16 Gratitudes 5-7p (zoom)	17 Maybe Gratitudes 5:30-7:30 ofc	18 Men's Group 9 Board Mtg 5:30p	19	20
21 Prosperity+ Alums 1-2pm Movie Gp 2:30p	22	23 Gratitudes 5-7p (zoom)	24 Maybe Gratitudes 5:30-7:30 ofc	25 Thanksgiving	26	27
December 2021						
28	29	30 Gratitudes 5-7p (zoom)	DEC 1 Maybe Gratitudes 5:30-7:30 ofc	2 Men's Gp 9a Vision Core 6:30pm	3	4
5 Potluck? Prosperity+ Alums 1-2pm	6	7	8	9	10	11
12	13	14	15	16 Men's Group 9 Board Mtg 5:30p	17	18
19 Prosperity+ Alums 1-2pm Movie Gp 2:30p	20 Winter Solstice	21	22	23	24	25
26	27	28	29	30	31 E&B	JAN 1

CSLT Board Minutes – July 15, 2021
Team Reports for June 2021

ADMINISTRATION	Submitted by Rev. Janis
All non-essential activities continue being deferred until ‘afterwards’ (whatever that means.) Mariann retains the uploading ‘stuff’ to the website. Our webmaster, Graeme tidies up errors we find and keeps our web presence current and looking sharp. Maria S. uploads the online calendar & blog, and makes the Sacred Cinema bulletin insert (when we have Cinema, in person). Thank you Maria Kim, our new bookkeeper, continues to delight us with her competence. Our contact at the school has informed us that they are <u>not</u> allowing renters to return, yet. We remain online.	
ALTARED STATES	Submitted by Janie
We could still use one more person when we re-convene in person.	
BOOKSTORE	Submitted by Janie
On hiatus until "afterwards." Books and The Science of Mind magazines are available to purchase and either pick-up or mailing. Don't forget you can choose us as your Amazon Smile charity!	
CINEMA	Submitted by Janie
Reported above in current activities, in section 8f.	
COMPASSIONATE CARE	Submitted by Rev Janis
Some meal, care and transportation services continue to be provided in very specific cases.	
ECCLESIASTICAL CORE	Submitted by Rev Janis
Shelly Dunn continues to do the bulk of the online Sunday morning meditations. Practitioner student Maria Schuchardt now leads one Sunday Morning Meditation each month. We continued online Sunday services (through zoom). A diversity of regulars and new people keep appearing, and we get better at doing it, and individuals get more comfortable in the stay-home-isolation-mode of doing Sunday services. Rev Janis continues the morning daily practice (on zoom) with help from Bev Holland RScP, CSL Tacoma & Maria Schuchardt on Tuesdays. We are grateful for their support. Reported above under 8d. Rev Janis intends to stop the meditation for a week beginning July 26th, then regroup the week of August 2, to see what wants to be done.	
EDUCATION CORE	Submitted by Rev Janis
Keith Gorley's book study on <i>Twelve Steps to a Compassionate Life</i> completed with four participating. Rev Janis facilitated a book study in Rick Hanson's <i>Resilient</i> on Tuesday evenings during June. Attendance averaged 8-9. The bookstudy continues one more week, concluding on July 6. Material is rich and deep, conversations, too. A community survey was run in the newsletter to determine interest level in the new CSL courses, and to assess whether people would prefer gathering online or in person. Results will be available before the July Board Meeting. Keith Gorley is considering a new bookstudy on Frederick Bailes classic text <i>Hidden Power for Human Problems</i> . He envisions starting sometime in August.	
FACILITIES TEAM	Report is included as agenda item. Submitted by Rev Janis
FUNDING TEAM	Reported as agenda items in Financials Submitted by Rev Janis
GREETERS	Situation normal, until it wasn't. Submitted by Janie
HOSPITALITY TEAM	Zoom potluck was unhosted in June 3 attending Submitted by Maria
HOST TEAM	Hosts participate in the online services. We are grateful for their service. Submitted by Marya
(FULL MOON) LABYRINTH WALK	Submitted by Rev Janis

Reported in current business, 8f. We are grateful for Janet's leadership.

MARKETING AND COMMUNICATIONS TEAM/OUTREACH

Submitted by Madeline/Mariann

Promotions were written and distributed for the 6/13 Zoom talk/music presentation by Gary Lynn Floyd and materials prepared for the 7/18 zoom talk/music by Greg Tamblyn & the same for Cerise Patron on 8/8.

MEMBERSHIP

Submitted by Madeline

Membership class being planned. Pat adjusting the curriculum for the 2nd week.

Need to pick dates and get it on the calendar – Madeline/Pat

MINISTER'S TRAVEL PLANS

Submitted by Rev Janis

No travel in June. Rev Janis was/will be present for the guest speakers and guest musical artists, as she runs the 1^o zoom account. None anticipated in July. Zoom training continuing so that others can run primary zoom account and she can take classes, or take a weekend (or a few days) off. Lots of zooming.

MUSIC/SOUND

Submitted by Rev Janis

Our CSLT Orchestra continues to impress with the way they make magic behind the scenes for our Sunday performance music, and with the quality of music they provide. We are so grateful for our music team.

In June, we sang "I Dreamed of Rain" written by Jan Garrett & JD Martin, with the intention of encouraging the monsoons to arrive. In July, our opening congregational song will be Teri Wilder's "Rise Up."

On June 13th, Gary Lynn Floyd zoomed with us for music and message. For his first time giving a talk, he was great.

On July 18th, humorist and minister Greg Tamblyn with zoom with us for music and message.

On August 8, Cerise Patron will zoom with us for music and message.

NEWCOMERS TEAM Situation normal, until it wasn't.

Submitted by Marya

PRACTITIONER CORE

Submitted by Rev Janis

Shelly Dunn conducts the bulk of the Sunday morning pre-service meditations and providing platform support twice a month, in addition to other behind the scene tasks. Practitioner student Maria Schuchardt leads Sunday Morning Meditation Practice once each month.

Shelly continues to host the 'alumni' Prosperity Plus III Alumni group meetings once each month. Marya hosts the second meeting.

YOUTH & FAMILY Situation normal, until it wasn't.

Submitted by Marya

VIDEOGRAPHY AND PHOTOGRAPHY

Submitted by Madeline/Mariann Moery - Team Leader

We have begun drafting an application for grant money from the Hefferlin Foundation to cover up to half of the expense of livestream equipment. The plan remains that when in-person returns we will continue online access for those who do not wish face-to-face and for those who attend from outside Tucson. Until we meet in person, we will continue with our current Zoom service posting links on our website and our Facebook page to the YouTube recordings of Rev. Janis' reminder and prayer.

VISION CORE NOTES initiated July 1 6, 6:30pm

Submitted by Rev Janis

Participating on zoom: Chris Wheeler, Marya Wheeler & Rev Janis Farmer

Participating independently: Carol Nigut

What is the highest vision, highest ideal for Center for Spiritual Living Tucson?

Tasmanian devil (whirling funnel cloud) of busyness; Tall skinny gentleman with a dirty hat, wearing a monocle; A train – steady, easy movement, the path is well lit and open; Oneness revealed, a world of peace, harmony and abundance for all.

What changes, evolves becomes as this vision comes into being?

Puffy, smiling, stylized cloud with cartoon eyes and a big grin, visual of the Liberty Bell; The Help, Driving Miss Daisy, diversity and inclusion; Doubters diminish, truth seekers rise up, connections become visible; Shaft of brilliant white light, the light of God permeating into and through all beings. They awaken to Its Presence. Love radiates into the world, and golden sunlight reverberates through the earth, and all upon it.

Is there anything else that wants to be known, realized or understood?

River flowing, good earth, rays of sunshine (like the AZ flag), Cheshire Cat eyes; Bouquets of dried wheat in sheaves, like a Thanksgiving Centerpiece; song "Anything is Possible", laughter; Our time is NOW!!

Center for Spiritual Living Tucson
Board Agenda & Reports for June
July 15, 2021

6 Finance/Stewardship Report

Interim, Rev Janis

Executive Summary: June was a 4-Sunday month, again entirely online. Average attendance continues to decrease slightly, even as the Board continues to vision for a growing Center.

The Board has agreed to sustain and hold the vision of increased attendance by individuals willing and able to participate (in all ways and on many levels), which allows us opportunities to expand our reach in Tucson.

	Total Sunday Offerings and P+	New Designated Monies*	Total Income	Total Expenses	Net Income	\$ per Weekly Attendee	Average Weekly Attendance
June	\$5,658	\$49,499	\$6,048	\$8,210	<\$2,162>	37.72	38+
May	\$10,020	0	\$10,046	\$9,027	\$1,019	\$53.01	38+
April	\$ 9,720	0	\$10,002	\$10,782	<-\$ 780>	\$62.31	40+
March	\$10,613	0	\$10,654	\$9,521	\$1,133	\$63.55	42+
February	\$9,351	0	\$10,256	\$8,692	\$1,564	\$51.66	45+

*Presently we have a stand-alone Facility Fund, Scholarship Fund, a Practitioner Fund, an Opportunity Fund (incl. piano fund) and a Compassionate Heart fund. All are designated and are kept separated from Total Income or Total Expenses.

Cash Balances	June		May	April	March
Chase General Ops Checking	\$14,467		\$14,317	\$14,242	\$14,085
Vantage W. Gen Ops Checking	\$36,911		\$39,984	\$39,819	\$39,208
Vantage W. Additional Savings	\$10,003		\$10,003	\$10,002	\$10,002
Chase Education (Savings) Fund	0		0	0	0
Vantage W. Education Savings	\$11,462		\$11,167	\$11,166	\$13,039
Chase (Operating) Savings	0		0	0	0
VWCU Practitioners' Savings	\$412		\$412	\$412	\$412
Designated Holdings (Music)	0		0	0	0
SubTotal	\$73,255		\$75,883	\$75,641	\$76,746
Chase Opportunity Fund	0		0	0	0
Chase Facility Fund Savings	\$71,045		\$48,545	\$48,545	\$48,544
Vantage W. Facility Fund Savings	\$4,746		\$4,746	\$4,746	\$4,746
VWCU Imprmnt/Opportunity Fund*	\$24,663 ☆		\$22,649	\$23,332	\$23,332
Facility Fund Invest Acct /Endowment	\$25,000		0	0	0
Total	\$198,709		\$151,823	\$152,264	\$153,368

* We received anonymous designated gifts, part of which is to be used for 'sustainable' marketing activities. We called this the Opportunity Fund. Out of this account we have funded the website upgrade & partially funded of our Office improvement fund. We

have also used this fund to test out other advertising opportunities and will use it for buying video equipment that will allow us to live-stream, when we return to in person services.

α The Gregory School has declined to accept our rental payments since May 2020 because the school remains closed.

☆ Reimbursement from sale of piano now complete

Comparison between June 2020 and June 2021

Attendance/Sunday	DEcreased by	3
Offerings/month	DEcreased by	\$ 3,011
Offerings/person/Sunday	DEcreased by	\$ 15.46
Total Income	DEcreased by	\$ 2,822
Expenses	INcreased by	\$ 543
Net Income	DEcreased by	\$ 3,365

Online only since March 2020, attendance estimated. As of the end of March we have been online for 60+ weeks for Sunday Services, classes, Mastermind groups, book studies, Vision Core and monthly Board of Trustees meetings.

Status of the CSLT Facility Fund

Facility Fund Investment Acct Deposits: Initial Deposit \$50,000 (Nov12), Deposit \$10,236 (Mar13) Deposit \$15,188 (Dec13)

Investment Account closed December 2016 to purchase raw land at 4961 E. 22nd St. On June 3, 2019 we sold our raw land on 22nd St, and have agreed to serve as 'bank' for the buyer for five years with annual payments, on June 3 of each year.

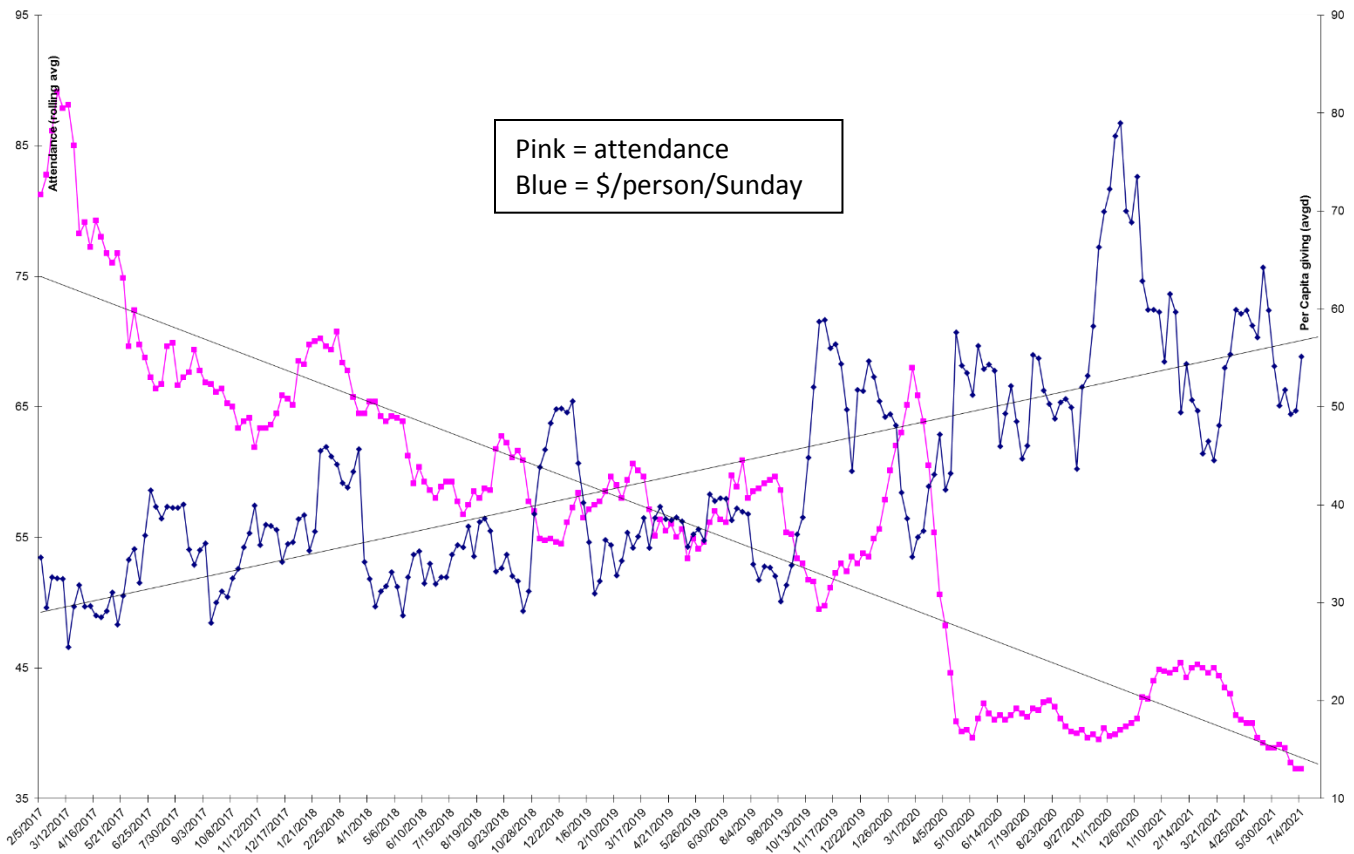
Date	CSLT Contributions	Various Projects & Interest	Personal Donations	\$ Total
Year End 2009				29,365
Year End 2010				48,710
Year End 2011				70,361
Year End 2012	6,800	1,045	1,430	79,636
Matching Fund Reserves			2,900	82,536
Year End 2013 (Inspection)	<1,800>	4,780	3,327	88,843
Year End 2014	<600>	1,789	25,884	115,936
Year End 2015 (Moved to River Rd)	<5,223>	<1,786>	7,109	116,027
Year End 2016 (Purchased land)	<102,024>	2,068	2,440	18,511
Year End 2017 (InvAcctClosed.)		164	1,500	20,175
Year End 2018		112	1,000	21,287
Year End 2019 (sold land & bought office)	(net) <17,146> [Ⓐ]		200	4,341
Year End 2020		47,479 ☺ +3	25	53,288
January 2021				53,288
February		2		53,290
March				53,290
April		1		53,291
May				53,291
June 2021		47,499 ☺ +1		100,791

[Ⓐ] Facility Fund expenses to relocate to our Education Center have been completed (for now). In total we spent \$59,330.32 for the down payment and the repairs required to meet the requirements of our mortgage holder. A detailed breakdown of expenditures was presented in the January 16th Board minutes. We paid \$1,440 of capital expenses from General Operations during the move.

☺ The annual payment on the sale of the 22nd St property initiated in 2019.

Budget and Actuals for 2021 reported separately

Attendance and Per-Person Giving Over Time (next page)



Range Report for 2nd Quarter 2021 (with previous quarters for comparison)

Donations/ Quarter	2Q2021		1Q2021		4Q2020		3Q2020		2Q2020	
	All	<u>Extnd Ldrs</u>	All	<u>Extnd Ldrs</u>	All	<u>Extnd Ldrs</u>	All	<u>Extnd Ldrs</u>	All	<u>Extnd Ldrs</u>
>\$2,000	1	1	3	2	6	3	2	1	2	1
\$1,500-1,999	3	1	3	1	2	0	4	2	2	1
\$1,000-1,499	5	1	1	0	6	2	3	1	5	1
\$750-999	2	2	2	1	2	1	4	3	2	1
\$500-749	8	3	11	5	14	5	9	2	7	3
\$250-499	11	2	11	4	8	2	8	2	8	4
\$100-249	7	2	13	3	11	3	12	5	15	4
\$1-99	10	1	3	0	3	0	11	1	6	1
0 or <u>UnID'd</u>	?	6	?	4	?	4	?	3	?	3
Total Number	47+	19	47+	20	52+	20	53+	20	47+	19

For the 2nd quarter 2021, the bright line ((20% of the contributors donated 80% of the income) was \$450 and included 8 leaders out of 20 contributors. Our 4th quarter of being entirely online.

For the 1st quarter 2021, the bright line ((20% of the contributors donated 80% of the income) was \$500 and included 8 leaders out of 19 contributors. Our 4th quarter of being entirely online.

For the 4th quarter 2020, the bright line was \$600 and included 10 leaders out of 26 contributors. Our third quarter of being entirely online.

For the 3rd quarter 2020, the bright line was \$540 and included 9 leaders out of 20 contributors. Our second quarter of being entirely online.

For the 2nd quarter 2020, the bright line was \$450 and included 8 leaders out of 21 contributors. Our first quarter of being entirely online.