



**Board of Trustees  
Minutes from  
April 15, 2021 Meeting**

1	Call to Order and Evocation	Pg 2	Maria/Rev Janis	5 min
2	Visioning		Rev Janis	15 min
3	Checking In		All	5 min
4	Last Month's Minutes		Done	0 min
5	Call to Audience		Maria	1 min
6	Finance/Stewardship Report	Pgs 10-12	Rev Janis	10 min
	Discussion of current fiscal status			
7	Review Current Business Items	Pg 2		
	911 S. Craycroft update		Rev Janis	1 min
8a-h	Review Current Activities	Pgs 2-3	All	15 min
	(incl. questions raised or deferred at last Board meeting)			
9	The 2020-2021 Planning Cycle	Pg 3-4		
	Planning Meeting Needed?		All	2 min
	Next Board meeting May 20, 2021 at 5:30pm (zoom)		All	0 min
	Upcoming Guest Speakers		Rev Janis	1 min
10	New Business for This Meeting?	Pg 4	Rev Janis	10 min
	Live-Streaming Update			
	SOM Endowments Update			
11	New Business for Next/Future Meeting?	Pg 5	All	2 min
12	Sunday's Gratuities	Pg 5	All	5 min
13	Review CIAB Schedule	On hiatus	All	0 min
14	Lead Newsletter Articles	Pg 5	All	1 min
15	Six Month Look Ahead on Calendar	Pgs 6-7	All	5 min
16	Team Reports	Pgs 7-10	All	2 min
	Adjourn and Pray out		Rev. Janis	

Present: Maria Schuchardt, Marya Wheeler, Janie Hooper, Madeline Pallanes, Rev Janis Farmer

Absent: none

In Service: Maria Schuchardt (Running the meeting), Rev Janis (Scribe, high watch, visioning)

Guests: none

Center for Spiritual Living Tucson  
Board Minutes from April 15, 2021

1 Call to Order/Evocation 5:35pm

Maria/Rev Janis

**2 Visioning**

**Q: What is the Highest Vision or Highest Ideal for Center for Spiritual Living Tucson?**

A: Big building. People coming and going. Big book store open to the public.; Scent of pine, crystal clear night sky LOTS of Stars, Peace, serenity; Feels like love, a ball with map of world on it; Golden globe, rainbows with people dancing underneath; Trumpet call, Greek pillars, flowers – presentation of some sort.

**Q: What changes, evolves, or becomes as this highest vision comes into existence?**

A: Out with the old, in with the new. People flourishing and vibrant; Maskless, movement; Love is all encompassing, ball of earth turns red. The ball of earth turns red.; Gate opens, music in the distance, ‘lightness of being’; Circular saw whirring, cutting off arms and legs, trees – redwoods, Don’t try too hard.

**Q: Is there anything else that wants to be known, understood, or realized? What else?**

A: People aware of the good surrounding us; Bright Red ball; Opportunities abound; Horseshoes ‘right side up’, fresh flowers in a vase; All as Spirit!

<b>3 Checking In (briefly, please)</b>		All
<b>4 Last Month's Minutes</b>		Done
<b>5 Call to Audience (no audience)</b>		Maria
<b>6 Financial/Stewardship Report</b>		Rev Janis
<b>6a Current Financial Reporting</b>		Report attached as pages 9-11
<b>7 Current Business Items</b>		Rev Janis
<b>7a 911 S Craycroft facilities update</b>	Nothing to report	
<b>8 Review of Current Activities</b>		
<b>8a Education</b>	A flurry of classes continue. More planned. Full report, below.	Rev Janis
<b>8b Youth</b>	On hold at this time.	Marya
<b>8c Board Liaisons</b>	Were you able to contact any of your team leaders or team members (that you haven't heard from or seen in the last 6 months)? Yes, some. All is well.	All
<b>8d Community &amp; Growth</b>		
<b>2021 Credo:</b> CSLT inspires spiritual expression in community with all and offers an accepting, loving, and peaceful way of living a joyful, healthier, and more abundant life. (We kept the 2020 Credo.)		
<b>CSLT Community Presence:</b> The recordings of our online Service continue to be viewed on YouTube. During March there were 66 views for 10.2 hours and 55 total subscribers (increase of 4). The two videos most watched were our guest presenter Robin Hackett on March 21, followed by a normal service on March 28th.		
<b>Newsletter Statistics:</b> Four newsletters were sent during March to between 549-554 subscribers. Between 177-221 people (32-40%) opened them, and 26-38% of those who opened them clicked on something for further reading. Our numbers remain quite good		
<b>Morning Meditation,</b> In our Sunday Zoom Room, regularly has 7-15 individuals participating from all over North America. (Average attendance, 10 persons each day) Bev Holland RScP from CSL Tacoma and Maria Schuchardt have taken over the Morning meditation on Tuesdays for a few months so Rev Janis can take a Spiral Dynamics class with a group in Europe.		

<p><b>8e Covid 19</b> The Center's response: Until something substantive changes, we remain online. The Gregory School has been entirely online since Christmas Break, and as of March 8 is beginning hybrid classes again. The school remains closed to 'renters', which is what they consider us.</p>
<p><b>8f Small Groups</b></p>
<p>The men's group meets online/in person 1st &amp; 3rd Thursdays for breakfast, with 6-8 attending.</p>
<p>Prosperity+ Alums, with 5-8 attending meets online, 1<sup>st</sup> and 3<sup>rd</sup> Sundays 1-2pm in our second zoom room. New graduates invited to participate.</p>
<p>Keith Gorley began a new book study discussion group on Karen Armstrong's <i>Twelve Steps to a Compassionate Life</i>, which began Friday March 19 from 4-5:30pm with six attending (in Keith's zoom room).</p>
<p>Janet Salese has established the Full Moon Labyrinth Walk as a regular activity for which we advertise and encourage participation of those persons interested. Five CSLT participants + 2 from Unity of Tucson attended the March 28<sup>th</sup> walk. The next walk will be April 26<sup>th</sup> at 7:30. Janet requests those who participate to please bring a mask, and plan to wear it.</p>
<p>Janet also initiated a Movie Discussion Group on the 3<sup>rd</sup> Sunday following the Prosperity Plus Mastermind group in our second zoom room. March's movie, on the 21<sup>st</sup>, was "Conversations with God", available on YouTube, with 5 participating. April's movie, on April 18 at 2:30 will be "Cowspiracy: The Sustainability Secret" which is available from multiple sources including Netflix, Prime &amp; YouTube.</p>
<p>Zoom potluck began in February. Gregg Molzon &amp; Marsha Merten hosted. Suggestion to add a breakout room for spiritual discussion, rather than 'just' socializing, beginning with the March potluck. In March, 7 attended. No discussion group formed, yet.</p>
<p>Two facilitators have stepped forward to lead the home study book groups on Julia Cameron's <i>The Prosperous Heart</i> beginning mid-April (18<sup>th</sup> &amp; 19<sup>th</sup>). One has chosen to meet Sunday afternoons 2-4 and the other Mondays 4-5:30pm. Both will start out as 6 weeks, but will extend the course as the students find necessary. Both will use our zoom rooms. A third facilitator has offered the potential for an in-person gathering at her home for those individuals who have been vaccinated + 2 weeks.</p>
<p><b>8g Places We Might Advertise? – Madeline</b></p> <p>Our annual renewal came due for our ad in the Desert Times, Explorer New, Marana News, Foothill News. These four papers are delivered free-of-charge to over 200,000 mailboxes across Tucson. Our ad on the Worship Guide page, roughly business card size, runs us \$1,050/year. It is hard to know if it created any new guests for us in 2020. This same company also produces the Tucson Weekly. We can have a business card sized ad in this magazine for \$525. Maddy is looking into the distribution of this publication and will report out at the meeting.</p> <p>Do we want to renew our listing in the Desert Times Worship Guide? <b>No</b></p> <p>Do we wish to advertise in the Tucson Weekly? <b>Yes</b></p> <p>Without our subscription to the Desert Times renewed, Tucson Weekly is \$725/year. <b>OK.</b> Rev Janis to contact the company that produces both and let them know our decision.</p> <p>Other places to consider advertising: Sides of buses, Bus stop benches, billboards. Maddy to check into these and report next month.</p>
<p><b>8h Educational Offering for Our Community and Guests – Marya</b></p> <p>Topic: Race and Identity. Speaker Ashley LaRussa (<a href="https://rouxeventsllc.com/our-story/">https://rouxeventsllc.com/our-story/</a>), April 17, 1pm. The speaker chose to use her own zoom room and pre-registration is required. We have advertised this event through our own newsletter, on our Facebook page and on our website. Per the request of the speaker, we are not advertising it outside of our community connections. It will be interesting to see what the attendance is for this community activity.</p>
<p><b>9 2020-2021 Planning Cycle</b></p>
<p><b>9a Planning Mtg</b> Do we need one? Not at this time</p>

<b>9b Board Mtg</b>	Board is considering meeting in person at the office for the next meeting: May 20, 2021 at 4 pm. If a congregant wishes to attend, they need to let the office know ahead of time ( <a href="mailto:admin@tucsoncsl.org">admin@tucsoncsl.org</a> ), as space is limited due to City of Tucson social distancing requirements.
<b>9c Guest Speakers</b>	<ul style="list-style-type: none"> <li>• Singer/songwriter Robin Hackett, March 21 (<a href="http://robinhackettmusic.com">robinhackettmusic.com</a>) for message and music. Maria advertised in Caliente (AZ Daily Star) and Tucson Weekly. Event loaded in Natural Awakenings &amp; on our Facebook page. Robin’s music and message well received by attendees. No additional guests identified as a result of advertising this musical guest.</li> <li>• Singer/songwriter Faith Rivera, April 25 (<a href="http://faithrivera.com">faithrivera.com</a>) for message &amp; music.</li> <li>• Jan Garrett &amp; JD Martin have agreed to speak/sing May 2nd</li> <li>• Gary Lynn Floyd has agreed to speak/sing on June 13<sup>th</sup></li> <li>• Greg Tamblyn speak/sing on July 18<sup>th</sup></li> </ul>
<b>10 New Business for This Meeting?</b>	<p>We have received a bid from a local Theatrical Production Company to provide us with the equipment lists and the training we will require to live-stream and record our Sunday services when we return to in-person services. Their bid also includes a limited amount of training for ‘our personnel’ to run the equipment. It does not include storage or streaming.</p> <p><u>Rev Janis’ report:</u> The bid includes everything we will need to live-stream and video-record a quality presentation for the foreseeable future. We’ve also found out costs, and coverage, for licenses to recording and sharing our music offerings online. We are discussing using some of our training hours to train staff at The Gregory, since they are in the best position to train their students who will be the likely operators of the equipment. Storage of the new equipment will be at the Gregory, if possible. We may need additional insurance coverage. We continue to solicit best practices from other Centers presently live-streaming, and producing their Sunday Services and other offerings online.</p> <p>Rev Janis spoke to Michael Schlut from SOM Endowments about the possibility of us saving some of our Facility Fund with the Endowments. Last year they made 15% in returns on their funds. Typically their return is 10%. Their minimum for entry is \$25K, which we have available to use for this purpose if we choose.</p> <p><u>Discussion:</u> Board is a tentative ‘yes’ for this method of growing \$25K of our Facility Fund. They would like to have a conversation with Michael Schlut at the next Board Meeting (over zoom), to confirm what we know, and ask questions.</p> <p><u>Additional Item:</u> Maria would like to create a wall calendar, similar to the ones done for 2020 and 2021, for 2022 using art work created by our congregants, and also ‘quotable quotes’ from our congregants. This is not seen as a fund-raising activity, but a self-supporting community building project. She envisions a call to artists to submit their work starting in early June.</p>
<b>Tabled Items</b>	Next steps for Consolidated Community Campus: Further discussion of this item is tabled until Center and community growth clarifies our needs.
	Small group Requirements - Further discussion of this topic tabled for now.
	Paid Administrative support in the office, deferred until building open
	Idea parked until after we return to meeting in person: Creation (or Reviving) of a CSLT Business Directory for those who wish to advertise their services to each other.

Moving Coffee News advertising to Tabled Items, pending our return to TGS.

**11 New Business Items for Next Meeting ?** With two of our existing Board members rotating off in October, it is time to start looking for prospective Board members for the next year(s) that begins in October. Rev Janis will pull a list of congregants who are members, have taken Foundations (and ideally Visioning), are actively involved in the life of our Center, lives locally year-round, and financially supporting. If you meet these qualifications and would like to find out more about joining the Board in October 2021 for a two or three-year term, please contact Rev Janis at [revjanis@tucsoncl.org](mailto:revjanis@tucsoncl.org) or Maria Schuchardt at [mariamschuchardt@gmail.com](mailto:mariamschuchardt@gmail.com).

## 12 Sunday Gratuities

Date	Honoree
4/11	Instructors of classes, including small group book study leaders
4/18	Music Team
4/25	(Faith Rivera with us) Janet (Movie Discussion Group & Labyrinth Walk)
5/2	(Jan & JD with us) Birthdays & Significant Anniversaries
5/9	Mothers!
5/16	Those who have completed certificated classes this year
5/23	Our pets and the people who love them

**13 CIAB Schedule** Gregory School contact: Mary Babbitt 520 243-3222  
To be scheduled when we return to The Gregory.

## 14 Newsletter Articles

### Due Who is writing

4/11 Rev Janis  
4/18 Janie  
4/25 Marya  
5/2 Maria  
5/9 Madeline  
5/16 Rev Janis  
5/23 Janie

Rotation: Rev. Janis → Janie → Marya → Maria → Madeline

**15 Six Month Calendar Review** Pages 6-7

**16 Team Reports** Pages 7-10

**Adjourn and Pray Out 7:15pm**

2020-2021 Board Liaison responsibilities: –

**Rev. J:** Sunday: Practitioner Core, Education, Admin, Ops, Interim Treasurer

**Maria:** Chair, Trustees, Hospitality

**Marya:** Vice-Chair, Youth Program, Newcomers, Hosts

**Janie:** Secretary, Greeters, Gratitude Banquet, Altared States, Cinema, Bookstore

**Madeline:** Marcomm, Outreach, Video, Photography, Membership,

## Six Month Calendar (Look Ahead!)

March 2021						
Sunday	Monday	Tuesday	Wednesday	Thursday	Friday	Saturday
28	<b>March 1</b> Roots	2	3 Foundations (5:30-7:30pm)	4 Men's Group 9 Vision Core 6:30pm	5	6
7 Prosperity+ Alums 1-2pm	8 Roots	9	10 Foundat's 5:30-7:30pm	11	12	13
14	15 Roots	16	17 Foundat's 5:30-7:30pm	18 Men's Group 9 Board Meeting, 5:30pm	19 Compass. Life (KG) 4p	20 Found Meditation Wkshop
21 Robin Hackett spkg, Prosperity+ Alums 1-2pm Movies 2:30p	22 Roots	23	24 Foundat's 5:30-7:30pm	25	26 Compass. Life (KG) 4- 5:30pm	27
28	29 Roots	30	31 Foundat's (5:30-7:30pm)	<b>APR 1</b> Men's Gp 9 Vision Core 6:30pm	2 Compass. Life (KG) 4p	3
April 2021						
Sunday	Monday	Tuesday	Wednesday	Thursday	Friday	Saturday
4 Prosperity+ Alums 1-2pm	5 Roots ends 5:30-7:30pm	6	7 Foundations ends 5:30- 7:30pm	8	9 Compass. Life (KG) 4- 5:30pm	10
11	12	13	14	15 Men's Group 9 Board Meeting 5:30p	16 Compass. Life (KG) 4- 5:30pm	17 DEI event 1pm zoom
Three facilitators have agreed to start <i>The Prosperous Heart</i> book studies in mid- and late-April						
18 Prosperity+ Alums 1-2pm Movies 2:30p	19	20	21	22	23 Compass. Life (KG) 4- 5:30pm	24
25 Faith Rivera spkg & singing, Labyrinth 7:30	26	27	28	29	30 Compass. Life (KG) 4- 5:30pm	<b>MAY 1</b>
May 2021						
Sunday	Monday	Tuesday	Wednesday	Thursday	Friday	Saturday
2 Prosperity+ Alums 1-2pm Jan Garrett & JD Martin	3	4	4	6 Men's Gp 9a Vision Core 6:30p	7 Compass. Life (KG) 4- 5:30pm	8
9	10	11	12	13	14 Compass. Life (KG) 4- 5:30pm	15
16 Prosperity+ Alums 1-2pm Movies 2:30p	17	18	19 Visioning class 6-8pm	20 Men's Group 9 Board Meeting 5:30pm	21 Compass. Life (KG) 4- 5:30pm	22
23	24	25	26 Visioning 6-8pm	27	28 Compass. Life (KG) 4- 5:30pm	29

Rick Hanson's *Resilient*. Community Book Study Sundays & during the week. Either Mon. or Tues. Afternoon or Evening.

June 2021						
30	31	<b>JUNE 1</b>	2 Visioning 6-8pm	3 Men's Gp 9a Vision Core 6:30pm	4 Compass. Life (KG) 4-5:30pm	5
6 Prosperity+ Alums 1-2pm	7 <i>Resilient?</i> w/Rev Janis	8 <i>Resilient?</i> w/Rev Janis	9 Visioning 6-8pm	10	11	12
13 Gary Lynn Floyd spkg & singing	14 <i>Resilient?</i>	15 <i>Resilient?</i>	16 Visioning 6-8pm	17 Men's Group 9 Board Meeting 5:30pm	18	19
20 Prosperity+ Alums 1-2pm Movies 2:30p	21 <i>Resilient?</i>	22 <i>Resilient?</i>	23 Visioning 6-8pm	24	25	26
27	28 <i>Resilient?</i>	29 <i>Resilient?</i>	30 Visioning 6-8pm	<b>JULY 1</b> Men's Gp 9a Vision Core 6:30pm	2	3
July 2021						
4 Prosperity+ Alums 1-2pm	5	6	7 Visioning 6-8pm	8	9	10
11	12	13	14	15 Men's Group 9 Board Mtg 5:30p	16	17
18 Prosperity+ Alums 1-2pm Movie Gp 2:30p	19	20	21	22	23	24
25	26	27	28	29	30	31
August 2021						
1 Prosperity+ Alums 1-2pm	2	3	4	5 Men's Gp 9a Vision Core 6:30pm	6	7
8	9	10	11	12	13	14
15 Prosperity+ Alums 1-2pm Movie Gp 2:30p	16	17	18	19 Men's Group 9 Board Mtg 5:30p	20	21
22	23	24	25	26	27	28
29	30	31	SEPT 1	2	3	4

**CSLT Board Minutes – April 15, 2021**

**Team Reports for March 2021**

**ADMINISTRATION**

Submitted by Rev. Janis

All non-essential activities continue being deferred until 'afterwards' (whatever that means.)

Mariann retains the uploading 'stuff' to the website. Our webmaster, Graeme tidies up errors we find and keeps our web presence looking sharp. Maria S. uploads the online calendar & blog, and makes the Sacred Cinema bulletin insert (when we have Cinema, in person). Thank you Maria

Kim, our new bookkeeper, continues to delight us with her competence.



Our contact at the school has informed us that they are not allowing renters to return. We remain entirely online.

**ALTARED STATES**

Submitted by Janie

We could still use one more person when we re-convene in person.

**BOOKSTORE**

Submitted by Janie

On hiatus until "afterwards." Books and The Science of Mind magazines are available to purchase and either pick-up or mailing. Don't forget you can choose us as your Amazon Smile charity!

**CINEMA**

Submitted by Janie

Movie discussion group (zoom) met March 21st. Janet Salese hosted. Five persons attended to discuss "Conversations with God". The movie for April 18th will be "Cowspiracy: The Sustainability Secret."

**COMPASSIONATE CARE**

Submitted by Rev Janis

Some meal, care and transportation services continue to be provided in very specific cases.

**ECCLESIASTICAL CORE**

Submitted by Rev Janis

Shelly Dunn continues to do the bulk of the online Sunday morning meditations. Practitioner student Maria Schuchardt now leads one Sunday Morning Meditation each month.

We continued online Sunday services (through zoom). A diversity of regulars and new people keep appearing, and we get better at doing it, and individuals get more comfortable in the stay-home-isolation-mode of doing Sunday services.

Rev Janis continues the morning daily practice (on zoom). In February there were 281 individual points of contact and 27 group affirmative prayers. On average we had 10 persons participating daily during March. We've been entirely online for almost a year. Bev Holland RScP (CSL Tacoma) has assisted when Rev Janis had to be elsewhere, and will facilitate the morning gatherings on Tuesdays through May while Rev Janis is taking a non-CSL zoom class. We remain grateful that zoom allows us to operate so easily at a distance.

**EDUCATION CORE**

Submitted by Rev Janis

The certificated class "Roots of the Science of Mind" continues with 9 participants. It completes in early April. "Foundations of the Science of Mind" continues with 5 participants. Saturday meditation workshop was well received.

Keith Gorley's next book study on Karen Armstrong's *Twelve Steps to a Compassionate Life* began Friday March 19, 4-5:30pm with six participants.

We are exploring the possibility of a certificated Visioning class being offered on Wednesday evenings this summer (mid-May – early July) by a ministerial student from CSL Reno, if at least 6 participants are interested.

**FACILITIES TEAM** Report is included as agenda item.

Submitted by Rev Janis

**FUNDING TEAM** Reported as agenda items.

Submitted by Rev Janis

**GREETERS** Situation normal, until it wasn't.

Submitted by Janie

**HOSPITALITY TEAM** Zoom potluck owned at Community Envisioning. Continuing.

Submitted by Maria

**HOST TEAM** Hosts participate in the online services. We are grateful for their service.

Submitted by Marya

**(FULL MOON) LABYRINTH WALK**

Submitted by Rev Janis

Janet continues to host at Unity of Tucson's labyrinth and has invited Unity of Tucson's congregants to join. She had five CSLT persons attend the March full moon walk + 2 from Unity of Tucson.

**MARKETING AND COMMUNICATIONS TEAM/OUTREACH**

Submitted by Madeline/Mariann



A cornucopia of activities to be added to our website, and Facebook page. Ashley on April 17, Faith on April 25, and then Garrett & Martin on May 2. Natural Awakenings gave us a good event splash on the three musical offerings in April, May & June. Updated Yelp page.

#### **MEMBERSHIP**

Submitted by Madeline

Membership class being planned. Pat adjusting the curriculum for the 2<sup>nd</sup> week.

**Need to pick dates and get it on the calendar – Madeline/Pat**

#### **MINISTER'S TRAVEL PLANS**

Submitted by Rev Janis

No travel in March. Rev Janis was and will be present for the guest speakers and guest musical artists, as she runs the zoom account. None anticipated in April. She continues her online training in Spiral Dynamics which began in February. Zoom training continuing so that others can run primary zoom account and she can take classes, or take a weekend (or a few days) off. Lots of zooming.

#### **MUSIC/SOUND**

Submitted by Rev Janis

Our CSLT Orchestra continues to impress with the way they make magic behind the scenes for our Sunday performance music, and with the quality of music they provide. We are so grateful for our music team.

During March, our opening congregational song was Ringo Starr's, "Anthem (of peace and love)". In April it will be a modified version of "I am a Radiant Light of God"

We've had excellent response from the musicians we contacted about performing live on zoom. Faith Rivera will be zooming in from Hawai'i on April 25<sup>th</sup>. Jan Garrett & JD Martin will zoom in on May 2<sup>nd</sup>. This one may not be retained on YouTube. The artists have requested the ability to have this be a live presentation only, if they are not happy with the way the recording sounds. On June 13th, Gary Lynn Floyd will zoom with us for music and message. What a treat!

**NEWCOMERS TEAM** Situation normal, until it wasn't.

Submitted by Marya

#### **PRACTITIONER CORE**

Submitted by Rev Janis

At present, Shelly Dunn conducts the bulk of the Sunday morning pre-service meditations and providing platform support twice a month, in addition to other behind the scene tasks. Practitioner student Maria Schuchardt leads Sunday Morning Meditation Practice once each month.

Shelly continues to host the 'alumni' Prosperity Plus III Alumni group meetings twice each month.

**YOUTH & FAMILY** Situation normal, until it wasn't.

Submitted by Marya

#### **VIDEOGRAPHY AND PHOTOGRAPHY**

Submitted by Madeline/Mariann Moery - Team Leader

We have begun discussions with a potential supplier of livestream equipment and expertise. The plan is when in-person returns to also retain access for those who do not wish face-to-face and for those who attend from outside Tucson. Until we meet in person, we will continue with our current Zoom service and YouTube recordings of Rev. Janis reminder and prayer.

**VISION CORE NOTES** initiated April 1, 6:30pm

Submitted by Rev Janis

Participating on zoom: Barbara McGill & Rev Janis Farmer

Participating independently: Carol Nigut

What is the highest vision, highest ideal for Center for Spiritual Living Tucson?

Constant turning over, especially of gratitudes, re-visioning everything; Mormon Tabernacle Choir singing the "Hallelujah Chorus", joy, expansion, fragrant flowers blooming; Unity, image of group of people smiling with joy and excitedly extending their arms to heaven; expectantly open and ready for all their good;

What changes, evolves, or becomes as this vision comes to pass?

How to know/realize immortality? Is it material, is it mental? Receive and open for guidance, CSLT as a center for guidance, universal GPS; Happy hands and hearts. Eagles singing "Peaceful Easy Feeling", old hymn "Marching to Zion"; A tremendous shift energy, from lethargy to invigorated engagement and excitement;

Is there anything else that wants to be known, realized or understood?

Knowing One/Substance & realizing immortality, the process of knowing how I recognize and experience it, feeling of struggle, how do I feel free?; Classic Italian 3-tiered fountain overflowing, light coming in a skylight; The time is NOW!;

**Center for Spiritual Living Tucson**  
Board Minutes & Reports  
**April 15, 2021**

**6 Finance/Stewardship Report**

**Rev Janis**

Executive Summary: March was a 4-Sunday month, again entirely online. Average attendance dropped a bit, even as the Board continues to vision for a growing Center.

The Board has agreed to sustain and hold the vision of increased attendance by individuals willing and able to participate (in all ways and on many levels), which allows us opportunities to expand our reach in Tucson.

	Total Sunday Offerings and P+	New Designated Monies*	Total Income	Total Expenses	Net Income	\$ per Weekly Attendee	Average Weekly Attendance
March	\$10,613	0	\$10,654	\$9,521	\$1,133	\$63.55	42+
February	\$9,351	0	\$10,256	\$8,692	\$1,564	\$51.66	45+
January	\$7,985	0	\$10,639	\$9,364	\$1,275	\$35.33	45+
December	\$15,158	\$7,000	\$15,845	\$9,472	\$6,372	\$84.21	45+

\*Presently we have a stand-alone Facility Fund, Scholarship Fund, a Practitioner Fund, an Opportunity Fund (incl. piano fund) and a Compassionate Heart fund. All are designated and are kept separated from Total Income or Total Expenses.

<b>Cash Balances</b>	<b>March</b>	<b>February</b>	<b>January</b>	<b>December</b>
Chase General Ops Checking	\$14,085	\$13,745	\$13,495	\$13,195
Vantage W. Gen Ops Checking	\$39,208	\$36,160	\$38,256 $\alpha$	\$35,276 $\alpha$
Vantage W. Additional Savings	\$10,002	\$10,001	\$10,001	\$10,001
Chase Education (Savings) Fund	0	0	0	0
Vantage W. Education Savings	\$13,039	\$13,038	\$12,118	\$9,777
Chase (Operating) Savings	0	0	0	0
VWCU Practitioners' Savings	\$412	\$412	\$412	\$412
Designated Holdings (Music)	0	0	0	0
<b>SubTotal</b>	<b>\$76,334</b>	<b>\$73,356</b>	<b>\$74,282</b>	<b>\$68,661</b>
Chase Opportunity Fund	0	0	0	0
Chase Facility Fund Savings	\$48,544	\$48,544	\$48,543	\$48,543
Vantage W. Facility Fund Savings	\$4,746	\$4,746	\$4,745	\$4,745
VWCU Imprmnt/Opportunity Fund*	\$23,332	\$23,311	\$23,303	\$23,291
Facility Fund Invest. Acct	0	0	0	0
<b>Total</b>	<b>\$152,956</b>	<b>\$149,957</b>	<b>\$150,873</b>	<b>\$145,240</b>

\* We received anonymous designated gifts, part of which is to be used for 'sustainable' marketing activities. We called this the Opportunity Fund. Out of this account we have funded the website upgrade & partially funded of our Office improvement fund.

$\alpha$  The Gregory School has declined to accept our rental payments since May because the school remains closed.

### Comparison between March 2020 and March 2021

Attendance/Sunday	INcreased by	2
Offerings/month	DEcreased by	\$ 154
Offerings/person/Sunday	INcreased by	\$ 10.09
Total Income	DEcreased by	\$ 1,152
Expenses	INcreased by	\$ 153
Net Income	DEcreased by	\$ 1,305

Online only since March 2020, attendance estimated. As of the end of March we have been online for 54 weeks for Sunday Services, classes, Mastermind groups, book studies, Vision Core and monthly Board of Trustees meetings.

### Status of the CSLT Facility Fund

Facility Fund Investment Acct Deposits: Initial Deposit \$50,000 (Nov12), Deposit \$10,236 (Mar13) Deposit \$15,188 (Dec13)  
 Investment Account closed December 2016 to purchase raw land at 4961 E. 22nd St. On June 3, 2019 we sold our raw land on 22nd St, and have agreed to serve as 'bank' for the buyer for five years with annual payments, on June 3 of each year.

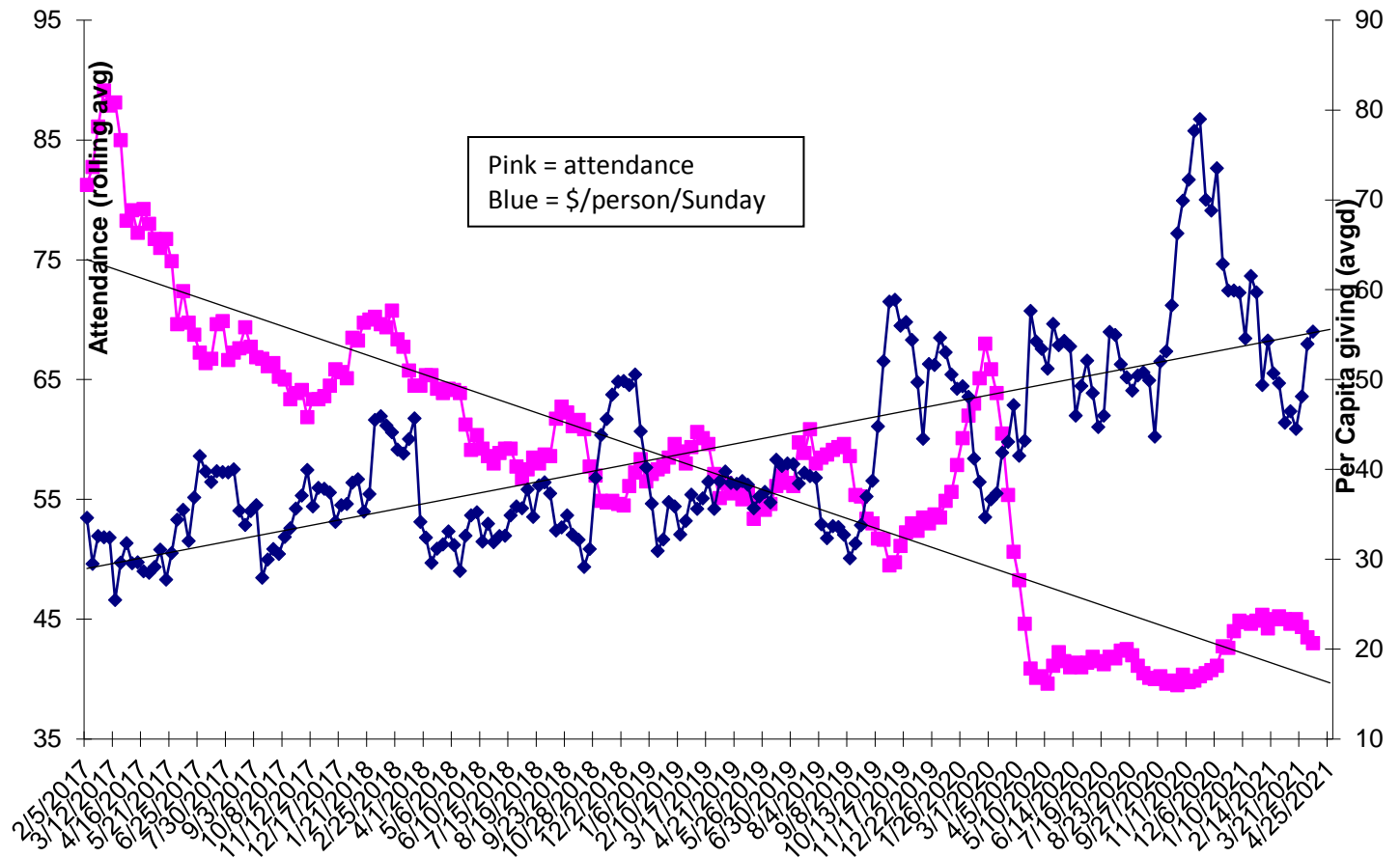
Date	CSLT Contributions	Various Projects & Interest	Personal Donations	\$ Total
Year End 2009				29,365
Year End 2010				48,710
Year End 2011				70,361
Year End 2012	6,800	1,045	1,430	79,636
Matching Fund Reserves			2,900	82,536
Year End 2013 (Inspection)	<1,800>	4,780	3,327	88,843
Year End 2014	<600>	1,789	25,884	115,936
Year End 2015 (Moved to River Rd)	<5,223>	<1,786>	7,109	116,027
Year End 2016 (Purchased land)	<102,024>	2,068	2,440	18,511
Year End 2017 (InvAcctClosed.)		164	1,500	20,175
Year End 2018		112	1,000	21,287
Year End 2019 (sold land & bought office)	(net) <17,146> <sup>Ⓔ</sup>		200	4,341
Year End 2020		47,479 ☺ +3	25	53,288
January 2021				53,288
February 2021		2		53,290
March 2021				53290

<sup>Ⓔ</sup> Facility Fund expenses to relocate to our Education Center have been completed (for now). In total we spent \$59,330.32 for the down payment and the repairs required to meet the requirements of our mortgage holder. A detailed breakdown of expenditures was presented in the January 16th Board minutes. We paid \$1,440 of capital expenses from General Operations during the move.

☺ The annual payment on the sale of the 22<sup>nd</sup> St property initiated in 2019.

### Budget and Actuals for First Quarter Presented Separately

### Attendance and Per-Person Giving Over Time



**Range Report for 1st Quarter 2021 (with previous quarters for comparison)**

Donations/ Quarter	1Q2021		4Q2020		3Q2020		2Q2020		1Q2020	
	All	Extnd Ldrs	All	Extnd Ldrs	All	Extnd Ldrs	All	Extnd Ldrs	All	Extnd Ldrs
>\$2,000	3	2	6	3	2	1	2	1	3	0
\$1,500-1,999	3	1	2	0	4	2	2	1	3	2
\$1,000-1,499	1	0	6	2	3	1	5	1	1	1
\$750-999	2	1	2	1	4	3	2	1	4	2
\$500-749	11	5	14	5	9	2	7	3	8	4
\$250-499	11	4	8	2	8	2	8	4	13	5
\$100-249	13	3	11	3	12	5	15	4	14	2
\$1-99	3	0	3	0	11	1	6	1	20	1
0 or UnID'd	?	4	?	4	?	3	?	3	?	3
<b>Total Number</b>	<b>47+</b>	<b>20</b>	<b>52+</b>	<b>20</b>	<b>53+</b>	<b>20</b>	<b>47+</b>	<b>19</b>	<b>66+</b>	<b>20</b>

For the 1<sup>st</sup> quarter 2021, the bright line ((20% of the contributors donated 80% of the income) was \$500 and included 8 leaders out of 20 contributors. Our 4<sup>th</sup> quarter of being entirely online.

For the 4<sup>th</sup> quarter 2020, the bright line was \$600 and included 10 leaders out of 26 contributors. Our third quarter of being entirely online.

For the 3<sup>rd</sup> quarter 2020, the bright line was \$540 and included 9 leaders out of 20 contributors. Our second quarter of being entirely online.

For the 2<sup>nd</sup> quarter 2020, the bright line was \$450 and included 8 leaders out of 21 contributors. Our first quarter of being entirely online.

For the 1<sup>st</sup> quarter 2020, the 'bright line' was \$450 and included 10 leaders out of 21 contributors.