



**Board of Trustees  
Minutes from  
March 18, 2021 Meeting**

1	Call to Order and Evocation	Pg 2	Maria/Rev Janis	5 min
2	Visioning		Rev Janis	15 min
3	Checking In		All	5 min
4	Last Month's Minutes		Done	0 min
5	Call to Audience		Maria	1 min
6	Finance/Stewardship Report	Pgs 9-11	Rev Janis	10 min
	Discussion of current fiscal status			
7	Review Current Business Items	Pg 2		
	911 S. Craycroft update		Rev Janis	1 min
	AZ Corporation Commission Filing Complete (2020)			
8a-h	Review Current Activities	Pgs 2-3	All	15 min
	(incl. questions raised or deferred at last Board meeting)			
9	The 2020-2021 Planning Cycle	Pg 3		
	Planning Meeting Needed?		All	2 min
	Next Board meeting April 15, 2021 at 5:30pm (zoom)		All	0 min
	Upcoming Guest Speakers		Rev Janis	1 min
10	New Business for This Meeting?	Pg 4	All	5 min
11	New Business for Next/Future Meeting?	Pg 4	All	2 min
12	Sunday's Gratitudes	Pg 4	All	5 min
13	Review CIAB Schedule	On hiatus	All	0 min
14	Lead Newsletter Articles	Pg 4	All	1 min
15	Six Month Look Ahead on Calendar	Pgs 5-6	All	5 min
16	Team Reports	Pgs 6-9	All	2 min
	Adjourn and Pray out		Rev. Janis	

Present: Maria Schuchardt, Marya Wheeler, Janie Hooper, Madeline Pallanes, Rev Janis Farmer

Absent: no one

In Service: Maria Schuchardt (Running the meeting), Rev Janis (Scribe, high watch, visioning)

Guests: none

Center for Spiritual Living Tucson  
Board Minutes from March 18, 2021

1 Call to Order/Evocation 5:33pm

Maria/Rev Janis

**2 Visioning**

**Q: What is the Highest Vision or Highest Ideal for Center for Spiritual Living Tucson?**

A: Hot air balloons against a green landscape; 2001 Space odyssey song, especially the tympani, at gorgeous sunrise, brightness, glory, delight; Big trees. Sounds of birds; Big blue sky, very white clouds. Lots of energy spiraling around us. Flower petals; Heavenly harp & harpist against a Hubble picture background

**Q: What changes, evolves, or becomes as this highest vision comes into existence?**

A: Song: "What the world needs now is love sweet love"; Songs: Jimmy Buffett's "I Love The Now" and Seals and Crofts "Summer Breeze (Makes Me Feel Fine)"; Walking path; Our building has glass ceilings and we can see clouds and sky through them; Big red canvas tennis shoes (a line of shoes) walking on the yellow brick road

**Q: Is there anything else that wants to be known, understood, or realized? What else?**

A: Zebras, Happy Smiling Faces, Sunflowers; Lots of money flowing and blowing; Love among all of us is felt; Yellow flowers cinched in the middle, daffodils

<b>3 Checking In (briefly, please)</b>		All
<b>4 Last Month's Minutes</b>		Done
<b>5 Call to Audience</b> (no audience, none)		Maria
<b>6 Financial/Stewardship Report</b> We continue to slowly grow. All is well.		Rev Janis
<b>6a Current Financial Reporting</b>	Report attached as pages 9-11	
<b>7 Current Business Items</b>		Rev Janis
<b>7a 911 S Craycroft facilities update</b>	Nothing to report	
<b>8 Review of Current Activities</b>		
<b>8a Education</b>	A flurry of classes continue. Full report, below.	Rev Janis
<b>8b Youth</b>	Nothing at this time	Marya
<b>8c Board Liaisons</b>	Were you able to contact any of your team leaders or team members (that you haven't heard from or seen in the last 6 months)? Not this month.	All
<b>8d Community &amp; Growth</b>		
<b>2021 Credo:</b> CSLT inspires spiritual expression in community with all and offers an accepting, loving, and peaceful way of living a joyful, healthier, and more abundant life. (We kept the 2020 Credo.)		
<b>CSLT Community Presence:</b> The recordings of our online Service continue to be viewed on YouTube. During January there were 120 views for 15.2 hours and 50 total subscribers (increase of 4). The two videos most watched were our guest presenter Dr Karmen Smith on February 14, followed by our normal service on February 21st. 14% of our watchers came through our Facebook page, and 7% came from YouTube recommending our content.		
<b>Newsletter Statistics:</b> Four newsletters were sent during February to between 553-557 subscribers. Between 191-225 people (35-41%) opened them, and 27-33% of those who opened them clicked on something. We continue with very good engagement in our electronic newsletter communication.		
<b>Morning Meditation,</b> In our Sunday Zoom Room, regularly has 6-13 individuals participating from all over North America. (Average attendance, 11 persons each day) Total participation continues to drop off in		

<p>February (267) from January (361), and from a record high 373 in December. Part of the drop off may be that some regulars have chosen to shift to New Vision Center's morning meditation (7-7:15am). Bev Holland RScP from CSLTacom and Maria Schuchardt have taken over the Morning meditation on Tuesdays for a few months so Rev Janis can take a Spiral Dynamics class with a group in Europe.</p>	
<p><b>8e Covid 19</b> The Center's response: Until something substantive changes, we remain fully online. The Gregory School has been entirely online since Christmas Break, and as of March 8 is beginning hybrid classes again. The school remains closed to 'renters', which is what they consider us. Home Office conducted a "Welcome Back Summit" last week, sharing information, thoughts and ideas that Centers may wish to consider as they/we begin to re-open. Rev Janis to share presentation with board members for their viewing pleasure.</p>	
<p><b>8f Small Groups</b></p>	
<p>The men's group meets online 1st &amp; 3rd Thursdays for breakfast, with 6-8 attending.</p>	
<p>Prosperity+ Alums, with 5-8 attending meets online, 1<sup>st</sup> and 3<sup>rd</sup> Sundays 1-2pm in our second zoom room. New graduates invited to participate.</p>	
<p>Keith Gorley intends to begin a new book study discussion group on Karen Armstrong's <i>Twelve Steps to a Compassionate Life</i>, which will begin Friday March 19 from 4-5:30pm (in Keith's zoom room).</p>	
<p>Janet Salese has established the Full Moon Labyrinth Walk as a regular activity for which we advertise and encourage participation of those persons interested. Next walk March 28<sup>th</sup> @ 7:30pm. Janet requests those who participate to please bring a mask.</p>	
<p>Janet also initiated a Movie Discussion Group on the 3<sup>rd</sup> Sunday following the Prosperity Plus Mastermind group in our second zoom room. The first meeting was February 21 at 2:30pm with 4 attending. The first movie discussed was "Eat Pray Love". In March, on the 21<sup>st</sup>, the movie will be "Conversations with God", available on YouTube.</p>	
<p>Zoom potluck began in February. Gregg Molzon &amp; Marsha Merten hosted. (10-11 attended). Suggestion to add a breakout room for spiritual discussion, rather than 'just' socializing, beginning with the March potluck. In March, 7 attended. No discussion group formed, yet.</p>	
<p>Two facilitators have stepped forward to lead the home study book groups on Julia Cameron's <i>The Prosperous Heart</i> beginning mid-April (18<sup>th</sup> &amp; 19<sup>th</sup>). One has chosen to meet Sunday afternoons 2-4 and the other Mondays 4-5:30pm. Both will start out as 6 weeks, but will extend the course as the students find necessary. Both will use our zoom rooms. A third facilitator has offered the potential for an in-person gathering at her home for those individuals who have been vaccinated + 2 weeks.</p>	
<p><b>8g New Places We Might Advertise? – Madeline</b></p> <p>Coffee News - Defer on advertising in Coffee News until we are back together in person. Consider whether we'd like to focus on the University area and the East area, because those two areas contain the most University students, and Davis-Monthan personnel, two groups we've thought we'd be good fits with. Additionally, the east distribution region is closest to where we meet in person. Madeline reported that design work is \$38 extra, on top of fees. No additional action on this topic needed until we are reconvening.</p>	
<p><b>8h Possible New Educational Offering for Our Community and Guests – Marya</b></p> <p>Topic: Race and Identity. Speaker Ashley LaRussa (<a href="https://rouxeventsllc.com/our-story/">https://rouxeventsllc.com/our-story/</a>), April 17, 1pm. We continue to move forward on this event. Ashley prefers to host it in her zoom room. Pre-registration will be required. We move ahead, paying the facilitator fee on 3/17 and inviting Maria's Practitioner One (online only) class and interested attendees from Unity of Peace.</p>	
<p><b>9 2020-2021 Planning Cycle</b></p>	
<b>9a Planning Mtg</b>	Do we need one? Not at this time.
<b>9b Board Mtg</b>	Board will continue to meet online: next meeting: April 15, 2021 at 5:30 pm

<b>9c Guest Speakers</b>	<ul style="list-style-type: none"> <li>• Singer/songwriter Robin Hackett, March 21 (robinhackettmusic.com) for message and music. Maria advertised in Caliente (AZ Daily Star) and Tucson Weekly. Event loaded in Natural Awakenings &amp; on our Facebook page.</li> <li>• Singer/songwriter Faith Rivera, April 25 (faithrivera.com) for message &amp; music.</li> <li>• Jan Garrett &amp; JD Martin have agreed to speak/sing May 2nd</li> <li>• Gary Lynn Floyd has agreed to speak/sing on June 13th</li> </ul>
<b>10 New Business for This Meeting??</b>	Not new business, but an interesting tidbit. Madeline reported that an online class she is taking at CSL Reno has suggested to the students that they notice their own unexpected income, and tithed on it to a repair/improvement project at the CSL Reno facility. Unexpected income is uniquely defined as monies that the individual expected to spend, and didn't.
<b>Tabled Items</b>	Next steps for Consolidated Community Campus: Further discussion of this item is tabled until Center and community growth clarifies our needs.
	Small group Requirements - Further discussion of this topic tabled for now.
	Paid Administrative support in the office, deferred until building open
	Idea parked until after we return to meeting in person: Creation (or Reviving) of a CSLT Business Directory for those who wish to advertise their services to each other.
	Moving Coffee News advertising to Tabled Items, pending our return to TGS.
<b>11 New Business Items for Next Meeting ?</b>	Nothing at this time

## 12 Sunday Gratuities

Date	Honoree
3/14	Those who attended our zoom potlucks (in February and March, & Gregg & Marsha who hosted)
3/21	(Robin speaking) Those who attended our Movie Discussion Group (and Janet, who hosted)
3/28	Hosts
4/4	B'days & significant anniversaries
4/11	Instructors of classes, including small group book study leaders
4/17	Music Team

## 13 CIAB Schedule Gregory School contact: Mary Babbitt 520 243-3222

To be scheduled when we return to The Gregory.

## 14 Newsletter Articles

### Due Who is writing

3/14 Janie

3/21 ~~Marya~~ Rev Janis (Marya asked to be excused from writing because it is tax season)

3/28 Maria

4/4 Madeline

4/11 Rev Janis

4/17 Janie

Rotation: Rev. Janis → Janie → Marya → Maria → Madeline

## 15 Six Month Calendar Review Pages 4-6

2020-2021 Board Liaison responsibilities: –

**Rev. J:** Sunday: Practitioner Core, Education, Admin, Ops, Interim Treasurer

**Maria:** Chair, Trustees, Hospitality

**Marya:** Vice-Chair, Youth Program, Newcomers, Hosts

**Janie:** Secretary, Greeters, Gratitude Banquet, Altared States, Cinema, Bookstore

**Madeline:** Marcomm, Outreach, Video, Photography, Membership,

**Adjourn and Pray Out 6:32pm**

**Six Month Calendar (Look Ahead!)**

March 2021						
Sunday	Monday	Tuesday	Wednesday	Thursday	Friday	Saturday
28	<b>March 1</b> Roots	2	3 Foundations (5:30-7:30pm)	4 Men's Group 9 Vision Core 6:30pm	5	6
7 Prosperity+ Alums 1-2pm	8 Roots	9	10 Foundat's 5:30-7:30pm	11	12	13
14	15 Roots	16	17 Foundat's 5:30-7:30pm	18 Men's Group 9 Board Meeting, 5:30pm	19 Compass. Life (KG) 4p	20 Found Meditation Wkshop
21 Robin Hackett spkg, Prosperity+ Alums 1-2pm Movies 2:30p	22 Roots	23	24 Foundat's 5:30-7:30pm	25	26 Compass. Life (KG) 4- 5:30pm	27
28	29 Roots	30	31 Foundat's (5:30-7:30pm)	<b>APR 1</b> Men's Gp 9 Vision Core 6:30pm	2 Compass. Life (KG) 4p	3
April 2021						
Sunday	Monday	Tuesday	Wednesday	Thursday	Friday	Saturday
4 Prosperity+ Alums 1-2pm	5 Roots ends 5:30-7:30pm	6	7 Foundations ends 5:30- 7:30pm	8	9 Compass. Life (KG) 4- 5:30pm	10
11	12	13	14	15 Men's Group 9 Board Meeting 5:30p	16 Compass. Life (KG) 4- 5:30pm	17 DEI event 1pm zoom
Three facilitators have agreed to start <i>The Prosperous Heart</i> book studies in mid- and late-April						
18 Prosperity+ Alums 1-2pm Movies 2:30p	19	20	21	22	23 Compass. Life (KG) 4- 5:30pm	24
25 Faith Rivera spkg & singing	26	27	28	29	30 Compass. Life (KG) 4- 5:30pm	<b>MAY 1</b>
May 2021						
Sunday	Monday	Tuesday	Wednesday	Thursday	Friday	Saturday

2 Prosperity+ Alums 1-2pm Jan Garrett & JD Martin	3	4	4	6 Men's Gp 9a Vision Core 6:30p	7 Compass. Life (KG) 4-5:30pm	8
9	10	11	12	13	14 Compass. Life (KG) 4-5:30pm	15
16 Prosperity+ Alums 1-2pm Movies 2:30p	17	18	19 Visioning 6-8pm	20 Men's Group 9 Board Meeting 5:30pm	21 Compass. Life (KG) 4-5:30pm	22
23	24	25	26 Visioning 6-8pm	27	28 Compass. Life (KG) 4-5:30pm	29
<b>June 2021</b>						
30	31	<b>JUNE 1</b>	2 Visioning 6-8pm	3 Men's Gp 9a Vision Core 6:30pm	4 Compass. Life (KG) 4-5:30pm	5
6 Prosperity+ Alums 1-2pm	7	8	9 Visioning 6-8pm	10	11	12
13 Gary Lynn Floyd spkg& singing	14	15	16 Visioning 6-8pm	17 Men's Group 9 Board Meeting 5:30pm	18	19
20 Prosperity+ Alums 1-2pm Movies 2:30p	21	22	23 Visioning 6-8pm	24	25	26
27	28	29	30 Visioning 6-8pm	<b>JULY 1</b> Men's Gp 9a Vision Core 6:30pm	2	3
<b>July 2021</b>						
4 Prosperity+ Alums 1-2pm	5	6	7 Visioning 6-8pm	8	9	10
11	12	13	14	15 Men's Group 9 Board Mtg 5:30p	16	17
18 Prosperity+ Alums 1-2pm Movie Gp 2:30p	19	20	21	22	23	24
25	26	27	28	29	30	31
<b>August 2021</b>						
1 Prosperity+ Alums 1-2pm	2	3	4	5	6	7
8	9	10	11	12	13	14
15 Prosperity+ Alums 1-2pm Movie Gp 2:30p	16	17	18	19 Men's Group 9 Board Mtg 5:30p	20	21

22	23	24	25	26	27	28
----	----	----	----	----	----	----

**CSLT Board Minutes – March 18, 2021**  
**Team Reports for February 2021**

**ADMINISTRATION**

Submitted by Rev. Janis

All non-essential activities continue being deferred until ‘afterwards’ (whatever that means.) Mariann retains the uploading ‘stuff’ to the website. Our webmaster, Graeme tidies up errors we find and keeps our web presence looking sharp. Maria S. uploads the online calendar & blog, and makes the Sacred Cinema bulletin insert (when we have Cinema, in person). Thank you Maria! The newsletter provider, Constant Contact eliminated our legacy template the end of February, so we got to design and create a new newsletter template during February. With substantial assistance from the Constant Contact helpdesk, the job was completed. Kim, our new bookkeeper, continues to delight us with her competence. Our contact at the school has informed us that they are not allowing renters to return. We remain entirely online.

**ALTARED STATES**

Submitted by Janie

We could still use one more person when we re-convene in person.

**BOOKSTORE**

Submitted by Janie

On hiatus until "afterwards." Books and The Science of Mind magazines are available to purchase and either pick-up or mailing. Don't forget you can choose us as your Amazon Smile charity!

**CINEMA**

Submitted by Janie

Movie discussion group began February 21<sup>st</sup>. Janet Salese hosted. Four persons attended to discuss “Eat, Pray, Love”. The movie for March 21<sup>st</sup> will be “Conversations with God.”

**COMPASSIONATE CARE**

Submitted by Rev Janis

Some meal, care and transportation services continue to be provided in very specific cases.

**ECCLESIASTICAL CORE**

Submitted by Rev Janis

Shelly Dunn continues to do the bulk of the online Sunday morning meditations. Practitioner student Maria Schuchardt now leads one Sunday Morning Meditation each month. We continued online Sunday services (through zoom). A diversity of regulars and new people keep appearing, and we get better at doing it, and individuals get more comfortable in the stay-home-isolation-mode of doing Sunday services. Rev Janis continues the morning daily practice (on zoom). In February there were 267 individual points of contact and 24 group affirmative prayers. On average we had 11 persons participating daily during February. We've been entirely online for almost a year. Bev Holland RScP (CSL Tacoma) has assisted when Rev Janis had to be elsewhere, and will facilitate the morning gatherings on Tuesdays during February & March while Rev Janis is taking a non-CSL zoom class. We remain grateful that zoom allows us to operate so easily at a distance.

**EDUCATION CORE**

Submitted by Rev Janis

The certificated class “Roots of the Science of Mind” continues with 10 participants “Foundations of the Science of Mind” continues with 5 participants. Saturday meditation workshop has been scheduled for March 20. Keith Gorley’s next book study on Karen Armstrong’s *Twelve Steps to a Compassionate Life* begins Friday March 19, 4-5:30pm. We are exploring the possibility of a certificated Visioning class being offered on Wednesday evenings this summer (mid-May – early July) by a ministerial student from CSL Reno, if at least 6 participants are interested.

**FACILITIES TEAM** Report is included as agenda item.

Submitted by Rev Janis

**FUNDING TEAM** Reported as agenda items. Submitted by Rev Janis

**GREETERS** Situation normal, until it wasn't. Submitted by Janie

**HOSPITALITY TEAM** Zoom potluck owned at Community Envisioning. Began in February. Submitted by Maria

**HOST TEAM** Hosts participate in the online services. Submitted by Marya

**MARKETING AND COMMUNICATIONS TEAM/OUTREACH** Submitted by Madeline

Promotions were written and distributed for the 2/14 return of Dr. Karmen Smith, and preparing for Robin Hackett's visit on March 21<sup>st</sup>. Updated Yelp page.

**MEMBERSHIP** Submitted by Madeline

Membership class being planned. Pat adjusting the curriculum for the 2<sup>nd</sup> week.

**Need to pick dates and get it on the calendar – Madeline/Pat**

**MINISTER'S TRAVEL PLANS** Submitted by Rev Janis

No travel in February. Rev Janis was and will be present for the guest speakers and guest musical artists, as she runs the zoom account. None anticipated in March. She has begun taking an online training in Spiral Dynamics beginning in February. Zoom training continuing so that others can run primary zoom account and she can take classes, or take a weekend (or a few days) off. Lots of zooming.

**MUSIC/SOUND** Submitted by Rev Janis

Our CSLT Orchestra continues to impress with the way they make magic behind the scenes for our Sunday performance music, and with the quality of music they provide. We are so grateful for our music team. During February, our opening congregational song was "In The Name of Love" by Gary Lynn Floyd and Jami Lula. In March, it will be Ringo Starr's, "Anthem (of peace and love)" We've had excellent response from the musicians we contacted about performing live on zoom. Faith Rivera will be zooming in from Hawai'i on April 25<sup>th</sup>. Jan Garrett & JD Martin will zoom in on May 2<sup>nd</sup>. This one may not be retained on YouTube. The artists have requested the ability to have this be a live presentation only, if they are not happy with the way the recording sounds. On June 13th, Gary Lynn Floyd will zoom with us for music and message. What a treat!

**NEWCOMERS TEAM** Situation normal, until it wasn't. Submitted by Marya

**PRACTITIONER CORE** Submitted by Rev Janis

At present, Shelly Dunn conducts the bulk of the Sunday morning pre-service meditations and providing platform support twice a month, in addition to other behind the scene tasks. Practitioner student Maria Schuchardt leads Sunday Morning Meditation Practice once each month. Shelly continues to host the 'alumni' Prosperity Plus III Alumni group meetings twice each month.

**YOUTH & FAMILY** Situation normal, until it wasn't. Submitted by Marya

Discussion about online youth program in the body of the agenda

**VIDEOGRAPHY AND PHOTOGRAPHY** Submitted by Madeline/Mariann Moery - Team Leader

The work to develop a video/livestream program continues. We proceed to research and discussion. Until we meet in person, we will continue with our current Zoom service(s) and YouTube recordings of Rev Janis' reminder and prayer.

Still meeting virtually, so few photography opportunities.

**VISION CORE NOTES** initiated March 4, 6:30pm Submitted by Rev Janis

Participating on zoom: Marya Wheeler, Chris Wheeler, Madeline Pallanes & Rev Janis Farmer



Participating independently: Carol Nigut

What is the highest vision, highest ideal for Center for Spiritual Living Tucson?

A bowl of beautiful yellow lemons; Army people (soldiers) transmuted to a joyful circus (like on WandaVision, on DisneyPlus); Felt feeling of a healing vibration/resonance/frequencies, a sympathetic vibration; Large bonfire on a distant hill, great huge light, open arms, beautiful sweet-smelling flowers in lots of colors; Image of a large group of smiling people celebrating with arms in the air, heart's bursting with joy. Together again in unity, relief, and peace.

What changes, evolves, or becomes as this vision comes to pass?

Scent of rain; Luxurious futons on the ground, bouquets of red flowers tied with ribbon in the middle (like a designer would do); impressions of water in human form; nothing, smiles and laughter, a loud voice full of expression shouting, "It's Easy!"; New life, like sprouts emerging in the spring. Appreciation for each other's presence leads to renewal of conscious intention-setting and priorities.

Is there anything else that wants to be known, realized or understood?

Lots of traffic on Craycroft in front of the office; Image of the famous statue of David rising out of the mist, the Pope visiting the middle east; Silence; Helping hands and minds, a production company; Post Covid is a new world and we will be new people with new ideas, desires, and a new appreciation for what is ours to do.

**Center for Spiritual Living Tucson**  
Board Minutes & Reports  
**March 18, 2021**

**6 Finance/Stewardship Report**

**Rev Janis**

Executive Summary: February was a 4-Sunday month, again entirely online. Average attendance increased slightly as the Board's vision for a growing Center starts to manifest.

The Board has agreed to sustain and hold the vision of increased attendance by individuals willing and able to participate (in all ways and on many levels), which allows us opportunities to expand our reach in Tucson.

	Total Sunday Offerings and P+	New Designated Monies*	Total Income	Total Expenses	Net Income	\$ per Weekly Attendee	Average Weekly Attendance
February	\$9,351	0	\$10,256	\$8,692	\$1,564	\$51.66	45+
January	\$7,985	0	\$10,639	\$9,364	\$1,275	\$35.33	45+
December	\$15,158	\$7,000	\$15,845	\$9,472	\$6,372	\$84.21	45+
November	\$10,509	0	\$ 10,837	\$7,426	\$3,411	\$51.51	41+

\*Presently we have a stand-alone Facility Fund, Scholarship Fund, a Practitioner Fund, an Opportunity Fund (incl. piano fund) and a Compassionate Heart fund. All are designated and are kept separated from Total Income or Total Expenses.

<b>Cash Balances</b>	<b>February</b>	<b>January</b>	<b>December</b>	<b>November</b>
Chase General Ops Checking	\$13,745	\$13,495	\$13,195	\$12,543
Vantage W. Gen Ops Checking	\$36,160	\$38,256 $\alpha$	\$35,276 $\alpha$	\$31,811 $\alpha$
Vantage W. Additional Savings	\$10,001	\$10,001	\$10,001	\$10,000
Chase Education (Savings) Fund	0	0	0	0
Vantage W. Education Savings	\$13,038	\$12,118	\$9,777	\$9,772
Chase (Operating) Savings	0	0	0	0
VWCU Practitioners' Savings	\$412	\$412	\$412	\$412
Designated Holdings (Music)	0	0	0	0
<b>SubTotal</b>	<b>\$73,356</b>	<b>\$74,282</b>	<b>\$68,661</b>	<b>\$64,538</b>

Chase Opportunity Fund	0	0	0	0
Chase Facility Fund Savings	\$48,544	\$48,543	\$48,543	\$48,543
Vantage W. Facility Fund Savings	\$4,746	\$4,745	\$4,745	\$4,745
VWCU Imprmnt/Opportunity Fund*	\$23,311	\$23,303	\$23,291	\$16,280
Facility Fund Invest. Acct	0	0	0	0
<b>Total</b>	<b>\$149,957</b>	<b>\$150,873</b>	<b>\$145,240</b>	<b>\$134,106</b>

\* We received anonymous designated gifts, part of which is to be used for 'sustainable' marketing activities. We called this the Opportunity Fund. Out of this account we have funded the website upgrade & partially funded of our Office improvement fund.

α The Gregory School has declined to accept our rental payments since May because the school remains closed.

### Comparison between February 2020 and February 2021

Attendance/Sunday	DEcreased by	25
Offerings/month	DEcreased by	\$ 3,007
Offerings/person/Sunday	INcreased by	\$ 7.41
Total Income	DEcreased by	\$ 3,087
Expenses	DEcreased by	\$ 768
Net Income	DEcreased by	\$ 2,319*

Online only since March 2020, attendance estimated. As of the end of Jan we have been online for 51 weeks for Sunday Services, classes, Mastermind groups, book studies, Vision Core and monthly Board of Trustees meetings.

### Status of the CSLT Facility Fund

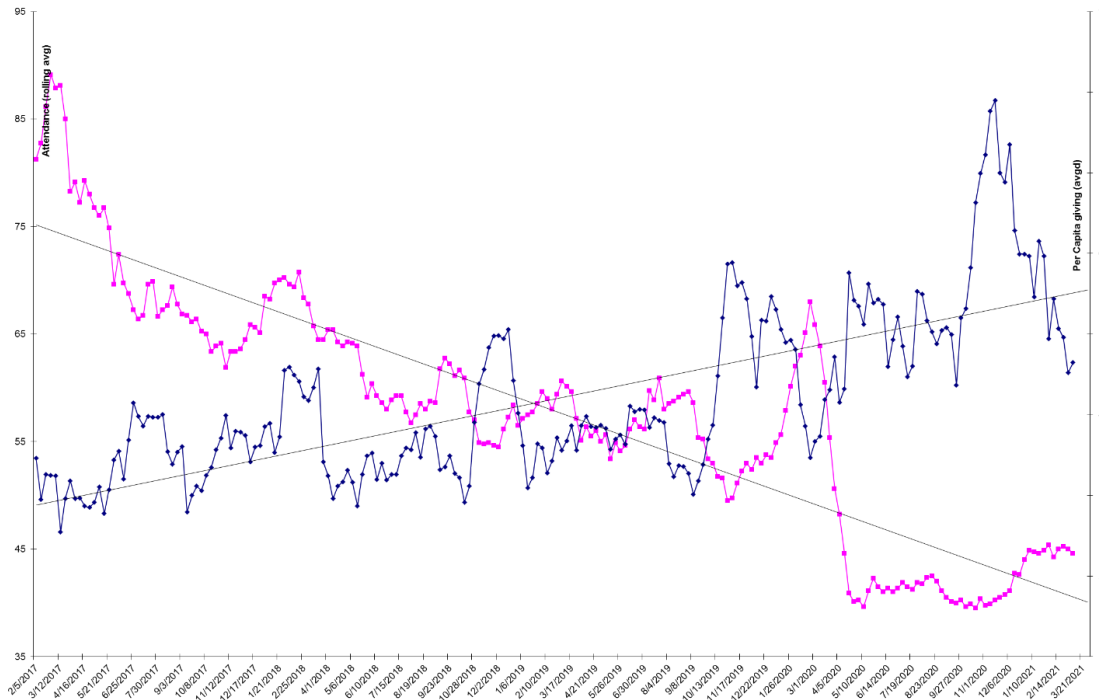
Facility Fund Investment Acct Deposits: Initial Deposit \$50,000 (Nov12), Deposit \$10,236 (Mar13) Deposit \$15,188 (Dec13)  
Investment Account closed December 2016 to purchase raw land at 4961 E. 22nd St. On June 3, 2019 we sold our raw land on 22nd St, and have agreed to serve as 'bank' for the buyer for five years with annual payments, on June 3 of each year.

Date	CSLT Contributions	Various Projects & Interest	Personal Donations	\$ Total
Year End 2009				29,365
Year End 2010				48,710
Year End 2011				70,361
Year End 2012	6,800	1,045	1,430	79,636
Matching Fund Reserves			2,900	82,536
Year End 2013 (Inspection)	<1,800>	4,780	3,327	88,843
Year End 2014	<600>	1,789	25,884	115,936
Year End 2015 (Moved to River Rd)	<5,223>	<1,786>	7,109	116,027
Year End 2016 (Purchased land)	<102,024>	2,068	2,440	18,511
Year End 2017 (InvAcctClosed.)		164	1,500	20,175
Year End 2018		112	1,000	21,287
Year End 2019 (sold land & bought office)	(net) <17,146> <sup>β</sup>		200	4,341
Year End 2020		47,479 ☺ +3	25	53,288
January 2021				53,288
February 2021		2		53,290

<sup>β</sup> Facility Fund expenses to relocate to our Education Center have been completed (for now). In total we spent \$59,330.32 for the down payment and the repairs required to meet the requirements of our mortgage holder. A detailed breakdown of expenditures was presented in the January 16th Board minutes. We paid \$1,440 of capital expenses from General Operations during the move.

☺ The annual payment on the sale of the 22<sup>nd</sup> St property initiated in 2019.

### Attendance and Per-Person Giving Over Time



	Jan 2021		Feb 2021		Total	
	Actual	Budget	Actual	Budget	Actual	Budget
<b>Income</b>						
<b>40100 Contributions</b>						
<b>40101 Sunday Offerings</b>	4,576.67	9,500.00	5,314.06	8,000.00	9,890.73	17,500.00
<b>40110 Online Contri</b>	3,408.47	2,000.00	4,036.60	2,000.00	7,445.07	4,000.00
<b>Total 40100 Contributions</b>	<b>\$ 7,985.14</b>	<b>\$ 11,500.00</b>	<b>\$ 9,350.66</b>	<b>\$ 10,000.00</b>	<b>\$ 17,335.80</b>	<b>\$ 21,500.00</b>
<b>Total Income</b>	<b>\$ 8,000.81</b>	<b>\$ 11,540.00</b>	<b>\$ 9,380.89</b>	<b>\$ 10,040.00</b>	<b>\$ 17,381.70</b>	<b>\$ 21,580.00</b>
<b>Expenses</b>						
<b>Total 00 ADMINISTRATION</b>	<b>\$ 2,931.56</b>	<b>\$ 5,026.00</b>	<b>\$ 3,033.59</b>	<b>\$ 4,806.00</b>	<b>\$ 5,965.15</b>	<b>\$ 9,832.00</b>
<b>Total 02 MINISTER COMPENSATION</b>	<b>\$ 2,070.00</b>	<b>\$ 2,070.00</b>	<b>\$ 2,070.00</b>	<b>\$ 2,070.00</b>	<b>\$ 4,140.00</b>	<b>\$ 4,140.00</b>
<b>Total 03 MUSIC EXPENSE</b>	<b>\$ 1,850.00</b>	<b>\$ 2,142.00</b>	<b>\$ 1,700.00</b>	<b>\$ 2,052.00</b>	<b>\$ 3,550.00</b>	<b>\$ 4,194.00</b>
<b>Total 04 MINISTRY EXPENSE</b>	<b>\$ 0.00</b>	<b>\$ 40.00</b>	<b>\$ 0.00</b>	<b>\$ 1,090.00</b>	<b>\$ 0.00</b>	<b>\$ 1,130.00</b>
<b>Total 05 SUNDAY SERVICE EXP</b>	<b>\$ 200.00</b>	<b>\$ 310.00</b>	<b>\$ 350.00</b>	<b>\$ 460.00</b>	<b>\$ 550.00</b>	<b>\$ 770.00</b>
<b>06 TITHING / CHARITABLE GIVING</b>						
66001 CSL	798.51	1,150.00	935.07	1,000.00	1,733.58	2,150.00
66002 Charitable Giving (OPCS)	399.26	575.00	467.53	500.00	866.79	1,075.00
<b>Total 06 TITHING / CHARITABLE GIVING</b>	<b>\$ 1,197.77</b>	<b>\$ 1,725.00</b>	<b>\$ 1,402.60</b>	<b>\$ 1,500.00</b>	<b>\$ 2,600.37</b>	<b>\$ 3,225.00</b>
<b>Total 07 LEADERSHIP DEVELOPMENT EXP</b>	<b>\$ 0.00</b>	<b>\$ 1,500.00</b>	<b>\$ 0.00</b>	<b>\$ 0.00</b>	<b>\$ 0.00</b>	<b>\$ 1,500.00</b>
<b>Total Expenses</b>	<b>\$ 8,249.33</b>	<b>\$ 12,813.00</b>	<b>\$ 8,556.19</b>	<b>\$ 11,978.00</b>	<b>\$ 16,805.52</b>	<b>\$ 24,791.00</b>
<b>Net Operating Income</b>	<b>-\$ 248.52</b>	<b>-\$ 1,273.00</b>	<b>\$ 824.70</b>	<b>-\$ 1,938.00</b>	<b>\$ 576.18</b>	<b>-\$ 3,211.00</b>
<b>Other Income</b>						
<b>Total 81000 EDUCATION REV</b>	<b>\$ 2,360.00</b>	<b>\$ 360.00</b>	<b>\$ 680.00</b>	<b>\$ 360.00</b>	<b>\$ 3,040.00</b>	<b>\$ 720.00</b>
<b>Total 85000 Bookstore Revenue</b>	<b>\$ 241.95</b>	<b>\$ 50.00</b>	<b>\$ 59.00</b>	<b>\$ 50.00</b>	<b>\$ 300.95</b>	<b>\$ 100.00</b>
<b>Total 86000 FACILITY FUND REVENUE</b>	<b>\$ 0.00</b>	<b>\$ 0.00</b>	<b>\$ 0.00</b>	<b>\$ 0.00</b>	<b>\$ 0.00</b>	<b>\$ 0.00</b>
<b>Total Other Income</b>	<b>\$ 2,601.95</b>	<b>\$ 420.00</b>	<b>\$ 739.00</b>	<b>\$ 425.00</b>	<b>\$ 3,340.95</b>	<b>\$ 845.00</b>
<b>Net Income</b>	<b>\$ 2,353.43</b>	<b>-\$ 853.00</b>	<b>\$ 1,563.70</b>	<b>-\$ 1,513.00</b>	<b>\$ 3,917.13</b>	<b>-\$ 2,366.00</b>

### Budget and Actual Expenditures for January, & February, 2021

Thursday, Mar 11, 2021 09:37:55 AM GMT-8 - Accrual Basis