



**Board of Trustees**

**Minutes**

**July 16, 2020**

		<u>Presenter</u>	<u>Duration</u>
<b>1</b>	<b>Call to Order and Evocation</b>	Mariann	5 Min
<b>2</b>	<b>Visioning</b>	Rev. Janis	15 min
<b>3</b>	<b>Checking In</b>	All	5 min
<b>4</b>	<b>Last Month's Minutes</b>	Mariann	Done/0 Min
<b>5</b>	<b>Call to Audience</b>	Mariann	1 Min
<b>6</b>	<b>Finance/Stewardship Report</b> <b>Pages 12-14</b>		
	Discussion of current fiscal status	Rev. J/Susan	5 min
<b>7</b>	<b>Review Current Business Items</b> <b>Page 2</b>		
7 a	911 Craycroft update	Rev. Janis	2 min
7 b	Moving accounts from Chase to Vantage	Rev. Janis/Susan	1 min
<b>8a-i</b>	<b>Major Goal Check-In/Dashboard</b> <b>Page 2</b>	All	15 Min
<b>9</b>	<b>The 2019-20 Planning Cycle</b> <b>Page 3</b>		
9a	Donor gratitude event - Delayed -	All	2 min
9b	Planning/Social not in August	All	2 min
9c	Board meeting August 20, 2020 at 5:30	All	0 min
9d	CSLT - planning its 50th anniversary in September	All	5 min
9e	Guest Speakers	Rev. J	2 min
<b>10</b>	<b>New Business for This Meeting</b> <b>Page 4</b>		
10a	Annual meeting preparation schedule	All	5 min
10b	Membership Class schedule	Rev. J	1
10c	Website Analytics Review - delayed	Mariann	5 min
<b>11</b>	<b>Tabled Items</b> <b>Page 4</b>		
	Next Steps for Consolidated Campus	Rev. Janis	0 min
	Board Covenants & Consensus	All	0 min
	Small Group Requirements	All	0 min
<b>12</b>	<b>Additional New Business for this meeting</b> <b>Page 4</b>	Mariann	2 min
<b>13</b>	<b>New Business for Next/Future Meeting</b> <b>Page 4</b>	All	2 Min
<b>14</b>	<b>Sunday's Gratitudes</b> <b>Page 4</b>	All	5 Min
<b>15</b>	<b>Review CIAB Schedule</b> <b>On hiatus</b>	All	0 Min
<b>16</b>	<b>Lead Newsletter Articles</b> <b>Page 4</b>	All	2 Min
<b>17</b>	<b>Six Month Look Ahead on Calendar</b> <b>Pages 6-8</b>	All	5 Min
<b>18</b>	<b>Team Reports</b> <b>Pages 9-11</b>	All	5 Min
	<b>Adjourn and Pray out</b>	Rev. Janis	
	<b>Present: Mariann Moery, Marya Wheeler, Susan Seid, Janie Hooper, Rev. Janis</b>		
	<b>Absent: no one</b>		
	<b>In Service: Scribe-Mariann; High Watch-Rev. Janis</b>		
	<b>Guests:</b>		

		<b>Center for Spiritual Living Tucson</b>						
				Board Minutes				
				July 16, 2020				
<b>1</b>	<b>Call to Order/Evocation</b>							5:30 p.m.
<b>2</b>	<b>Visioning</b>							
<b>Q: What is the Highest Vision or Highest Ideal for Center for Spiritual Living Tucson?</b>								
Bright Lights, Music, happy people; Studio from neighboring building. Bustling with video production. People in masks conferring with each other. Someone putting make up on Rev. Janis.; golden orb, shining light, an arc; Beacon of light drawing people in for spiritual enrichment and personal growth; Peace honed in strength								
<b>Q: What changes, evolves, or becomes as this highest vision comes into existence?</b>								
Auditorium opens, bright lights on, joy, sooner rather than later, flowers; Influx of members from locations outside of Tucson. Michael Tucker & Ellen; resistance releases, space opens up; Chorus of voices sharing their personal experiences and stories; quiet confidence, surprising people.								
<b>Q: Is there anything else that wants to be known, understood, or realized? What else?</b>								
This too shall pass; This is rushing to us and I am resistant. I let go of desire to retreat; possibilities for greater inclusion; Unique opportunity /offering for others, "Build it and they will come"; African daisies and sunflowers								
<b>3</b>	<b>Checking In</b>							<b>All</b>
<b>4</b>	<b>Last Month's Minutes</b>							<b>Mariann</b>
<b>5</b>	<b>Call to Audience</b>							<b>Mariann</b>
<b>6</b>	<b>Finance/Stewardship Report</b>							<b>Rev. J/Susan</b>
	Current financial reporting			Pages 12-14: Another good meeting with Accountant Kim. Though donations were lower than usual, since our expenses have also been lower, we are still in very good shape.				
	Administrative support			When the office re-opens, Rev. Janis will begin the search for part-time administrative support. She is defining the best job description for an Assistant.				
	Opportunity Fund contribution			Mariann and Rev. Janis are working on process to create and upload videos				
<b>7</b>	<b>Financial Reporting</b>							<b>Rev. J/Susan</b>
					<b>Report, Decision &amp; Action</b>			
<b>7a</b>	911 S Craycroft facilities update			No news on protecting the sign. The office was used as a safe space from the Bighorn Fire.				
<b>7b</b>	Moving to Vantage West CU			We have closed all but two Chase accounts. The transfer of automatic donations to Vantage West continues. Susan is now able to sign bank documents, so we can now proceed to set up a money market account when needed.				
<b>8</b>	<b>Review of Current Activities</b>							
<b>8a</b>	Education			Team Report attached.				
<b>8b</b>	Youth Program			With services online, there is no activity to report				
<b>8c</b>	Board Status			Planning for 2020-2022 The Board took a moment to hold the vision of a complete board functioning well and strongly.				

**CSLT - Board Minutes - July 16, 2020**

		<b>CSLT - Board Minutes - July 16, 2020</b>			
<b>8d</b>	Community & Growth 2020 Credo CSLT inspire spiritual expression in community with all and offers an accepting, loving, and peaceful way of living a joyful, healthier and more abundant life.	CSLT community presence. The recordings of our online Service generate views on YouTube: 481 minutes last month. The video, limited to the Reminder is less than an hour. Morning Meditation in our Zoom Room regularly has 10-14 participating from Canada to Mexico and Washington State to New York and soon Florida. We've had articles in the Arizona Daily Star a couple of times - Thank you Rev. Janis for doing this.			
<b>8e</b>	Covid 19	The Center's response: Waiting for local regulations to finalize. Services at the school will be determined by The School's ability to re-open and any restrictions on group size. We simply wait and see. As conditions permit we will start the neighborhood circles of contact. Livestream is being researched: it requires investments of money, time and knowledgeable individuals to create and produce weekly.			
<b>8f</b>	The CSLT Extended Leadership Team	Conversations on how we want to think about ourselves in the blended world of in-person and online have begun. Nothing definite, yet, other than the awareness that this is something whose time has come and we get to figure out how it works for us.			
<b>8g</b>	Newsletter Statistics	During June, between 563 and 584 e-newsletters were sent each week. 197-234 (35-41%) were opened and of those that opened the newsletters 31-40% clicked on something. Most amazing.			
<b>8h</b>	Survey 2020	The 2020 survey has closed with results discussed by the Board. Summary included in the newsletter with a full presentation at Annual Meeting.			
<b>8h</b>	Small Groups	The men's group now meets online 1st & 3rd Thursdays for breakfast, with 6-8 attending. Pat's Prosperity+ usually meeting 1st & 3rd Sundays with 5-8 attending continues to meet online with Shelly. Keith Gorley is started a new book study group online on June 6: Karen Armstrong's <i>12 Steps to a Compassionate Life</i> .			
<b>8i</b>	Board Liaisons	Team assignments and report due dates on Page 4			
<b>9</b>	<b>2019-2020 Planning Cycle</b>				
<b>9a</b>	Gratitude Dinner	Since the annual donor appreciation event scheduled for 3/29 has been postponed indefinitely, the Board continues to discuss alternative ways to express our gratitude to our Major Donors, even during this time of no-contact.			
<b>9b</b>	Planning/Social	There will not be an August Planning meeting			
<b>9c</b>	Board	August Board meeting may or may not be online August 20, 2020 at 5:30			
<b>9d</b>	CSLT 50th Anniversary	The anniversary date is September 14th. Celebration planning was to begin when Covid 19 restrictions eased. Gatherings of any size are not probably in the near future, so planning will begin when we can gather. The calendar for 2021 has returned to a 12 month plan. Maria and Mariann will work with Janis on ways to create it.			
<b>9e</b>	Guest speakers	Rev. Janis has contacted guest speakers for two Services. Dr. Karmen Smith spoke on July 5th. Melissa Phillippe + Z Egloff are set for the August 9th Service.			

CSLT - Board Minutes - July 16, 2020

		CSLT - Board Minutes - July 16, 2020						
<b>10</b>	<b>New Business for this meeting</b>							
<b>10a</b>	Annual Meeting	October 4th - due dates for announcement and Board materials were discussed.						
<b>10b</b>	Membership Class	At this time, there is no need. Online alternatives to be reviewed.						
<b>10c</b>	Website Analytics	Comparison of new site to old - covering 10 months was delayed pending receipt of revised reports.						
<b>11</b>	<b>Tabled Items</b>							
	Next steps for Consolidated Community Campus:	Further discussion of this item is tabled until Center and community growth clarifies our needs.						
	Board Covenants	The Board's Covenants and decision making procedures tabled for now.						
	Small group Requirements	Further discussion of this topic tabled for now.						
<b>12</b>	<b>Additional New Business for this meeting.</b>							
<b>13</b>	<b>New Business Items for Next Meeting</b>							
<b>14</b>	<b>Sunday Gratitudes</b>							
	<b>Date</b>	<b>Honoree</b>						
	7/19	Essential support people						
	7/26	Class attendees						
	8/2	Birthdays & Anniversaries						
	8/9	Music (Melissa & Z appearing that day)						
	8/16	Recognizing anyone who has taken any ProsperityPlus Class						
	8/23	Teachers, Educators and all who are working to bring school back						
<b>15</b>	<b>CIAB Schedule Gregory School contact: Mary Babbitt 520 243-3222</b>							
	7/19	To be scheduled when we return to The Gregory.						
	7/26							
	8/2							
	8/9							
	8/16							
	8/23							
	<b>Newsletter Articles</b>							
	<b>Due</b>	<b>Who is writing</b>						
	7/19	Marya						
	7/26	Janie						
	8/2	Rev.J						
	8/9	Mariann						
	8/16	Marya						
	8/23	Janie						
	Rotation:	Rev J--> Mariann--> Marya-->Janie						
<b>17</b>	<b>Six Month Calendar Review</b>						<b>Starts page 6</b>	

CSLT - Board Minutes- July 16, 2020

<b>18</b>	<b>Team Reports:</b>		<b>Start page 9</b>					
	Board Liaisons & Team Reports	2019-2020 Board Liaison responsibilities: Revised 4/16/2020 Rev. J. Sunday: Practitioner Core, Education, Admin, Ops Mariann: Chair, Trustees, Marcom, Outreach, Video, Photography, Membership, Bookstore Marya: Vice-Chair, Youth Program, Newcomers, Hosts Susan: Treasurer, Funding Janie: Greeters, Gratitude Banquet, Altared States, Cinema, Hospitality						
	<b>Due</b>	<b>10 days before Board meeting</b>						
	8/10	please email to						
	9/7	<a href="mailto:mmoery@gmail.com">mmoery@gmail.com</a>						
	10/15	Thank you!						
	<b>Adjourn and Pray Out</b>							

Center for Spiritual Living Tucson

	Sunday	Monday	Tuesday	Wednesday	Thursday	Friday	Saturday
<b>July 2020</b>	5 Dr. Karmen Smith - Service Pat's P+3 Group online	6	7 Power of your Word - online 1-3	8	9	10	11 K Gorley - 12 Steps to a Compassionate Life (Online)
	12	13	14 Power of your Word - online 1-3	15	16 Men's Group 9 Board 5:30	17	18 K Gorley - 12 Steps to a Compassionate Life (Online)
	19 Pat's +3 Group online	20	21 Power of your Word - online 1-3	22 This thing called you, online 6:30-8:30p	23	24	19 K Gorley - 12 Steps to a Compassionate Life (Online)
	26	27	28 Power of your Word - online 1-3	29 This thing called you, online 6:30-8:30p	30	31	<b>August 1st</b> K Gorley - 12 Steps to a Compassionate Life (Online)
	Sunday	Monday	Tuesday	Wednesday	Thursday	Friday	Saturday
<b>August 2020</b>	2 - Potluck Pat Masters' P+3	3	4 Power of your Word - online 1-3	5 This thing called you, online 6:30-8:30p	6 Men's Group 9 Vision Core 6:30-virtual	7	8 K Gorley - 12 Steps to a Compassionate Life (Online)
	9 Melissa Phillippe + Z Egloff - Service What We Believe 1:30-3 pm	10	11 Power of your Word - online 1-3	12 This thing called you, online 6:30-8:30p	13	14	15 K Gorley - 12 Steps to a Compassionate Life (Online)
	16 Lunch Bunch Pat's P+3 Group	17	18 Power of your Word - online 1-3	19	20 Men's Group 9 Board 5:30	21	22 K Gorley - 12 Steps to a Compassionate Life (Online)
	23 Cinema	24	25 Power of your Word - online 1-3	26	27 Youth Ministry Team 6:15	28	29 K Gorley - 12 Steps to a Compassionate Life (Online)

Center for Spiritual Living Tucson

	Sunday	Monday	Tuesday	Wednesday	Thursday	Friday	Saturday
September 2020	30	31	<b>Sept. 1</b> Power of Your Word - online 1-3	2	3 Men's Group 9 Vision Core 6:30	4	5
	6 Pot Luck Pat's Group	7 <b>Labor Day</b>	8 Power of your Word - online 1-3	9	10	11	12
	13 What We Believe	14	15	16	17 Men's Group 9 Board 5:30	18	19
	20 Lunch Bunch Pat's Group	21	22 <b>Art of Life</b> by Ernest Holmes: K Gorley 4- 5:30	23	24 Youth Ministry Team 6:15	25	26
	27 Cinema	28	29 <b>Art of Life</b> by Ernest Holmes: K Gorley 4-5:30	30	<b>October 1</b> Men's Group 2 - 9 a.m. Vision Core 6:30		3
	Sunday	Monday	Tuesday	Wednesday	Thursday	Friday	Saturday
October 2020	4 Pot Luck <b>Annual Meeting</b> Pat's Groups	5	6 <b>Art of Life</b> by Ernest Holmes: K Gorley 4-5:30 <b>Visioning</b> time tbd	7	8	9	10
	11 What We Believe	12	13 <b>Art of Life</b> by Ernest Holmes: K Gorley 4-5:30 <b>Visioning</b> time tbd	14	15 Men's Group 9 Board 5:30	16	17
	18 Lunch Bunch Pat's Group	19	20 <b>Art of Life</b> by Ernest Holmes: K Gorley 4-5:30 <b>Visioning</b> time tbd	21	22 Youth Ministry Team 6:15	23	24
	25 Cinema	26	27 <b>Art of Life</b> by Ernest Holmes: K Gorley 4-5:30 <b>Visioning</b> time tbd	28	29	30	31

Center for Spiritual Living Tucson

Center for Spiritual Living Tucson							
	Sunday	Monday		Wednesday	Thursday	Friday	Saturday
<b>November 2020</b>	1 Pot Luck Pat's Groups	2	3 <b>Art of Life</b> by Ernest Holmes: K Gorley 4-5:30 <b>Visioning</b> time tbd	4	5 Men's Group 9 Vision Core	6	7
	8 What We Believe	9	10 <b>Art of Life</b> by Ernest Holmes: K Gorley 4-5:30 <b>Visioning</b> time tbd	11	12	13	14
	15 Lunch Bunch Pat's Group	16	17 <b>Art of Life</b> by Ernest Holmes: K Gorley 4-5:30 <b>Visioning</b> time tbd	18	19 Men's Group 9 5:30 Board	20	21
	22 Cinema	23	24 <b>Art of Life</b> by Ernest Holmes: K Gorley 4-5:30 <b>Visioning</b> time tbd	25	26 Thanksgiving re-sched Youth Ministry Team 6:15	27	28
	29 Fifth Sunday	30	Dec 1 <b>Art of Life</b> by Ernest Holmes: K Gorley 4-5:30	2	3 Men's Group 9 Vision Core	4	5
	Sunday	Monday	Tuesday	Wednesday	Thursday	Friday	Saturday
<b>December 2020</b>	6 Pot Luck Pat's Groups	7	8 <b>Art of Life</b> by Ernest Holmes: K Gorley 4-5:30	9	10	11	12
	13 What We Believe	14	15	16	17 Men's Group 9 5:30 Board	18	19
	20 Lunch Bunch Pat's Group <b>Candlelighting</b>	21 Rev. J out of town	22 Rev. J out of town	23 Rev. J out of town	24 Rev. J out of town	25 Rev. J out of town	26 Rev. J out of town
	27 Cinema	28	29	30	31 <b>Endings/Beginnings</b>	27	28



# CSLT - Board Agenda - July 16, 2020

## Team Reports for June 2020

### **ADMINISTRATION**

All non-essential activities continue being deferred until 'afterwards' (whatever that means.)

The monthly Board Agenda, production of the Board Minutes and uploading to website has been handed off. Thank you, Mariann M! Our webmaster, Graeme tidies up errors we find and keeps our web presence looking sharp. He took down an 'invitation' to join us for Bob Sima's presentation on June 14th that Mariann put together, and added a splash about Dr Karmen speaking on July 5th. Thanks, Graeme! Maria S. uploads the online calendar & blog, and makes the Sacred Cinema bulletin insert (when we have Cinema). Thank you Maria!

Kim, our new bookkeeper, continues to delight us with her competence. Bank move nearly complete. A few 'stubborn' items remain.

We learned to accept Zelle as a payment method this month.

Submitted by Rev. Janis

### **ALTARED STATES**

We could still use one more person to cover travel and other absences.

Submitted by Janie Hooper

### **BOOKSTORE**

Oh hiatus until "afterwards."

Submitted by Rev. Janis

### **CINEMA**

Oh hiatus until "afterwards."

Submitted by Janie Hooper

### **COMPASSIONATE CARE**

With in-person contact deferred, the Compassionate Heart team was basically asked to 'stand down' even further from all interpersonal contact, after the middle of March. Some meal, care and transportation services continues to be provided in very specific cases.

Submitted by: Rev. Janis

### **COMMUNITY BUILDERS OUTREACH**

Report is included within the Body of the Minutes.

Submitted by: Mariann Moery

### **ECCLESIASTICAL CORE**

Shelly continues to do the bulk of the online Sunday morning meditations.

We continued online Sunday services (through zoom). A diversity of regulars and new people keep appearing, and we get better at doing it, and individuals get more comfortable in the stay-home-isolation-mode of doing Sundays.

Rev Janis continues the morning daily practice (on zoom), which is actually growing in daily attendance. In May there were 285 individual points of contact and 26 group affirmative prayers; in June there were 299 individual points of contact and 26 group affirmative prayers as part of this activity.

Submitted by: Rev. Janis

### **EDUCATION CORE**

Pat Masters' Prosperity Plus III class members met twice online during June with Shelly Dunn acting as host.

Rev Janis completed the online 12-week Meditation Seminar on July 1, which will serve as a certificated class for those who desire that, and will allow drop-ins for those who don't care to participate at that level or frequency. Most weeks we had 5-6 regular participants, 3 chose to receive certificates. It is a joy to have extra weeks to expand the meditation curriculum, because we are doing 2-hour sessions on zoom (instead of the 3-hour classes, which get long sitting in front of a computer monitor, or on a phone call.) On June 10, Maria S. led a mandala coloring meditation and Rev Janis rounded out the night with reading selected Rumi poetry.

Keith Gorley's book study on Karen Armstrong's Twelve Steps to a Compassionate Life began Saturday mornings June 6th. The bookstudy was held in Keith's zoom room with approx. 8 persons attending regularly.

## Team Reports for June 2020

### **Education Core continued ...**

As a result of the 2020 community survey two classes have been scheduled. "Power of Your Word", a certificated class begins July 7 with Rev Janis facilitating and Shelly Dunn facilitates a 4-week non-certificated class on This Thing Called You beginning July 22. An additional zoom room is being set up to accommodate the additional classes.

Submitted by: Rev. Janis

### **FACILITIES TEAM**

Report is included as agenda item.

Submitted by: Mariann Moery

### **FUNDING TEAM**

Team met as part of budget review/reforecast

Submitted by: Mariann Moery

### **GREETERS**

Situation normal, until it wasn't.

Submitted by Janie Hooper

### **HOST TEAM**

Situation normal, until it wasn't.

Submitted by Marya Wheeler

### **MARKETING AND COMMUNICATIONS TEAM**

Update in the Community/Growth Agenda Item.

Submitted by: Mariann Moery

### **MEMBERSHIP**

Nothing to report at this time.

Submitted by: Mariann Moery

### **MINISTER'S TRAVEL PLANS**

No travel occurred in June. None anticipated in July or August. We delighted in hosting Bob Sima & Shannon Plummer in June and look forward to hosting Dr Karmen Smith on July 5th. Rev Janis was and will be present for the guest speakers and guest musical artists, because she's running the zoom account.

Submitted by: Rev. Janis

### **MUSIC/SOUND**

Our CSLT Orchestra continues to impress with the way they are flowing with the available resources for Sunday performance music, and with the quality of music provided.

During June we sang 'I Dreamed of Rain' as our opening congregational song, as we generally do in June to help call the monsoons in.

Bob Sima and Shannon Plummer provided special music and the Sunday talk on June

Submitted by: Rev. Janis

### **NEWCOMERS TEAM**

Situation normal, until it wasn't.

Submitted by Marya Wheeler

### **PRACTITIONER CORE**

At present, Shelly Dunn is conducting the bulk of the Sunday morning pre-service meditations and providing platform support twice a month, in addition to other behind the scene tasks.

She plans to facilitate a Wednesday evening short series on Ernest Holmes' This Thing Called You starting July 22 for 4 weeks.

Submitted by: Rev. Janis

## **YOUTH & FAMILY**

Situation normal, until it wasn't.

Submitted by Marya Wheeler

### **Vision Core Notes begun July 2, 2020 6:30pm (on Zoom)**

Vision Core met on Zoom for the first time in June and enjoyed it so much they did it again in July.

**Participating Live:** Marya Wheeler, Chris Wheeler, Barbara McGill, Rev Janis Farmer

**Also Participating:** Christina Reed, Carol Nigut

### **What's the highest vision, highest ideal for Center for Spiritual Living Tucson?**

Lots and lots of high density zoom squares, good news that has been waiting, is delivered; We purchase the property next door, and open it up to make one big room, with video equipment and a big screen TV for Sunday services and classes, everyone can be socially distanced, red-purple curtains on one wall to make a 'stage' area; Simple treatment, skill development and practice. Deprivation is perceived, Allow emerging creation; Song: There is Only Love, fuzzy blanket (means?, soft, gentle acceptance of all); Peace like a gentle, broad river; Unity, Community, Peace, Harmony, Healing of Humankind.

### **What changes, evolves, becomes (releases, moves in or away) as this vision comes into being?**

Solid connections, finding comfort and acceptance of the newness, joining together, influx of new (not local) people, big doors, part of a network of CSLs doing similar video-based things, people sharing resources; Deprivation is a story that changes to freedom, (personal) looking for a place to fit in when I can; Magic mirror (perspective shift), Blue doors opening, smiling faces; Happy monument; Hearts of Peace. Belief. Practice. Persistence.

### **Is there anything else that wants to be known, realized or understood?**

Full large vision, broadcasting; Gratefully allow message to spread more widely, Daily morning meditation has more formal structure and breakout groups to allow more socializing time; Move from static position. Dig deeper. Break through. Going through a portal, be still and know it as all good, and more good is coming. Wait for it. Higher quality, less stuff, quantity; Nourishment, peace, ease, joy; My peace I bring to you; Now is the time for deep stillness and steeping in the assurance of God's love and wisdom.

# Center for Spiritual Living Tucson

## Board Agenda & Reports

July 16, 2020

### 7 Finance/Stewardship Report

**Rev Janis, Interim; Susan Seid, As Much As Practicable**

#### Executive Summary:

June was a 4-Sunday month, again entirely online. Average attendance holding mostly steady. Special guests (Bob Sima & Shannon Plummer) on June 14th did not increase our attendance numbers.

Susan Seid has begun functioning as Treasurer, has begun handling transactions at the bank. She also signs checks, when necessary and reasonable. Weekly meetings and review with bookkeeper on zoom.

The Board has agreed to sustain and hold the vision of increased attendance by individuals willing and able to participate (in all ways and on many levels), which allows us opportunities to expand our reach in Tucson.

	New						
	<u>Total Sunday Offerings &amp; P+</u>	<u>Designated Monies</u>	<u>Total Income*</u>	<u>Total Expenses*</u>	<u>Net Income*</u>	<u>\$/Weekly Attendee</u>	<u>Avg Weekly Attendance</u>
June	\$8,651	\$47,479	\$8,870	\$7,667	\$1,203	\$53.07	41+
May	\$10,062	\$300	\$10,342	\$9,022	\$1,320	\$48.14	42+
April	\$9,660	0	\$10,122	\$10,231 <sup>†</sup>	<109>	57.84	42+
March	\$10,692	0	\$11,806	\$9,408	2,398.00	53.46	40 (5 weeks)

\* Presently we have a stand-alone Facility Fund, Scholarship Fund, a Practitioner Fund, an Opportunity Fund and a Compassionate Heart fund. All are designated and are not considered as part of Total Income or Total Expenses.

<sup>†</sup> Paid out \$1332 in facilitator fees for classes begun in January, set aside \$250 in scholarships & bought class materials.

<u>Cash Balances</u>	<u>June</u>	<u>May</u>	<u>April</u>	<u>March</u>
Chase General Ops Checking	\$9,784	\$9,729	\$9,729	\$9,619
Vantage W. Gen Ops Checking	\$30,616	\$31,484	\$30,651	\$28,010
Chase Education (Savings) Fund	\$0	\$0	\$0	\$0
Vantage W. Education Savings	\$8,652	\$8,627	\$9,021	\$10,631
Chase (Operating) Savings	\$0	\$0	\$0	\$0
VWCU Practitioners' Savings	\$412	\$412	\$412	\$412
Designated Holdings (Music)	\$0	\$0	\$0	\$0
<b>SubTotal</b>	<b>\$49,464</b>	<b>\$50,252</b>	<b>\$49,813</b>	<b>\$48,672</b>
Chase Opportunity Fund <sup>☞</sup>	<b>\$0</b>	<b>\$0</b>	<b>\$0</b>	<b>\$0</b>
Chase Facility Fund Savings	\$48,541	\$1,061	\$1,061	\$1,061
Vantage W. Facility Fund Savings	\$4,719	\$4,719	\$4,718	\$4,718
VWCU Imprmnt/Opportun Fund	\$15,722	\$15,700	15396*	\$16,428
Facility Fund Invest. Acct	\$0	\$0	\$0	\$0
<b>Total</b>	<b>\$118,446</b>	<b>\$71,732</b>	<b>\$70,988</b>	<b>\$70,879</b>

The Gregory School has declined to accept our rental payments for May & June since the school is closed.

<sup>☞</sup> We received an anonymous designated gift, part of which is to be used for 'sustainable' marketing activities. We called this the Opportunity Fund. Out of this account we have funded the website upgrade & partially funded of our Office improvement fund.

\*Paid for year of print advertising (\$1,050) in Explorer News, Foothills News, Marana News & Desert Times.

#### Comparison between June 2019 and June 2020 (June 2019 5-Sunday, June 2020 4-Sunday month):

Attendance/Sunday	DEcreased by	19	Online only in 2020, attendance estimated.
Offerings/Month	DEcreased by	\$4,002	As of the end of June we have been online
Offering/person/Sunday	INcreased by	\$11.03	for 15 weeks for Sunday Celebration Services,
Total Income	DEcreased by	\$5,418	classes, Mastermind group meetings, book
Expenses	DEcreased by	\$1,641	studies, and monthly Board of Trustees
Net Income	DEcreased by	\$3,778	meetings.

**RECOGNITION: One year ago this month, our 22nd Street land sale closed, we found a new office and education center (and moved), and Shelly Dunn received her practitioner's license.**

#### Status of the CSLT Facility Fund

# Center for Spiritual Living Tucson

## Board Agenda & Reports

July 16, 2020

Facility Fund Investment Acct Deposits: Initial Deposit \$50,000 (Nov12), Deposit \$10,236 (Mar13) Deposit \$15,188 (Dec13)  
 Investment Account closed December 2016 to purchase raw land at 4961 E. 22nd St. On June 3, 2019 we sold our raw land on 22nd St, and have agreed to serve as 'bank' for the buyer for five years with annual payments, on June 3 of each year.

Date	CSLT Contributions	Various Projects & Interest	Personal Donations	\$ Total
Year End 2009				29,365
Year End 2010				48,710
Year End 2011				70,361
Year End 2012	6,800	1,045	1,430	79,636
Matching Fund Reserves			2,900	82,536
Year End 2013 (Inspection)	<1,800>	4,780	3,327	88,843
Year End 2014	<600>	1,789	25,884	115,936
Year End 2015 (Moved to River Rd)	<5,223>	<1,786>	7,109	116,027
Year End 2016 (Purchased land)	<102,024>	2,068	2,440	18,511
Year End 2017 (InvAcctClosed.)		164	1,500	20,175
Year End 2018		112	1,000	21,287
Year End 2019 (sold land & bought office)		(net) <17,146>	200	4,341
January 2020				4,341
February 2020				4,341
March 2020				4,341
April 2020				4,341
May 2020				4,341
June 2020		47,479		53260*

Facility Fund expenses to relocate to our Education Center have been completed (for now). In total we spent \$59,330.32 for the downpayment and the repairs required to meet the requirements of our mortgage holder.

A detailed breakdown of expenditures was presented in the January 16th Board minutes.

We received the annual payment on the 22nd Street property during June (\$47,479.28) 😊

\*We paid approximately \$1,440 of capital expenses from the General Operations, which is why this number is higher than expected.

### Year to Date Budget reviewed separately

### Range Report for 2nd Quarter 2020 (with previous quarters for comparison)

Donations/ qtr	2Q2020		1Q2020		4Q2019		3Q2019		2Q2019	
	All	Extnd Ldrs	All	Extnd Ldrs	All	Extnd Ldrs	All	Extnd Ldrs	All	Extnd Ldrs
>\$2,000	2	1	3	0	4	1	0	0	1	1
\$1,500-1,999	2	1	3	2	3	1	4	2	4	1
\$1,000-1,499	5	1	1	1	4	2	4	4	3	3
\$750-999	2	1	4	2	5	2	3	2	2	1
\$500-749	7	3	8	4	12	5	7	3	11	6
\$250-499	8	4	13	5	11	4	12	2	11	4
\$100-249	15	4	14	2	16	2	13	5	22	2
\$1-99	6	1	20	1	12	1	24	1	15	0
0 or UnID'd	?	3	?	3	?	2	?	2	?	2
<b>Total Number</b>	<b>47+</b>	<b>19</b>	<b>66+</b>	<b>20</b>	<b>67+</b>	<b>20</b>	<b>67+</b>	<b>21</b>	<b>68+</b>	<b>20</b>

For the 2<sup>nd</sup> quarter 2020, the bright line (20% of the contributors donated 80% of the income) was \$450 and included 8 leaders out of 21 contributors. This was our first quarter of being almost entirely online.

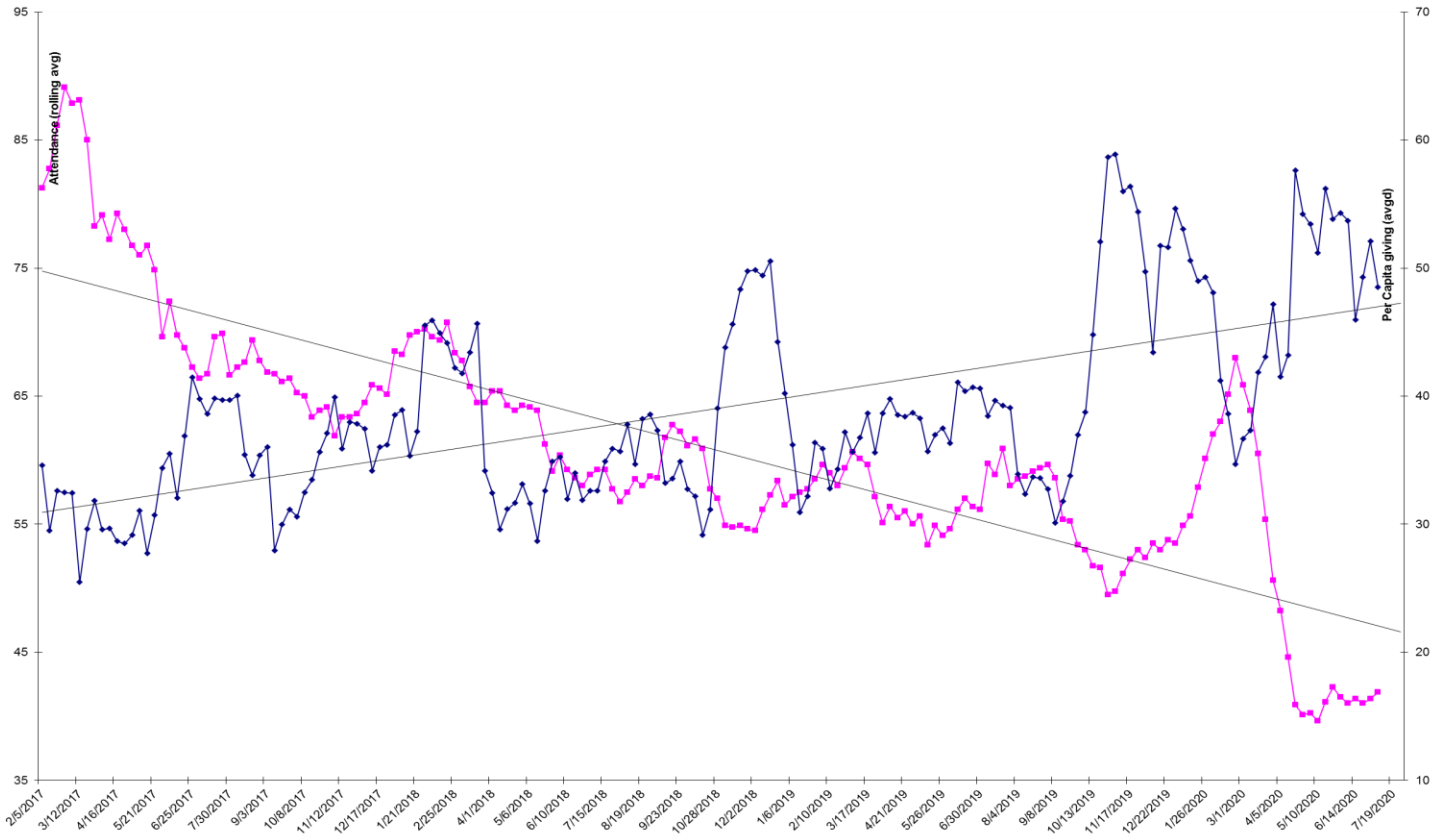
For the 1<sup>st</sup> quarter 2020, the 'bright line' was \$450 and included 10 leaders out of 21 contributors. For the 4<sup>th</sup> quarter of 2019, the bright line was \$600 and included 9 of the extended leadership out of 22 contributors. For the 3<sup>rd</sup> quarter of 2019, the bright line was \$400 and included 13 of the extended leadership out of 24 contributors.

# Center for Spiritual Living Tucson

## Board Agenda & Reports

July 16, 2020

For the 2<sup>nd</sup> quarter of 2019, the bright line was \$400 and included 13 leaders out of 25 congregants.



pink (lower) line attendance

blue (upper) line contributions per person per Sunday

both are rolling averages (over 8 weeks) to reduce the amount of 'noise' in the numbers.