



Board of Trustees

Agenda

June 18, 2020

		Presenter	Duration
1	Call to Order and Evocation	Mariann	5 Min
2	Visioning	Rev. Janis	15 min
3	Checking In	All	5 min
4	Last Month's Minutes	Mariann	Done/0 Min
5	Call to Audience	Mariann	1 Min
6	Finance/Stewardship Report Pages 12-14		
	Discussion of current fiscal status	Rev. J/Susan	5 min
7	Review Current Business Items Page 2		
7 a	911 Craycroft update	Rev. Janis	2 min
7 b	Moving accounts from Chase to Vantage	Rev. Janis/Susan	1 min
7 c	Payment on 22nd St	Rev. Janis	1 min
8a-j	Major Goal Check-In/Dashboard Page 2	All	15 Min
9	The 2019-20 Planning Cycle Page 3		
9a	Donor gratitude event - Delayed	All	2 min
9b	Planning/Social July tbd	All	2 min
9c	Board meeting July 16, 2020 at 5:30	All	0 min
9d	CSLT - planning its 50th anniversary in September	All	5 min
10	New Business for This Meeting Page 4		
	2020 Survey results to be discussed	All	15 min
	Guest speakers/performers schedule	Rev. Janis	5 min
11	Tabled Items Page 4		
	Next Steps for Consolidated Campus	Rev. Janis	0 min
	Board Covenants & Consensus	All	0 min
	Small Group Requirements	All	0 min
12	Additional New Business for this meeting Page 4	Mariann	2 min
13	New Business for Next/Future Meeting Page 4	All	2 Min
14	Sunday's Gratitudes Page 4	All	5 Min
15	Review CIAB Schedule On hiatus	All	0 Min
16	Lead Newsletter Articles Page 4	All	2 Min
17	Six Month Look Ahead on Calendar Pages 6-8	All	5 Min
18	Team Reports Pages 9-11	All	5 Min
	Adjourn and Pray out	Rev. Janis	
Present: Mariann Moery, Marya Wheeler, Janie Hooper, Susan Seid, Rev. Janis			
Absent: no one			
In Service: Scribe - Mariann, High Watch - Rev. Janis			
Guests: none			

		Center for Spiritual Living Tucson						
				Board Agenda				
				June 18, 2020				
1	Call to Order/Evocation							5:30 p.m.
2	Visioning							
Q: What is the Highest Vision or Highest Ideal for Center for Spiritual Living Tucson?								
Double rainbows; Solid as a rock, round, safe, light, leadership; Rainbow tie dye hippie shirt, burst of light; A network map spreading across the US and the world, pulsating yellow; Orderly, set organization, no upsets.								
Q: What changes, evolves, or becomes as this highest vision comes into existence?								
Brownian motion slows down. Pendulum returning to center still point; Peace becomes possible, people gather again in the light; Positive energy infusing congregants spreading out to community and beyond. Magnetism; Impressions of many people around and available - in shadow. Edgar Cayce description of those passed-on; People settle into the way of growth & learning. Being Science of Mind.								
Q: Is there anything else that wants to be known, understood, or realized? What else?								
Annie singing - "The Sun Will Come Out Tomorrow"; It is a process getting there. It becomes comfort and there is a vibration to it; Energized, fueled by joy; There is a power for good in the universe greater than you are and we can use it; Shut up & Do! Enough already!								
3	Checking In							All
4	Last Month's Minutes							Mariann
5	Call to Audience							Mariann
6	Finance/Stewardship Report							Rev. J/Susan
	Current financial reporting			Pages 12-14				
	Administrative support			When the office re-opens, Rev. Janis will begin the search for part-time administrative support.				
	Opportunity Fund contribution			Mariann and Rev. Janis are working on process to create and upload videos				
7	Financial Reporting							Rev. J/Susan
Report, Decision & Action								
7a	911 S Craycroft facilities update			Our sign has been physically inspected and a report is expected on the two processes to protect from any potential graffiti.				
7b	Moving to Vantage West CU			We have closed all but two Chase accounts. Susan is now able to sign bank documents, so we can now proceed to set up a money market account.				
7c	22nd Street			First annual payment received. The money was deposited directly to the Facility Fund account.				
8	Review of Current Activities							
8a	Education			Team Report attached. Rev. Janis created a short survey asking what type of classes the community would like in the future.				
8b	Youth Program			With services online, there is no activity to report				
8c	Board Status			Nothing new to report. The Board stopped for a moment to hold the vision of a complete board functioning well and strongly, with the request that each of us do this regularly.				

CSLT - Board Agenda - June 18, 2020

		CSLT - Board Agenda - June 18, 2020			
8d	Community & Growth 2020 Credo CSLT inspire spiritual expression in community with all and offers an accepting, loving, and peaceful way of living a joyful, healthier and more abundant life.	<p>CSLT community presence.</p> <p>The recordings of our online Service have been watched a total of 406 hours on YouTube. Since the video is limited to the Reminder which is less than an hour, the number of times watched is greater than the 406. Really fine successful outreach!</p> <p>Morning Meditation in our Zoom Room regularly has 10-14 participating from Tucson area and well beyond. New people show up regularly and stay.</p> <p>Our "who we are" card is printed and ready to be distributed throughout and by the entire community once Covid 19 restrictions are removed.</p> <p>Our ad appears weekly in the multiple communities served by the Center.</p>			
8e	Covid 19	<p>The Center's response: Waiting for local regulations to finalize. Services at the school will be determined by The School's ability to re-open and restrictions on group size. We simply wait and see. As conditions permit we will start the neighborhood circles of contact. Our ad is appearing weekly in the multiple communities served by the Center. Livestream is being researched: it requires investments of money, time and knowledgeable individuals to create and produce weekly.</p>			
8f	The CSLT Extended Leadership Team	<p>Conversations on how we want to think about ourselves in the blended world of in-person and online have begun.. Nothing definite, yet, other than the awareness that this is something whose time has come and we get to figure out how it works for us. Responses to the questions in the Survey are part of this discussion.</p>			
8g	Newsletter Statistics	<p>583-587 e-newsletters sent. 210-252 opened (36-43%). 32-43% click-throughs. Still amazing</p>			
8h	Survey 2020	<p>The 2020 survey has closed with results discussed by the Board. Results to be included in the newsletter with a full presentation at Annual Meeting.</p>			
8h	Small Groups	<p>The men's group now meets online 1st & 3rd Thursdays for breakfast, with 6-8 attending. Pat's Prosperity+ usually meeting 1st & 3rd Sundays with 5-8 attending continues to meet online with Shelly.</p> <p>Keith Gorley is starting a new book study group online on June 6: Karen Armstrong's <i>12 Steps to a Compassionate Life</i>.</p>			
8j	Board Liaisons	<p>Team assignments and report due dates on Page 4</p>			
9	2019-2020 Planning Cycle				
9a	Gratitude Dinner	<p>The annual donor appreciation event scheduled for 3/29 remains postponed. It may be re-scheduled later when larger gathers are allowed, or since there is no end date, The Board is to consider other ways to express our</p>			
9b	Planning/Social	<p>there will not be a July Planning meeting</p>			
9c	Board	<p>July Board meeting may or may not be online July 16, 2020 at 5:30</p>			
9d	CSLT 50th Anniversary	<p>The anniversary date is September 14th. Celebration planning is to begin when Covid 19 restrictions are clarified. It was agreed the celebration should be seen as a "homecoming" and include recognition of our community's creativity, and the contributions that makes us who we are at 50. A calendar celebrating CSLT is being created and donations have been requested, though none have been received. Maria and Mariann will work with Janis on ways to create it.</p>			


CSLT - Board Agenda - June 18, 2020

		CSLT - Board Agenda - June 18, 2020								
10	New Business for this meeting									
	2020 Survey	Results were discussed								
	Guest speakers	Rev. Janis has contacted guest speakers for two Services. Dr. Karmen Smith to speak on July 5th. Announcement in the newsletter. Melissa Phillippe + Z Egloff for the August 9th Service.								
11	Tabled Items									
	Next steps for Consolidated Community Campus:	Further discussion of this item is tabled until Center and community growth clarifies our needs.								
	Board Covenants	The Board's Covenants and decision making procedures tabled for now.								
	Small group Requirements	Further discussion of this topic tabled for now.								
12	Additional New Business for this meeting.									
13	New Business Items for Next Meeting									
14	Sunday Gratitudes									
	Date	Honoree								
	6/21	Father's Day and summer arrives officially								
	6/28	Firefighters								
	7/5	Birthdays & anniversaries								
	7/12	Medical Personnel								
	7/19	Essential support people								
	7/26	Class attendees								
15	CIAB Schedule Gregory School contact: Mary Babbitt 520 243-3222									
	6/21	To be scheduled when we return to The Gregory.								
	6/28									
	7/5									
	7/12									
	7/19									
	7/26									
	Newsletter Articles									
	Due	Who is writing								
	6/21	Janie								
	6/28	Rev. Janis								
	7/5	Susan								
	7/12	Mariann								
	7/19	Marya								
	7/26	Janie								
	Rotation:	Rev J-->Susan -> Mariann--> Marya-->Janie								
17	Six Month Calendar Review						Starts page 6			

CSLT - Board Agenda- June 18, 2020

		CSLT - Board Agenda- June 18, 2020						
18	Team Reports:				Start page 9			
	Board Liaisons & Team Reports		2019-2020 Board Liaison responsibilities: Revised 4/16/2020 Rev. J. Sunday: Practitioner Core, Education, Admin, Ops Mariann: Chair, Trustees, Marcom, Outreach, Video, Photography, Membership, Bookstore Marya: Vice-Chair, Youth Program, Newcomers, Hosts Susan: Treasurer, Funding Janie: Greeters, Gratitude Banquet, Altared States, Cinema, Hospitality					
	Due	10 days before Board meeting						
	7/6	please email to						
	8/10	mmoery@gmail.com						
	9/7	Thank you!						
Adjourn and Pray Out								

Center for Spiritual Living Tucson

	Sunday	Monday	Tuesday	Wednesday	Thursday	Friday	Saturday
June 2020	7 Pat's P+3 Group online	8	9	10 Meditation seminar online 5-7	11	12	13 K Gorley - 12 Steps to a Compassionate Life (Online)
	14 Bob Sima, music & message, online.	15	16	17 Meditation seminar online 5-7	18 Men's Group 9 Board 5:30	19	20 K Gorley - 12 Steps to a Compassionate Life (online)
	21 Pat's P+3 Group online	22	23	24 Meditation seminar online 5-7	25	26	27 K Gorley - 12 Steps to a Compassionate Life (Online)
	28	29	30	July 1st Online Meditation seminar ends	2 Men's Group 9 a m Vision Core-virtual	3	4 
	Sunday	Monday	Tuesday	Wednesday	Thursday	Friday	Saturday
July 2020	5 Dr. Karmen Smith - Service Pat's P+3 Group online	6	7 Power of your Word - online 1-3	8	9	10	11 K Gorley - 12 Steps to a Compassionate Life (Online)
	12	13	14 Power of your Word - online 1-3	15	16 Men's Group 9 Board 5:30	17	18 K Gorley - 12 Steps to a Compassionate Life (Online)
	19 Pat's +3 Group online	20	21 Power of your Word - online 1-3	22	23	24	19 K Gorley - 12 Steps to a Compassionate Life (Online)
	26	27	28 Power of your Word - online 1-3	29	30	31	August 1st K Gorley - 12 Steps to a Compassionate Life (Online)

Center for Spiritual Living Tucson

	Sunday	Monday	Tuesday	Wednesday	Thursday	Friday	Saturday
August 2020	2 - Potluck Pat Masters' P+3	3	4 Power of your Word - online 1-3	5	6 Men's Group 9 Vision Core 6:30- virtual	7	8 K Gorley - 12 Steps to a Compassionate Life (Online)
	9 Melissa Phillippe + Z Egloff - Service <i>What We Believe</i>	10	11 Power of your Word - online 1-3	12	13	14	15 K Gorley - 12 Steps to a Compassionate Life (Online)
	16 Lunch Bunch Pat's P+3 Group	17	18 Power of your Word - online 1-3	19	20 Men's Group 9 Board 5:30	21	22 K Gorley - 12 Steps to a Compassionate Life (Online)
	23 Cinema	24	25 Power of your Word - online 1-3	26	27 Youth Ministry Team 6:15	28	29 K Gorley - 12 Steps to a Compassionate Life (Online)
	Sunday	Monday	Tuesday	Wednesday	Thursday	Friday	Saturday
September 2020	30	31	Sept. 1 Power of Your Word - online 1-3	2	3 Men's Group 9 Vision Core 6:30	4	5
	6 Pot Luck Pat's Group	7 Labor Day	8 Power of your Word - online 1-3	9	10	11	12
	13 What We Believe	14	15	16	17 Men's Group 9 Board 5:30	18	19
	20 Lunch Bunch Pat's Group	21	22	23	24 Youth Ministry Team 6:15	25	26
	27 Cinema	28	29	30	October 1 Men's Group - 9 a.m. Vision Core 6:30	2	3

Center for Spiritual Living Tucson

	Sunday	Monday	Tuesday	Wednesday	Thursday	Friday	Saturday
October 2020	4 Pot Luck Pat's Groups	5	6	7	8	9	10
	11 What We Believe	12	13	14	15 Men's Group 9 Board 5:30	16	17
	18 Lunch Bunch Pat's Group	19	20	21	22 Youth Ministry Team 6:15	23	24
	25 Cinema	26	27	28	29	30	31
November 2020	1 Pot Luck Pat's Groups	2	3	4	5 Men's Group 9 Vision Core	6	7
	8 What We Believe	9	10	11	12	13	14
	15 Lunch Bunch Pat's Group	16	17	18	19 Men's Group 9 5:30 Board	20	21
	22 Cinema	23	24	25	26 Thanksgiving re-sched ? Youth Ministry Team 6:15	27	28
	29 Fifth Sunday	30	1-Dec	2	3	4	5

ADMINISTRATION

All non-essential activities continue being deferred until 'afterwards' (whatever that means.)

The monthly Board Agenda, production of the Board Minutes and uploading to website has been handed off. Thank you, Mariann M! Our webmaster, Graeme tidies up errors we find and keeps our web presence looking sharp. He uploaded an 'invitation' to join us for Bob Sima's presentation on June 14th that Mariann put together. Thanks, Graeme! Maria S. uploads the online calendar & blog, and makes the Sacred Cinema bulletin insert (when we have Cinema). Thank you Maria!

Kim, our new bookkeeper, continues to delight us with her competence. Bank move nearly complete. A few 'stubborn' items remain.

Submitted by: Rev. Janis

ALTARED STATES

We could still use one more person to cover travel and other absences.

Submitted by Janie Hooper

BOOKSTORE

We've sold & shipped a few copies of Science of Mind magazine to congregants who asked for them.

Submitted by Wendie Arison

CINEMA

Oh hiatus until "afterwards."

Submitted by Janie Hooper

COMPASSIONATE CARE

With in-person contact deferred, the Compassionate Heart team was basically asked to 'stand down' even further from all interpersonal contact, after the middle of March. Some meal, care and transportation services continues to be provided in very specific cases.

Submitted by: Rev. Janis

COMMUNITY BUILDERS OUTREACH

Report is included within the Body of the Minutes.

Submitted by: Mariann Moery

ECCLESIASTICAL CORE

Shelly continues to do the bulk of the online Sunday morning meditations.

We continued online Sunday services (through zoom). A diversity of regulars and new people keep appearing, and we get better at doing it, and individuals get more comfortable in the stay-home-isolation-mode of doing Sundays.

Rev Janis continues the morning daily practice (on zoom), which is actually growing in daily attendance. In April there were 232 points of contact, and in May there were 295 individual points of contact and offered 26 'community' affirmative prayers as part of this activity.

Submitted by: Rev. Janis

EDUCATION CORE

Pat Masters' Prosperity Plus III class members met twice online during May with Shelly Dunn acting as host.

Rev Janis started an online 12-week Meditation Seminar on April 15, which will serve as a certificated class for those who desire that, and will allow drop-ins for those who don't care to participate at that level. Presently we have 6 regular participants. We had a guest facilitator on May 13th, Rev Colleen Tanaka from CSL Greater Las Vegas, who presented contemplative meditation a la Joel Goldsmith. Rev Janis followed that up the next week with a contemplative practice after the style of Fr Richard Rohr. It is a joy to have extra weeks to expand the meditation curriculum, because we are doing 2-hour sessions on zoom (instead of the 3-hour classes, which get long sitting in front of a computer monitor, or on a Keith Gorley's book study on Karen Armstrong's Twelve Steps to a Compassionate Life begins Saturday mornings June 6th. The bookstudy will be held in Keith's zoom room. Keith has written an invitation that was included in our e-newsletter around the middle of May. At present, he has approximately 10 persons signed up.

Team Reports for May 2020

Education Core continued ...

The 2020 community survey completed on May 26th (which will be the topic of extended conversation at the June 18 Board Meeting). A survey to request information on level of interest (preferred classes, preferred dates, preferred times) in online classes for the upcoming months was launched in the May 27 newsletter. So far, participation in the educational survey has been light, and very positive.

Submitted by: Rev. Janis

FACILITIES TEAM

Report is included as agenda item.

Submitted by: Mariann Moery

FUNDING TEAM

Team met as part of budget review/reforecast

Submitted by: Mariann Moery

GREETERS

Situation normal, until it wasn't.

Submitted by Janie Hooper

HOST TEAM

Situation normal, until it wasn't.

Submitted by Marya Wheeler

MARKETING AND COMMUNICATIONS TEAM

Update in the Community/Growth Agenda Item.

Submitted by: Mariann Moery

MEMBERSHIP

Nothing to report at this time.

Submitted by: Mariann Moery

MINISTER'S TRAVEL PLANS

No travel occurred in May. None likely in June. Rev Lynne Heygster from Justin TX presented the Sunday message on May 17th on our zoom platform. As of this moment, the recording of Rev Lynne speaking has received the most views on our YouTube channel.

Submitted by: Rev. Janis

MUSIC/SOUND

Our CSLT Orchestra continues to impress with the way they are flowing with the available resources for Sunday performance music, and with the quality of music provided. Leona Freeman graciously recorded her song "Welcome to this place", as our May congregational opening song, with back up by our CSLT Orchestra.

Submitted by: Rev. Janis

NEWCOMERS TEAM

Situation normal, until it wasn't.

Submitted by Marya Wheeler

PRACTITIONER CORE

At present, Shelly Dunn is conducting the bulk of the Sunday morning pre-service meditations and providing platform support twice a month, in addition to other behind the scene tasks.

She plans to facilitate a Wednesday evening short series on Ernest Holmes' This Thing Called You at some point during the summer months. All details to be worked.

Submitted by: Rev. Janis

YOUTH & FAMILY

Situation normal, until it wasn't.

Submitted by Marya Wheeler

Virtual Vision Core - Notes begun June 4, 2020 6:30pm (on zoom)

Participating Live: Marya Wheeler, Chris Wheeler, Rev Janis Farmer

Also Participating: Christina Reed, Carol Nigut

What's the highest vision, highest ideal for Center for Spiritual Living Tucson?

Conversation, Expanding awareness, Driving by the office knowing expansion; Rev Janis on a stage with a curtain behind her, wearing her robes, a stole and lipstick(!), with an old-style cameraman (with a big camera on his shoulder) who looks like Philip; Broadcasting station, lit beacon, the color purple; Many, many sunrises.; Unity, Harmony, Community

What changes, evolves, becomes (releases, moves in or away) as this vision comes into being?

Freedom, Focus, Connectedness, People; One person, one big donation or numerous donations to purchase equipment; Turning heads see new ideas; Profound change as the tide goes out.; Extraneous passes away as we move in to the core; the truth of who we are...

Is there anything else that wants to be known, realized or understood?

We can be Home to new people; Sooner rather than later, imminent; Joy, contentment, satisfaction.; What does God see when it thinks of you and your destiny?; Now is the time

Center for Spiritual Living Tucson

Board Agenda & Reports

June 18, 2020

7 Finance/Stewardship Report

Rev Janis, Interim; Susan Seid, As Soon As Practicable

Executive Summary:

May 2020 was a 5-Sunday month, in which we continued our social isolation practice. Schools remained closed, which means our Sunday services remained virtual. We got better at being entirely online. Our world continued to change radically.

Susan Seid has begun functioning as Treasurer, has begun handling transactions at the bank and signing checks. More transition to occur as soon as we work out how all parties can work in close proximity comfortably.

The Board has agreed to sustain and hold the vision of increased attendance by individuals willing and able to participate (in all ways and on many levels), which allows us opportunities to expand our reach in Tucson.

	<u>Total Sunday Offerings & P+</u>	<u>New Designated Monies</u>	<u>Total Income*</u>	<u>Total Expenses*</u>	<u>Net Income*</u>	<u>\$/Weekly Attendee</u>	<u>Avg Weekly Attendance</u>
May	\$10,062	\$300	\$10,342	\$9,022	\$1,320	\$48.14	42+
April	\$9,660	0	\$10,122	\$10,231 [†]	<109>	57.84	42+
March	\$10,692	0	\$11,806	\$9,408	2,398.00	53.46	40 (5 weeks)
February	\$12,358	40	\$13,344	\$9,288	4,056.00	44.45	70

* Presently we have a stand-alone Facility Fund, Scholarship Fund, a Practitioner Fund, an Opportunity Fund and a Compassionate Heart fund. All are designated and are not considered as part of Total Income or Total Expenses.

[†] Paid out \$1332 in facilitator fees for classes begun in January, set aside \$250 in scholarships & bought class materials.

<u>Cash Balances</u>	<u>May</u>	<u>April</u>	<u>March</u>	<u>February</u>
Chase General Ops Checking	\$9,729	\$9,729	\$9,619	\$19,580
Vantage W. Gen Ops Checking	\$31,484	\$30,651	\$28,010	\$16,479
Chase Education (Savings) Fund	\$0	\$0	\$0	\$0
Vantage W. Education Savings	\$8,627	\$9,021	\$10,631	\$10,057
Chase (Operating) Savings	\$0	\$0	\$0	\$0
VWCU Practitioners' Savings	\$412	\$412	\$412	\$412
Designated Holdings (Music)	\$0	\$0	\$0	\$0
SubTotal	\$50,252	\$49,813	\$48,672	\$46,528
Chase Opportunity Fund [☞]	\$0	\$0	\$0	\$0
Chase Facility Fund Savings	\$1,061	\$1,061	\$1,061	\$1,061
Vantage W. Facility Fund Savings	\$4,719	\$4,718	\$4,718	\$4,716
VWCU Imprmnt/Opportun Fund	\$15,700	15396*	\$16,428	\$16,411
Facility Fund Invest. Acct	\$0	\$0	\$0	\$0
Total	\$71,732	\$70,988	\$70,879	\$68,716

The Gregory School has declined to accept our rental payments for May & June since the school is closed.

[☞] We received an anonymous designated gift, part of which is to be used for 'sustainable' marketing activities. We called this the Opportunity Fund. Out of this account we have funded the website upgrade & partially funded of our Office improvement fund.

*Paid for year of print advertising (\$1,050) in Explorer News, Foothills News, Marana News & Desert Times.

Comparison between May 2019 and May 2020 (May 2019 4-Sunday, May 2020 5-Sunday month):

Attendance/Sunday	DEcreased by	10	online only in 2020, attendance estimated
Offerings/Month	INcreased by	\$2,146	
Offering/person/Sunday	INcreased by	\$10.08	[In May2019 we were birthed from the old office
Total Income	INcreased by	\$1,866	on E River Rd (rent \$1600/mo). May 2019 net
Expenses	DEcreased by	\$399	income <\$935> We found the new office on
Net Income	INcreased by	\$2,255	S Craycroft in early June.]

Center for Spiritual Living Tucson

Board Agenda & Reports

June 18, 2020

Status of the CSLT Facility Fund

Facility Fund Investment Acct Deposits: Initial Deposit \$50,000 (Nov12), Deposit \$10,236 (Mar13) Deposit \$15,188 (Dec13)
 Investment Account closed December 2016 to purchase raw land at 4961 E. 22nd St. On June 3, 2019 we sold our raw land on 22nd St, and have agreed to serve as 'bank' for the buyer for five years with annual payments, on June 3 of each year.

Date	CSLT Contributions	Various Projects & Interest	Personal Donations	\$ Total
Year End 2009				29,365
Year End 2010				48,710
Year End 2011				70,361
Year End 2012	6,800	1,045	1,430	79,636
Matching Fund Reserves			2,900	82,536
Year End 2013 (Inspection)	<1,800>	4,780	3,327	88,843
Year End 2014	<600>	1,789	25,884	115,936
Year End 2015 (Moved to River Rd)	<5,223>	<1,786>	7,109	116,027
Year End 2016 (Purchased land)	<102,024>	2,068	2,440	18,511
Year End 2017 (InvAcctClosed.)		164	1,500	20,175
Year End 2018		112	1,000	21,287
Year End 2019 (sold land & bought office)		(net) <17,146>	200	4,341
January 2020				4,341
February 2020				4,341
March 2020				4,341
April 2020				4,341
May 2020				4,341

Facility Fund expenses to relocate to our Education Center have been completed (for now). In total we spent \$59,330.32 for the downpayment and the repairs required to meet the requirements of our mortgage holder.

A detailed breakdown of expenditures was presented in the January 16th Board minutes.

Budget and Actual expenditures for May, and year to date.

	May 2020		Total	
	Actual	Budget	Actual	Budget
Income				
40100 Contributions				
40101 Sunday Offerings	6,236	10,000	37,760	44,000
40110 Online Contri	3,826	2,000	14,782	10,000
40120 Other Donations			431	0
Total 40100 Contributions	10,062	12,000	52,973	54,000
43101 Facility Rental Income		40	104	200
45010 Interest / Dividend Income	4		24	0
45020 Rewards & Rebates	16		189	0
Total Income	10,082	12,040	53,289	54,200
Expenses				
Total 00 ADMINISTRATION	2,802	5,276	18,493	28,479
Total 02 MINISTER COMPENSATION	1,725	1,725	8,625	8,625
Total 03 MUSIC EXPENSE	1,750	2,042	9,246	10,083
Total 04 MINISTRY EXPENSE	0	40	42	1,300
Total 05 SUNDAY SERVICE EXP	350	310	1,432	2,000
Total 06 TITHING / CHARITABLE GIVING	1,006	1,200	5,297	5,400
Total 07 LEADERSHIP DEVELOPMENT EXP	0	0	0	1,500
Total Expenses	7,633	10,593	43,135	57,387
Net Operating Income	2,449	1,448	10,153	-3,187

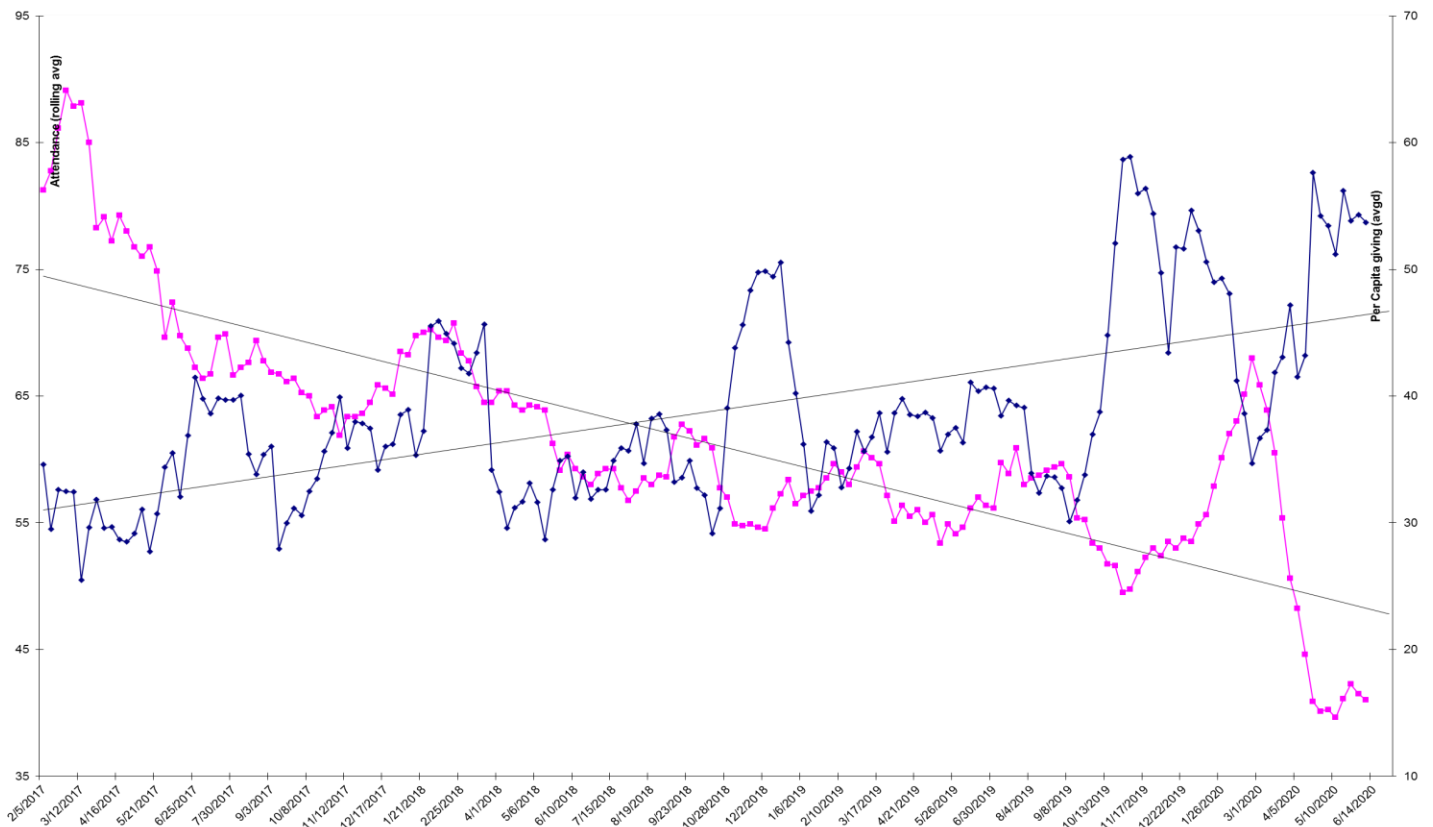
Center for Spiritual Living Tucson

Board Agenda & Reports

June 18, 2020

Other Income				
81000 EDUCATION REV			0	0
81100 EDUCATION TUITION			0	0
81101 Certificated Classes	230	600	4,738	3,000
81102 Non-certificated Classes		300	205	1,500
81160 Scholarship Awards		-30	0	-150
Total 81100 EDUCATION TUITION	230	870	4,943	4,350
81200 EDUCATION EXPENSES			0	0
81201 Materials			-129	0
81202 Facilitator	-675	-450	-2,007	-2,250
81203 Repristration Fees	-630	-90	-630	-450
81260 Scholarship Allocations	-48	30	-297	150
Total 81200 EDUCATION EXPENSES	-1,353	-510	-3,063	-2,550
Total 81000 EDUCATION REV	-1,123	360	1,880	1,800
Total 85000 Bookstore Revenue	-6	50	-324	250
Total 86000 FACILITY FUND REVENUE	0	0	0	0
88000 Opportunity Fund	300		-750	0
Total Other Expenses	-475	0	-2,553	0
Net Other Income	-354	420	3,417	2,110
Net Income	2,096	1,868	13,571	-1,077
less designated	775			
	1,321			
Wednesday, Jun 10, 2020 11:44:30 AM GMT-7 - Accrual Basis				

Even though our contributions are lower than usual, our net income remains positive, in part because the School is not accepting rent payments from us while the school is closed, and we cannot meet on the school property.



pink (lower) line attendance
 blue (upper) line contributions per person per Sunday
 both are rolling averages (over 8 weeks) to reduce the amount of 'noise' in the numbers.