



Board of Trustees

Minutes

May 21, 2020

		Presenter	Duration
1	Call to Order and Evocation	Mariann	5 Min
2	Visioning	Rev. Janis	15 min
3	Checking In	All	5 min
4	Last Month's Minutes	Mariann	Done/0 Min
5	Call to Audience	Mariann	1 Min
6	Finance/Stewardship Report Pages 12-14		
	Discussion of current fiscal status	Rev. J	5 min
7	Review Current Business Items Page 2		
7 a	911 Craycroft update	Rev.J	2 min
7 b	Moving accounts from Chase to Vantage	Rev. J	1 min
7 c	Payment in early June on 22nd St	Rev. J	1 min
8a-h	Major Goal Check-In/Dashboard Page 2	All	15 Min
9	The 2019-20 Planning Cycle Page 3		
9a	Donor gratitude event - Delayed	All	5 min
9b	Planning/Social None in June	All	2 min
9c	Board meeting June 18, 2020 at 5:30	All	0 min
9d	CSLT - planning its 50th anniversary in September	All	15 min
10	New Business for This Meeting Page 3		
11	Tabled Items Page 3		
	Next Steps for Consolidated Campus	Rev. J	0 min
	Board Covenants & Consensus	All	0 min
	Small Group Requirements	All	0 min
12	Additional New Business for this meeting Page 3	Mariann	2 min
13	New Business for Next/Future Meeting Page 3	All	2 Min
14	Sunday's Gratitudes Page 3	All	5 Min
15	Review CIAB Schedule Page 4	All	5 Min
16	Lead Newsletter Articles Page 4	All	2 Min
17	Six Month Look Ahead on Calendar Pages 6-8	All	5 Min
18	Team Reports Pages 9-11	All	5 Min
	Adjourn and Pray out	Rev. Janis	
Present: Mariann Moery, Marya Wheeler, Janie Hooper, Susan Seid ad Rev. Janis			
Absent: No one			
In Service: Scribe - Mariann; High Watch - Rev. Janis			
Guests: None			

		Center for Spiritual Living Tucson						
				Board Minutes				
				May 21, 2020				
1	Call to Order/Evocation					5:30 p.m.		
2	Visioning							
Q: What is the Highest Vision or Highest Ideal for Center for Spiritual Living Tucson?								
Alps. Maria at the start of the Sound of Music. Caramel apples. Birds chirping in the rain in a birdbath; Looks like gathering, smiles, feels like Gods love, smells like taffy making; rainbows reflecting brightness; golden glory; Shared heart connection								
Q: What changes, evolves, or becomes as this highest vision comes into existence?								
Links in a heavy, gold chain. M C Escher stairs. Peace. Love. Joyful congregation; Spaced seating, masks, hand sanitizers to be together again at the Gregory; opening doors, opening flowers, opening gates, opening hearts; seating arrangements, new wooden door frame; HIGH energy, lot of windows and light								
Q: Is there anything else that wants to be known, understood, or realized? What else?								
Astronomy Picture of the Day pictures of the Universe. Immense, beautiful galaxies!; Donations stay up and increase; An owl asks, "Who, who, who are you?"; wicker picnic basket filled with goodies under a checked cloth; It's already in motion								
3	Checking In					All		
4	Last Month's Minutes					Mariann		
5	Call to Audience					Mariann		
6	Finance/Stewardship Report					Rev. J		
		Current financial reporting	Pages 12-14					
		Administrative support	As time & conditions permit, Rev. Janis to begin the search for part-time support.					
		Opportunity Fund contribution	Mariann and Rev. Janis are working on process to create and upload videos					
7	Financial Reporting							
				Report, Decision & Action				
7a	911 S Craycroft facilities update		Our sign has been physically inspected and a report is expected on the two processes to protect from any potential graffiti.					
7b	Moving to Vantage West CU		We have closed the Chase accounts. The Board deferred setting up a money market account until we see the status of income and can physically visit a bank to sign documents.					
7c	22nd Street		First annual payment due in early June. Money will be deposited directly to the Facility Fund account.					
8	Review of Current Activities							
8a	Education		Team Report attached. Rev. Janis plans a quick survey of limited questions asking what type of classes the community would like in the future.					
8b	Youth Program		With services online, there is no activity to report					
8c	Board Status		Susan Seid accepted our invitation to join the Board assuming the office of Treasurer. We gladly welcome her to our group.					

CSLT - Board Agenda - May 21, 2020

		CSLT - Board Agenda - May 21, 2020			
8d	Community & Growth 2020 Credo CSLT inspire spiritual expression in community with all and offers an accepting, loving, and peaceful way of living a joyful, healthier and more abundant life.	CSLT as community. Community growth discussion to continue. The card is printed and ready to be distributed throughout and by the entire community. Distribution to begin once Covid 19 restrictions are removed: Bulletin insert (Pot Luck Sunday(s), Small groups; foyer tables; commercial, academic, military locations to be identified. Physical sites on campus are another possibility later. Ad copy has been submitted and the ad layout have been approved. Ad is appearing.			
	Covid 19	The Center's response: Waiting for local regulations to finalize. Services at the school will be determined by The School's ability to re-open and restrictions on group size. We simply wait and see. As conditions permit we will start the neighborhood circles of contact. Published video is limited to Reminders. Livestream is being researched: it requires investments of money, time and knowledgeable individuals to create and produce weekly.			
	The CSLT Extended Leadership	Conversations on how we want to think about ourselves in the blended world of in-person and online were begun on April 30th. Nothing definite, yet, other than the awareness that this is something whose time has come and we get to figure out how it works for us. Questions are in the Survey.			
8e	Newsletter Statistics	Approximately 50 names were culled from the newsletter contact list. These were individuals who had not opened any e-newsletter in the last 18 months. Our number of apparent subscribers has dropped as a result of this action. 585-590 e-newsletters sent. 233-271 opened (40-43%). 24-35% click-throughs. Still amazing			
8f	Survey 2020	The 2020 Survey is available through a link in the newsletter until May 26th. Results will be collated and analyzed in June. Results will be announced by category of questions in the newsletter. A full report will be presented at the Annual Meeting as well.			
8g	Small Groups	The men's group now meets online 1st & 3rd Thursdays for breakfast, with 6-8 attending. Pat's Prosperity+ usually meeting 1st & 3rd Sundays with 5-8 attending has met online with Shelly. Morning check-in & meditation meets online with 6-10 participating. Keith Gorley is starting a new book study group online on June 6: Karen Armstrong's <i>12 Steps to a Compassionate Life</i> .			
8h	Board Liaisons	Team assignments and report due dates on Page 4			
9	2019-2020 Planning Cycle				
9a	Gratitude Dinner	The annual donor appreciation event scheduled for 3/29 was postponed. It will be re-scheduled later when larger gathers are allowed.			
9b	June Planning/Social	There will not be a planning meeting in June.			
9c	Board	June Board meeting may or may not be online June 18, 2020 at 5:30			
9d	CSLT 50th Anniversary	The anniversary date is September 14th. Celebration planning is to begin when Covid 19 restrictions are clarified. It was agreed the celebration should be seen as a "homecoming" and include recognition of our community's creativity, and the contributions that makes us who we are at 50. A calendar celebrating CSLT participation was recommended and is being explored.			


CSLT - Board Minutes - May 21, 2020

	CSLT - Board Minutes - May 21, 2020								
10	New Business for this meeting								
11	Tabled Items								
	Next steps for Consolidated Community Campus:	Further discussion of this item is tabled until Center and community growth clarifies our needs.							
	Board Covenants	The Board's Covenants and decision making procedures tabled for now.							
	Small group Requirements	Further discussion of this topic tabled for now.							
12	Additional New Business for this meeting.								
13	New Business Items for Next Meeting								
14	Sunday Gratitudes								
	Date	Honoree							
	5/24	Military members and families							
	5/31	Daily meditators							
	6/7	Anniversaries							
	6/14	Bob Sima music							
	6/21	Father's Day							
	6/28	attendees and participants in service during this time							
15	CIAB Schedule Gregory School contact: Mary Babbitt 520 243-3222								
		To be scheduled when we return to The Gregory.							
	5/24								
	5/31								
	6/7								
	6/14								
	6/21								
	6/28								
	Newsletter Articles								
	Due	Who is writing							
	5/24	Rev, Janis							
	5/31	Susan							
	6/7	Marya							
	6/14	Mariann							
	6/21	Janie							
	6/28	Rev. Janis							
	Rotation:	Rev J-->Susan -> Marya--> Mariann-->Janie							
17	Six Month Calendar Review						Starts page 6		

CSLT - Board Minutes - May 21, 2020

		CSLT - Board Minutes - May 21, 2020								
18	Team Reports:						Start page 9			
	Board Liaisons & Team Reports		2019-2020 Board Liaison responsibilities: Revised 4/16/2020 Rev. J. Sunday: Practitioner Core, Education, Admin, Ops Mariann: Chair, Trustees, Marcom, Outreach, Video, Photography, Membership, Bookstore Marya: Vice-Chair, Youth Program, Newcomers, Hosts Susan: Treasurer, Funding Janie: Greeters, Gratitude Banquet, Altared States, Cinema, Hospitality							
	Due	10 days before Board meeting								
	6/8	please email to								
	7/6	mmoery@gmail.com								
	8/10	Thank you!								
Adjourn and Pray Out										

Center for Spiritual Living Tucson

	Sunday	Monday	Tuesday	Wednesday	Thursday	Friday	Saturday
May 2020	3 Service online Prosperity+ online	4	5	6 Meditation Seminar online 5-7	7 Men's Group online Vision Core online	8	9
	10 Service online	11	12	13 Meditation Seminar online 5-7	14	15	16
	17 Rev Lynne Heygster from Justin TX Service online- Prosperity + online	18	19	20 Meditation seminar online 5-7	21 Men's Group online? Board 5:30 online?	22	23
	24	25	26	27 Meditation seminar online 5-7	28	29	30
	31 5th Sunday	June 1	2	3 Meditation seminar online 5-7	4 Men's group Vision Core online	5	6 K Gorley - 12 Steps to a Compassionate Life (online)
	Sunday	Monday	Tuesday	Wednesday	Thursday	Friday	Saturday
June 2020	7 Potluck Sunday Pat's P+3 Group	July 1st	9	10 Meditation seminar online 5-7	11	12	13 K Gorley - 12 Steps to a Compassionate Life (Online)
	14 Bob Sima, music & message, online.	15	16	17 Meditation seminar online 5-7	18 Men's Group 9 Board 5:30	19	20 K Gorley - 12 Steps to a Compassionate Life (online)
	21 Pat's +3 Group online	22	23	24 Meditation seminar online 5-7	25 Youth Ministry Team 6:15	26	27 K Gorley - 12 Steps to a Compassionate Life (Online)
	28 Cinema (if groups are okay)	29	30	July 1st Online Meditation seminar ends	2 Men's Group 9 a m Vision Core	3	4 

Center for Spiritual Living Tucson

	Sunday	Monday	Tuesday	Wednesday	Thursday	Friday	Saturday
July 2020	5 Potluck Sunday Pat's P+3 Group	6	7	8	9	10	11 K Gorley - 12 Steps to a Compassionate Life (Online)
	12 What We Believe 1:30	13	14	15	16 Men's Group 9 Board 5:30	17	18 K Gorley - 12 Steps to a Compassionate Life (Online)
	19 Lunch Bunch Pat's +3 Group	20	21	22	23 Youth Ministry Team 6:15	24	19 K Gorley - 12 Steps to a Compassionate Life (Online)
	26 Cinema	27	28	29	30	31	August 1st K Gorley - 12 Steps to a Compassionate Life (Online)
	Sunday	Monday	Tuesday	Wednesday	Thursday	Friday	Saturday
August 2020	2 - Potluck Pat Masters' P+3	3	4	5	6 Men's Group 9 Vision Core 6:30	7	8 K Gorley - 12 Steps to a Compassionate Life (Online)
	9 What We Believe	10	11	12	13	14	15 K Gorley - 12 Steps to a Compassionate Life (Online)
	16 Lunch Bunch Pat's P+3 Group	17	18	19	20 Men's Group 9 Board 5:30	21	22 K Gorley - 12 Steps to a Compassionate Life (Online)
	23 Cinema	24	25	26	27 Youth Ministry Team 6:15	28	29 K Gorley - 12 Steps to a Compassionate Life (Online)

Center for Spiritual Living Tucson

	Sunday	Monday	Tuesday	Wednesday	Thursday	Friday	Saturday
September 2020	30	31	Sept. 1	2	3 Men's Group 9 Vision Core 6:30	4	5
	6 Pot Luck Pat's Group	7 Labor Day	8	9	10	11	12
	13 What We Believe	14	15	16	17 Men's Group 9 Board 5:30	18	19
	20 Lunch Bunch Pat's Group	21	22	23	24 Youth Ministry Team 6:15	25	26
	27 Cinema	28	29	30	October 1 Men's Group - 9 a.m. Vision Core 6:30	2	3
	Sunday	Monday	Tuesday	Wednesday	Thursday	Friday	Saturday
October 2020	4 Pot Luck Pat's Groups	5	6	7	8	9	10
	11 What We Believe	12	13	14	15 Men's Group 9 Board 5:30	16	17
	18 Lunch Bunch Pat's Group	19	20	21	22 Youth Ministry Team 6:15	23	24
	25 Cinema	26	27	28	29	30	31

CSLT - Board Minutes - May 21, 2020
Team Reports for April 2020

ADMINISTRATION

All non-essential activities continue being deferred until 'afterwards' (whatever that means.)

The monthly Board Agenda, production of the Board Minutes and uploading to website has been handed off. Our webmaster, Graeme tidies up errors we find and keeps our web presence looking sharp. Mariann sent him the Board Member swap outs in late-April and the changes have been made. Thank you, Mariann M! Maria S. uploads the online calendar & blog, and makes the Sacred Cinema bulletin insert (when we have Cinema). Thank you Maria!

Kim, our new bookkeeper, continues to delight us with her competence. Bank move nearly complete. A few 'hard to move' items remain

Submitted by: Rev. Janis

ALTARED STATES

Susan Seid is a very welcome addition and so appreciated. We could still use one more person to cover travel and other absences.

Submitted by Janie Hooper

BOOKSTORE

Submitted by Wendie Arison

CINEMA

Oh hiatus until "afterwards."

Submitted by Janie Hooper

COMPASSIONATE CARE

With in-person contact deferred, the Compassionate Heart team was basically asked to 'stand down' even further from all interpersonal contact, after the middle of March. Some meal, care and transportation services are being provided in very specific cases.

Submitted by: Rev. Janis

COMMUNITY BUILDERS OUTREACH

Card is printed (and beautiful), and awaits distribution when Covid 19 restrictions are lifted.

Submitted by: Mariann Moery

E-BAY STORE

On hiatus until a manager is in place.

Submitted by: Mariann Moery

ECCLESIASTICAL CORE

Shelly continues to do the bulk of the online Sunday morning meditations.

We continued online Sunday services (through zoom). A diversity of regulars and new people keep appearing, and we get better at doing it, and individuals get more comfortable in the stay-home-isolation-mode of doing Sundays.

Rev Janis continues the morning daily practice (on zoom), which continues to be well received with between 6 and 12 persons choosing to participate six days each week.

Submitted by: Rev. Janis

EDUCATION CORE

Foundations of the Science of Mind shifted to online beginning March 30. They completed on April 20th online, with four persons meeting all the requirements. (One in Vermont, one in Ontario Canada & two in Tucson!)

Pat Masters' Prosperity Plus III class members met once online during April with Shelly Dunn acting as host.

Rev Janis started an online 12-week Meditation Seminar on April 15, which will serve as a certificated class for those who desire that, and will allow drop-ins for those who don't care to participate at that level. Presently we have 6 regular participants. We had a guest facilitator, Whitney Vale, on April 29, who worked with the attendees in writing poetry (haiku & non-rhyming odes to common objects) as meditation. We have another guest facilitator planned for May 13th, Rev Colleen Tanaka from CSL Greater Las Vegas, who will present contemplative meditation a la Joel Goldsmith.

Keith Gorley's book study on Karen Armstrong's Twelve Steps to a Compassionate Life begins Saturday mornings June 6th. The bookstudy will be held in Keith's zoom room. Keith has written an invitation that will be included in our e-newsletter around the middle of May.

Submitted by: Rev. Janis

FACILITIES TEAM

Report is included as agenda item.

Submitted by: Mariann Moery

FUNDING TEAM

Team met as part of budget review/reforecast

Submitted by: Mariann Moery

GREETERS

Situation normal, until it wasn't.

Submitted by Janie Hooper

HOST TEAM

Situation normal, until it wasn't.

Submitted by Marya Wheeler

MARKETING AND COMMUNICATIONS TEAM

Update in the Community/Growth Agenda Item.

Submitted by: Mariann Moery

MEMBERSHIP

Nothing to report at this time.

Submitted by: Mariann Moery

MINISTER'S TRAVEL PLANS

No travel in April. None likely in May. Rev Lynne Heygster from Justin TX will present the Sunday message on May 17th on our zoom platform.

Submitted by: Rev. Janis

MUSIC/SOUND

Our CSLT Orchestra continues to impress with the way they are flowing with the available resources for Sunday performance music, and with the quality of music provided. Leona Freeman graciously recorded her song "Welcome to this place", as our May congregational opening song, with back up by our CSLT Orchestra.

Submitted by: Rev. Janis

NEWCOMERS TEAM

Submitted by Marya Wheeler

PRACTITIONER CORE

At present, Shelly Dunn is conducting the bulk of the Sunday morning pre-service meditations and providing platform support twice a month, in addition to other behind the scene tasks.

She plans to facilitate a Wednesday evening short series on Ernest Holmes' This Thing Called You during the summer months. All details to be worked.

Submitted by: Rev. Janis

YOUTH & FAMILY

Situation normal, until it wasn't.

Submitted by Marya Wheeler

Team Reports for April 2020

Virtual Vision Core, begun May 7, 2020

Participating: Christina Reed, Carol Nigut, Barbara McGill, Rev Janis

What's the highest vision, highest ideal for Center for Spiritual Living Tucson?

The beginning is near! (image); Community, collaboration, joy, uplifting all, participants and the community as a whole; Enveloping Primordial Light, relishing, at once, uncertainty & creation, sanctuary movement; Lotus blossom opening, new way of being.

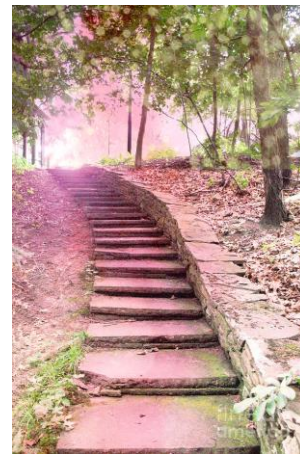


What changes, evolves, becomes (releases, moves in or away) as this vision comes into being?

Seeds of new beginnings start small; Willingness and motivation (desire) as God's inspiration moves in and through us. BE the change you want to see; Crude exteriors crumbling; frangible as we practice, recognizing stories and releasing them; Rigid structures collapse, fluid & flexible, inviting ones arise

Is there anything else that wants to be known, realized or understood?

Shallow (easy-to-walk) stone steps progressing up a hill (image);



NOW is the time; Grateful for deepening practice & opportunities, I AM sanctuary, allowing Emergence; Song: For the Longest Time.

Center for Spiritual Living Tucson

Board Minutes & Reports

May 21, 2020

7 Finance/Stewardship Report

Rev Janis, Interim; Susan Seid, As Soon As Practicable

Executive Summary:

April 2020 was a 4-Sunday month, in which we continued our social isolation practice. Schools remained closed, which means our Sunday services remained virtual. We got better at being entirely online. Our world changed radically.

Susan Seid accepted the position of Treasurer, and as soon as she can safely interact with the bookkeeper and Rev Janis at the office, and handle transactions at the bank, we will do so.

The Board has agreed to sustain and hold the vision of increased attendance by individuals willing and able to participate (in all ways and on many levels), this allows us opportunities to expand our reach in Tucson.

	New						
	<u>Total Sunday Offerings & P+</u>	<u>Designated Monies</u>	<u>Total Income*</u>	<u>Total Expenses*</u>	<u>Net Income*</u>	<u>\$/Weekly Attendee</u>	<u>Avg Weekly Attendance</u>
April	9,660	0	10,122	10231[†]	<109>	57.84	42+
March	10,692	0	11,806	9,408	2,398	53.46	40 (5 weeks)
February	\$12,358	40	13,344	9,288	4,056	44.45	70
January	\$10,199	0	14,002	10,012	3,990	38.34	67
December	\$16,791	12,000	17,741	10,803	6,938	61.96	54

* Presently we have a stand-alone Facility Fund, Scholarship Fund, a Practitioner Fund, an Opportunity Fund and a Compassionate Heart fund. All are designated and are not considered as part of Total Income or Total Expenses.

[†] Paid out \$1332 in facilitator fees for classes begun in January, set aside \$250 in scholarships & bought class materials.

<u>Cash Balances</u>	<u>April</u>	<u>March</u>	<u>February</u>	<u>January</u>
Chase General Ops Checking	\$9,729	\$9,619	\$19,580	\$20,375
Vantage W. Gen Ops Checking	\$30,651	\$28,010	\$16,479	\$11,712
Chase Education (Savings) Fund	\$0	\$0	\$0	\$4,421
Vantage W. Education Savings	\$9,021	\$10,631	\$10,057	\$4,796
Chase (Operating) Savings	\$0	\$0	\$0	\$0
VWCU Practitioners' Savings	\$412	\$412	\$412	\$412
Designated Holdings (Music)	\$0	\$0	\$0	\$0
SubTotal	\$49,813	\$48,672	\$46,528	\$41,716
Chase Opportunity Fund [☞]	\$0	\$0	\$0	\$16,401
Chase Facility Fund Savings	\$1,061	\$1,061	\$1,061	\$361
Vantage W. Facility Fund Savings	\$4,718	\$4,718	\$4,716	\$5,416
VWCU Imprmnt/Opportun Fund	\$15,396 *	\$16,428	\$16,411	\$8
Facility Fund Invest. Acct	\$0	\$0	\$0	\$0
Total	\$70,988	\$70,879	\$68,716	\$63,902

[☞] We received an anonymous designated gift, part of which is to be used for 'sustainable' marketing activities. We called this the Opportunity Fund. Out of this account we have funded the website upgrade & partially funded of our Office improvement fund.

*Paid for year of print advertising (\$1,050) in Explorer News, Foothills News, Marana News & Desert Times.

Comparison between April 2019 and April 2020 (both 4-Sunday months):

Attendance/Sunday	DEcreased by	14	online only in 2020, attendance estimated
Offerings/Month	INcreased by	\$69	
Offering/person/Sunday	INcreased by	\$15.21	[In 2019 we were still renting the old office
Total Income	DEcreased by	\$1,419	on E River Rd @ \$1600/mo, we had \$1400+
Expenses	DEcreased by	\$257	in education income & sold \$440 in books.]
Net Income	DEcreased by	\$1,162	

Status of the CSLT Facility Fund

Center for Spiritual Living Tucson

Board Minutes & Reports

May 21, 2020

Facility Fund Investment Acct Deposits: Initial Deposit \$50,000 (Nov12), Deposit \$10,236 (Mar13) Deposit \$15,188 (Dec13)
 Investment Account closed December 2016 to purchase raw land at 4961 E. 22nd St. On June 3, 2019 we sold our raw land on 22nd St, and have agreed to serve as 'bank' for the buyer for five years with annual payments, on June 3 of each year.

Date	CSLT Contributions	Various Projects & Interest	Personal Donations	\$ Total
Year End 2009				29,365
Year End 2010				48,710
Year End 2011				70,361
Year End 2012	6,800	1,045	1,430	79,636
Matching Fund Reserves			2,900	82,536
Year End 2013 (Inspection)	<1,800>	4,780	3,327	88,843
Year End 2014	<600>	1,789	25,884	115,936
Year End 2015 (Moved to River Rd)	<5,223>	<1,786>	7,109	116,027
Year End 2016 (Purchased land)	<102,024>	2,068	2,440	18,511
Year End 2017 (InvAcctClosed.)		164	1,500	20,175
Year End 2018		112	1,000	21,287
Year End 2019 (sold land & bought office)		(net) <17,146>	200	4,341
January 2020				4,341
February 2020				4,341
March 2020				4,341
April 2020				4,341

Facility Fund expenses to relocate to our Education Center have been completed (for now). In total we spent \$59,330.32 for the down payment and the repairs required to meet the requirements of our mortgage holder. A detailed breakdown of expenditures was presented in the January 16th Board minutes.

Budget and Actual expenditures for April, and year to date.

	Jan 2020		Feb 2020		Mar 2020		Apr 2020		Total	
	Actual	Budget	Actual	Budget	Actual	Budget	Actual	Budget	Actual	Budget
Income										
40100 Contributions										
40101 Sunday Offerings	7,169	8,000	9,712	8,000	9,103	10,000	5,540	8,000	31,524	34,000
40110 Online Contr	2,599	2,000	2,646	2,000	1,589	2,000	4,121	2,000	10,956	8,000
40120 Other Donations	431								431	0
Total 40100 Contributions	10,199	10,000	12,358	10,000	10,692	12,000	9,660	10,000	42,910	42,000
Total Income	10,235	10,040	12,523	10,040	10,766	12,040	9,682	10,040	43,206	42,160
Expenses										
Total 00 ADMINISTRATION	3,992	5,449	3,996	5,247	4,286	7,263	3,662	5,243	15,936	23,203
Total 02 MINISTER COMPENSATION	1,725	1,725	1,725	1,725	1,725	1,725	1,725	1,725	6,900	6,900
Total 03 MUSIC EXPENSE	1,810	1,852	1,910	1,952	1,920	2,042	1,856	2,195	7,496	8,041
Total 04 MINISTRY EXPENSE	0	40	42	1,090	0	40	0	90	42	1,260
Total 05 SUNDAY SERVICE EXP	350	310	200	460	332	460	200	460	1,082	1,690
Total 06 TITHING / CHARITABLE GIVING	1,020	1,000	1,236	1,000	1,069	1,200	966	1,000	4,291	4,200
Total 07 LEADERSHIP DEVELOPMENT EXP	0	1,500	0	0	0	0	0	0	0	1,500
Total Expenses	8,897	11,876	9,109	11,474	9,332	12,730	8,409	10,713	35,747	46,794
Net Operating Income	1,338	-1,836	3,414	-1,434	1,434	-690	1,273	-673	7,459	-4,634
Other Income										
81100 EDUCATION TUITION										
81101 Certificated Classes	3,214	600	200	600	664	600	430	600	4,508	2,400
81102 Non-certificated Classes	95	300	132	300	8	300	-30	300	205	1,200
81160 Scholarship Awards		-30		-30		-30		-30	0	-120
Total 81100 EDUCATION TUITION	3,309	870	332	870	672	870	400	870	4,713	3,480
81201 Materials							-129		-129	0
81202 Facilitator		-450		-450		-450	-1,332	-450	-1,332	-1,800
81203 Registration Fees		-90		-90		-90		-90	0	-360
81260 Scholarship Allocations		30		30		30	-250	30	-250	120
Total 81200 EDUCATION EXPENSES	0	-510	0	-510	0	-510	-1,710	-510	-1,710	-2,040

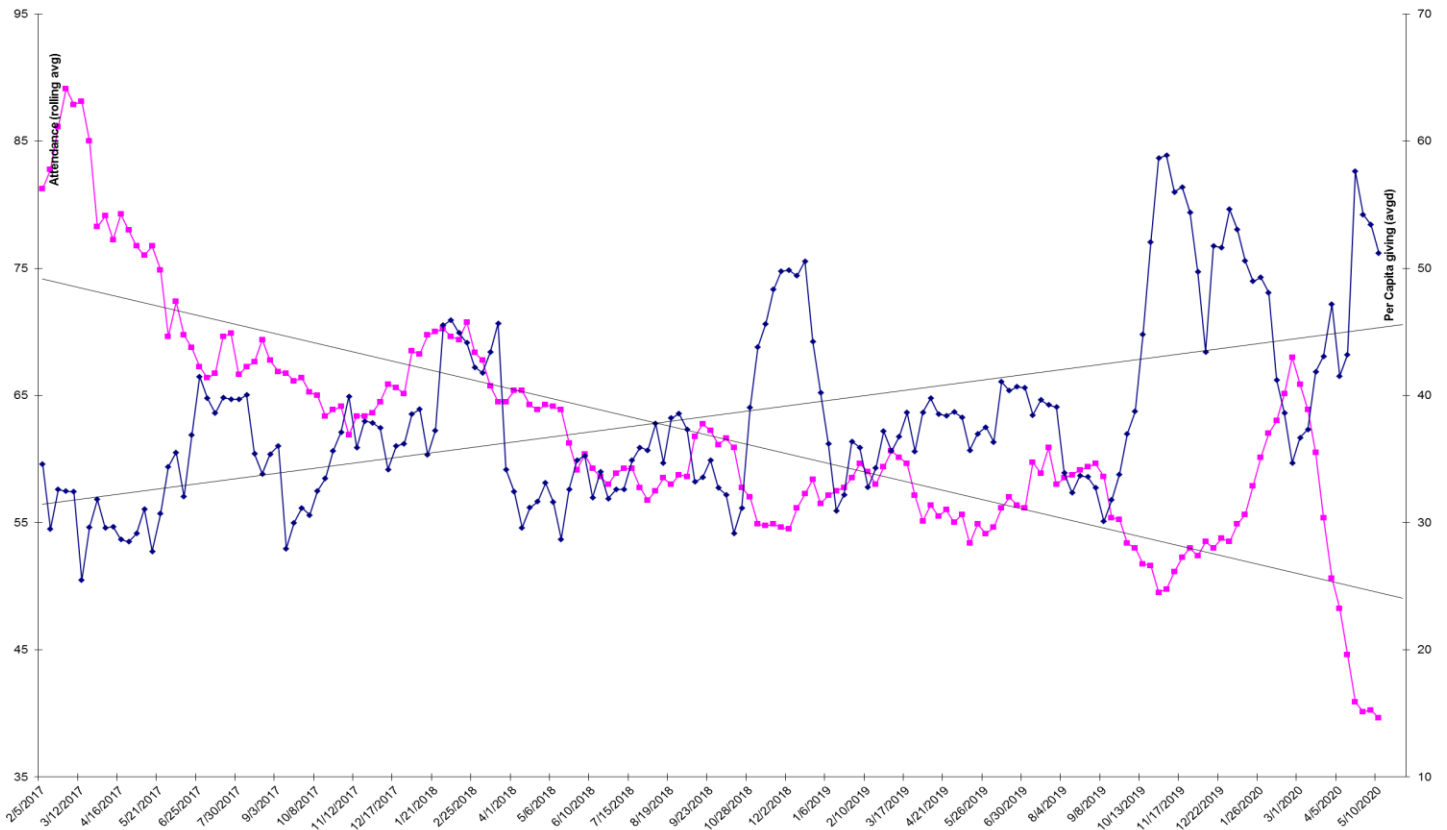
Center for Spiritual Living Tucson

Board Minutes & Reports

May 21, 2020

Total 81000 EDUCATION REV	3,309	360	332	360	672	360	-1,310	360	3,003	1,440
Total 83000 SPECIAL EVENT REVENUE	0	0	40	0	-40	0	0	0	0	0
Total 84200 SPIRITUAL CINEMA REVENUE	17	10	41	15	0	10	0	15	58	50
Total 85000 Bookstore Revenue	-675	50	97	50	332	50	-72	50	-318	200
Total 86000 FACILITY FUND REVENUE	0	0	0	0	0	0	0	0	0	0
88000 Opportunity Fund							-1,050		-1,050	0
Total Other Income	2,651	420	510	425	964	420	-2,432	425	1,693	1,690
Other Expenses										
90000 Mortgage-Principle Offset	-502		-504		-538		-533		-2,078	0
Total Other Expenses	-502	0	-504	0	-538	0	-533	0	-2,078	0
Net Other Income	3,153	420	1,015	425	1,502	420	-1,899	425	3,771	1,690
Net Income	4,492	-1,416	4,429	-1,009	2,936	-270	-626	-248	11,230	-2,944
less designated	-502		-504		-538		517		-1,027	
true net	3,990		3,925		2,398		-109		10,203	

Wednesday, May 13, 2020 11:47:46 AM GMT-7 - Accrual Basis



pink (lower) line attendance

blue (upper) line contributions per person per Sunday

both are rolling averages (over 8 weeks) to reduce the amount of 'noise' in the numbers.