


| | | | | |
|-------------|--|--------------------|--------------------------|-----------------|
| p |  | | Board of Trustees | |
| | | | Minutes | |
| | | | April 16, 2020 | |
| | | | Presenter | Duration |
| 1 | Call to Order and Evocation | | Mariann | 5 Min |
| 2 | Visioning | | Rev. Janis | 15 min |
| 3 | Checking In | | All | 5 min |
| 4 | Last Month's Minutes | | Mariann | Done/0 Min |
| 5 | Call to Audience | | Mariann | 1 Min |
| 6 | Finance/Stewardship Report | Pages 10-12 | | |
| | Discussion of current fiscal status | | Rev. J | 5 min |
| 7 | Review Current Business Items | Page 2 | | |
| 7 a | 911 Craycroft update | | Rev.J | 2 min |
| 7 b | Moving accounts from Chase to Vantage | | Rev. J | 1 min |
| 8a-h | Major Goal Check-In/Dashboard | Page 2 | All | 15 Min |
| 9 | The 2019-20 Planning Cycle | Page 3 | | |
| 9a | Donor gratitude event - Delayed | | All | 5 min |
| 9b | Planning/Social None to be held in May | | All | 2 min |
| 9c | Board meeting May 21, 2020 at 5:30 - online | | All | 0 min |
| 9d | CSLT - planning its 50th anniversary in September | | All | 15 min |
| 10 | New Business for This Meeting | Page 3 | | |
| 11 | Tabled Items | Page 3 | | |
| | Next Steps for Consolidated Campus | | Rev. J | 0 min |
| | Board Covenants & Consensus | | All | 0 min |
| | Small Group Requirements | | All | 0 min |
| 12 | Additional New Business for this meeting | Page 3 | Mariann | 2 min |
| 13 | New Business for Next/Future Meeting | Page 3 | All | 2 Min |
| 14 | Sunday's Gratitudes | Page 4 | All | 5 Min |
| 15 | Review CIAB Schedule | Page 4 | All | 5 Min |
| 16 | Lead Newsletter Articles | Page 4 | All | 2 Min |
| 17 | Six Month Look Ahead on Calendar | Page 5-6 | All | 5 Min |
| 18 | Team Reports | Page 7-9 | All | 5 Min |
| | Adjourn and Pray out | | Rev. Janis | |
| | Present: Mariann Moery, Marya Wheeler, Janie Hooper, Rev. Janis | | | |
| | Absent: No one | | | |
| | In Service: Rev. Janis High Watch, Mariann - Scribe | | | |
| | Guests: Susan Seid | | | |


| Center for Spiritual Living Tucson | | | | | | | | | | |
|--|-------------------------------------|------------------|--|--|--|--|--|--|-----------|--|
| p | | | | Board Minutes | | | | | | |
| | | | | April 16,2020 | | | | | | |
| 1 | Call to Order/Evocation | | | | | | | | 5:30 p.m. | |
| 2 | Visioning | Not done. | | | | | | | | |
| Q: What is the Highest Vision or Highest Ideal for Center for Spiritual Living Tucson? | | | | | | | | | | |
| Yellow brick road leading to a beautiful bronze wrought iron gate that is wide open; Vibrancy – Bright light expanding awareness throughout Tucson. Connectedness; Seed pod struggling to burst open and spread like cottonseed fluff; White spires, multi-media. Balloons Strawberries. Love, Joy, Abundance; Large sun and moon both in the sky at the same time, tasting cherries | | | | | | | | | | |
| Q: What changes, evolves, or becomes as this highest vision comes into existence? | | | | | | | | | | |
| Happy feet (the movie), singing, laughter, beauty; People emerging from a cloud asking Why? What? Looking to fill a void; More people home in on CLST; Re-branding, Peace, Roses, happiness, Flow; Earth begins to rotate at a different angle -perspectives changing now | | | | | | | | | | |
| Q: Is there anything else that wants to e known, understood, or realized? What else? | | | | | | | | | | |
| Time and space are constructs, now is all there is; Aerial view of a group of people in a circular bunch. Attracting people outside of it into the group; It becomes the norm; Love, Knowledge, Gray Mater, Sense of vacuum -> Dick’s legacy being filled; We are not alone, God is here with us NOW. | | | | | | | | | | |
| 3 | Checking In | | | | | | | | All | |
| 4 | Last Month's Minutes | | | | | | | | Mariann | |
| 5 | Call to Audience | | | | | | | | Mariann | |
| 6 | Finance/Stewardship Report | | | | | | | | Rev. J | |
| | Current financial reporting | | | Pages 10-12 | | | | | | |
| | Administrative support | | | As time & conditions permit, Rev. Janis to begin the search for part-time support. | | | | | | |
| | Opportunity Fund contribution | | | Mariann and Janis are working on process to create and upload videos | | | | | | |
| 7 | Financial Reporting | | | | | | | | | |
| Report, Decision & Action | | | | | | | | | | |
| 7a | 911 S Craycroft facilities update | | | Our sign has been physically inspected and a report is expected on the two processes to protect from any potential graffiti. | | | | | | |
| 7b | Moving to Vantage West CU | | | We have closed the Chase accounts. The Board deferred setting up a money market account until we see the status of income and can physically visit a bank to sign documents. | | | | | | |
| 8 | Review of Current Activities | | | | | | | | | |
| 8a | Education | | | Team Report attached. | | | | | | |
| 8b | Youth Program | | | With services online, there is no activity to report | | | | | | |
| 8c | Board Status | | | Dick Laird resignation was noted and accepted with a feeling of loss for his amazing contributions. A letter of appreciation will be sent from the Board and published in the next newsletter. Susan Seid was warmly welcomed to the Board as a new member and Treasurer. | | | | | | |

| | | CSLT - Board Minutes, April 16, 2020 | |
|----|---|--|--|
| 8d | Community & Growth 2020 Credo CSLT inspire spiritual expression in community with all and offers an accepting, loving, and peaceful way of living a joyful, healthier and more abundant life. | CSLT as community. Community growth discussion to continue. The card is printed and ready to be distributed throughout and by the entire community. Distribution to begin once Covid 19 restrictions are removed: Bulletin insert (Pot Luck Sunday(s), Small groups; foyer tables; commercial, academic, military locations to be identified. Physical sites on campus are another possibility later. Ad copy has been submitted and the ad layout have been approved. Ad should be appearing. | |
| | Covid 19 | The Center's response: Service and Foundation classes have been successfully moved online. Other activities may be as well. Some events are being postponed or cancelled as health reasons require. As conditions permit we will start the neighborhood circles of contact. | |
| 8e | Newsletter Statistics | 629-632 newsletters sent. 211-290 opened (34-46%). 23=36% clickthroughs. Amazing. | |
| 8f | Survey 2020 | The 2020 Survey has been reviewed and Mariann will update on Constant Contact for distribution. An early May distribution date was determined. Intro to include a request to answer with the perspective of having returned to The Gregory and normal gatherings. | |
| 8g | Small Groups | The men's group meets 1st & 3rd Thursdays for breakfast, with 6-8 attending now online. Pat's Prosperity+ usually meeting 1st & 3rd Sundays with 5-8 attending also meeting online with Shelly. 7 home study groups of INTO THE MAGIC SHOP which started in March with 3-5 persons attending each group have completed or ended. With the exception of morning mediation online, no new groups will form until Covid 19 | |
| 8h | Board Liaisons | Team assignments and report due dates on Page 4 | |
| 9 | 2019-2020 Planning Cycle | | |
| 9a | Gratitude Dinner | The annual donor appreciation event scheduled for 3/29 was postponed. Announcement letters were signed & mailed to all. It will be re-scheduled later when larger gathers are allowed. | |
| 9b | May Planning/Social | No planning social to be held in May | |
| 9c | Board | May Board meeting will be online Thursday May 21, 2020 at 5:30 | |
| 9d | CSLT 50th Anniversary | The anniversary date is September 14th. Celebration planning is beginning now. It was agreed the celebration should be seen as a "homecoming" and include recognition of the creativity of our community, and the contributions that makes to our expression of who we are at 50. | |
| 10 | New Business for this meeting | | |
| 11 | Tabled Items | | |
| | Next steps for Consolidated Community Campus: | Further discussion of this item is tabled until Center and community growth clarifies our needs. | |
| | Board Covenants | The Board's Covenants and decision making procedures tabled for now. | |
| | Small group Requirements | Further discussion of this topic tabled for now. | |
| 12 | Additional New Business for this meeting. | | |
| 13 | New Business Items for Next Meeting | | |

CSLT - Board Minutes- April 16, 2020

| | | | | | | | | | | |
|-----------|--|---|--|--|--|----------------------|--|--|--|--|
| | | CSLT - Board Minutes- April 16, 2020 | | | | | | | | |
| 14 | Sunday Gratitudes | | | | | | | | | |
| | Date | Honoree | | | | | | | | |
| | 4/19 | All participants in Home Study Groups | | | | | | | | |
| | 4/26 | Foundation class graduates | | | | | | | | |
| | 5/3 | Anniversaries | | | | | | | | |
| | 5/10 | Mother's Day | | | | | | | | |
| | 5/17 | All the people who have responded and stayed on the job | | | | | | | | |
| | 5/24 | music | | | | | | | | |
| | | | | | | | | | | |
| 15 | CIAB Schedule Gregory School contact: Mary Babbitt 520 243-3222 | | | | | | | | | |
| | | To be confirmed when we return to The Gregory. | | | | | | | | |
| | 4/19 | Marya/Marya | | | | | | | | |
| | 4/26 | Janie/Mariann | | | | | | | | |
| | 5/3 | | | | | | | | | |
| | 5/10 | | | | | | | | | |
| | 5/17 | | | | | | | | | |
| | 5/24 | | | | | | | | | |
| | | | | | | | | | | |
| | Newsletter Articles | | | | | | | | | |
| | Due | Who is writing | | | | | | | | |
| | 4/19 | Rev. Janis | | | | | | | | |
| | 4/26 | Marya | | | | | | | | |
| | 5/3 | Mariann | | | | | | | | |
| | 5/10 | Janie | | | | | | | | |
| | 5/17 | Rev. Janis | | | | | | | | |
| | 5/24 | Marya | | | | | | | | |
| | | | | | | | | | | |
| | Rotation: | Rev J--> -> Marya--> Mariann-->Janie | | | | | | | | |
| 17 | Six Month Calendar Review | | | | | Starts page 5 | | | | |
| 18 | Team Reports: | | | | | Start page 7 | | | | |
| | Board Liaisons & Team Reports | | 2019-2020 Board Liaison responsibilities: Revised 4/16/2020 Rev. J. Sunday: Practitioner Core, Education, Admin, Ops Mariann: Chair, Trustees, Marcom, Outreach, Video, Photography, Membership, Bookstore Marya: Vice-Chair, Youth Program, Newcomers, Hosts Susan: Treasurer, Funding Janie: Greeters, Gratitude Banquet, Altared States, Cinema, Hospitality | | | | | | | |
| | | | | | | | | | | |
| | Due | 10 days before Board meeting | | | | | | | | |
| | 5/11 | please email to | | | | | | | | |
| | 6/8 | mmoery@gmail.com | | | | | | | | |
| | 7/6 | Thank you! | | | | | | | | |
| | | | | | | | | | | |
| | Adjourn and Pray Out | | | | | | | | | |
| | | | | | | | | | | |

Center for Spiritual Living Tucson

| | Sunday | 29 | Tuesday | Wednesday | Thursday | Friday | Saturday |
|-----------------|---------------------------------------|--|-----------|---|---|----------|---|
| p April 2020 | 29 5th Sunday Cinema postponed | 30 Foundations 6-9 online | 31 | 4/1 Keith Gorley R W Trine <i>In Tune with the Infinite</i> | 2 Men's Group 9 Vision Core 6:30 virtual only | 3 | 4 |
| | 5 Service online | 6 Foundations 6-9 online | 7 | 8 R W Trine last class 4-5:30 | 9 | 10 | 11 |
| | 12 Service online | 13 Foundations 6-9 last class - online | 14 | 15 Meditation Seminar 5-7 | 16 Men's Group online | 17 | 18 |
| | 19 Service online | 20 | 21 | 22 Meditation Seminar online 5- | 23 | 24 | 25 |
| | 26 Service online ? Cinema ? | 27 | 28 | 29 Meditation Seminar online 5- | 30 | May 1 | 2 |
| | Monday | Tuesday | Wednesday | Thursday | Friday | Saturday | |
| May 2020 | 3 Service online Prosperity+ online | 4 | 5 | 6 Meditation Seminar online 5- | 7 Men's Group online Vision Core online | 8 | 9 |
| | 10 Service online | 11 | 12 | 13 Meditation Seminar online 5- | 14 | 15 | 16 |
| | 17 Service online Prosperity + online | 18 | 19 | 20 Meditation seminar online 5-7 | 21 Men's Group online? Board 5:30 online? | 22 | 23 |
| | 24 Cinema ? | 25 | 26 | 27 Meditation seminar online 5- | 28 | 29 | 30 |
| | 31 5th Sunday | June 1 | 2 | 3 Meditation seminar online 5- | 4 Men's group Vision Core online | 5 | 6 |
| | Sunday | Monday | Tuesday | Wednesday | Thursday | Friday | Saturday |
| June 2020 | 7 Potluck Sunday Pat's P+3 Group | July 1st | 9 | 10 Meditation seminar online 5- | 11 | 12 | 13 |
| | 14 What We Believe 1:30 | 15 | 16 | 17 Meditation seminar online 5- | 18 Men's Group 9 Board 5:30 | 19 | 20 |
| | 21 Lunch Bunch Pat's +3 Group | 22 | 23 | 24 Meditation seminar online 5- | 25 Youth Ministry Team 6:15 | 26 | 27 |
| | 28 Cinema | 29 | 30 | July 1st Online Meditation seminar ends | 2 Men's Group 9 a m Vision Core | 3 | 4  |

Center for Spiritual Living Tucson

| | Sunday | Monday | Tuesday | Wednesday | Thursday | Friday | Saturday |
|-----------------------|-------------------------------------|--------------------|----------------|-----------|--|--------|-------------------|
| July 2020 | 5 Potluck Sunday Pat's P+3 Group | 6 | 7 | 8 | 9 | 10 | 11 |
| | 12 What We Believe 1:30 | 13 | 14 | 15 | 16 Men's Group 9 Board 5:30 | 17 | 18 |
| | 19 Lunch Bunch Pat's +3 Group | 20 | 21 | 22 | 23 Youth Ministry Team 6:15 | 24 | 25 |
| | 26 Cinema | 27 | 28 | 29 | 30 | 31 | August 1st |
| | | | | | | | |
| | Sunday | Monday | Tuesday | Wednesday | Thursday | Friday | Saturday |
| August 2020 | 2 - Potluck Pat Masters' P+3 | 3 | 4 | 5 | 6 Men's Group 9 Vision Core 6:30 | 7 | 8 |
| | 9 What We Believe | 10 | 11 | 12 | 13 | 14 | 15 |
| | 16 Lunch Bunch Pat's P+3 Group | 17 | 18 | 19 | 20 Men's Group 9 Board 5:30 | 21 | 22 |
| | 23 Cinema | 24 | 25 | 26 | 27 Youth Ministry Team 6:15 | 28 | 29 |
| | | | | | | | |
| | Sunday | Monday | Tuesday | Wednesday | Thursday | Friday | Saturday |
| September 2020 | 30 | 31 | Sept. 1 | 2 | 3 Men's Group 9 Vision Core 6:30 | 4 | 5 |
| | 6 Pot Luck Pat's Groups | 7 Labor Day | 8 | 9 | 10 | 11 | 12 |
| | 13 What We Believe | 14 | 15 | 16 | 17 Men's Group 9 Board 5:30 | 18 | 19 |
| | 20 Lunch Bunch Pat's Group | 21 | 22 | 23 | 24 | 25 | 26 |
| | 27 Cinema | 28 | 29 | 30 | October 1 Men's Group - 9 a.m. Vision Core 6:30 | 2 | 3 |

ADMINISTRATION

All non-essential activities have been deferred until 'afterwards' (whatever that means.)

The monthly Board Agenda, production of the Board Minutes and uploading to website has been handed off. Thank you, Mariann M! Wendie A stuffed the bulletins for the three weeks we met in person. Thanks, Wendie! Maria S. uploads the online calendar & blog, and makes the Sacred Cinema bulletin insert (when we have Cinema). Thank you Maria! Our webmaster, Graeme took down the splash for our Jami Lula event, which was cancelled by the school being closed by the Governor, and a variety of other things.

Kim, our new bookkeeper, continues to delight us with her competence. Bank move almost complete. Residual odds-and-ends remain.

Submitted by: Rev. Janis

ALTARED STATES

This team still needs 1 -2 extra people to set up 1 time a month and provide flowers.

Submitted by Janie Hooper

BOOKSTORE

Submitted by Wendie Arison

CINEMA

Oh hiatus until "afterwards."

Submitted by Janie Hooper

COMPASSIONATE CARE

With in-person contact deferred, the Compassionate Heart team was basically asked to 'stand down' even further from all interpersonal contact, after the middle of March. One congregant donated gift cards which have been disbursed to congregants most likely in need of (minor) monetary support.

Submitted by: Rev. Janis

COMMUNITY BUILDERS OUTREACH

Card is printed (and beautiful), and awaits distribution when Covid 19 restrictions are lifted.

Submitted by: Mariann Moery

E-BAY STORE

On hiatus until a manager is in place.

Submitted by: Mariann Moery

ECCLESIASTICAL CORE

Shelly has been doing the bulk of the online meditations.

We had 8 persons attend the March "What We Believe" session on March 8. The discussions were excellent.

With the closure of the school, and the rapidly evolving situation with the virus, we began online Sunday services on March 22 (through zoom). Attendance continues to grow, and we get better at doing it, and individuals get more comfortable in the stay-home-isolation-mode of doing Sundays.

ril 3, the evening daily practice had been discontinued for lack of interest, but the morning one continues to be well received.

Submitted by: Rev. Janis

EDUCATION CORE

No 'regular' Wednesday classes were scheduled in March. The first Wednesday Drum Circle for March was attended by one congregant. Shelly and Chris decided to discontinue it at this time. One person attended the March 22, Spring Equinox Labyrinth Walk.

Essential Ernest completed on March 17, with 10 completing the course, and one audit.

Foundations of the Science of Mind shifted to online beginning March 30. They will complete on April 20th online.

Keith Gorley's book study on Ralph Waldo Trine's In Touch with the Infinite wound down in March. Attendance has been slight, but the discussion have been valuable.

Team Reports for March, 2020

Education Core continued ...

The Into the Magic Shop books studies began in March. Seven facilitators who self-identified, began, and roughly 20 congregants participated. Most groups either finished quickly or fizzled. It's challenging to know what to do when the world changes.

Pat Masters' Prosperity Plus III class members who chose to engage in mutual support in twice monthly meetings, met twice in March and are now awaiting clear signal to reconvene in person

Rev Janis intends to start an online 12-week Meditation Seminar on April 15, which will serve as a certificated class for those who desire that, and will allow drop-ins for those who don't care to participate at that level.

Submitted by: Rev. Janis

FACILITIES TEAM

Report is included as agenda item.

Submitted by: Mariann Moery

FUNDING TEAM

Team met as part of budget review/reforecast

Submitted by: Mariann Moery

GREETERS

Situation normal, until it wasn't.

Submitted by Janie Hooper

HOST TEAM

Situation normal, until it wasn't.

Submitted by Marya Wheeler

MARKETING AND COMMUNICATIONS TEAM

Update in the Community/Growth Agenda Item.

Submitted by: Mariann Moery

MEMBERSHIP

Nothing to report at this time.

Submitted by: Mariann Moery

MINISTER'S TRAVEL PLANS

No travel in March. None likely in April.

Submitted by: Rev. Janis

MUSIC/SOUND

Our plans for Jami Lula were scuttled by the arrival of the virus, and the Sunday Special Music and afternoon concert were deferred. Jami was concerned that interstate travel might be prohibited. Rev Nita was concerned that attendance would be very poor. Since our first Sunday service online was March 22, this was a very good call.

Our CSLT Orchestra continues to impress with the way they are flowing with the available resources for Sunday performance music, and with the quality of music provided.

Submitted by: Rev. Janis

NEWCOMERS TEAM

Online services have been graced by a couple planning on moving to Tucson later this year.

Submitted by Marya Wheeler

PRACTITIONER CORE

At present, Shelly Dunn is conducting the bulk of the Sunday morning pre-service meditations and providing platform support twice a month, in addition to other behind the scene tasks.

She also, with the strong support of Chris Wheeler hosted the first Wednesday Drum Circle on March 4th to very light attendance. They will let this go for now. She hosted the Spring Equinox Labyrinth Walk on March 20, with very light attendance.

Her plan to facilitate a Wednesday evening short series on Ernest Holmes' This Thing Called You is on hold

YOUTH & FAMILY

Situation normal, until it wasn't.

Submitted by Marya Wheeler

Vision Core Notes - begun Thursday April 2

In attendance: NA

Virtual participants: Christina Reed, Carol Nigut & Rev Janis Farmer

What's the highest vision, highest ideal for Center for Spiritual Living Tucson?

Know peace; all is well and will be well...; Coming out the other side even greater; Space, Power & Light.

What changes, evolves, becomes (releases, moves in or away) as this vision comes into being?

Deepening into trust, reliance, and appreciation of community and heartfelt commitment to it.; Old systems are flushed out and changed where necessary; Coming together as one, community.

Is there anything else that wants to be known, realized or understood?

Now is the time; All is well; chorus to Daniel Nahmod's song, Planting Seeds, "Whatever works will work, whatever flies will fly, what's meant to soar will soar, we are planting seeds, nothing more."

Center for Spiritual Living Tucson

Board Agenda & Reports

April 16, 2020

7 Finance/Stewardship Report

Rev Janis, Interim

Executive Summary:

March 2020 was a 5-Sunday month, at the beginnings of a social isolation period. Schools closed, which means our Sunday services became virtual as of March 22, and Jami Lula's visit and concert was postponed. Our world changed radically.

Dick Laird reluctantly resigned from the Board and the Treasurer's position because of family/health issues. His wisdom, counsel, presence, steadfastness, and servant's heart will be greatly missed in leadership. We love you Dick.

The Board has agreed to sustain and hold the vision of increased attendance by individuals willing and able to participate (in all ways and on many levels), this allows us opportunities to expand our reach in Tucson.

| | <u>Total Sunday Offerings & P+</u> | <u>Designated Monies</u> | <u>Total Income*</u> | <u>Total Expenses*</u> | <u>Net Income*</u> | <u>\$/Weekly Attendee</u> | <u>Avg Weekly Attendance</u> |
|--------------|--|--------------------------|----------------------|------------------------|--------------------|---------------------------|------------------------------|
| March | 10,692 | 0 | 11,806 | 9,408 | 2,398 | 53.46 | 40 |
| February | \$12,358 | 40 | 13,344 | 9,288 | 4,056 | 44.45 | 70 |
| January | \$10,199 | 0 | 14,002 | 10,012 | 3,990 | 38.34 | 67 |
| December | \$16,791 | 12,000 | 17,741 | 10,803 | 6,938 | 61.96 | 54 |

* Presently we have a stand-alone Facility Fund, Scholarship Fund, a Practitioner Fund, an Opportunity Fund and a Compassionate Heart fund. All are designated and are not considered as part of Total Income or Total Expenses.

| <u>Cash Balances</u> | <u>March</u> | <u>February</u> | <u>January</u> | <u>December</u> |
|-------------------------------------|-----------------|-----------------|-----------------|-----------------|
| Chase General Ops Checking | \$9,619 | \$19,580 | \$20,375 | \$27,525 |
| Vantage W. Gen Ops Checking | \$28,010 | \$16,479 | \$11,712 | \$3,628 |
| Chase Education (Savings) Fund | \$0 | \$0 | \$4,421 | \$4,776 |
| Vantage W. Education Savings | \$10,631 | \$10,057 | \$4,796 | \$3,003 |
| Chase (Operating) Savings | \$0 | \$0 | \$0 | \$0 |
| VWCU Practitioners' Savings | \$412 | \$412 | \$412 | \$412 |
| Designated Holdings (Music) | \$0 | \$0 | \$0 | \$0 |
| SubTotal | \$48,672 | \$46,528 | \$41,716 | \$39,344 |
| Chase Opportunity Fund [⌘] | \$0 | \$0 | \$16,401 | \$16,401 |
| Chase Facility Fund Savings | \$1,061 | \$1,061 | \$361 | \$361 |
| Vantage W. Facility Fund Savings | \$4,718 | \$4,716 | \$5,416 | \$5,414 |
| VWCU Imprmnt/Opportun Fund | \$16,428 | \$16,411 | \$8 | \$5 |
| Facility Fund Invest. Acct | \$0 | \$0 | \$0 | \$0 |
| Total | \$70,879 | \$68,716 | \$63,902 | \$61,525 |

[⌘] We received an anonymous designated gift, part of which is to be used for 'sustainable' marketing activities. We called this the Opportunity Fund. Out of this account we have funded the website upgrade & partially funded of our Office improvement fund.

Comparison between March 2019 and March 2020 (both 5-Sunday months):

| | | | |
|------------------------|--------------|---------|---------------------------------------|
| Attendance/Sunday | DEcreased by | 17 | health concerns & moved to online |
| Offerings/Month | INcreased by | \$52 | |
| Offering/person/Sunday | INcreased by | \$16.00 | |
| Total Income | DEcreased by | \$345 | |
| Expenses | DEcreased by | \$2,082 | In 2019 we were still renting the old |
| Net Income | INcreased by | \$1,737 | office on E River Rd @ \$1600/mo |

Status of the CSLT Facility Fund

Facility Fund Investment Acct Deposits: Initial Deposit \$50,000 (Nov12), Deposit \$10,236 (Mar13) Deposit \$15,188 (Dec13)
Investment Account closed December 2016 to purchase raw land at 4961 E. 22nd St. On June 3, 2019 we sold our raw land on 22nd St, and have agreed to serve as 'bank' for the buyer for five years with annual payments, on June 3 of each year.

| Date | CSLT | Various Projects & | Personal | \$ Total |
|------|------|--------------------|----------|----------|
|------|------|--------------------|----------|----------|

Center for Spiritual Living Tucson

Board Agenda & Reports

April 16, 2020

| | Contributions | Interest | Donations | |
|---|---------------|----------|-----------|---------|
| Year End 2009 | | | | 29,365 |
| Year End 2010 | | | | 48,710 |
| Year End 2011 | | | | 70,361 |
| Year End 2012 | 6,800 | 1,045 | 1,430 | 79,636 |
| Matching Fund Reserves | | | 2,900 | 82,536 |
| Year End 2013 (Inspection) | <1,800> | 4,780 | 3,327 | 88,843 |
| Year End 2014 | <600> | 1,789 | 25,884 | 115,936 |
| Year End 2015 (Moved to River Rd) | <5,223> | <1,786> | 7,109 | 116,027 |
| Year End 2016 (Purchased land) | <102,024> | 2,068 | 2,440 | 18,511 |
| Year End 2017 (InvAcctClosed.) | | 164 | 1,500 | 20,175 |
| Year End 2018 | | 112 | 1,000 | 21,287 |
| Year End 2019 (sold land & bought office) | | <17,146> | 200 | 4,341 |
| January 2020 | | | | 4,341 |
| February 2020 | | | | 4,341 |
| March 2020 | | | | 4,341 |

Facility Fund expenses to relocate to our Education Center have been completed (for now). In total we spent \$59,330.32 for the downpayment and the repairs required to meet the requirements of our mortgage holder. A detailed breakdown of expenditures was presented in the January 16th Board minutes.

Budget and Actuals for First Quarter 2020 presented separately

Range Report for 1st Quarter 2020 (with previous quarters for comparison)

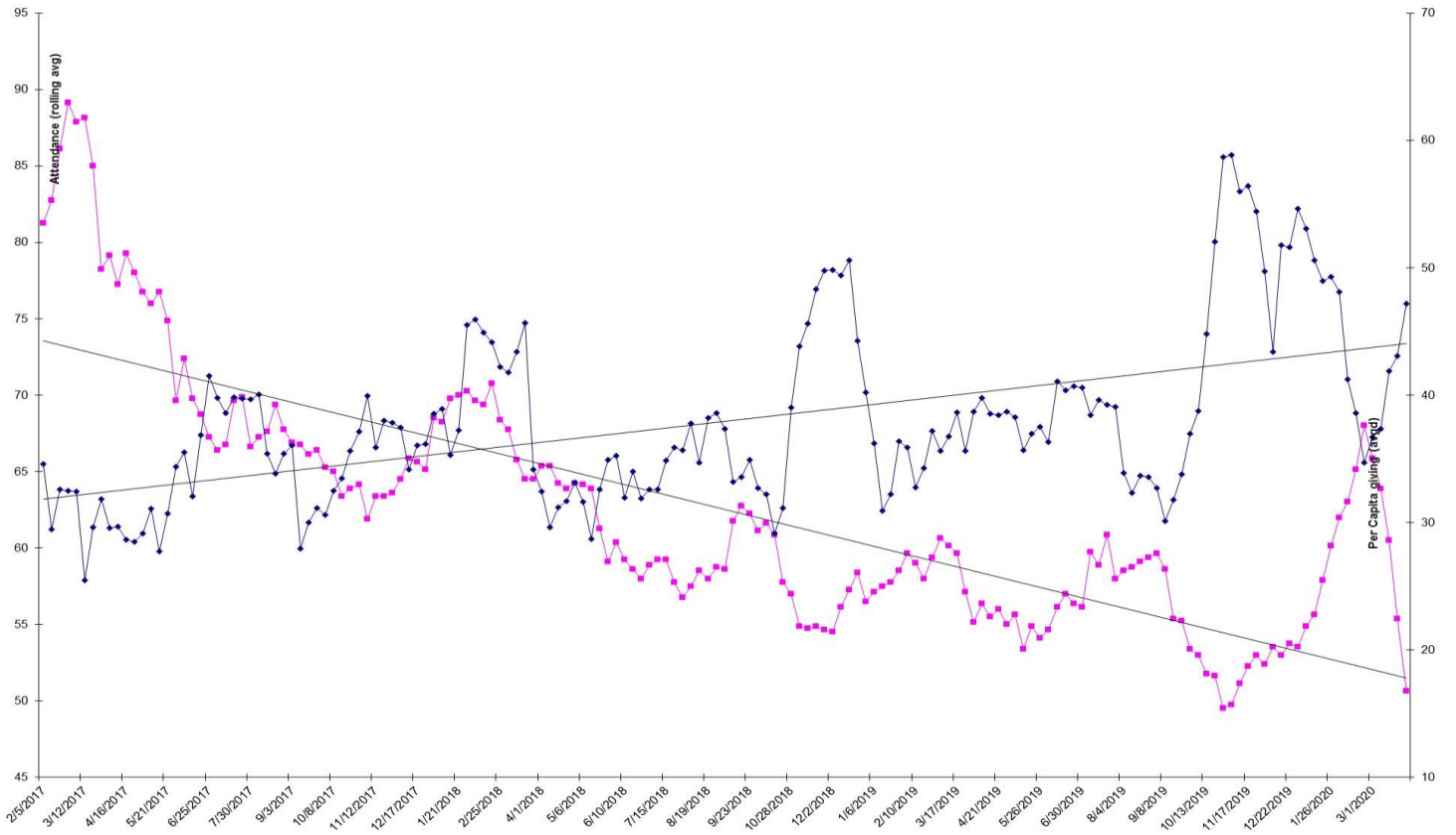
| Donations/ qtr | 1Q2020 | | 4Q2019 | | 3Q2019 | | 2Q2019 | | 1Qtr 2019 | |
|-------------------------|------------|---------------|------------|---------------|------------|---------------|------------|---------------|------------|---------------|
| | All | Extnd Ldrs | All | Extnd Ldrs | All | Extnd Ldrs | All | Extnd Ldrs | All | Extnd Ldrs |
| >\$2,000 | 3 | 0 | 4 | 1 | 0 | 0 | 1 | 1 | 1 | 0 |
| \$1,500- 1,999 | 3 | 2 | 3 | 1 | 4 | 2 | 4 | 1 | 3 | 1 |
| \$1,000- 1,499 | 1 | 1 | 4 | 2 | 4 | 4 | 3 | 3 | 2 | 2 |
| \$750-999 | 4 | 2 | 5 | 2 | 3 | 2 | 2 | 1 | 3 | 2 |
| \$500-749 | 8 | 4 | 12 | 5 | 7 | 3 | 11 | 6 | 8 | 5 |
| \$250-499 | 13 | 5 | 11 | 4 | 12 | 2 | 11 | 4 | 11 | 6 |
| \$100-249 | 14 | 2 | 16 | 2 | 13 | 5 | 22 | 2 | 25 | 1 |
| \$1-99 | 20 | 1 | 12 | 1 | 24 | 1 | 15 | 0 | 22 | 1 |
| 0 or UnID'd | ? | 3 | ? | 2 | ? | 2 | ? | 2 | ? | 1 |
| Total Number | 66+ | 20 | 67+ | 20 | 67+ | 21 | 68+ | 20 | 75+ | 19 |

For the 1st quarter 2020, the 'bright line' (20% of the contributors donated 80% of the income) was \$450 and included 10 leaders out of 21 contributors. For the 4th quarter of 2019, the bright line was \$600 and included 9 of the extended leadership out of 22 contributors. For the 3rd quarter of 2019, the bright line was \$400 and included 13 of the extended leadership out of 24 contributors. For the 2nd quarter of 2019, the bright line was \$400 and included 13 leaders out of 25 congregants. For the 1st quarter of 2019, the bright line was \$300 and included 15 leaders out of 25 total congregants.

We started holding virtual services on March 22nd, when the schools were closed by the governor.

Center for Spiritual Living Tucson
 Board Agenda & Reports
 April 16, 2020

p



pink (lower) line attendance
 blue (upper) line contributions per person per Sunday
 both are rolling averages (over 8 weeks) to reduce the amount of 'noise' in the numbers.