



Board of Trustees

Minutes

March 19, 2020

		Presenter	Duration
1	Call to Order and Evocation	Mariann	5 Min
2	Visioning	Rev. Janis	15 min
3	Checking In	All	5 min
4	Last Month's Minutes	Mariann	Done/0 Min
5	Call to Audience	Mariann	1 Min
6	Finance/Stewardship Report Pages 11-13		
	Discussion of current fiscal status	Rev. J	5 min
7	Review Current Business Items Page 2		
7 a	911 Craycroft update	Rev.J	2 min
7 b	Moving accounts from Chase to Vantage	Rev. J	1 min
8a-i	Major Goal Check-In/Dashboard Page 2	All	15 Min
9	The 2019-20 Planning Cycle Page 3		
9a	Donor gratitude event	All	5 min
9b	Planning/Social April to de decided	All	2 min
9c	Board meeting April 16, 2020 at 5:30	All	0 min
9d	CSLT - planning its 50th anniversary in September	All	15 min
10	New Business for This Meeting Page 3		
	The Center's response to Covid 19		
11	Tabled Items Page 3		
	Next Steps for Consolidated Campus	Dick	0 min
	Board Covenants & Consensus	All	0 min
	Small Group Requirements	All	0 min
12	Additional New Business for this meeting Page 3	Mariann	2 min
13	New Business for Next/Future Meeting Page 3	All	2 Min
14	Sunday's Gratitudes Page 4	All	5 Min
15	Review CIAB Schedule Page 4	All	5 Min
16	Lead Newsletter Articles Page 4	All	2 Min
17	Six Month Look Ahead on Calendar Page 5-7	All	5 Min
18	Team Reports Page 8-10	All	5 Min
	Adjourn and Pray out	Rev. Janis	
	Present: Mariann Moery, Marya Wheeler, Janie Hooper, Rev. Janis		
	Absent: Dick Laird		
	In Service: Scribe - Mariann; High Watch-Rev. Janis		
	Guests: None		



		Center for Spiritual Living Tucson					
			Board Minutes				
			March 19, 2020				
1	Call to Order/Evocation						5:30 p.m.
2	Visioning	Not done.					
Q: What is the Highest Vision or Highest Ideal for Center for Spiritual Living Tucson?							
Looks like sunshine, feels busy, knows Truth; Outreach in unexpected ways, silliness, acceptance, joy; Daisies, Children, Little girls in dresses, white picket fence, sense of Joy, Pleasure, Peace, Love! Orange & raspberry fizzy tablets, a bright & shiny, waxed & polished small white church building;							
Q: What changes, evolves, or becomes as this highest vision comes into existence?							
Clouds move out, rains cease, plan in place; calm acceptance of good, joy, joy & more joy; More fun, caramel corn, movies; growing enthusiasm & appetite for making it happen, solidly for building what needs to happen,.							
Q: Is there anything else that wants to e known, understood, or realized? What else?							
Co-operation, room for all; Man in the maze symbol; sense of wonder; loving couple sitting on wooden fence watching the sun set & being content.							
3	Checking In						All
4	Last Month's Minutes						Mariann
5	Call to Audience						Mariann
6	Finance/Stewardship Report						Dick/Rev. J
	Current financial reporting	Pages 11-13					
	Administrative support	As time permits, Rev. Janis to begin the search for part-time support.					
	Opportunity Fund contribution	Mariann and Janis are working on process to create and upload videos					
7	Financial Reporting						
Report, Decision & Action							
7a	911 S Craycroft facilities update	Our sign has been physically inspected and a report is expected on the two processes to protect from any potential graffiti.					
7b	Moving to Vantage West CU	We have closed the Chase accounts. The Board deferred setting up a money market account until we see the status of income.					
8	Review of Current Activities						
8a	Education	Team Report attached.					
8b	Youth Program	Team members to create a shared folder on Google Drive. The team is scheduled to meet monthly. One Foundations Class member is a potential team member.					
8c	Board Status	Potential new members - nothing new to report.					
8d	Community & Growth 2020 Credo CSLT inspire spiritual expression in community with all and offers an accepting, loving, and peaceful way of living a joyful, healthier and more abundant life.	CSLT as community. Community growth discussion to continue. The card is printed and ready to be distributed throughout and by the entire community once Covid 19 restrictions are removed: Bulletin insert (Pot Luck Sunday(s), Small groups; foyer tables; commercial, academic, military locations to be identified.					

CSLT - Board Minutes March 19,2020


8d	Community & Growth continued	<p>The Board approved an ad placement in the free newspaper distributed to homes and businesses, as well as a simple design/layout to be used. The paper has agreed to a special heading for us in the Directory. Physical sites on campus are another possibility later. Our Community what is it? Why is it important? What is our responsibility as a Board to nurture it? This conversation will be ongoing throughout 2019-2020. A rule of thumb to create growth a Center needs 1 1/2 times attendees on an annual basis.</p>							
8e	Newsletter Statistics	623-629 e-newsletters sent. 186-229 opened (30-37%). 33-39% click-throughs.							
8f	Survey 2020	The 2020 Survey has been reviewed and Mariann will update on Constant Contact for distribution.							
8g	Small Groups	<p>The men's group meets 1st & 3rd Thursdays for breakfast, with 6-8 in attendance. A Music Study group may form. Hiking may come later. Pat Masters Prosperity + group continues to meet 1st & 3rd Sundays with 5-8 attending. 7 home study groups of INTO THE MAGIC SHOP started in March with 3-5 persons attending each group. Sign-ups are closed. These groups may extend to make up for missed meetings, or continue at the Group's choice.</p>							
8h	Jami Lula	Performance is cancelled due to Covid 19, and pre-purchased tickets have been refunded. He will come later.							
8i	Board Liaisons	Team assignments and report due dates on Page 4							
9	2019-2020 Planning Cycle								
9a	Gratitude Dinner	The annual donor appreciation event scheduled for 3/29 was postponed. Announcement letters were signed & mailed to all. It will be re-scheduled later when larger gathers are allowed.							
9b	April Planning/Social	There will be no April planning/social .							
9c	Board	April Board meeting will be on Thursday April 16, 2020 at 5:30							
9d	CSLT 50th Anniversary	The anniversary date is September 14th. Celebration planning is beginning now. It was agreed the celebration should be seen as a "homecoming" and include recognition of the creativity of our community, and the contributions that makes to our expression of who we are at 50.							
10	New Business for this meeting								
	Covid 19	The Center's response: Service and Foundation classes have been moved online. Other activities may be as well. Some events are being postponed or cancelled as health reasons require.							
11	Tabled Items								
	Next steps for Consolidated Community Campus:	Further discussion of this item is tabled until Center and community growth clarifies our needs.							
	Board Covenants	The Board's Covenants and decision making procedures tabled for now.							
	Small group Requirements	Further discussion of this topic tabled for now.							
12	Additional New Business for this meeting.								
13	New Business Items for Next Meeting								

CSLT - Board Minutes- March 19, 2020

14	Sunday Gratuities						
	Date	Honoree					
	3/22	Spring - growth - change etc.					
	3/29	? Youth Ministry - if timing works - to be reviewed at 3/19 Board meeting					
	4/5	anniversaries, etc.					
	4/12	"Easter"/ Christ consciousness					
	4/19	All participants in Home Study Groups					
	4/26	Foundation class graduates					
15	CIAB Schedule Gregory School contact: Mary Babbitt 520 243-3222						
		To be confirmed when we return to The Gregory.					
	3/22	Janie/Mariann					
	3/29	Marya/Janie					
	4/5	Dick/Dick					
	4/12	Janie/Mariann					
	4/19	Marya/Marya					
	4/26	Janie/Mariann					
	Newsletter Articles						
	Due	Who is writing					
	3/22	Marya					
	3/29	Dick					
	4/5	Mariann					
	4/12	Janie					
	4/19	Rev. Janis					
	4/26	Marya					
	Rotation:	Rev J--> -> Marya -->Dick--> Mariann-->Janie					
17	Six Month Calendar Review			Starts page 5			
18	Team Reports:			Start page 8			
	Board Liaisons & Team Reports		2019-2020 Board Liaison responsibilities: Revised 11/22/19 Rev. J. Sunday: Practitioner Core, Education, Admin, Ops Mariann: Chair, Trustees, Marcom, Outreach, Video, Photography, Membership, Bookstore Marya: Vice-Chair, Youth Program, Newcomers, Hosts Dick: Treasurer, Funding/Stewardship, Hospitality, Facilities Janie: Greeters, Gratitude Banquet, Altared States, Cinema				
	Due	10 days before Board meeting					
	4/6	please email to					
	5/11	mmoery@gmail.com					
	6/8	Thank you!					
	Adjourn and Pray Out						

Center for Spiritual Living Tucson							
	Sunday	Monday	Tuesday	Wednesday	Thursday	Friday	Saturday
March 2020	1 Potluck Sunday Pat's P+3 Group	2 Foundations 6-9 Home Study: <i>Into The Magic Shop</i> various times	3 Essential Ernest 1-4 & 6-9	4 Keith Gorley R W Trine <i>In Tune with the Infinite</i> 4-5:30 Drum Circle 6:30-8:30	5 Men's Group 9 Vision Core 6:30	6	7
	8 What We Believe 1:30 at 911	9 Foundations 6-9 Home Study: <i>Into the Magic Shop</i> various times	10 Essential Ernest 1-4 & 6-9	11 Keith Gorley R W Trine <i>In Tune with the Infinite</i> 4-5:30	12	13	14 Foundations classes all day at the Office
	15 Lunch Bunch Pat's P+3 Group	16 Foundations 6-9 Home Study: <i>Into The Magic Shop</i> various times	17 Essential Ernest ends 	18 Keith Gorley R W Trine <i>In Tune with the Infinite</i> 4-5:30	19 Men's Group 9 Board 5:30	20 Spring Equinox Labyrinth Walk 6:30-8:30	21 
	22 Jami Lula at Service & at Unity No Cinema -> next week	22	24 Daily morning practice begins online 8:30 a.m.	25 K Gorley R W Trine <i>In Tune with the Infinite</i> 4-5:30	26 Youth Ministry Team 6:15 Evening meditation online begins 7:15 p.m.	27	28
	Sunday	29	Tuesday	Wednesday	Thursday	Friday	Saturday
April 2020	29 5th Sunday Cinema postponed	30 Foundations 6-9	31	4/1 Keith Gorley R W Trine <i>In Tune with the Infinite</i> 4-5:30	2 Men's Group 9 Vision Core 6:30 virtual only	3	4
	5 Service online	6 Foundations 6-9	7	8 R W Trine last class 4-5:30	9	10	11
	12 Service online	13 Foundations 6-9 last class	14 Meditation Seminar online ?	15	16 Men's Group 9 Board 5:30	17	18
	19 Lunch Bunch Pat's P+3 Group	20	21 Meditation Seminar online ?	22	23 Youth Ministry Team 6:15	24	25
	26 Cinema	27 Visioning or Power begins ?	28 Meditation Seminar online ?	29	30	May 1	2

Center for Spiritual Living Tucson

Center for Spiritual Living Tucson							
		Monday	Tuesday	Wednesday	Thursday	Friday	Saturday
May 2020	3 Potluck Sunday Pat's P+3 Group	4 Visioning or Power?	5 Meditation Seminar online ?	6 ? Metaphysical Jesus 6:30-8:30	7 Men's Group 9 Vision Core	8	9
	10 What We Believe 1:30	11 Visioning or Power?	12 Meditation Seminar online ?	13 ? metaphysical Jesus 6:30-8:30	14	15	16
	17 Lunch Bunch Pat's P+3 Group	18 Visioning or Power?	19 Meditation seminar online ?	20 ? Metaphysical Jesus 6:30-8:30	21 Men's Group 9 Board 5:30	22	23
	24 Cinema	25 Memorial Day No class	26 Meditation seminar online ?	27 ? Metaphysical Jesus 6:30-8:30	28	29	30
	31 5th Sunday	June 1 Visioning or Power?	2 Meditation seminar online ?	3	4 Men's group	5	6
	Sunday	Monday	Tuesday	Wednesday	Thursday	Friday	Saturday
June 2020	7 Potluck Sunday Pat's P+3 Group	8 Visioning or Power?	9 Meditation seminar online ?	10	11	12	13
	14 What We Believe 1:30	15 Visioning or Power?	16 Meditation seminar online ?	17	18 Men's Group 9 Board 5:30	19	20
	21 Lunch Bunch Pat's +3 Group	22 Visioning or Power?	23 Meditation seminar online ?	24	25 Youth Ministry Team 6:15	26	27
	28 Cinema	29 Visioning or Power?	30 Meditation seminar online ends	1-Jul	2 Men's Group 9 a m	3	4 

Center for Spiritual Living Tucson

	Sunday	Monday	Tuesday	Wednesday	Thursday	Friday	Saturday
July 2020	5 Potluck Sunday Pat's P+3 Group	6 Visioning or Power?	7	8	9	10	11
	12 What We Believe 1:30	13 Visioning or Power?	14	15	16 Men's Group 9 Board 5:30	17	18
	19 Lunch Bunch Pat's +3 Group	20 Visioning or Power?	21	22	23 Youth Ministry Team 6:15	24	25
	26	27 Visioning or Power?	28	29	30	31	August 1st
	Sunday	Monday	Tuesday	Wednesday	Thursday	Friday	Saturday
August 2020	2 - Potluck Pat Masters' P+3	3	4	5	6 Men's Group 9 Vision Core 6:30	7	8
	9 What We Believe	10	11	12	13	14	15
	16 Lunch Bunch Pat's P+3 Group	17	18	19	20 Men's Group 9 Board 5:30	21	22
	23 Cinema	24	25	26	27 Youth Ministry Team 6:15	28	29

CSLT - Board Agenda - January 16, 2020
Team Reports for February 2020

ADMINISTRATION

Sign remains beautiful, lit or unlit. Contacting potential vendor who advertises they can graffiti-proof, or at least make our sign graffiti-resistant. Hardware has been obtained to get security cameras working. IBE has been contacted to come show us how to use it. So far, we haven't connected.

The monthly Board Agenda, production of the Board Minutes and uploading to the newsletter and website has been handed off. Thank you, Mariann M! Wendie A continues to stuff the bulletins. Thanks, Wendie! Maria S. uploads the online calendar & blog, and makes the Sacred Cinema bulletin insert. Thank you Maria! Our webmaster, Graeme, with substantial prodding from Mariann, has created a splash for our Jami Lula event, and option to purchase tickets.

Kim, our new bookkeeper, continues to delight us with her competence. Education, and Opportunity Fund accounts have been moved to Vantage West during February. A number of vendors and suppliers who were on automatic payment have been rerouted to the new accounts.

Submitted by: Rev. Janis

ALTARED STATES

This team still needs 1-2 extra people to set up 1 time a month and provide flowers.

Submitted by: Janie Hooper

BOOKSTORE

Ernest Holmes \$135.60 + Other Books & Magazines \$373.50 + Service CDs \$50.00 = \$559.10

Submitted by: Wendie Arison

CINEMA

The Peanut Butter Falcon was the movie of the month.

Submitted by: Janie Hooper

COMPASSIONATE CARE

Though the Compassionate Heart team was disbanded for lack-of-need, two congregants who needed additional support received it from a number of other congregants who were ready, willing and able to assist in providing rides, as well as other sorts of physical, social and emotional support.

Submitted by: Rev. Janis

COMMUNITY BUILDERS OUTREACH

Flier Card copy was completed and is ready to go to the printer.

Submitted by: Mariann Moery

E-BAY STORE

On hiatus until a manager is in place.

Submitted by: Mariann Moery

ECCLESIASTICAL CORE

Our Sunday morning meditation leaders are continuing to shift and some new volunteers have taken charge when one of our scheduled meditation leaders did not appear.

As part of the 2020 Community Envisioning process, a request was made to have a regular open discussion about "What We Believe" with interested congregants. The intention is to give individuals a way to discover that talking points they would feel comfortable speaking about in sharing their experience of this philosophy. Nine persons attended the discussion group on the 2nd Sunday of February. We will continue meeting monthly as long as there is interest.

Submitted by: Rev. Janis

Team Reports for February 2020

EDUCATION CORE

No 'regular' Wednesday classes were scheduled in February. The first Wednesday Drum Circle for February was attended by one out-of-town guest who found us in the Natural Awakenings magazine. Shelly and Chris has agreed to host a first Wednesday Drum Circle in March and will determine whether to continue or not after that.

Keith Gorley's book study started on February 5th on Ralph Waldo Trine's In Touch with the Infinite. Attendance has been slight, but the discussion have been valuable.

Our next community book study, James Doty's Into the Magic Shop begins in March. We presently have 6 facilitators who self-identified, and roughly 20 congregants participating in a home study group.

Pat Masters has reconvened those members of the Prosperity Plus III class who choose to engage in mutual support in twice monthly meetings. These were held the 1st and 3rd Sundays during February, from 1:30-3:30pm. Approximately 1/3 to 1/2 of the P+III participants continue to meet regularly.

Submitted by: Rev. Janis

FACILITIES TEAM

Report is included as agenda item.

Submitted by: Dick Laird

FUNDING TEAM

Team met as part of budget review/reforecast

Submitted by: Dick Laird

GREETERS

Fully staffed in February.

Submitted by Janie Hooper

HOST TEAM

Host Team is fully staffed and operating well. We began using a new script that refers to the Youth program. No other new info.

Submitted by Marya Wheeler

MARKETING AND COMMUNICATIONS TEAM

Planning meeting and email readership in the Community/Growth Agenda Item.

Submitted by: Mariann Moery

MEMBERSHIP

Foundations classes continue with the all day "retreat" scheduled for March 14th at the Education Center.

Submitted by: Mariann Moery

MINISTER'S TRAVEL PLANS

Rev Janis attended the cold, and inspirational/informative, CSL convention in Denver. No Sunday Celebration Services will be affected, though there were no certificated classes the week she was out of town.

Submitted by: Rev. Janis

MUSIC/SOUND

We remain grateful for our stage band and our volunteer singers, and for the high quality music we enjoy every Sunday whether we have 'special' music or not.

On February 2nd, we welcomed back Rafe Pearlman who provided special music. Leona Freeman gifted us with her beautiful vocalizations one Sunday.

We are delighted to look forward to special music almost every Sunday in March either from our own volunteer singers, or from our Spring Music Event provider, Jami Lula!

Submitted by: Rev. Janis

NEWCOMERS TEAM

7 visitors: 5 emails, 5 tel #, 1 referral, 1 traveler, 1 friend, 1 internet

Submitted by Marya Wheeler

PRACTITIONER CORE

At present, Shelly Dunn is conducting three of the Sunday morning pre-service meditations and providing platform support twice a month, in addition to staffing the Ministry or Prayer box on Sundays when she is present, as well as other behind the scene tasks.

She also, with the strong support of Chris Wheeler hosted the first Wednesday Drum Circle on February 5th to very light attendance. She will be hosting the Spring Equinox Labyrinth Walk on March 20, and is contemplating facilitating a Wednesday evening short series on Ernest Holmes' This Thing Called You in April.

Submitted by: Rev. Janis

YOUTH & FAMILY

The Youth Program teachers meet on the 4th Thursday of the month at 6:15.

We plan to implement a Google drive spreadsheet that will be shared amongst the members.

We are still following the January curriculum because we have only had 3 classes. We have classes set up through February with activities and supplies.

Reverend Janis said that one member of the current Foundations class is taking it with the reduced fee available to those that will commit to serving as a Youth program teacher.

Reverend Janis also confirmed that the Youth program teachers are free to take two of the three copies of the service that Phillip creates on CD every Sunday when a class is held and the teachers miss the service.

Submitted by Marya Wheeler

Vision Core Notes - begun 5 March 2020, 6:30pm

In attendance: Barbara McGill, Chris Wheeler, Marya Wheeler & Rev Janis Farmer

Virtual participants: Christina Reed, Carol Nigut

What's the highest vision, highest ideal for Center for Spiritual Living Tucson?

Warm light, connected minds, waves of connection, identity as one communicating; Fireworks (in a fountain shape) exploding into a bouquet of flowers; Catbird seat, wheel/spiral with steps, a chalice enveloping (us), revolving, evolving, circular movement in the self; Sound of a bell in a Zen meditation garden, peace-ability, one breath; Behold I bring you good tidings of great joy; Vision of joyous community members dancing and singing in celebration.

What changes, evolves, becomes (releases, moves in or away) as this vision comes into being?

Influx, new energy, phase shift to red; Youth group sleep-overs on cots; Always, circle of life and death and infinity lifting up, a vortex, changing, transforming, transmuting, new experience, new meaning, realization --> action, oooooh and a smile; Resistance departs, bright global oneness, sunrise, open arms; Photons enter our space and bring the light we chose particle or wave, how does our matter unfold?; A decision is made to thrive rather than merely survive.

Is there anything else that wants to be known, realized or understood?

Uptick in involvement, exciting commotion; Love rushing towards us, enveloping us; Outside-in, inside-out, letting it go, embracing letting go, all in, but not attached, spring sprung, sphere of movement, courage, justice, well-being for all; Spaciousness, deep joy, laughter; Grace and peace and prosperity; It's up to us. God is waiting;

Center for Spiritual Living Tucson

Board Minutes & Reports

March 19, 2020

7 Finance/Stewardship Report

Dick Laird

Executive Summary:

February 2020 was a 4-Sunday month, with special music two out of four Sundays. Average Sunday attendance: 70.

The Board has agreed to sustain and hold the vision of increased attendance by individuals willing and able to participate (in all ways and on many levels), this allows us opportunities to expand our reach in Tucson.

	<u>Total Sunday Offerings & P+</u>	<u>New Designated Monies</u>	<u>Total Income*</u>	<u>Total Expenses*</u>	<u>Net Income*</u>	<u>\$/Weekly Attendee</u>	<u>Avg Weekly Attendance</u>
February	\$12,358	40	13,344	9,288	4,056	44.45	70
January	\$10,199	0	14,002	10,012	3,990	38.34	67
December	\$16,791	12,000	17,741	10,803	6,938	61.96	54
November	\$9,838	<683>	10,589	9,444	1,145	47.76	52

* Presently we have a stand-alone Facility Fund, Scholarship Fund, a Practitioner Fund, an Opportunity Fund and a Compassionate Heart fund. All are designated and are not considered as part of Total Income or Total Expenses.

<u>Cash Balances</u>	<u>February</u>	<u>January</u>	<u>December</u>	<u>November</u>
Chase General Ops Checking	\$19,580	\$20,375	\$27,525	\$19,314
Vantage W. Gen Ops Checking	\$16,479	\$11,712	\$3,628	\$4,628
Chase Education (Savings) Fund	\$0	\$4,421	\$4,776	\$4,476
Vantage W. Education Savings	\$10,057	\$4,796	\$3,003	\$3,003
Chase (Operating) Savings	\$0	\$0	\$0	\$0
VWCU Practitioners' Savings	\$412	\$412	\$412	\$412
Designated Holdings (Music)	\$0	\$0	\$0	\$0
SubTotal	\$46,528	\$41,716	\$39,344	\$31,833
Chase Opportunity Fund [☞]	\$0	\$16,401	\$16,401	\$4,401
Chase Facility Fund Savings	\$1,061	\$361	\$361	\$1,000
Vantage W. Facility Fund Savings	\$4,716	\$5,416	\$5,414	\$5,413
VWCU Improvement Fund	\$16,411	\$8	\$5	\$5
Facility Fund Invest. Acct	\$0	\$0	\$0	\$0
Total	\$68,716	\$63,902	\$61,525	\$42,652

☞ We received an anonymous designated gift, part of which is to be used for 'sustainable' marketing activities. We called this the Opportunity Fund. Out of this account we have funded the website upgrade & partially funded of our Office improvement fund.

Comparison between January 2019 and January 2020:

Attendance/Sunday	INcreased by	12	yay!!
Offerings/Month	INcreased by	\$3,046	
Offering/person/Sunday	INcreased by	\$3.96	
Total Income	INcreased by	\$3,219	
Expenses	DEcreased by	\$517	In 2019 we were still renting the old office on E River Rd @ \$1600/mo
Net Income	INcreased by	\$3,736	

Status of the CSLT Facility Fund

Facility Fund Investment Acct Deposits: Initial Deposit \$50,000 (Nov12), Deposit \$10,236 (Mar13) Deposit \$15,188 (Dec13)
Investment Account closed December 2016 to purchase raw land at 4961 E. 22nd St. On June 3, 2019 we sold our raw land on 22nd St, and have agreed to serve as 'bank' for the buyer for five years with annual payments, on June 3 of each year.

<u>Date</u>	<u>CSLT Contributions</u>	<u>Various Projects & Interest</u>	<u>Personal Donations</u>	<u>\$ Total</u>
Year End 2009				29,365
Year End 2010				48,710

Center for Spiritual Living Tucson

Board Minutes & Reports

March 19, 2020

Year End 2011				70,361
Year End 2012	6,800	1,045	1,430	79,636
Matching Fund Reserves			2,900	82,536
Year End 2013 (Inspection)	<1,800>	4,780	3,327	88,843
Year End 2014	<600>	1,789	25,884	115,936
Year End 2015 (Moved to River Rd)	<5,223>	<1,786>	7,109	116,027
Year End 2016 (Purchased land)	<102,024>	2,068	2,440	18,511
Year End 2017 (InvAcctClosed.)		164	1,500	20,175
Year End 2018		112	1,000	21,287
Year End 2019 (sold land & bought office)		<17,146>	200	4,341
January 2020				4,341
February 2020				4,341

Facility Fund expenses to relocate to our Education Center have been completed (for now). In total we spent \$59,330.32 for the down payment and the repairs required to meet the requirements of our mortgage holder. A detailed breakdown of expenditures was presented in the January 16th Board minutes.

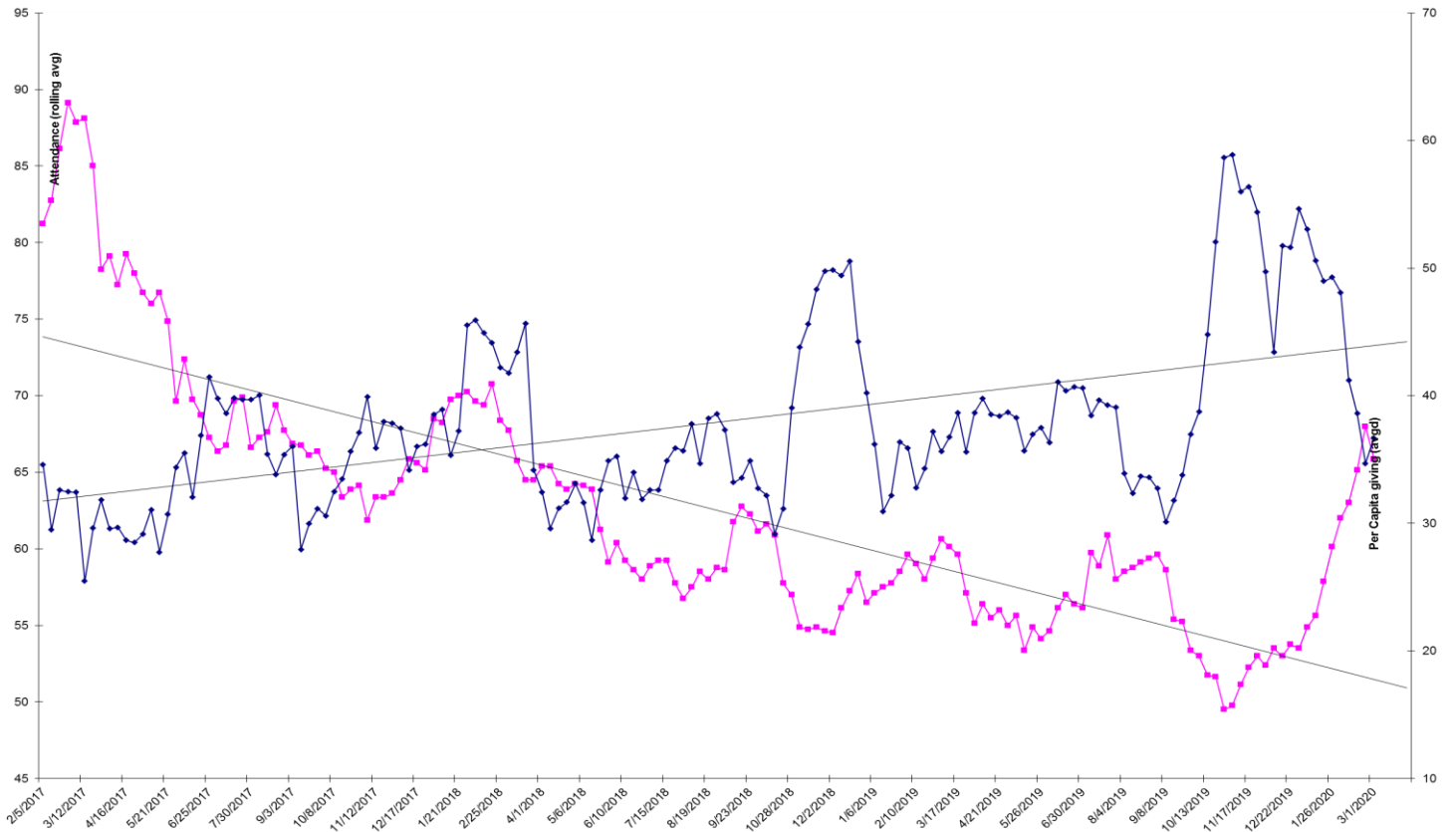
Budget for January & February 2020 with Actual Expenditures

	Jan 2020		Feb 2020		Total	
	Actual	Budget	Actual	Budget	Actual	Budget
Income						
40100 Contributions						
40101 Sunday Offerings	7,169	8,000	9,712	8,000	16,881	16,000
40110 Online Contri	2,599	2,000	2,646	2,000	5,245	4,000
40120 Other Donations	431				431	0
Total 40100 Contributions	10,199	10,000	12,358	10,000	22,557	20,000
43101 Facility Rental Income	31	40	43	40	74	80
45010 Interest / Dividend Income	2		3		6	0
45020 Rewards & Rebates	3		119		122	0
Total Income	10,235	10,040	12,523	10,040	22,759	20,080
Expenses						
Total 00 ADMINISTRATION	3,992	4,951	3,944	4,751	7,936	9,702
Total 02 MINISTER COMPENSATION	1,725	1,725	1,725	1,725	3,450	3,450
Total 03 MUSIC EXPENSE	1,810	1,852	1,910	1,952	3,720	3,804
Total 04 MINISTRY EXPENSE	0	40	42	1,090	42	1,130
Total 05 SUNDAY SERVICE EXP	350	310	200	460	550	770
Total 06 TITHING / CHARITABLE GIVING	1,020	1,000	1,236	1,000	2,256	2,000
Total 07 LEADERSHIP DEVELOPMENT EXP	0	1,500	0	0	0	1,500
Total Expenses	8,897	11,378	9,057	10,978	17,954	22,356
Net Operating Income	1,338	-1,338	3,466	-938	4,804	-2,276
Other Income						
Total 81000 EDUCATION REV	3,309	360	332	360	3,641	720
Total 83000 SPECIAL EVENT REVENUE	0	0	40	0	40	0
Total 84200 SPIRITUAL CINEMA REVENUE	17	10	41	15	58	25
Total 85000 Bookstore Revenue	-675	50	217	50	-458	100
Total 86000 FACILITY FUND REVENUE	0	0	0	0	0	0
Total Other Income	2,651	420	630	425	3,281	845
Net Other Income	3,153	420	1,134	425	4,287	845
Net Income	3,990	-918	4,096	-513	8,086	-1,431
less designated			40			
NET	3,990		4,056		8,086	

Center for Spiritual Living Tucson

Board Minutes & Reports

March 19, 2020



pink (lower) line attendance

blue (upper) line contributions per person per Sunday

both are rolling averages (over 8 weeks) to reduce the amount of 'noise' in the numbers.