



**Board of Trustees**

**Minutes**

**January 16, 2020**

		<b>Presenter</b>	<b>Duration</b>
<b>1</b>	<b>Call to Order and Evocation</b>	Mariann/Rev J.	5 Min
<b>2</b>	<b>Visioning</b>	Rev. Janis	10 Min
<b>3</b>	<b>Checking In</b>	All	5 min
<b>4</b>	<b>Last Month's Minutes</b>	Mariann	Done/0 Min
<b>5</b>	<b>Call to Audience</b>	Mariann	1 Min
<b>6</b>	<b>Finance/Stewardship Report</b> <b>Pages 12-14</b>		
	Discussion of current fiscal status	Dick	5 min
<b>7</b>	<b>Review Current Business Items</b> <b>Page 2</b>		
<b>7 a</b>	911 Craycroft update	Dick/Rev. J	2 min
<b>7 b</b>	Moving accounts from Chase to Vantage	Dick/Rev. J	1 min
<b>8a.1-12</b>	<b>Major Goal Check-In/Dashboard</b> <b>Page 2</b>	All	15 Min
<b>9</b>	<b>The 2019-20 Planning Cycle</b> <b>Page 3</b>		
	Community Envisioning January 24th & 25th 2020	All	2 min
	Planning/Social February to be decided	All	2 min
	Game Night 2/14	All	5 min
	Donor gratitude event	All	5 min
	Board meeting February 20th at 5:30		
<b>10</b>	<b>New Business for This Meeting</b> <b>Page 4</b>		
	Compassionate Hearts on sabbatical	all	1 min
	Music events coming soon: Rafe Perlman 2/2 & Jami Lula 3/22	all	3 min
	Central Office tithing nominations	all	5 min
<b>11</b>	<b>Tabled Items</b> <b>Page 4</b>		
	Next Steps for Consolidated Campus	Dick	0 min
	Board Covenants & Consensus	All	0 min
<b>12</b>	<b>Additional New Business for this meeting</b> <b>Page 4</b>	Mariann	2 min
<b>13</b>	<b>New Business for Next/Future Meeting</b> <b>Page 4</b>	All	2 Min
<b>14</b>	<b>Sunday's Gratitudes</b> <b>Page 4</b>	All	5 Min
<b>15</b>	<b>Review CIAB Schedule</b> <b>Page 4</b>	All	5 Min
<b>16</b>	<b>Lead Newsletter Articles</b> <b>Page 4</b>	All	2 Min
<b>17</b>	<b>Six Month Look Ahead on Calendar</b> <b>Page 6-8</b>	All	5 Min
<b>18</b>	<b>Team Reports</b> <b>Page 9-11</b>	All	5 Min
	<b>Adjourn and Pray out</b>	Rev. Janis	
	<b>Present: Mariann mMoery, Marya Wheeler, Janie Hooper, Dick Laird, Rev. Janis</b>		
	<b>Absent: no one</b>		
	<b>In Service: Scribe - Mariann; High Watch - Rev. Janis</b>		
	<b>Guests: Susan Seid</b>		

		Center for Spiritual Living Tucson					
		Board Minutes					
		January 16, 2020					
<b>1</b>	<b>Call to Order/Evocation</b>					5:30 p.m.	
<b>2</b>	<b>Visioning</b>						
		<b>Q: What is the Highest Vision or Highest Ideal for Center for Spiritual Living Tucson?</b>					
		Growth, attracting more people, sharing the teaching, affecting the positive growth of Tucson; Education; Drums beating, blue lights sweeping around, sun; bridge, path with meaning, luminescence, wide open mountain plateau, blue sky, floating clouds;					
		<b>Q: What changes, evolves, or becomes as this highest vision comes into existence?</b>					
		Expanding offerings and events, increased involvement of "congregation" & knowing, younger members; Graphic arts, striking photos, brilliant colors; Growth; Stairway to heaven, blue skies; key in a padlock opening a door, light being turned on; leaving behind trappings of prior roles, naked with love.					
		<b>Finance/Stewardship Report</b>		<b>Pages 12-14</b>			
		(How do we) let the community know of our existence; Ease, relaxation into abundance; Transparency; heaven is now; love, love & more love; Stirrups, worn, flopped over boots.					
<b>3</b>	<b>Checking In</b>					<b>All</b>	
<b>4</b>	<b>Last Month's Minutes</b>					<b>Mariann</b>	
<b>5</b>	<b>Call to Audience</b>					<b>Mariann</b>	
<b>6</b>	<b>Finance/Stewardship Report</b>					<b>Dick</b>	
		Current financial reporting		Pages 12-14			
		Administrative support		As time permits, Rev. Janis to begin the search for part-time support.			
		Opportunity Fund contribution		Mariann and Janis are working on process to create and upload videos			
<b>7</b>	<b>Review of Current Activities</b>						
		<b>Report, Decision &amp; Action</b>					
<b>7a</b>	911 S Craycroft facilities update	Sign update: Sign is lit and glowing. A few electrical details to complete. Rev. Janis researching protective covering. Larry is thinking about a timer. Security: we are implementing the camera. Alarm use will be reconsidered at a later date.					
<b>7b</b>	Moving to Vantage West CU	We are completing the process of moving many of our accounts from Chase to Vantage West Credit Union,. We plan on using Vantage West CU beginning in January.					
<b>8a 1</b>	Education	Team Report attached.					
<b>8a 2</b>	Youth Program	Team Report attached.					
<b>8a 3</b>	Tabled Items	Potential new members - nothing new to report.					
<b>8a 4</b>	Community & Growth 2019 Goals Sharing our Services Telling our Stories Increasing the Visibility of our Support Teams	CSLT as community. Planning meeting notes were reviewed with additional reporting by Janie and Marya. These potential projects and copy for the draft flier to be discussed in detail at the February Planning meeting. Our Community what is it? Why is it important? What is our responsibility as a Board to nurture it? This conversation will be ongoing throughout 2019-2020. A rule of thumb to create growth a Center needs 1 1/2 times attendees on an annual basis.					

**CSLT - Board Minutes - January 16, 2020**

		The newsletter stats for December: 607-611 subscribers Opens: Mobile 40 % and Desktop 60% 204 -231 (34%-38%) Click throughs:25%-38% link to at least one other page Mariann reviewed change in use of website after update.
<b>8a 5</b>	2020 Charity Selected	The 2020 charity was selected by the Community during service on 1/5 and we will be supporting Old Pueblo Community Services in their work to support housing for the homeless.
<b>8a 6</b>	Survey 2020	To be created Q1 of 2020. Discussion of revisions/additions to 2018 survey for 2020 to be held at our February planning meeting.
<b>8a 7</b>	Fundraising	It was agreed that fundraising efforts can be deferred for now.
<b>8a 8</b>	Small Groups	The men's group meets 1st & 3rd Thursdays for breakfast, with 6-8 in attendance. A Live Music appreciation group has started. And there is a possible group on Marianne Williams A Course In Weight Loss". Hiking may come later. Pat Masters Prosperity + group may continue to meet. A home study group of INTO THE MAGIC SHOP starts in March. 6-8 group leaders have stepped up.
<b>8a 9</b>	Six Month Look Ahead on Calendar Page 6-8	Proposal that discussion on what should be required of individuals wanting to lead small groups as part of CSLT moved to tabled items. A draft of those requirements is required for both educational and socially oriented groups. Concepts submitted will require Board approval.
<b>8a 10</b>	Team Reports Page 9-11	Volunteers are still needed with regular schedules & computer skills. Discussion under budget review.
<b>8a 11</b>	Holiday events reviewed	17 people attended Solstice on 12/20 at the Office. Endings/Beginnings had 40 people on 12/31 at the Gregory 9 people came for Stillness & Supper on 1/1/2020 at the Office and it felt like a lovely success.
<b>8a 12</b>	Board Liaisons & Team Reports	Team Reports are attached. Team assignments and report due dates on Page 5.
<b>9</b>	<b>2019-2020 Planning Cycle</b>	
	Community Envisioning	To begin the evening of Friday, 1/24, and continue during the day on Saturday 1/25. It will be held at 911 and Rev. Janis will facilitate.
	Board	February Board meeting will be on Thursday February 20, 2020 at 5:30
	February Planning/Social	February planning/social to be held 2/7 at 5:30 at the Office. The topics to include Survey & Community Outreach
	Game Night	New celebration in lieu of Reaffirmation - 2/14/2020 - Janie as lead with Susan assisting: Board and other games to be brought by all. Attendees encouraged to bring snacks to share. CSLt provides roses for attendees.
	Gratitude Dinner	The annual donor appreciation event is tentatively scheduled for 3/29 at Tasteful Kitchen. Janie to check on venue availability and menu suggestions. 47 potential honorees with an expected attendance of 30-35.

CSLT - Board Minutes - January 16, 2020	
<b>10</b>	<b>New Business for this meeting</b>
	Compassionate Hearts The Team has decided to take a break for a while.
	Music Events Rafe Perlman 2/2 & Jami Lula 3/22
	CSL Tithing Nominations CSLT could nominate our Charity nominees to the home office for tithing. Mariann to check on details.
<b>11</b>	<b>Tabled Items</b>
	Next steps for Consolidated Community Campus: Further discussion of this item is tabled until Center and community growth clarifies our needs.
	Board Covenants The Board's Covenants and decision making procedures tabled for now.
<b>12</b>	<b>Additional New Business for this meeting.</b>
	CSLT 50th Anniversary The anniversary is in September 20th. Planning to begin at the February planning meeting.
<b>13</b>	<b>New Business Items for Next Meeting</b>
<b>14</b>	<b>Sunday Gratitudes</b>
	<b>Date</b> <b>Honoree</b>
	1/19 Facility Team
	1/26 Envisioning participants (Mariann to share, as Rev. Janis is away.)
	2/2 Birthdays & Anniversaries
	2/9 Bookstore
	2/16 Love in its many forms
	2/23 Music Team
<b>15</b>	<b>CIAB Schedule Gregory School contact: 520 243-3222</b>
	1/19 Marya/Janie
	1/26 Janie/Mariann
	2/2 Dick/Dick
	2/9 Janie/Mariann
	2/16 Janie/Mariann
	2/23 Marya/Marya
	<b>Newsletter Articles</b>
	<b>Due</b> <b>Who is writing</b>
	1/19 Dick
	1/26 Mariann
	2/2 Janie
	2/9 Rev Janis
	2/16 Marya
	2/23 Dick
	3/1 Mariann
	Rotation: Rev J--> -> Marya -->Dick--> Mariann-->Janie
<b>17</b>	<b>Six Month Calendar Review</b> <b>Starts page 5</b>



CSLT - Board Minutes- January 16, 2020

		CSLT - Board Minutes- January 16, 2020								
<b>18</b>	<b>Team Reports:</b>						<b>Start page 8</b>			
	Board Liaisons & Team Reports			<b>2018-19 Board Liaison responsibilities: Revised 11/22/19</b> <b>Rev. J. Sunday:</b> Practitioner Core, Education, Admin, Ops <b>Mariann:</b> Chair, Trustees, Marcom, Outreach, Video, Photography, Membership, Bookstore <b>Marya:</b> Vice-Chair, Youth Program, Newcomers, Hosts <b>Dick:</b> Treasurer, Funding/Stewardship, Hospitality, Facilities <b>Janie:</b> Compassionate Heart, Greeters, Gratitude Banquet, Altared States, Cinema						
	<b>Due</b>	<b>10 days before Board meeting</b>								
	2/10	please email to								
	3/9	<a href="mailto:mmoery@gmail.com">mmoery@gmail.com</a>								
	4/6	Thank you!								
	<b>Adjourn and Pray Out</b>									


Center for Spiritual Living Tucson

	Sunday	Monday	Tuesday	Wednesday	Thursday	Friday	Saturday
<b>January 2020</b>	5 Potluck Sunday	6	7 Essential Ernest 1-4 & 6-9	8 4 Basics: 6:30-8:30 - Shelly & Chris Drum Circle	9	10 Women for Sobriety 6 p.m.	11
	12 Pat Masters' Group	13 Foundations 6-9	14 Essential Ernest 1-4 & 6-9	15 Four Basics 6:30-8:30	16 Men's Group 9 Board 5:30	17 Women for Sobriety 6 p.m.	18
	19	20 Foundations 6-9	21 Essential Ernest 1-4 & 6-9	22 Four Basics 6:30-8:30	23	24 Community Envisioning 6-9 p.m.	25 10 - 3 Community Envisioning
	26 Rev. Donald Graves to speak Cinema & Pat's P+3 Group	27 Foundations 6-9	28 Essential Ernest 1-4 & 6-9	29 Four Basics 6:30-8:30	30	31 Women for Sobriety 6 p.m.	<b>February 1</b>
	Sunday	Monday	Tuesday	Wednesday	Thursday	Friday	Saturday
<b>February 2020</b>	2 Rafe Perlman at Service - Potluck Pat Masters' P+3	3 Foundations 6-9 H	4 Essential Ernest 1-4 & 6-9	5 Keith Gorley: R W Trine <i>In Tune with the Infinite</i> . 4-5:30 <b>Drum Circle</b> 6:30-8:30	6 Men's Group 9 Vision Core 6:30	5:30 Board Planning @ 911 7 Women for Sobriety 6 p.m.	8
	9	10 Foundations 6-9	11 Essential Ernest 1-4 & 6-9	12 Keith Gorley: R W Trine <i>In Tune with the Infinite</i> . 4-5:30	13	14 ?Women for Sobriety 6 p.m. <b>1st Annual Game Night 6:30 p.m.</b>	15
	16 Lunch Bunch Pat's P+3 Group	17 No Foundations	18 No Essential Ernest Rev J at CSL conf.	19 Keith Gorley R W Trine <i>In Tune with the Infinite</i> 4-5:30	20 Men's Group 9 Board 5:30 Rev J at CSL conf	21 Women for Sobriety 6 p.m.	22
	23 Cinema	24 Foundations 6-9	25 Essential Ernest 1-4 & 6-9	26 Keith Gorley R W Trine <i>In Tune with the Infinite</i> 4-5:30	27	28 Women for Sobriety 6 p.m.	<b>29!</b>

Center for Spiritual Living Tucson

	Sunday	Monday	Tuesday	Wednesday	Thursday	Friday	Saturday
March 2020	1 Potluck Sunday Pat's P+3 Group	2 Foundations 6-9 Home Study: <i>Into The Magic Shop</i> days & times tbd	3 Essential Ernest 1-4 & 6-9	4 Keith Gorley R W Trine <i>In Tune with the Infinite</i> 4-5:30	5 Men's Group 9 Vision Core 6:30	6 Women for Sobriety 6 p.m.	7
	8	9 Foundations 6-9 Home Study: <i>Into the Magic Shop</i> date & time tbd	10 Essential Ernest 1-4 & 6-9	11 Keith Gorley R W Trine <i>In Tune with the Infinite</i> 4-5:30	12	13 Women for Sobriety 6 p.m.	14 Foundations classes all day at the Office
	15 Lunch Bunch Pat's P+3 Group	16 Foundations 6-9 Home Study: <i>Into The Magic Shop</i> days & times tbd	17 Essential Ernest ends 	18 Keith Gorley R W Trine <i>In Tune with the Infinite</i> 4-5:30	19 Men's Group 9 Board 5:30	20 Women for Sobriety 6 p.m. <b>Spring Equinox Labyrinth Walk 6:30-8:30</b>	21 
	22 Jami Lula at Service & at Unity No Cinema -> next week	23 Foundations 6-9 Home Study: <i>Into the Magic Shop</i> dates & times tbd	24	18 K Gorley R W Trine <i>In Tune with the Infinite</i> 4-5:30	26	27 Women for Sobriety 6 p.m.	28
	29 5th Sunday Cinema	30 Foundations 6-9	31 Roots ?	<b>4/1</b> Keith Gorley R W Trine <i>In Tune with the Infinite</i> 4-5:30	2 Men's Group 9 Vision Core	3 Women for Sobriety 6 p.m.	4
April 2020	5 Potluck Sunday Pat's P+3 Group	6 Foundations 6-9	7 Roots?	8 Keith Gorley R W Trine <i>In Tune with the Infinite</i> 4-5:30	9	10 Women for Sobriety 6 p.m.	11
	12	13 Foundations 6-9 last class	14 Roots ?	15	16 Men's Group 9 Board 5:30	17 Women for Sobriety 6 p.m.	18
	19 Lunch Bunch Pat's P+3 Group	20	21 Roots ?	22	23	24 Women for Sobriety 6 p.m.	25
	26 Cinema	27 Visioning or Power begins ?	28 Roots ?	29	30	<b>May 1</b> Women for Sobriety 6 p.m.	2
					Page 7 of 14		

Center for Spiritual Living Tucson

		Center for Spiritual Living Tucson						
		Monday	Tuesday	Wednesday	Thursday	Friday	Saturday	
<b>May 2020</b>	3 Potluck Sunday Pat's P+3 Group	4 Visioning or Power?	5 Roots ?	6	7 Men's Group 9 Vision Core	8 Women for Sobriety 6 p.m.	9	
	10	11 Visioning or Power?	12 Roots?	13	14	15 Women for Sobriety 6 p.m.	16	
	17 Lunch Bunch Pat's P+3 Group	18 Visioning or Power?	19 Roots ?	20	21 Men's Group 9 Board 5:30	22 Women for Sobriety 6 p.m.	23	
	24 Cinema	25 Memorial Day No class	26 Roots ?	27	28	29 Women for Sobriety 6 p.m.	30	
	31 5th Sunday	June 1 Visioning or Power?	2 Roots ends?	3	4 Men's group	5 Women for Sobriety 6 p.m.	6	
		Sunday	Monday	Tuesday	Wednesday	Thursday	Friday	Saturday
<b>June 2020</b>	7 Potluck Sunday Pat's P+3 Group	8 Visioning or Power?	9	10	11	12 Women for Sobriety 6 p.m.	13	
	14	15 Visioning or Power?	16	17	18 Men's Group 9 Board 5:30	19 Women for Sobriety 6 p.m.	20	
	21 Lunch Bunch Pat's +3 Group	22 Visioning or Power?	23	24	25	26 Women for Sobriety 6 p.m.	27	
	28 Cinema	29 Visioning or Power?	30	1-Jul	2	3 Women for Sobriety 6 p.m.	4 	



CSLT - Board Minutes - January 16, 2020  
Team Reports for December, 2019

**ADMINISTRATION**

Sign is beautiful, lit or unlit. Identifying a way to make it graffiti-proof, or at least graffiti-resistant. Hardware has been obtained to get security cameras working. IBE has been contacted to come show us how to use it. So far, we haven't connected.

The monthly Board Agenda, production of the Board Minutes and uploading to the newsletter and website has been handed off. Thank you, Mariann M! Wendie A continues to stuff the bulletins most weeks. Thanks, Wendie! Maria S. uploads the online calendar & blog, and makes the Sacred Cinema bulletin insert. Thank you Maria!

Kim, our new bookkeeper, continues to tidy up our accounts and preparing to shift over to Vantage West. We intend to move accounts to Vantage West in January 2020.

Submitted by: Rev. Janis

**ALTARED STATES**

This team needs an additional member, though the hard work of current members keeps the stage looking beautiful

Submitted by Janie Hooper

**BOOKSTORE**

Holmes books \$196.10 + Other Books & Magazines \$55.99 = \$252.09

Submitted by Wendie Arison

**CINEMA**

No Movie in December, they will resume in January.

**COMMUNITY BUILDERS OUTREACH**

Discussion of our Community how to enrich it and build it was the focus of the 12/12 Planning Social and will be a focus during 2020.

Submitted by: Mariann Moery

**COMPASSIONATE HEART**

Calls 2, Sister Jose 18 hours. This will be the last report for this Team until as it takes a break.

Submitted by: Janie Hooper

**E-BAY STORE**

On hiatus until a manager is in place.

Submitted by: Mariann Moery

**ECCLESIASTICAL CORE**

Our Sunday morning meditation leaders are continuing to shift and some new volunteers have taken charge when one of our scheduled meditation leaders did not appear.

Lysa Allman-Baldwin spoke and presented a workshop about dealing with Holiday Blues on December 1st. Six people attended.

During December services, and during the Solstice Candlelighting, we recognized the light found in all faith and philosophical traditions.

Submitted by: Rev. Janis

**EDUCATION CORE**

The December Wednesday night classes continued, the topic was Gratitude Becomes Us, with 6-8 persons attending. January plans include a Stillness & Supper meditation, a Drum Circle, and the more-or-less standard January non-certificated 'basics' classes.

Michael Tucker continued his Emma Curtis Hopkins Scientific Christian Mental Practice bookstudy, late Sunday afternoon. Attendance is small, but the conversations are deep.

Keith Gorley completed an Eric Butterworth Unity of All Life bookstudy on Saturday mornings. Attendance varied between 4 and 9. His next book study will start in February on Ralph Waldo Trine's In Touch with the Infinite.

Submitted by: Rev. Janis

## **FACILITIES TEAM**

Report is included as agenda item.

Submitted by: Dick Laird

## **FUNDING TEAM**

Team met as part of budget review/reforecast

Submitted by: Dick Laird

## **GREETERS**

Lynn, our new volunteer, will be learning the ropes, and then we'll see how to work her into the rotation. When someone is eager, we don't want to lose them, or for them to lose their enthusiasm!

Submitted by Janie Hooper

## **HOSPITALITY TEAM**

Another successful lunch was held in December with help from the Team. The team would welcome a few more members.

Submitted by: Dick Laird

## **HOST TEAM**

Members: Pat Masters, Holly Baker; Jeff Johnson and Beryl joined the team. Renee Mercer has resigned, Pat Masters hosted on second Sunday. December hosting also included lighting of the candles of the world religions.

Submitted by: Marya Wheeler

## **MARKETING AND COMMUNICATIONS TEAM**

Planning meeting and email readership in the Community/Growth Agenda Item.

Submitted by: Mariann Moery

## **MEMBERSHIP**

Foundations class to begin 1/14/2020

Submitted by: Mariann Moery

## **MINISTER'S TRAVEL PLANS**

Rev Janis took a few days away during Winter Break. No services were affected.

Submitted by: Rev. Janis

## **MUSIC/SOUND**

We remain grateful for our stage band and our volunteer singers, and for the high quality music we enjoy every Sunday.

Kristen Chandler Zimmerman sang one Sunday.

David Prouty and Rev Janis have recreated the CandleLighting service (and winter social) which took place at the Education Center on December 20th. The ritual was attended by 17 people, who had a great time. David and Chris (Wheeler) played music for the Endings & Beginnings ritual on the 31st. Attendance was about average with approximately 40 people attending. Ritual assistants were Shelly Dunn (@ burning bowl), Gregg Molzon & Marsha Merten (sentinel) and Jeannie Graham (future-welcomer)

David and the Orchestra are still working out how to replace the Orchestra's performance piece before Rev Janis's reminder with 7-8 minutes of congregational singing.

Submitted by: Rev. Janis

## **NEWCOMERS TEAM**

8 guests; 5 emails; 2 tel numbers: located by - 1 from School, 1 internet; 1 from ad.

Submitted by Marya Wheeler

## **PRACTITIONER CORE**

Shelly conducted a meditation during the first Wednesday night Gratitude class in December. She and Chris Wheeler plan to offer a drum circle on January 8th. If it 'takes root' it may become a regular monthly occurrence. She is also contemplating offering a short series on Ernest Holmes This Thing Called You in the new year.

Submitted by: Rev. Janis

## **SMALL GROUPS**

Information required and format to be discussed at a future board meeting.

Submitted by: Mariann Moery

## **YOUTH & FAMILY**

Members: Maria Schuchardt, Jay Endicott, Nicole Miller & Tamara Morrison. Program to begin in January. A new format

Submitted by Marya Wheeler

### **Vision Core Notes - started 1/2/22020**

**Vision Core Notes: Participating : Barbara McGill, Christina Reed, Shelly Dunn RScP, Carol Nigut, Rev. Janis**

**What's the highest vision, highest ideal for Center for Spiritual Living Tucson?**

A place of Unity. Peace and Calm. Experiencing joyful Stillness; Spring bubbling up from ground expanding; big red hearts and a voice that said, 'It's coming!'; Deeply rooted, standing tall; Peace, love, kindness, compassion, community. Move through the world as a shining demonstration, inspiring others.

**What changes, evolves, becomes (releases, moves in or away) as this vision comes into being?**

Individual Self merges with whole, immerses in unified field, recalibrates letting go of past and inflexible boundaries, ways of being. Emergence and transformation; big red hearts and a voice that said, 'It's coming!'; Open arms to the larger Tucson community.; trust, the image of a galaxy expanding.

**Is there anything else that wants to be known, realized or understood?**

Gratitude for process, for existence and CSLT well- being, constant support and foundation for emergence; Carnival cotton candy; big red hearts and a voice that said, 'It's coming!'; Be unafraid to be seen and known.; Don't be afraid & hide your light under a bushel.; More good than you can imagine.

Center for Spiritual Living Tucson

Board Agenda & Reports

January 16, 2020

**7 Finance/Stewardship Report**

**Dick Laird**

**Executive Summary:**

December 2019 was a 5-Sunday month, with two special rituals/ceremonies. Average Sunday attendance: 54.

The Board has agreed to sustain and hold the vision of increased attendance by individuals willing and able to participate (in all ways and on many levels), this allows us opportunities to expand our reach in Tucson.

	<u>Total Sunday Offerings &amp; P+</u>	<u>New Designated Monies</u>	<u>Total Income*</u>	<u>Total Expenses*</u>	<u>Net Income*</u>	<u>\$/Weekly Attendee</u>	<u>Avg Weekly Attendance</u>
December	16,791	12,000	17,741	10,803	6,938	61.96	54
November	\$9,838	<683>	10,589	9,444	1,145	47.76	52
October	\$15,041	<283>	15,484	11,111	4,373	69.00	55
September	\$10,683	100	12,644	10,690	1,954	43.78	49

\* Presently we have a stand-alone Facility Fund, Scholarship Fund, a Practitioner Fund, an Opportunity Fund and a Compassionate Heart fund. All are designated and are not considered as part of Total Income or Total Expenses.

§ Used \$1,300 out of Opportunity Fund for payment of 1/2 of Website Upgrade © first payment from sale of raw land

<u>Cash Balances</u>	<u>December</u>	<u>November</u>	<u>October</u>	<u>September</u>
Chase General Ops Checking	\$27,525	\$19,314	\$21,517	\$13,761
Vantage W. Gen Ops Checking	\$3,628	\$4,628	\$5,629	\$6,633
Chase Education (Savings) Fund	\$4,776	\$4,476	\$4,066	\$3,906
Vantage W. Education Savings	\$3,003	\$3,003	\$3,002	\$3,001
Chase (Operating) Savings	\$0	\$0	\$0	\$0
Chase Practitioners' Savings	\$412	\$412	\$412	\$412
Designated Holdings (Music)	\$0	\$0	\$0	\$0
<b>SubTotal</b>	<b>\$39,344</b>	<b>\$31,833</b>	<b>\$34,626</b>	<b>\$27,713</b>
Chase Opportunity Fund ☞	<b>\$16,401</b>	<b>\$4,401</b>	<b>\$4,401</b>	<b>\$5,701</b>
Chase Facility Fund Savings	\$361	\$1,000	\$1,000	\$1,000
Vantage W. Facility Fund Savings	\$5,414	\$5,413	\$2,623	\$2,623
VWCU Improvement Fund	\$5	\$5	\$3,150	\$7,116
Facility Fund Invest. Acct	\$0	\$0	\$0	\$0
<b>Total</b>	<b>\$61,525</b>	<b>\$42,652</b>	<b>\$45,800</b>	<b>\$44,153</b>

☞ We received an anonymous designated gift, part of which is to be used for 'sustainable' marketing activities. We called this the Opportunity Fund. Out of this account we have funded the website upgrade & partially funded of our Office improvement fund.

**Comparison between December 2018 and December 2019:**

Attendance/Sunday	DEcreased by	3	
Offerings/Month	INcreased by	\$4,970	Several big donations during
Offering/person/Sunday	INcreased by	\$20.77	December 2019
Total Income	INcreased by	\$5,240	
Expenses	INcreased by	\$600	
Net Income	INcreased by	\$4,639	

**Status of the CSLT Facility Fund**

Facility Fund Investment Acct Deposits: Initial Deposit \$50,000 (Nov12), Deposit \$10,236 (Mar13) Deposit \$15,188 (Dec13)

Investment Account closed December 2016 to purchase raw land at 4961 E. 22nd St. On June 3, 2019 we sold our raw land on 22nd St, and have agreed to serve as 'bank' for the buyer for five years with annual payments, on June 3 of each year.

<u>Date</u>	<u>CSLT Contribution</u>	<u>Various Projects &amp; Interest</u>	<u>Personal Donations</u>	<u>\$ Total</u>
Year End 2009				29,365
Year End 2010				48,710
Year End 2011				70,361

# Center for Spiritual Living Tucson

## Board Agenda & Reports

January 16, 2020

Year End 2012	6,800	1,045	1,430	79,636
Matching Fund Reserves			2,900	82,536
Year End 2013 (Inspection)	<1,800>	4,780	3,327	88,843
Year End 2014	<600>	1,789	25,884	115,936
Year End 2015 (Moved to River Rd)	<5,223>	<1,786>	7,109	116,027
Year End 2016 (Purchased land)	<102,024>	2,068	2,440	18,511
Year End 2017 (InvAcctClosed.)		164	1,500	20,175
Year End 2018		112	1,000	21,287
January				21,287
February (Legal counsel, possible land sale)		<210>		21,077
March		1		21,078
April				21,078
May			100	21,178
June			100	21,278
June (partial pmnt, sale of 4961 E 22nd St)		35798		57,076
June (escrow on 911 S. Craycroft)		<5,000>		52,076
June (inspections, repairs, etc)		<2,075>		50,001
July (partial refund of security deposit)		1,095		51,096
July (interim roof repairs + handyman estimate)		<655>		50,441
August (close escrow on 911, start repairs, use \$5,000 from Opportunity Fund)	+\$5,000	<42,460>		12,981
September (continue repairs)		<5,625>		7,356
October (repairs continue+raffle for sign)	+\$500	<1,838>		6,018
November (repairs continue, & other improvements)		<1,498>		4,520
December (used \$1,434 of GenOps for bldg repairs)		<179>		4,341

Expenses related to move to 911 S. Craycroft	On CSLT CC unless otherwise stated			
Escrow Pmnt	9-Jun-19	\$5,000.00	CSLT ck given to Long Realty	
Primary Inspection (Steve Rhine)	13-Jun-19	\$300.00		
Sewer Inspection (Wildcat Plumbing)	13-Jun-19	\$125.00		
Termite Inspection (Kino)	13-Jun-19	\$85.00		
AZ Corporation Commission	15-Jun-19	\$62.50		
Keys, GFI outlet, etc. (Ace Hardware)	20-Jun-19	\$71.54	pd by personal cash, reimbursable to Dick Laird	
Moving wall-mounted TV (Landon Rodger, no invoice)	21-Jun-19	\$135.00	pd by pers. check, reimburseable to jmf	
Moving Expenses (Two Men and a Truck)	22-Jun-19	\$1,277.50		
More keys (Ace Hardware)	29-Jun-19	\$18.19		
Ron Peloquin, handyman (to give us estimate)	17-Jul-19	\$75.00	CSLT ck cut for Ron P.	
Hallmark Roofing	19-Jul-19	\$580.00		
Downpayment from Chase	8-Aug-19	\$25,000.00	cashiers check from Chase	
Downpayment from VWCU	8-Aug-19	\$16,381.50	Cashiers check from VWCU	
Epperson Electric	28-Aug-19	\$950.00	Ck from VWCU reserve (Facility Fund) Acct	
Five Star Painting Downpayment	30-Aug-19	\$128.42	Ck from VWCU reserve (Facility Fund) Acct	
Diamondback Roofing (deposit)	11-Sep-19	\$2,812.50	Ck from VWCU reserve (Facility Fund) Acct	
Diamondback Roofing (remainder)	24-Sep-19	\$2,812.50	Ck from VWCU reserve (Facility Fund) Acct	
Five Star Painting	10-Oct-19	\$1,155.78	Ck from VWCU reserve (Facility Fund) Acct	
Downpayment (50%) on Sign (for Budget Signs)	23-Oct-19	\$682.56	CSLT Check (\$500 raised by raffle on 10/6)	
Downpayment WindowWorldOfTucson	11-Nov-19	\$460.00		
Valentine Plumbing	6-Nov-19	\$355.78	Ck from VWCU reserve (Facility Fund) Acct	
Remainder of Budget Signs payment	25-Nov-19	\$682.55	CSLT ck	
Remainder to WindowWorldOfTucson		\$179.00		
		\$59,330.32	sum (as of end December 2019)	

Because we needed to have a set-aside repair fund to cover identified repairs (from inspectors' reports), we needed to have \$11,000 in a separate fund (at VWCU) to cover those costs. To set that repair fund up, we used \$5,000 from the Opportunity Fund.

# Center for Spiritual Living Tucson

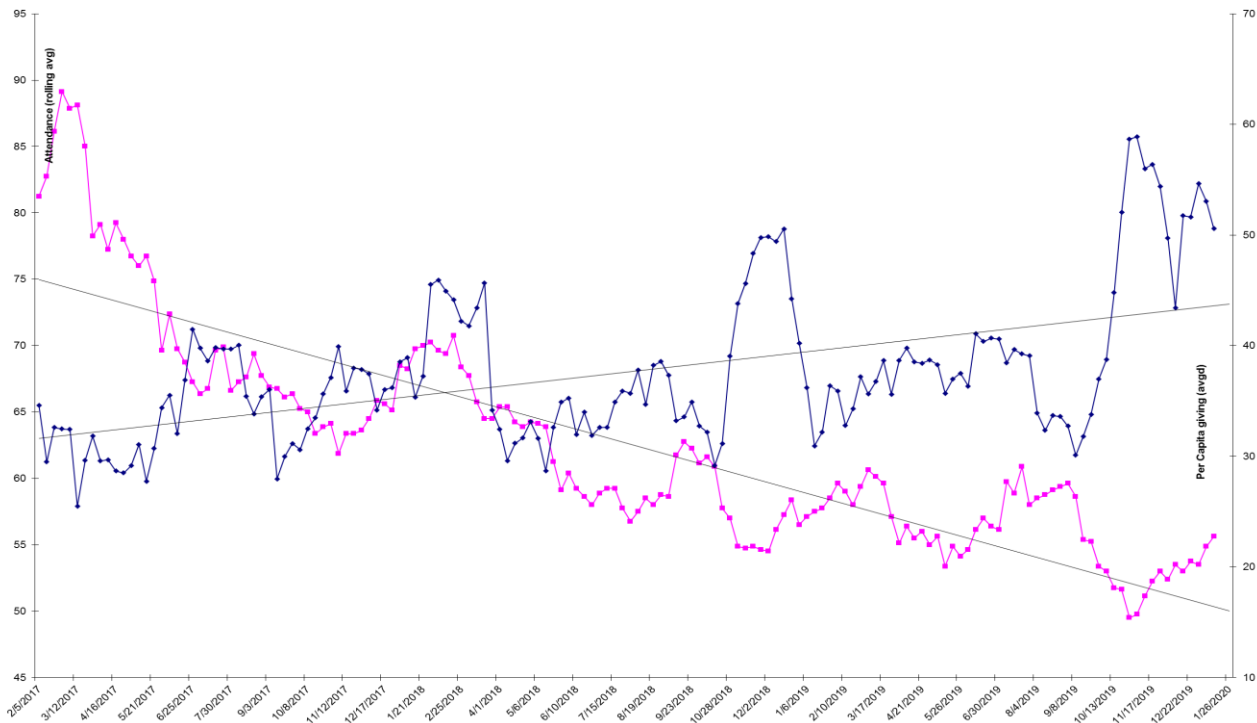
## Board Agenda & Reports

January 16, 2020

### Range Report for 4th Quarter (with previous quarters for comparison)

Donations/ qtr	4Q2019		3Q2019		2Q2019		1Qtr 2019		4Qtr 2018	
	All	Extnd Ldrs	All	Extnd Ldrs	All	Extnd Ldrs	All	Extnd Ldrs	All	Extnd Ldrs
>\$2,000	4	1	0	0	1	1	1	0	1	0
\$1,500- 1,999	3	1	4	2	4	1	3	1	5	1
\$1,000- 1,499	4	2	4	4	3	3	2	2	9	5
\$750-999	5	2	3	2	2	1	3	2	1	1
\$500-749	12	5	7	3	11	6	8	5	10	4
\$250-499	11	4	12	2	11	4	11	6	13	5
\$100-249	16	2	13	5	22	2	25	1	20	2
\$1-99	12	1	24	1	15	0	22	1	20	2
0 or UnID'd	?	2	?	2	?	2	?	1	?	2
<b>Total Number</b>	<b>67+</b>	<b>20</b>	<b>67+</b>	<b>21</b>	<b>68+</b>	<b>20</b>	<b>75+</b>	<b>19</b>	<b>79+</b>	<b>22</b>

For the 4<sup>th</sup> quarter of 2019, the bright line (20% of the contributors donated 80% of the income) was \$600 and included 9 of the extended leadership out of 22 contributors. For the 3<sup>rd</sup> quarter of 2019, the bright line was \$400 and included 13 of the extended leadership out of 24 contributors. For the 2<sup>nd</sup> quarter of 2019, the bright line was \$400 and included 13 leaders out of 25 congregants. For the 1<sup>st</sup> quarter of 2019, the bright line was \$300 and included 15 leaders out of 25 total congregants. For the 4<sup>rd</sup> quarter 2018, the 'bright line' was \$500 and included 10 leaders out of 26 congregants.



pink (lower) line attendance

blue (upper) line contributions per person per Sunday

both are rolling averages (over 8 weeks) to reduce the amount of 'noise' in the numbers.