



**Board of Trustees
Minutes
January 17, 2019**

		<u>Presenter</u>	<u>Duration</u>
1	Call to Order and Evocation	Mariann/Rev. Jar	5 Min
2	Visioning	Rev. Janis	10 Min
3	Checking In	All	10 Min
4	Knowing Love Exercise	Rev. Janis	5 min
5	Last Month's Minutes	Pat	Done/0 Min
6	Call to Audience	Mariann	2 Min
	<i>This time provides an opportunity for audience members to bring topics to the board's attention for future Minutes. Topics raised during Call to Audience will not be acted on at this meeting. Audience members are asked to keep their comments to no more than three minutes.</i>		
7	Finance/Stewardship Report	Dick Laird	
	Discussion of current fiscal status	All	5 min
8	Review Current Business Items		
8 a	Facility Update & 22nd St. property	Rev Janis/Mariann	10 Min
8b.1-13	Major Goal Check-In/Dashboard	All	10 Min
8 c	Community Envisioning	All	5 min
8 d	Board & Rev. Janis signed her Letter of Call for 2019 on 1/4.	Mariann	2 min
8 e	Ordination Ceremony and Celebration	All	2 Min
8 f	Board Covenants & Consensus	All	10 Min
9	The 2018-2019 Planning Cycle		
	Board Meeting schedule/Minutes	All	2 min
	Planning Meeting schedule/Minutes	All	2 min
10	New Business for This Meeting	Mariann	2 min
	Board membership	All	10 min
	Ordination celebration at 3/3 Pot Luck	All	5 min
11	Tabled Items		
	Next Steps for Consolidated Campus	Dick	0 min
12	Additional New Business for this meeting	Mariann	2 min
13	New Business for Next/Future Meeting	All	2 Min
14	Sunday's Gratitudes	All	5 Min
15	Review CIAB Schedule	All	5 Min
16	Lead Newsletter Articles	All	2 Min
17	Six Month Look Ahead on Calendar	All	5 Min
18	Team Reports	All	5 Min
	Adjourn and Pray out	All	

Present: Mariann Moery, Pat Masters, Dick Laird, Marya Wheeler, Janie Hooper, Renee Mezzone, Rev Janis Farmer

Absent:

In Service: High Watch, Visioning - Rev. Janis; Scribe - Mariann

Guests: Barbara McGill

Center for Spiritual Living Tucson

Board Minutes
January 17, 2019

- 1 **Call to Order/Evocation** 6:30 p.m.
2 **Visioning**

Q: What is the Highest Vision or Highest Ideal for Center for Spiritual Living Tucson?
to inform one of the possibilities, campus in several buildings, behind a wooden fence (the kind with only 2 posts across), swatch of color red; tulips blooming in a terra cotta pot, reaching skyward, Easter eggs on green grass, chanting, flowers, puffy white clouds above the stage at Gregory, mushroom (unrelated to the clouds) the bridge in Monet's garden, beautiful, peaceful and uplifting, grey, working through to the core, good tired at the end of the working day of physical effort.

Q: What changes, evolves, or becomes as this highest vision comes into existence?
Financial support, Lights on in cozy homes with fancy filigree on the windows, Sorrel-colored horses running in a green pasture --Spring, spring, spring!, open doors, open minds, open hearts, opening a farm gate, open ALL the gates, jarring disharmony mellows out and comes into alignment, leaner, stronger energy,

Q: Is there anything else that wants to be known, understood, or realized? What else?
Education, Seagulls with immense wingspan taking flight, neat one boat, there is a larger flock, Ticker-tape-parade - streamers and confetti filling the air -people in convertibles smiling and waving, calm still lake, clear water, keep your eyes wide open and trust the process, a tall tower, brilliant sunlight reflecting in glass window, bright sunshine, joyous day.

- 3 **Checking In** **All**
4 **Knowing Love Exercise - Sharing Personal Values** **Rev. Janis**
Action: volunteer for next meeting's Exercise **Renee**
5 **Approval of Last Month's Minutes** **Done & posted in Newsletter**
6 **Call to Audience** **Mariann**
7 **Finance/Stewardship Report** **Dick**
Executive Summary:

Separate Sheets for financial reports and Budget

8 **Review of Current Activities**

	Report, Decision & Action
a. Facility Update, office & 22nd St location	<p>With the transition of our landlord, a new one year lease is being signed at the same rental rate.</p> <p>Rev. Janis and Mariann met with a Real Estate Lawyer to discuss the offer for the 22nd St. property. He was approving of the language in the offer. He saw no troublesome or questionable language in the offer. Next step is for Rev. Janis and Mariann to contact Stewart Title and have documents created with our counter offer regarding length of the land loan and the interest rate to be paid.</p>

**Major Goals initiated 1/7/2017 planning mtg with continuance approved at 12/12/2017 planning mtg.
New Goals added at 2018 Intention Setting 2/2-3/2018.**

CSLT - Board Minutes - January 17, 2019

b 1	Education	See Education Report page 9
b 2	Financial Stability	December finished in good shape. We spend no money we do not have. Details are in the separate financial report.
b 3	Growth	<p>Growing our community is our primary need at this time. Mariann to create a smaller flier for distribution by all. Pat is reaching out to those not currently attending, Janie to contact Theresa at Sacred Space when she next attends. Bringing back coffee time at Service - especially during winter months, which requires Hospitality growth. No response to take responsibility</p> <p>Rev Janis & Mariann to meet again with Ron Bowen at the Gregory School.</p> <p>A donation to fund sustainable growth will be used, in part, to solicit and develop website with current practices & more.</p> <p>NewComer's Team - see report page 9</p> <p>Community Builder's Team Report Page 9</p>
b 4	Administrative Support for Rev. Janis	<p>Volunteers are needed with regular schedules. Rev. Janis has circulated job descriptions that would support her.</p> <p>Skill and regular schedules are important.</p>
b 5	Election of Officer Board Liaisons & Team Reports	<p>Election of Vice-Chair: Marya Wheeler was elected by a unanimous vote.</p> <p>2018-19 Board Liaison responsibilities: Revised 1/17/19</p> <p>Rev. J. Sunday: Practitioner Core, Education, Admin, Ops</p> <p>Mariann: Chair, Trustees, Marcom, Outreach, Video, Photography</p> <p>Marya: Vice-Chair, Youth Program, Newcomers</p> <p>Pat: Secretary, Membership, Volunteer Party, Ordination Ceremony, Altared States</p> <p>Dick: Treasurer, Funding/Stewardship, Hospitality, Facilities</p> <p>Janie: Compassionate Heart, Ushers, Gratitude Banquet</p> <p>Renee: Hosts, Bookstore, Cinema</p>
b 6	Small Groups	<p>POWER OF 8 book study groups are the next project. Two new Power of 8 Groups started the week of 16. . The men's group meets 1st & 3rd Thursdays for breakfast, with 6-8 in attendance.</p> <p>The Catalina Artist Group meets 1st Mondays. 5-7 attend</p>
b 7	Expand reach of education classes.	Classes have begun for winter 2019 with varying hours. New subject/books are being incorporated.
b 8	Conscious Center Success Series	Rev. Janis, Mariann, Pat and Renee attended the 1/12/19 conference in Phoenix.
b 9	Women for Sobriety	First meeting has been held at the office.
b 10	CSLT 2019- Charity	December - Charities presenting: Sister Jose; Old Pueblo Community Services and Youth On Their Own. The Congregants voted 1/6/19 - Youth on Their Own will be the 2019 Charity.

CSLT - Board Minutes - January 17, 2019

b 11	Donor Gratitudes	Rev. Janis, Janie and Mariann met. Janie to contact Tasteful Kitchen for available nights and menu options. Hospitality and Altared States to help and the CSLT Orchestra will play. Invites to go out when date & menu options are set.
b 12	Small Groups	Power of 8 groups are forming for February/March.
b 13	Pet blessing	Rev. Janis will discuss at the next meeting with Ron Bowen at The Gregory about the organization of Dogtoberfest.
8 c	Community Envisioning	Annual Visioning and Planning week-end, to be January 25th and 26th at the Office. Rev. Janis will lead as she did last year.
8 d	Letter of Call	Rev. Janis signed her 2019 Letter of Call at the 1/4/19 Planning session.
8 e	Ordination Ceremony and celebration	To be held 2/19 at Unity for Peace 7-10pm. Rev. Janis is organizing with help as requested.
8 f	Board Covenants	The Board's Covenants and decision making procedures tabled for discussion later.
9	2018-2019 Planning Cycle	
	Board	February Board meeting will be on Thursday 2/21/19 at 6:30
	Planning	Planning social on February 8th at Pat's- beginning at 5:30.
10	New Business for this meeting	
	Board Membership Change	Sheila Campbell has resigned from the Board effective 1/9/19. Notes of appreciation for her service were sent. Renee Mezzone has graciously agreed to complete the remainder of Sheila's term - through October 2019. We gladly welcome her return to the Board.
	Ordination party at March 3rd Pot Luck	To include those who could not attend the 2/19 ritual, and just to party again.
11	Tabled Items	
	Next steps for Consolidated Community Campus:	Further discussion of this item is tabled until Center and community growth clarifies our needs.
12	Additional New Business for this meeting.	
13	New Business Items for Next Meeting	
14	Sunday Gratitudes	
	Date	Honoree
	1/20	Diversity
	1/27	Envisioning Attendees
	2/3	Birthday/Anniversaries
	2/10	Loves, various and inclusive
	2/17	Wendie - Bookstore
	2/24	All people who are or have done Power of 8 groups
	3/3	Birthday/Anniversaries

CSLT - Board Minutes - January 17, 2019

15

CIAB schedule	
1/20	Pat/Jane
1/27	Pat/Mariann
2/3	Dick/Dick
2/10	Pat/Janie --> Mariann
2/17	Renee/Janie --> Mariann
2/24	Renee/Janie
3/3	Dick/Dick

16

Lead Newsletter Articles	
Due	Who is writing
1/20	Rev Janis
1/27	Mariann & Rev. Janis (Quarterly report & Envisioning highlights)
2/3	Dick
2/10	Janie
2/17	Pat
2/24	Marya
3/3	Renee

Rotation: Rev J--> Mariann -->Dick--> Janie--> Pat--> Marya--> Renee'

17

Six Month Calendar Review **Starts page 5**

Team Reports: Addendum: submitted before Board mtg.

18

To Mariann: 7-10 days prior to meeting

Questions to be brought to meeting.

Start page 9

Adjourn and Pray Out

Center for Spiritual Living Tucson

	Sunday	Monday	Tuesday	Wednesday	Thursday	Friday	Saturday
January 2019	6 Potluck Sunday Voting on Charity must be present	7	8 Meditation is More... 1-4 (8 cls) Power of Your Word 6:30-8:30 8 classes	9 Bless (The) Being 6:30-8:30	10 Power of Eight Gp 6:30p	11 Women for Sobriety 6:30	12
	13 Membership Class #1	14	15 Meditation is More.. 1-4 2 of 8 Power of Your Word 6:30-8:30 Class 2 of 8	16 Claim (The) Good I 6:30-8:30	17 Men's Grp 9a Board Meeting 6:30p Power of Eight Gp 6:30p	18 Women for Sobriety 6:30	19
	20 Lunch Bunch Membership Class #2	21	22 No Class	23 Claim (The) Good II 6:30-8:30	24	25 Community Envisioning 6-9 Women for Sobriety 6:30	26 Community Envisioning 10- 4
	27 Cinema	28	29 Meditation is More.. 1-4 #3 Power of Your Word 6:30-8:30	30 Develop (The) Access 6:30-8:30	31	Feb 1 2019 Women for Sobriety 6:30	2

Center for Spiritual Living Tucson

	Sunday	Monday	Tuesday	Wednesday	Thursday	Friday	Saturday
February 2019	3 Potluck Sunday	4 Catalina Emerging Artists, offsite 6pm	5 Meditation is More... 1-4 #4 Power of Your Word 6:30-8:30 Class 4 of 8	6 David Richo's <i>Five Things</i> - (Pat Masters, Facil.) 6:30-8:30 # 1of 5	7 Men's Group 9 Vision Core 6:30	8 Women for Sobriety 6:30 Board Planning Social	9
	10	11	12 Meditation is More... 1-4 #5 Power of Your Word 6:30-8:30 Class 5 of 8	13 David Richo's <i>Five Things</i> - (Pat Masters, Facil.) 6:30-8:30 Tentative: . Wild Mind online only 6+ weeks	14 ReAffirmation of Vows at the office 7 pm	15 Women for Sobriety 6:30	16
	17 Lunch Bunch	18	19 No classes Ordination Celebration	20 David Richo's <i>Five Things</i> - (Pat Masters, Facil.) 6:30-8:30 Tentative: . Wild Mind online only 6+ weeks	21 Men's Group 9 Board Meeting 6:30	22 Women for Sobriety 6:30	23
	24 Cinema	25	26 Meditation is More... 1-4 #6 Power of Your Word 6:30-8:30 Class 6 of 8	27 David Richo's <i>Five Things</i> - (Pat Masters, Facil.) 6:30-8:30 Tentative: . Wild Mind online only 6+ weeks	28	22 Women for Sobriety 6:30	2

Center for Spiritual Living Tucson

	Sunday	Monday	Tuesday	Wednesday	Thursday	Friday	Saturday
March 2019	3 Potluck Sunday	4 Catalina Emerging Artists, offsite 6pm	5 Meditation is More ... 1-4 #7 Power of Your Word 6:30-8:30 Class 7 of 8	6 David Richo's <i>Five Things</i> - (Pat Masters, Facil.) 6:30-8:30 5 of 5 Wild Mind online only 6+ weeks 6:30-8:30	7 Men's Group 9 Vision Core 6:30pm	8 Women for Sobriety 6:30	9
	10	11	12 Meditation is More 1-4 Last Power of Your Word 6:30-8:30 Last Class	13 Tentative: . Wild Mind online only 6+ weeks 6:30-8:30	14	15 Women for Sobriety 6:30	16
	17 Lunch Bunch	18	19	20	21 Men's Group 9 Board Meeting 6:30	22 Women for Sobriety 6:30	23
	24 Cinema	25	26	27	28	29 Women for Sobriety 6:30	30
April 2019 Home Study Groups	31	April 1 Catalina Emerging Artists, offsite 6pm	2 Visioning 1st class 8 6:30-9:30	3	4 Men's Group 9 Vision Core 6:30pm	5 Women for Sobriety 6:30	6
	7 Potluck Sunday	8	9 Visioning 2 of 8 6:30-9:30	10	11	12 Women for Sobriety 6:30	13
	14	15	16 Visioning 3 of 8 6:30-9:30	17	18 Men's Group 9 Board 6:30	19 Women for Sobriety 6:30	20
	21 Lunch Bunch	22	23 Visioning 4 of 8 6:30-9:30	24	25	26 Women for Sobriety 6:30	27
	28 Cinema	29	30 Visioning 5 of 8 6:30-9:30	May 1	2 Men's Grp 9 Vision Core 6:30	3 Women for Sobriety 6:30	4

Center for Spiritual Living Tucson

	Sunday	Monday	Tuesday	Wednesday	Thursday	Friday	Saturday
May 2019	5 Potluck Sunday	6 Catalina Emerging Artists, offsite 6pm	7 Visioning 6 of 8 6:30-9:30	8		9 10 Women for Sobriety 6:30	11
	12	13	14 Visioning 7 of 8 6:30-9:30	15	16 Men's Grp 9 Board Mtg. 6:30	17 Women for Sobriety 6:30	18
	19 Lunch Bunch	20	21 Visioning 8 of 8 6:30-9:30	22	23	24 Women for Sobriety 6:30	25
	26 Cinema	27	28	29	30	31 Women for Sobriety 6:30	June 1st

June 2019	2 Potluck Sunday	3 Catalina Emerging Artists, offsite 6pm	4	5	2 Men's Grp 9 Vision Core 6:30	7 Women for Sobriety 6:30	8
	9	10	11	12	13	14 Women for Sobriety 6:30	15
	16 Lunch Bunch	17	18	19	20 Men's Group 9 Board 6:30	21 Women for Sobriety 6:30	22
	23 Cinema	24	25	26	27	28 Women for Sobriety 6:30	29

Addenda: Team Reports

ADMINISTRATION

Normal operations continue. Gail C. continues to stuff bulletins each week. Thanks Gail! Maria S uploads the online calendar & blog. Thank you Maria!

Submitted by: Rev. Janis

ALTARED STATES

enhance the appearance of the platform each week. Need 1-2 extra members, especially to cover 5th Sundays per Barbara Arissa.

Submitted by: Janie Hooper

BOOKSTORE

Holmes - \$37.85, Other books & Magazines - \$151.40, Sunday CDs - \$15.00 Total for December - \$204.25

Submitted by Wendie Arison

COMMUNITY BUILDERS OUTREACH

Meeting again with Ron Bowen at The Gregory, working on new flier.

Submitted by: Mariann Moery

COMPASSIONATE HEART

Calls 6; Emails 1; Rides 6, Cards 1; Errands 5

Submitted by: Wendie Arison

E-BAY STORE

On hiatus until a manager is in place.

Submitted by: Mariann Moery

ECCLESIASTICAL CORE

Our practitioner core continues to recreate itself. We appreciate other members of our congregation stepping up to facilitate the Sunday morning meditation, as we figure out how we want to show up in Tucson and beyond. We continue to make adjustments in how we 'do' Sunday Service to encourage a sense of

Submitted by: Rev. Janis

EDUCATION CORE

The Journey continued with Rev Janis facilitating a 6-week series on gratitude with 8-11 attending each week. This series concluded on Dec 12. Our winter Taize was held on Dec 19 with 8 attending. Foundations of the Science of Mind completed with 6 attending, 3 are new students and 3 are auditing. New classes, certificated and non-certificated, with a variety of instructors are planned for early January, including at least two new Power of Eight groups.

EVENTS

Upcoming events include two guest musicians in early 2019.

Submitted by: Mariann Moery

FACILITIES TEAM

No new searches this month.

Submitted by: Dick Laird

FUNDING TEAM

Team met as part of budget review/reforecast

Submitted by: Dick Laird

HOSPITALITY TEAM

The hospitality team desires more volunteers.

Submitted by: Janie Hooper

HOST TEAM

All continues to be all good.

Submitted by Pat Masters

MARKETING AND COMMUNICATIONS TEAM

Website review has been requested. 3 year analytics and overview of other Center's websites ongoing.

Submitted by: Mariann Moery

MEMBERSHIP

Services

Submitted by: Pat Masters

MINISTER'S TRAVEL PLANS

December travel happened during the week the office is closed. No travel planned for January with the two certificated classes on Tuesdays.

Submitted by: Rev. Janis

MUSIC/SOUND

Leona Freeman sang for four of the Sundays in December. Anna Mello-Lewis plans to sing the last Sunday of January. We are infinitely grateful for our volunteer singers, and our CSLT Orchestra. Our next paid Sunday Morning musicians will be Cerise Patron on January 20, 2019 and Rafe Pearlman on February 3, 2019. We have spent our guest musician budget for 2018. We greatly appreciate our music team and the value they add to our Sunday Services.

Submitted by: Rev. Janis

NEWCOMERS TEAM

No report

Submitted by: Sheila

PRACTITIONER CORE

There were no attendees for the Winter Labyrinth walk on December 22nd. There were, however, six attendees for the "Rox & Sox" Gourmets for God event on January 6th

Submitted by: Rev. Janis

ORDINATION CEREMONY & CELEBRATION

Scheduled for February 19th at Unity of Peace. The 3/3 Pot Luck will also celebrate Rev. Janis' ordination.

Submitted by: Pat Masters

SACRED CINEMA

Continues monthly with Tom Bacon facilitating.

Submitted by: Pat Masters

SMALL GROUPS

Information required and format to be discussed at 2/21 board meeting.

Submitted by: Mariann Moery

USHERS

Plenty of ushers and running smoothly

Submitted by: Janie Hooper

VIDEO & PHOTOGRAPHY

Photography will continue to be provided by volunteers. Video is on hold pending budget and space issue resolutions.

Submitted by: Mariann Moery

VOLUNTEER APPRECIATION

It will be hard for 2019 party to beat 2018!

Submitted by: Pat Masters

VISION CORE

Vision Core Notes: begun January 3 - 6:30

Attending: Marya Wheeler, Chris Wheeler, Barbara McGill, Michael Tucker, Rev Janis Farmer

Virtual participants: Carol Nigut, Anna Mello-Lewis

What is the highest vision, the highest ideal, for Center for Spiritual Living Tucson?

Love, relationships, teaching 'Olivia', children's ministry; Raising the consciousness of Tucson and the planet, programming, relationships, leadership; Consciousness waterfall, water, mountain and place, Catalinas; Potato sauce, (what?) Aspect of a most basic element, potentiality, Becomes gourmet, elite, nuanced, savory as...; Pot of gold at the end of the rainbow, smiling faces, a bunch of beautiful horses running together across a plain; Organized, thriving.

Gleeful people with smiling faces holding hands and dancing in a circle. Free; not a care in the world!; Saw a ship by itself out in the ocean, no matter how big the waves got, the ship just flowed along and rode the waves peacefully.

Heard Karen Drucker Song: "Let go of the shore and let the water carry you, let go of the shore, float into the mystery."

What changes, evolves, becomes, (releases, moves aside, ...) as this vision comes into being?

I grow, members experience personal growth; Commitment to the concerns beyond one's self alone in word and deed, altruism shows up through action in intentional, meaningful, impactful ways; whirlpool, creosote, community deepens; Becomes a habit, a practice, living into future potentiality, letting go, past story, habit, allowing, trusting unknown; Forced links of a chain, artists painting plein air, heartbeat and breath; Unified heartfelt dynamic leadership; Saw a being in a white robe with arms spread out standing between historic pillars...bright light was radiating from behind the being. Feelings of acceptance, peace, love, welcoming coming from this being.

Is there anything else that wants to be known?

We will grow in fun, joy, love & togetherness/community; CSLT communicates its value and values clearly and consistently in the community, in various locations and ways; This is the place of us, and little birds; Practice, growth habits and behaviors, flexibilities, breathing to expand, exhale and inhale, <3; Italian fountain with water flowing, children singing, radiant light; "Be still and know". Trust God...; Saw a new coke can with the old commercial and song: "I'd like to teach the world to sing in perfect harmony..."

Submitted by: Rev. Janis

Center for Spiritual Living Tucson

Board Minutes & Reports

January 17, 2019

7 Finance/Stewardship Report

Dick Laird

Executive Summary:

December 2018 was a 5 Sunday month. We also had two special events which were attended by 35-40 persons each. Contributions returned to historical levels. With the continuing discounted rental rate at the Gregory, we finished the month well. For four of the five Sundays, attendance averaged 62.

The Board has agreed to sustain and hold the vision of increased attendance by individuals willing and able to participate (in all ways and on many levels), this allows us opportunities to expand our reach in Tucson as well as enhance our financial stability, giving us greater latitude in moving forward on making use of our property on 22nd Street and/or finding a new interim location.

	<u>Total Sunday Offerings & P+II</u>	<u>New Designated Monies</u>	<u>Total Income*</u>	<u>Total Expenses*</u>	<u>Net Income*</u>	<u>Per Weekly Attendee</u>	<u>Avg Weekly Attendance</u>
December	\$11,821	\$0	\$12,501	\$10,203	\$2,298	\$41.19	57
November	\$13,264	\$13,000	\$13,944	\$9,908	4,036	\$60.29	55
October	\$10,341	\$0	11,807	11,348	460	\$47.65	55
September	\$9,508	\$20	\$11,709	\$12,352	(643)	\$31.80	60

* Presently we have a stand-alone Facility Fund, Scholarship Fund, a Practitioner Fund and a Compassionate Heart fund. All are designated and are not considered as part of Total Income or Total Expenses.

<u>Cash Balances</u>	<u>December</u>	<u>November</u>	<u>October**</u>	<u>September*</u>
General Ops Checking	\$9,573	\$10,039	\$6,336	\$3,791
Educ. (Savings) Fund	\$4,432	\$4,318	\$4,513	\$6,659
(Operating) Savings	\$2,023	\$2,023	\$2,023	\$2,051
Practitioners' Savings	\$786	\$786	\$786	\$786
Designated Holdings (Music)	\$0	\$0	\$0	\$0
SubTotal	\$16,814	17,166	\$13,658	\$13,287
Opportunity Fund	12,000	12000		
Facility Fund Savings	21,287	21,287	\$20,287	\$20,286
Facility Fund Invest. Acct	0	0	\$0	\$0
Total	\$50,101	\$50,453	\$33,945	\$33,573

* For the first time in a very long time, we moved \$1,000 from Education to General Operations to cover bills.

** For the first time ever, we tapped our overdraft protection & moved \$3,000 from Education to GenOps to pay bills

☞ We received an anonymous designated gift, part of which is to be used for 'sustainable' marketing activities.

Comparison between December 2017 and December 2018:

Attendance/Sunday	DEcreased by	12
Offerings/Month	DEcreased by	\$3,179
Offering/person/Sunday	DEcreased by	\$1.59
Total Income	DEcreased by	\$3,730
Expenses	DEcreased by	\$2,988
Net Income	DEcreased by	\$742

Center for Spiritual Living Tucson

Board Minutes & Reports

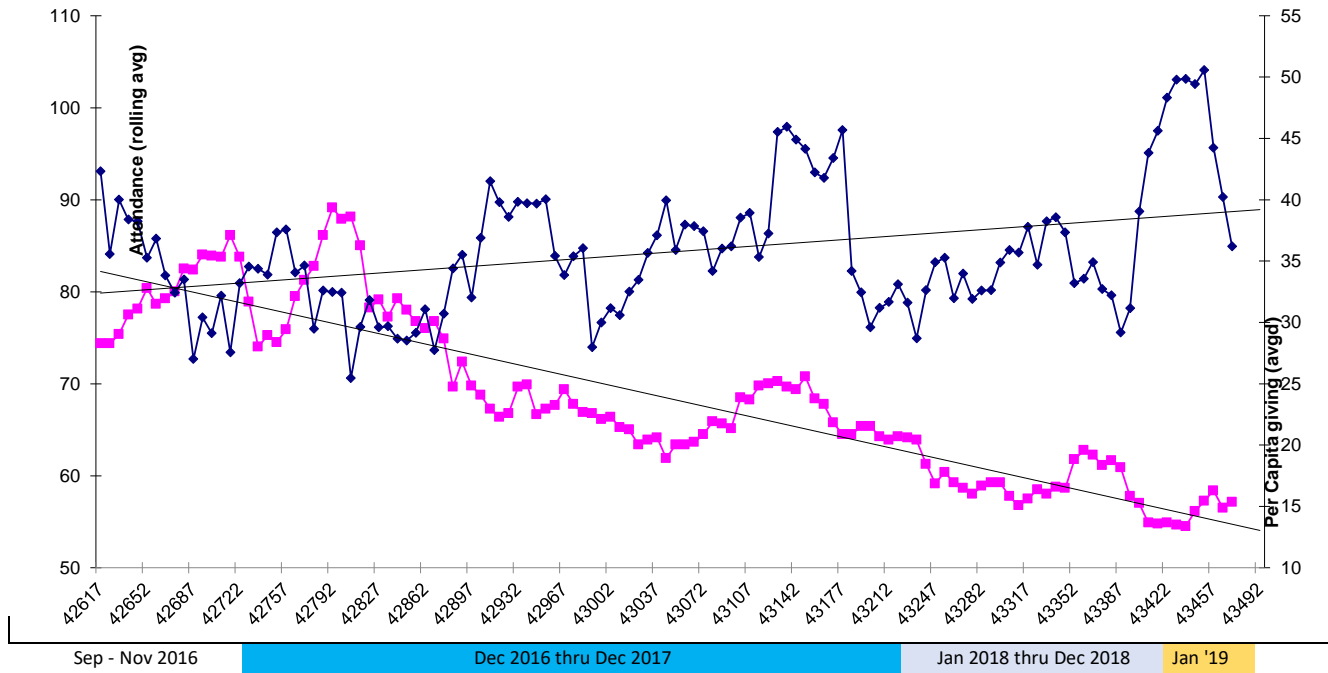
January 17, 2019

Status of the CSLT Facility Fund

Facility Fund Investment Acct Deposits: Initial Deposit \$50,000 (Nov12), Deposit \$10,236 (Mar13). Deposit \$15,188 (Dec13). Investment Account closed December 2016 to purchase raw land at 4961 E. 22nd St.

Date	CSLT Contributions	Various Projects & Interest	Personal Donations	\$ Total
Year End 2009				29,365
Year End 2010				48,710
Year End 2011				70,361
Year End 2012	6,800	1,045	1,430	79,636
Matching Fund Reserves			2,900	82,536
Year End 2013 (Inspection)	<1,800>	4,780	3,327	88,843
Year End 2014	<600>	1,789	25,884	115,936
Year End 2015 (Moved to River Rd)	<5,223>	<1,786>	7,109	116,027
Year End 2016 (Purchased land)	<102,024>	2,068	2,440	18,511
Year End 2017 (InvAcctClosed.)		164	1,500	20,175
January				20,175
February				20,175
March (Gourmets 4 God)		111		20,286
April				20,286
May				20,286
June				20,286
July				20,286
August				20,286
September				20,286
October		1		20,287
November			1,000	21,287
December 2018				21,287

Center for Spiritual Living Tucson
 Board Minutes & Reports
 January 17, 2019



Center for Spiritual Living Tucson

Board Minutes & Reports

January 17, 2019

Range Report for 4rd Quarter (with other quarters for comparison)

Donations/qrtr	4Qtr 2018		3Qtr 2018		2Qtr 2018	
	All	Extnd Ldrs	All	ExtndLdrs	All	Extnd Ldrs
>\$2,000	1	0	2	0	0	0
\$1,500-1,999	5	1	1	1	3	2
\$1,000-1,499	9	5	5	4	2	1
\$750-999	1	1	3	3	6	5
\$500-749	10	4	8	3	6	3
\$250-499	13	5	13	7	14	4
\$100-249	20	2	18	2	18	2
\$1-99	20	2	19	1	25	3
0 or UnID'd	?	2	?	2	?	2
Total Number	79+	22	69+	23	74+	22

For the 4rd quarter 2018, the 'bright line' (20% of the contributors paying 80% of the expenses) was \$500 and included 10 leaders out of 26 congregants. In the 3rd quarter, the 'bright line' was \$400 and included 15 leaders out of 24 congregants.

Budget and Actual Income Year to Date presented as a separate document

1Qtr 2018		4Qtr 2017	
All	Extnd Ldrs	All	Extnd Ldrs
2	0	3	1
2	2	3	1
4	3	4	3
1	1	4	2
7	3	6	2
18	5	16	7
21	2	13	2
26	1	36	0
?	5	?	4
81+	22	85+	22