



**Board of Trustees
Minutes
November 15, 2018**

		<u>Presenter</u>	<u>Duration</u>
1	Call to Order and Evocation	Mariann/Rev. Ja	5 Min
2	Visioning	Rev. Janis	10 Min
3	Checking In	All	
4	Knowing Love Exercise	Mariann	5 min
5	Last Month's Minutes	Pat	Done/0 Min
6	Call to Audience	Mariann	5 Min
	<i>This time provides an opportunity for audience members to bring topics to the board's attention for future agendas. Topics raised during Call to Audience will not be acted on at this meeting. Audience members are asked to keep their comments to no more than three minutes.</i>		
7	Finance/Stewardship Report	Rev Janis for Dick	
	Discussion of current fiscal status	All	30 min
8	Review Current Business Items		
		Page 1	
a	Facility Update	Dick	0 Min
b	Major Goal Check-In/Dashboard	All	5 Min
c	Next Steps for Consolidated Campus	Dick	2 Min
d	Volunteer Party Update	Pat	2 Min
e	Leadership of small groups	Mariann	5 min
9	New Business for This Meeting		
		Page 2	
	Conscious Centers Success Series	Janis	5 min
	Women For Sobriety	Janis	5 min
	Board Covenants for discussion	All	15 min
	The 2018-2019 Planning Cycle	All	5 min
	Board Meeting schedule/agenda	All	5 min
	Planning Meeting schedule/agenda	All	2 min
	Additional New Business for this meeting	Mariann	2 min
10	New Business for Next/Future Meeting	All	5 Min
11	Gratitudes	All	5 Min
		Page 3	
12	Next Board Meeting	All	0 Min
13	Review CIAB Schedule	All	5 Min
14	Lead Newsletter Articles	All	2 Min
15	Six Month Look Ahead on Calendar	All	5 Min
		Page 4-5	
16	Team Reports		
		Pages 6- 8	
17	Adjourn and Pray out		

Present: Mariann Moery, Sheila Campbell, Pat Masters, Janie Hooper, Rev Janis Farmer

Absent: Dick Laird (out of town)

In Service: Mariann Moery (Scribe), Rev Janis (High Watch)

Guests: Barbara McGill

Center for Spiritual Living Tucson

Board Minutes
November 15, 2018

- 1 **Call to Order/Evocation** 6:30 p.m.
2 **Visioning**

Q: What is the Highest Vision or Highest Ideal for Center for Spiritual Living Tucson?
the Power of 10 movie in the expanding phase; warm, fairly large crowd;; truth spreading like stars; Christmas "King; cake baked with gold coins inside; someone in a werewolf mask; love & laughter, clarity of knowing Truth, No Fear.

Q: What changes, evolves, or becomes as this highest vision comes into existence?
A zipper coming unzipped, stacking blocks; Adjusts as vision comes to pass; Big solid rock; Country road with large open gate--meadow on either side; shadows adjust as vision comes to pass like due to the sun moving across the sky; shadows of mountain changes as sun moves across the sky; circle is complete.

Q: Is there anything else that wants to be known, understood, or realized? What else?
Beautiful street with umbrellas overhead (Portugal); Everything is always possible; congregation holding hands in a circle singing in a large sanctuary; who is behind the mask; giving up loved limitations.

- 3 **Checking In** All
4 **Knowing Love Exercise** Mariann
Action: to be named later
5 **Approval of Last Month's Minutes** Done & posted in Newsletter
6 **Call to Audience** Mariann
7 **Finance/Stewardship Report** Dick
Executive Summary:

Separate Sheets for financial reports and Budget

8 **Review of Current Activities**

	Report, Decision & Action
a. Facility Update, office & 22nd St location	Minor issue with heating - resolved.

Major Goals initiated 1/7/2017 planning mtg with continuance approved at 12/12/2017 planning mtg. New Goals added at 2018 Intention Setting 2/2-3/2018.

b1. Education	See Education Report page 6 <i>Practical Metaphysics</i> with Keith Gorley has concluded. His next class will be in 2019.
b2. Financial Stability	Month of October was reviewed with following notes: At the 4th Sunday we had a 50% deficit which prompted discussion of moving from Gregory & other expense cutting. By the end of the month revenue was received through special gifts, increased and new auto contributions. Month ended with \$460 balance. A few bank charges were incurred. As an accrual based budget we need to begin accruing Educational dollars so receipts and facilitator payments will balance within a period. The 2019 Budget was reviewed. Contribution dollars were decreased to 2018 actuals, Admin help, Video, Acknowledgement Banquet & Speaker Fees retained for now. Resulting in a few negative months, but ending the year in the black.

Center for Spiritual Living Tucson

Board Minutes
November 15, 2016

b3. Growth	NewComer's Team - see report page 7 Community Builder's Team Report Page 6 Item added to next planning meeting agenda: 12/6/18
b4. Possible construction Techniques	Nothing new to report

b5.	Administrative Support for Rev. Janis	Based on the submitted 2019 Budget, it will be extremely difficult to support paid administrative help. Volunteers are needed with regular scheduled appearances. Creativity is called for! To facilitate discussion Rev. Janis has circulated job descriptions that would support her. Gayle is returning for Bulletins and Maria has offered to come in. Helpful tasks are on Rev Janis emails.
b6.	Board Liaisons & Team Reports	<u>Points of community connection</u> As Board members we are charged with being not only liaison to Teams but to facilitate and develop relationships to, with and among team members. giving them partnership not only on the team but with the community. 2018-19 Board Liaison responsibilities: Rev. J. Sunday: Practitioner Core, Education, Admin, Ops Mariann: Chair, Trustees, Marcom, Outreach, Video, Photography Sheila: Vice-Chair, eBay Store, Newcomers, Bookstore Pat: Secretary, Membership, Volunteer Appreciation Party, Cinema, Ordination Ceremony, Hosts Dick: Treasurer, Funding/Stewardship, Hospitality, Facilities Janie: Compassionate Heart, Ushers, Altared States, Gratitude Banquet Marya: Youth To be reviewed when Marya sits with the Board in January 2019.
b7	Space Needs: Current & Future Utilization	Do we know now - what we will be needing, assuming growth Agenda item for Planning 12/6/18
b8	Small Groups - including Mediation	POWER OF 8 book study groups are the next project. The first POWER group has contacted Rev. Janis. The men's group meets 1st & 3rd Thursdays for breakfast, with 6-8 in attendance. Catalina Artist Group meets 1st Mondays. 5-7 attend Leah's Friday morning meditation at the office is on hiatus.
b9	Expand reach of education classes.	Rev. Janis, in response to the Survey & Community Visioning, is considering varied and various class schedules & locations. This Foundation class voted to meet earlier 5:30 - 8:30

Center for Spiritual Living Tucson

Board Minutes

November 15, 2016

8c	Next steps for Consolidated Community Campus: Property/visits/Discussion	3131 N. Country Club – questions were raised about the actual space available. The Board to discuss further. Item added to Planning agenda for 12/6.
8d	Volunteer Party Review	The Volunteer Recognition and Appreciation Party celebrating our 71(!) amazing volunteers was held at Pat Masters' house on October 27 th , 3-7pm, and enjoyed by 33 volunteers and 4 guests. Photos were taken primarily by Bill Spurgeon and published in the newsletter on November 7 th . The CSLT Orchestra entertained magnificently and were joined by our beautiful and talented volunteer singers Leona Freeman, Abbie Small and Joni Olson. The yummy vegan meal was catered by Thompson's Tasteful Kitchen and the board members provided desserts and non-alcoholic beverages. Jeff Poulin, Renee' Mezzone and Tom Bacon provided shuttle service from our remote parking area to Pat's house.
8e	Small Groups	For distribution and later discussion: a list of requirements to create a small group affiliated with CSLT. After brief discussion it was suggested there be two areas: spiritual & extra-curricular: hiking, crafts, etc. Different requirements for each. For December Board meeting
9	New Business for this meeting	
	Conscious Center Success Series	Board Training via Membership Council - Board is interested and awaits more information regarding cost, schedule, etc.

Women for Sobriety	Request to "rent" space for group new to Tucson (for free). Board supports the concept of the group and approved opening discussion with the group for potential use of our space.
Board Covenants	After discussion of consensus-building model, further discussion was moved to later meetings.
2018-2019 Planning Cycle	
	November 23rd: Caravan el Noor at Unity Peace
	December - Solicit charities for presentations and selection None yet received.
	Solstice /Candlelighting 12/21 7-8 Sheila will open/close
	Endings & Beginnings 12/31 7-8 Mariann will open/close
Board Meeting Schedule and Agenda	December Board meeting will be on Thursday 12/13/18 at 6:30
Planning Meeting Schedule and Agenda	Next Planning meeting 12/6/18 at 6:45: physical space needs which will best serve our community and to support growth plans
Additional New Business for this meeting	None

Center for Spiritual Living Tucson

Board Minutes

November 15, 2016

10 New Business Items for Next Meeting

11 Gratitudes

Date	Honoree
11/18	Bookstore
11/25	Thanksgiving & Gratitudes
12/2	Birthdays/Anniversaries
12/9	Altared States
12/16	All Spiritual Leaders
12/23	Solstice - Light returns

12 Review CIAB schedule

11/18	Jane/Mariann
11/25	Jane/Sheila
12/2	Jane/Sheila
12/9	Dick/Mariann
12/16	Dick/Mariann
12/21	Solstice/Candlelighting Sheila at 6
12/23	Pat/Sheila
12/31	Endings/Beginnings Mariann at 6

13 Lead Newsletter Articles

Due	Who is writing
11/18	Dick
11/25	Janie
12/2	Mariann
12/9	Rev. Janis
12/16	Sheila
12/23	Pat
12/30	Dick

Rotation: Rev J-->Sheila-->Pat-->Dick-->Janie-->Mariann

14 Six Month Calendar Review Starts page 4

Team Reports: Addendum: submitted before Board mtg.

15 To Mariann: 7-10 days prior to meeting

Questions to be brought to meeting. **Start page 6**

16 Adjourn and Pray Out

Center for Spiritual Living Tucson

Board Minutes & Reports

October 18, 2018

7 Finance/Stewardship Report

Rev Janis for Dick Laird

Executive Summary:

October 2018 was a 4 Sunday month. Until the 4th Sunday, we were running quite a deficit for the month. Typically, by the 4th Sunday (including automatic giving) we have received contributions in excess of \$7,200. After the automatic giving contributions were considered in October our contribution income equalled \$5,033. We have been holding our expenses down, and were looking at a substantial shortfall. For the first time ever, we moved \$3,000 to cover outstanding payables, and Rev Janis made a request of the attendees to decide the value of CSLT to them. Several individuals set up automatic giving schedules and others increased their giving. To these individuals, and to all who recognized the value CSLT adds to their lives, and to the lives of all, we are infinitely grateful.

The Board has agreed to sustain and hold the vision of increased attendance by individuals willing and able to participate (in all ways and on many levels), this allows us opportunities to expand our reach in Tucson as well as enhance our financial stability, giving us greater latitude in moving forward on making use of our property on 22nd Street and/or finding a new interim location.

	Total Sunday Offerings & P+II	New Designated Monies	Total Income*	Total Expenses*	Net Income*	Per Weekly Attendee	Avg Weekly Attendance
October	\$10,341	\$0	11,807	11,348	460	\$47.65	55
September	\$9,508	\$20	\$11,709	\$12,352	(643)	\$31.80	60
August	\$9,197	\$54	\$10,283	\$12,545	(2,262)	\$35.93	64
July	\$11,762	\$0	\$13,066	\$11,249	1,817	\$42.01	56

* Presently we have a stand-alone Facility Fund, Scholarship Fund, a Practitioner Fund and a Compassionate Heart fund. All are designated and are not considered as part of Total Income or Total Expenses. A Compassionate Heart gift was made during August.

Cash Balances	October**	September*	August	July
General Ops Checking	\$6,336	\$3,791	\$3,127	\$5,745
Educ. (Savings) Fund	\$4,513	\$6,659	\$7,000	\$6,483
(Operating) Savings	\$2,023	\$2,051	\$2,051	\$2,051
Practitioners' Savings	\$786	\$786	\$766	\$766
Designated Holdings (Music)	\$0	\$0	\$0	\$0
SubTotal	\$13,658	\$13,287	\$12,944	\$15,045
Facility Fund Savings	\$20,287	\$20,286	\$20,286	\$20,286
Facility Fund Invest. Acct	\$0	\$0	\$0	\$0
Total	\$33,945	\$33,573	\$33,230	\$35,331

* For the first time in a very long time, we moved \$1,000 from Education to General Operations to cover bills.

** For the first time ever, we tapped our overdraft protection & moved \$3,000 from Education to GenOps to pay bills

Comparison between October 2017 and October 2018:

Attendance/Sunday	DEcreased by	9
Offerings/Month	DEcreased by	\$2,860
Offering/person/Sunday	INcreased by	\$6.40
Total Income	DEcreased by	\$3,117
Expenses	DEcreased by	\$2,164
Net Income	DEcreased by	\$951 (Both years positive, 2018 less so)

Status of the CSLT Facility Fund

Facility Fund Investment Acct Deposits: Initial Deposit \$50,000 (Nov12), Deposit \$10,236 (Mar13), Deposit \$15,188 (Dec13). Investment Account closed December 2016 to purchase raw land at 4961 E. 22nd St.

Date	CSLT Contributions	Various Projects & Interest	Personal Donations	\$ Total
Year End 2009				29,365
Year End 2010				48,710
Year End 2011				70,361
Year End 2012	6,800	1,045	1,430	79,636
Matching Fund Reserves			2,900	82,536
Year End 2013 (Inspection)	<1,800>	4,780	3,327	88,843
Year End 2014	<600>	1,789	25,884	115,936
Year End 2015 (Moved to River Rd)	<5,223>	<1,786>	7,109	116,027
Year End 2016 (Purchased land)	<102,024>	2,068	2,440	18,511
Year End 2017 (InvAcctClosed.)		164	1,500	20,175
January				20,175
February				20,175
March (Gourmets 4 God)		111		20,286
April				20,286
May				20,286
June				20,286
July				20,286
August				20,286
September				20,286
October 2018				20,287

Center for Spiritual Living Tucson

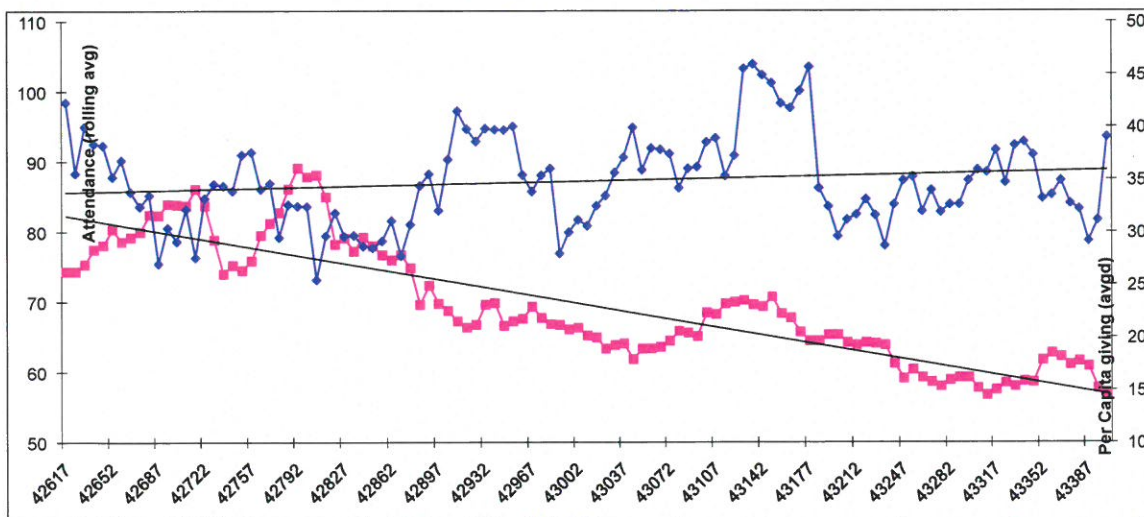
Board Minutes & Reports

October 18, 2018

Budget and Actual Income for Month

	October 2018		Total year-to-Date	
	Actual	Budget	Actual	Budget
Income				
40100 Contributions				
40101 Sunday Offerings	7,687	8,500	77,067	93,250
40110 Online Contri	2,654	2,500	23,309	25,000
40120 Other Donations		800	0	4,400
Total 40100 Contributions	10,341	11,800	100,376	122,650
41500 Misc. Income	23		97	0
43101 Facility Rental Income	53	115	456	1,150
44010 Fundraising			0	0
44020 Fundraiser Income			1,160	0
Total 44010 Fundraising	0	0	1,160	0
45010 Interest / Dividend Income	0		2	0
49990 Unidentified Income			0	0
Uncategorized Income	28		28	0
Total Income				
Gross Profit	10,446	11,915	102,119	123,800
	10,446	11,915	102,119	123,800
Expenses				
Total 00 ADMINISTRATION	5,299	6,405	55,157	66,660
Total 02 MINISTER COMPENSATION	1,725	1,725	17,335	18,578
Total 03 MUSIC EXPENSE	1,850	1,952	18,789	19,733
Total 04 MINISTRY EXPENSE	800	40	1,349	1,400
Total 05 SUNDAY SERVICE EXP	350	420	2,781	3,450
Total 06 TITHING / CHARITABLE GIVING	1,034	1,180	10,011	12,265
Total 07 LEADERSHIP DEVELOPMENT EXP	0	1,050	1,735	4,550
Net Operating Income	-613	-857	-5,038	-2,836
Other Income				
Total 81100 EDUCATION TUITION	838	1,370	6,587	13,700
Total 81200 EDUCATION EXPENSES	0	-950	-3,930	-9,500
Total 81000 EDUCATION REV	838	420	2,656	4,200
Total 83000 SPECIAL EVENT REVENUE	0	0	311	0
Total 84010 FLOWER FUND REVENUE	0	0	0	0
Total 84110 NewComers Rev	0	0	-413	0
Total 84200 SPIRITUAL CINEMA REVENUE	36	17	251	170
Total 84700 Practitioner Fund (MOP)	0	0	75	0
Total 85000 Bookstore Revenue	198	100	528	1,000
Total Other Income	1,073	537	3,409	5,370
Net Other Income	1,073	537	3,409	5,370
Net Income	460	-320	-1,629	2,534

Chart begins 9/4/2016 thrn monthly through 10/14/2018



Center for Spiritual Living Tucson

	Sunday	Monday	Tuesday	Wednesday	Thursday	Friday	Saturday
	11	12	13 Foundations (9)	14 Gratitude Becomes Us (2)	15 Men's Gp. 9am Board Mtg 6:30p Power of Eight Gp 6:30p	16 Meditation on hiatus.	17
	18 Lunch Bunch	19	20 no class	21 Gratitude Becomes Us (3) (aka Thanksgiving Eve Service)	22 Thanksgiving Day	23 Meditation on hiatus Caravan el Noor 7-9 at Unity of Peace	24
	25 Cinema: Our Souls at Night, 1:30pm	26	27 Foundations (10)	28 Gratitude Becomes Us (4)	29 Power of Eight Gp 6:30p	30	DEC 1

	Sunday	Monday	Tuesday	Wednesday	Thursday	Friday	Saturday
December (Charities speak)	2 Potluck Sunday	3 Catalina Emerg'g Artists, offsite 6pm	4 Foundations (11)	5 Gratitude Becomes Us (5)	6 Men's Group 9a Vision Core 6:30p Bd Planning 6:45 Power of Eight Gp 6:30p	7	8
	9	10	11 Foundations (12)	12 Gratitude Becomes Us (6)	13 Board Meeting 6:30p Power of Eight Gp 6:30p	14	15
	16 Lunch Bunch	17	18 Foundations (13)	19 Taize for the holidays...	20 Power of Eight Gp 6:30p	21 Candlelighting 7p	22 Winter Labyrinth Walk, 7pm
	23 Cinema?	24	25	26	27	28	29
	30	31 Endings & Beginnings 7pm	JAN 1 2019	2	3 Men's Group 9a Vision Core 6:30p Power of Eight Gp 6:30p	4	5

	Sunday	Monday	Tuesday	Wednesday	Thursday	Friday	Saturday
Jan-19	6 Potluck Sunday Voting on 2019 Charity (must be present to vote)	7	8	9	10 Power of Eight Gp 6:30p	11	12
	13 Membership Class #1	14	15	16	17 Men's Grp 9a Board Meeting 6:30p Power of Eight Gp 6:30p	18	19
	20 Lunch Bunch Membership Class #2	21	22	23	24	25	26

27 Cinema	28	29	30	31	Feb 1 2019	2
-----------	----	----	----	----	------------	---

Center for Spiritual Living Tucson

Feb-19						
3 Potluck Sunday	4 Catalina Emerging Artists, offsite 6pm	5	6	7 Men's Group 9 Vision Core 6:30	8	9
10	11	12	13	14 ReAffirmation of Vows	15	16
17 Lunch Bunch	18 19 Rev J ordination party	20	21 Men's Group 9 Board Meeting 6:30	22	23	24 Cinema
	25	26	27	28	1-Mar	2

March 2019						
3 Potluck Sunday	4 Catalina Emerging Artists, offsite 6pm	5	6	7 Men's Group 9 Vision Core 6:30pm	8	9
10	11	12	13	14	15	16
17 Lunch Bunch	18	19	20	21 Men's Group 9 Board Meeting 6:30	22	23
24 Cinema	25	26	27	28	29	30

Apr-19						
31	1 Apr Catalina Emerging Artists, offsite 6pm	2	3	4 Men's Group 9 Vision Core 6:30pm	5	6
7 Potluck Sunday	8	9	10	11	12	13
14	15	16	17	18 Men's Group 9 Board Meeting 6:30	19	20
21 Lunch Bunch	22	23	24	25	26	27
28 Cinema	29	30	May 1	2	3	4

Addenda: Team Reports

ADMINISTRATION

Normal operations continue. List of office administrative and office manager duties have been shared with the board.

Submitted by: Rev. Janis

ALTARED STATES

Need 1-2 extra members, especially to cover 5th Sundays per Barbara Arissa. Pat Masters to re-join the team.

Submitted by: Janie Hooper

BOOKSTORE

Bookstore. The Bookstore was available on three Sundays at the Sunday Celebration Services. Total Sales for the month = \$423.95, aided, in part, by the community wide book study on Lynne Twists' *Soul of Money*.

Submitted by Wendie Arison

COMMUNITY BUILDERS OUTREACH

This activity will be incorporated into the meeting with the Gregory School and our 12/6 planning.

Submitted by: Mariann Moery

COMPASSIONATE HEART

Month totals: 8 calls; 5 emails; 3 rides; 3 errands; 9 hours Sister Jose's

Submitted by: Wendie Arison

E-BAY STORE

On hiatus until a manager is in place.

Submitted by: Mariann Moery

ECCLESIASTICAL CORE

Immense gratitude for our practitioners. Meeting each month with them. One has taken a leave of absence to address some family issues. We have appreciated other members of our congregation stepping up to facilitate the Sunday morning meditation. We begin to make adjustments in how we 'do' Sunday Service to encourage a sense of community.

EDUCATION CORE

Pat Masters offered *The Best of Prosperity Plus II* to 7 people while Rev Janis was in Dallas becoming formally ordained. *Practical Metaphysics* continued with Keith Gorley on Thursdays at 4pm with 6-8 in regular attendance. The Journey continued with Rev Janis completing a 4-week series on Lynne Twist's *The Soul of Money* with 10-15 attending.

Foundations of the Science of Mind continues with 6 attending, 3 are new students and 3 are auditing.

Submitted by: Rev. Janis

EVENTS

Upcoming events include two musicians in early 2019 and the Caravan el Noor on November 23rd.

Submitted by: Mariann Moery

FACILITIES TEAM

No new searches this month.

Submitted by: Dick Laird

FUNDING TEAM

Team met as part of budget review/reforecast

Submitted by: Dick Laird

HOSPITALITY TEAM

Thanks to all that helped on this past Sunday, we had many returning hands.

I am looking for 3 volunteers for December 2nd. I will not be there.

Submitted by: Dick Laird

HOST TEAM

Submitted by Pat Masters

MARKETING AND COMMUNICATIONS TEAM

We will be meeting with the marketing group at Gregory School. They have generously offered to share their successful marketing actions.

Submitted by: Mariann Moery

MEMBERSHIP

Next Membership class scheduled for the second and third Sundays of January following Sunday Celebration Services

Submitted by: Pat Masters

MINISTER'S TRAVEL PLANS

The fill-in Sunday Speaker was well received while Rev Janis was in Dallas becoming ordained. No travels, beyond the ministers' lunch in Phoenix, until the December holidays when the office is closed.

Submitted by: Rev. Janis

MUSIC/SOUND

We remain blessed to have out volunteer singers, supported by our CSLT Orchestra providing such uplifting music.

Our next paid Sunday Morning musicians will be Cerise Patron on January 20, 2019 and Rafe Pearlman on February 3, 2019. We have spent our guest musician budget for 2018. We greatly appreciate our music team.

Submitted by: Rev. Janis

NEWCOMERS TEAM

NewComers Team welcomed **9 guests** who agreed to sign the guest book in October. Six found us on the internet, 2 from other CSLs, and one didn't say how they found us.

Submitted by: Rev. Janis

PRACTITIONER CORE

Leah discontinued her Friday morning meditation, and will resume when she is able.

Submitted by: Rev. Janis

ORDINATION CELEBRATION

Will be held in February.

Submitted by: Pat Masters

SACRED CINEMA

Continues monthly with Tom Bacon facilitating.

Submitted by: Pat Masters

SMALL GROUPS

Plans are being discussed for an organized multi-group book study of POWER OF 8. Requirements for small group leadership and content certification are being defined.

Submitted by: Mariann Moery

USHERS

Plenty of ushers and running smoothly per Donna Hall.

Submitted by: Janie Hooper

VIDEO & PHOTOGRAPHY

Photography will continue to be provided by volunteers. Video is on hold pending budget and space issue resolutions.

Submitted by: Mariann Moery

VOLUNTEER APPRECIATION

Reported as Current Activity.

Submitted by: Pat Masters

Page 7

Center for Spiritual Living Tucson

Board Minutes

November 15, 2018

VISION CORE

Vision Core Notes, Begun Nov 1, 6:30pm

In Attendance: Barbara McGill, Rev. Janis Farmer

Virtual Participants: Carol Nigut, Anna Mello-Lewis

What is the highest vision, the highest ideal, for Center for Spiritual Living Tucson?

Saw a dove with a purple ribbon in it's mouth flying over different areas/people. The ribbon had light energy coming from it and it gently & slowly dropped down upon those under it. Heard the song: Get Together."Come on people now, smile on your brothers, everybody get together, try and love one another right now."; A soft effulgent light, a shadowless light within, behind my eyelids, rising & falling, fully present from a source, nourishing; Big family drum (like a tympani) being played by a bunch of people with big mallets, movement, music, dance, engagement, fire & light; Community, image of a star streaking across the sky, image of circle of people holding hands in unity and love, Courage.

What changes, evolves, becomes, (releases, moves aside, ...) as this vision comes into being?

Recognizing ourselves in each other. Hold up the mirror and understand that there is no-thing outside of ourselves. We take responsibility for our creations and love ourselves and each other through any misunderstandings and errors in thinking. We celebrate increased awareness! Yahooo!!; Release & let go, a quickening realization, nowness, knowingness of allness, accepting (this?) _____, attunement to the flow; Water in a pail, horses in harness, a compass, radio waves; Commitment, Strength of voice, image of a rainbow.

Is there anything else that wants to be known?

Saw a sky writing airplane with the message "Freedom is Yours". Also saw a child from olden days playing the stick and hoop rolling game.; Let past facades break, allow emergence in (k)now, seeing what shows up with new eyes, practice of all celebration; Chocolate cake & ice cream, a book on a picnic table with the pages fluttering in the wind, the aluminum 'palapa' at Picacho Peak; Now is the time to step up. Be still and KNOW.

And another cool thing. When Mike Stammen came through the hug line he said that he got a vision when he was cutting the hole in the top of the suggestion box. The vision was everyone standing together in the center holding hands. :-)

Submitted by: Rev. Janis