



**Board of Trustees
Minutes and Board Reports
April 19, 2018**

Item	Presenter	Duration
1. CALL TO ORDER AND EVOCATION	LEAH HAMILTON/REV JANIS FARMER	5 MIN
2. VISIONING	REV JANIS	15 MIN
3. CHECKING IN	ALL	10 MIN
4. KNOWING LOVE EXERCISE	RENEE' MEZZONE	5 MIN
5. LAST MONTH'S MINUTES	ALREADY ELECTRONICALLY APPROVED & POSTED	0 MIN
6. CALL TO AUDIENCE	LEAH	1 MIN
<i>This time provides an opportunity for audience members to bring topics to the board's attention for future agendas. Topics raised during Call to Audience will not be acted on at this meeting. Audience members are asked to keep their comments to no more than three minutes.</i>		
7. FINANCE/STEWARDSHIP REPORT	RENEE', TREASURER	15 MIN
8. REVIEW OLD BUSINESS ITEMS		
a. FACILITY UPDATE	DICK LAIRD	2 MIN
b. MAJOR GOAL CHECK-IN/DASHBOARD	ALL	5 MIN
c. NEXT STEPS FOR CONSOLIDATED CAMPUS?	DICK	2 MIN
d. GOURMETS FOR GOD	REV JANIS	0 MIN
e. SOM MAGAZINE SUBSCRIBERS	MARIANN MOERY	2 MIN
f. EBAY FUNDRAISER STATUS	SHEILA CAMPBELL	5 MIN
g. STATUS OF SPRING PET BLESSING	PAT MASTERS & RENEE'	2 MIN
h. PIANO IN GREEN VALLEY	REV JANIS	2 MIN
9. REVIEW TEAM REPORTS		
10. NEW BUSINESS FOR THIS MEETING	ALL	
A. THE 2017-2018 PLANNING CYCLE	ALL	5 MIN
B. PLANNING MEETING AGENDA (BOOK STUDY)	ALL	0 MIN
C. REVIEW POLICY FOR TEACHING NON-CERTIFICATED CLASSES	ALL	5 MIN
D. ADDITIONAL NEW BUSINESS FOR THIS MEETING?	ALL	5 MIN
 <u>IN PARKING LOT/DEFERRED/TABLED:</u>		
IDENTIFYING QUALIFIED PROSPECTIVE BOARD MEMBERS, SCHEDULED FOR MAY PLANNING MEETING		
CLASS ON CONSENSUS DECISION MAKING	TBD	
CONGREGATIONAL ELECTRONIC SURVEY, TO BE CONSTRUCTED OVER THE SUMMER AND LAUNCHED IN THE FALL.		
11. NEW BUSINESS FOR NEXT/FUTURE MEETING	ALL	5 MIN
12. SIX MONTH LOOK AHEAD ON CALENDAR	ALL	5 MIN
13. GRATITUDES	ALL	5 MIN
14. NEXT BOARD MEETING	ALL	0 MIN
15. BOARD SOCIAL/PLANNING MEETING	ALL	0 MIN
16. REVIEW CIAB SCHEDULE	ALL	5 MIN
17. LEAD NEWSLETTER ARTICLES	ALL	<u>2 MIN</u>
18. ADJOURN AND PRAY OUT		

IN ATTENDANCE: REV JANIS FARMER, PAT MASTERS, LEAH HAMILTON, RENEE MEZZONE, SHEILA CAMPBELL, MARIANN MOERY
ABSENT: DICK LAIRD

Center for Spiritual Living Tucson

Board Minutes and Board Reports

April 19, 2018

IN SERVICE: REV. JANIS, PRACTITIONER, PAT MASTERS, SCRIBE.

GUESTS: BARBARA MCGILL

1. CALL TO ORDER/EVOCATION RE. JANIS

6:30 PM

2. VISIONING

Q: What is the Highest Vision or Highest Ideal for Center for Spiritual Living Tucson?

A: Hay mow of a barn; open spaces around barn; serenity, expanse. Calm, still water. Tall grasses waving; blue sky, clouds floating. Free flow of energy. Seaweed waving under water; flight/airplane cockpit. Fun!

Q: What changes, evolves, or becomes as this highest vision comes into existence?

A Limited thinking and beliefs not welcome here; we need room to GROW, to THRIVE. A Kerplop (splash) or fire, then ripples fading into stillness. Relaxed ease of being. Cobblestone road going off into distance; sun shines brightly; spiral movement. Elephants, dolphins, grey skin.

Q: Is there anything else that wants to be known, understood, or realized? What else?

A: Song by Johnny Nash "I Can See Clearly Now...." Anything; smell of sweet grass; wildflowers in a meadow. Large animals (elephants and giraffes) walking in a grassland; river running. Beauty and laughter. Carousel. We are a team of incredible humans.

3. CHECKING IN

ALL

4. KNOWING LOVE EXERCISE

RENEE'

Action: _____ volunteers for the Knowing Love Exercise for the May meeting.

5. APPROVAL OF LAST MONTH'S MINUTES (ELECTRONICALLY APPROVED ALREADY)

--

6. CALL TO AUDIENCE

LEAH

7. FINANCE/STEWARDSHIP REPORT

RENEE'

Executive Summary: March contributions were down even more. We used the monies from the eBay store to assist in covering our expenses for the month. All bills were paid.

The Board has agreed to sustain and hold the vision of \$3,000 or more in each week's contributions, this allows us financial stability, and give us greater latitude in moving forward on making use of our property on 22nd Street.

	Total Sunday Offerings & P+II	New Designated Monies	Total Income*	Total Expenses*	Net Income*	Per Weekly Attendee	Avg Wkly Attendance
March	\$ 8,310	110	10,433	11,219	< 786>	33.11	63
February	\$ 10,025	0	10,874	11,251	< 376>	37.83	66
January	\$ 13,247	40	15,274	11,729	3,545	46.98	71
December	\$ 15,000	0	16,231	13,079	3,152	42.36	69

* Presently we have a stand-alone Facility Fund, a Music (choir) fund, a NewComers' Team fund (depleted in January with the purchase of new guest bags) and a Compassionate Heart fund. All are designated and are not considered as part of Total Income or Total Expenses.

Cash Balances	March	February	January	December
General Ops Checking	\$ 7,188	9,656	10,870	5,840
Educ. (Savings) Fund	\$ 5,420	5,310	4,861	3,813
(Operating) Savings	\$ 2,051	2,051	2,051	2,051

Center for Spiritual Living Tucson

Board Minutes and Board Reports

April 19, 2018

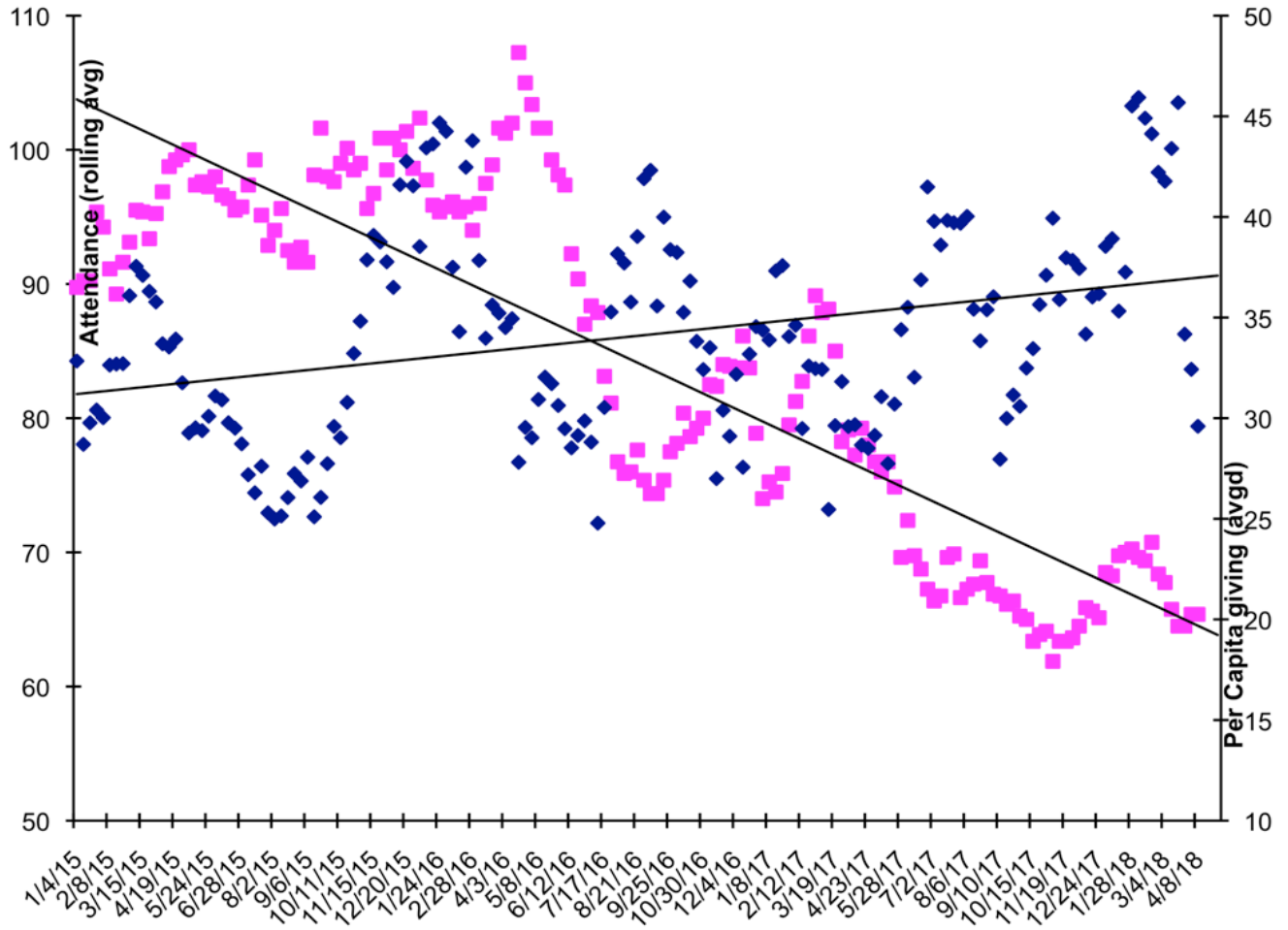
Practitioners' Savings	\$ 766	751	751	711
Designated Holdings (Music)	\$ 0	0	0	0
SubTotal	\$ 15,425	17,768	18,533	12,415
Facility Fund Savings	\$ 20,286	20,175	20,175	20,175
Facility Fund Invest. Acct	\$ 0	0	0	0
Total	\$ 35,711	37,943	38,708	32,590

Comparison between March 2017 and March 2018:

Attendance/Sunday	D Decreased by	12
Offerings/Month	D Decreased by	\$ 1,656
Offering/person/Sunday	D Decreased by	\$ 0.33
Total Income	D Decreased by	\$ 1,557
Expenses	D Decreased by	\$ 1,175
Net Income	D Decreased by	\$ 382 (2018 was more negative)

In March 2017 we had Phyllis Grimes' memorial service (no cost to us, the family covered the extra rental expense of the school), income and expenses for Victoria Castle (a good event, though not economically sound), and the final designated expenditures of the Music Team for last year's PosiFest expenses.

Quarterly Budget Review presented separately



Center for Spiritual Living Tucson
Board Minutes and Board Reports
April 19, 2018

Quarterly Range Report

Donations/ qrtr	1Qtr 2018		4Qtr 2017		3Qtr2017		2Qtr2017		1Qtr2017	
	All	Ext Ldrs	All	Ext Ldrs	All	ExtLdrs	All	ExtLdrs	All	Ext Ldrs
>\$2,000	2	0	3	1	2	0	1	1	1	1
\$1,500-1,999	2	2	3	1	2	1	1	0	1	1
\$1,000-1,499	4	3	4	3	3	2	8	6	6	4
\$750-999	1	1	4	2	2	2	3	3	6	2
\$500-749	7	3	6	2	13	7	7	3	8	5
\$250-499	18	5	16	7	9	2	19	2	16	2
\$100-249	21	2	13	2	14	3	14	3	15	3
\$1-99	26	1	36	0	24	2	20	2	28	3
0 or UnID'd	?	5	?	4	?	4	?	4	?	4
Total Number	81+	22	85+	22	68+	24	73+	25	81+	25

In the first quarter of 2018 the 'bright line' of the 20% of the contributions covered 80% of the bills was at \$375 for the quarter. This included 24 congregants and 12 of the extended leadership. In the fourth quarter of 2017 that number was \$405.

Status of the CSLT Facility Fund

Facility Fund Investment Acct Deposits: Initial Deposit \$50,000 (Nov12), Deposit \$10,236 (Mar13). Deposit \$15,188 (Dec13). Investment Account closed December 2016 to purchase raw land at 4961 E. 22nd St.

Date	CSLT Contributions	Various Projects & Interest	Personal Donations	\$ Total
Year End 2009				29,365
Year End 2010				48,710
Year End 2011				70,361
Year End 2012	6,800	1,045	1,430	79,636
Matching Fund Reserves			2,900	
Year End 2013 (Inspection)	<1,800>	4,780	3,327	88,843
Year End 2014	<600>	1,789	25,884	115,936
Year End 2015 (Moved to R.Rd)	<5,223>	<1,786>	7,109	116,027
Year End 2016 (Purchased land)	<102,024>	2,068	2,440	18,511
Year End 2017 (InvAcctClosed.)		164	1,500	20,175
January				20,175
February				20,175
March 2018 (Gourmets 4 God)		111		20,286

Discussion continues around economics of hiring an office administrator. Until CSL Tucson can sustain \$12,000/month we do not have funds available to have paid office staff. Volunteers continue to assist with office tasks, the remaining duties are not terribly time consuming.

Submitted, Renee' Mezzone

Center for Spiritual Living Tucson
Board Minutes and Board Reports
April 19, 2018

8. REVIEW OF OLD BUSINESS

	Report. Decision & Action
a. Facility Update	River Rd Office – The lease on the office will be changing as the daughter of the property owner will be taking over as owner/landlord. Has not happened yet.
Major Goals (initiated @ January 7, 2017 planning mtg, continuance approved @ Dec 12, 2017 planning mtg, New Goals added at 2018 Intention Setting February 2-3, 2018.	
b1. Education	See Education Report, p.6
b2. Financial Stability	Additional Comments? Nothing additional.
b3. Growth	NewComer's Team -. (See NewComers Team report, p.8) Community Builders Team – (See MarComm report, p.7)
b4. Gathering information on Construction Techniques	(Dick is the focal point) Rev. Janis contacted the Lutheran Church on Kenny Road to inquire about their construction cost of steel building. It came in over \$1 million.
b5. Growth of small groups, including meditation Group	Is there something more we could be, or 'should' be doing? Pat and Leah will explore offering a Peace Meditation Group
b6. Expand reach of education/classes	Rev Janis put an insert in the bulletin to determine level of interest in Certificated Classes through the summer months. Rev. Janis will facilitate <i>How to Change Your Life</i> by Ernest Holmes, June 6 – July 4, 6:30-8:30. Keith Gorley will offer a book study <i>Practical Metaphysics</i> by Eric Butterworth, June 9 – August 11, 10 – 11:30 a.m.
c. Next Steps for Consolidated Community Campus Property Visits/Discussion	<u>Open Land: 4961 E 22nd Street</u> – <i>Strip next to Medical Complex, 5th St and Craycroft</i> - Barbara McGill will send floor plan to Board Members. Larson/Baker, owners may be open to lease property.
d. Gourmets for God Status	Monies have been allocated to the appropriate accounts. This item is now complete.
e. What shall we do with the SOM magazine subscribers list?	(Mariann) E-mail subscribers list has been culled of non-openers. Next step to compare the two lists and determine who might be our potential invitees. This activity is planned to begin on April 17. The Community Outreach team, with Board approval, will send a letter telling them who we are and where we are located.
f. eBay fundraiser	Our eBay store has brought in \$1039.97 (in January and February) Sheila will contact Judy to determine if she would be willing to accept and sell smaller items. One proposal includes designating the funds, rather than have them be used for general operations.
g. Status of Spring Pet Blessing	First Annual Pet Blessing was lovely and reasonably well attended for the first one. Ecclesiastical team conducted the ritual blessing. Attended by a dozen congregants and about twice that many pets or photographs of pets.
h. History and Status of Piano in Green Valley	It was agreed that we would donate the piano to The Lavender Restaurant in Green Valley since they have been keeping it for us for over 15 years. The Board will send them a card informing them of our decision.

Center for Spiritual Living Tucson
Board Minutes and Board Reports
April 19, 2018

9. TEAM REPORTS

ADMINISTRATION

Normal operations continue. Judy stuffs bulletins most weeks. We are grateful.
Submitted, Rev Janis

ALTARED STATES

All is well. Altared States looks forward to new members joining us (Magnificently, Po Lui-Frank)
Submitted, Sheila Campbell, Board Liaison & Team Member

BOARD OF TRUSTEES (MAY 5 PLANNING MEETING)

It was suggested that after “Beloved Community” we study “Wild Mind.” We will also make plans for the party after the conclusion of “Spiritual Economics” June 9 at Pat Master’s home.

BOOKSTORE

Holmes books \$70.90	Other books/mags \$284.90	Sunday CDs \$15	Music CDs \$0	Total \$370.80
-------------------------	------------------------------	-----------------	---------------	----------------

(By Wendie Arison) Submitted, Renee' Mezzone, Board Liaison

COMMUNITY BUILDERS/OUTREACH

Included in MarComm report this month.
Submitted, Mariann Moery, Board Liaison & Member

COMPASSIONATE HEART

Calls: 8	E-mails: 10	Card: 3	Meals: 2	Rides: 8	Visits: 3
----------	-------------	---------	----------	----------	-----------

Marita volunteered 12 hours at Sr Jose’s. Sr Jose's is planning an open house on April 26, which will be advertised in our newsletter. (Data reported by Wendie Arison)
Submitted, Leah Hamilton, Board Liaison & Team Member

ECCLESIASTICAL CORE

Nothing additional to report. Immense gratitude for our practitioners.
Submitted, Rev J

EDUCATION CORE

“Foundations of the Science of Mind” with 8 participants has concluded.
The Wednesday night series on Victor Shamas' *Deep Creativity* began in March and runs through April. It is being well attended.
Eight host homes and facilitators have self-identified for our upcoming Eric Butterworth *Spiritual Economics* book study which will be held in May. Facilitator training will be held April 17. Congregant sign-ups began in April.
Submitted, Rev J

Center for Spiritual Living Tucson

Board Minutes and Board Reports

April 19, 2018

EVENTS

Pet Blessing described in Old Business.

Date set for Fall PosiPaloosa, September 9, 7pm. Question asked, but not answered, on whether we can also have Daniel Nahmod do the Sunday service on September 9th.

Submitted Rev J

FACILITIES TEAM

Details of search in old business. Additional properties continue to come to our attention. Data gathering is proceeding on the costs and particulars of the various potential construction methods we might use should we decide to construct our own facility on our own property.

Submitted, Dick Laird, Board Liaison

FUNDING TEAM

Funding Team met April 3 at 1:30pm and reviewed the quarterly Range Reports and the first quarter budget, as well as discussed the Spiritual Economics home study groups.

Submitted, Dick Laird, Board Liaison

HOSPITALITY

The Hospitality Team hosted the March and April monthly potlucks quite successfully. My thanks to all that helped. Volunteers have been solicited for the May potluck.

Lunch Bunch: We skipped Lunch bunch in March so that everyone who was interested could attend the Pet Blessing. Carla Hodge continues as lead for Lunch Bunch.

Submitted, Dick Laird, Board Liaison

HOST TEAM

Nothing new, we rock on, as usual! We continue to modify the host script as the Board requests.

Submitted, Renee' Mezzone, Board Liaison

MARKETING AND COMMUNICATIONS TEAM

Normal operations continue. Natural Awakenings advertising inputted. Facebook community continues to grow, as does the e-newsletter.

Improvements to the website content have begun. Organizational Documents have been 'organized', the current Board of Trustees photographs and biographies have been posted. The ssl license has been acquired and installed which will improve our searchability.

Gathering data on those who actually open the e-newsletter has been completed. Now the team moves to comparing those with the Science of Mind magazine subscribers list to determine the number of potential new contacts that can be invited to participate with us.

Submitted, Mariann Moery, Board Liaison

MEMBERSHIP

Pat Masters has agreed to resume facilitating membership classes. There were no takers for membership #1 class on April 8. One congregant, who had expressed interest, decided to wait and take Foundations instead. Membership #2 class will be offered following the completion of Foundations (on April 23.)

Submitted, Pat Masters, Board Liaison

Center for Spiritual Living Tucson

Board Minutes and Board Reports

April 19, 2018

MINISTER'S TRAVEL PLANS

Rev J attended the ordination of one of her peers in March, and arranged a guest speaker for that Sunday, even though she was in attendance.

She intends to apply for the Minister's Ongoing Education Conference, which is held in Seattle in August. A limited number of ministers are selected, only 26 in total. There is no cost to the Center for her to attend this informational gathering.

Submitted, Rev J

MUSIC/SOUND

At least once/month, we have our fabulous volunteer vocalists from our congregation. We are so blessed by the commitment and generosity of our Music Team. We are also appreciative of the time and talent that our 'in-house Orchestra' shares with us each Sunday. We recognize the commitment of the Orchestra and the tenacity required to find substitutes when the orchestra members are out of town.

We celebrated with a guest vocalist in March, Amber Ikeman. David Prouty has been soliciting for guest musicians and has identified one in October (Karie Hillary) and one in January 2019 (Cerise Patron).

PosiPalooza is presently scheduled for September 9 at 7pm. We will feature Daniel Nahmod with Sue Riley and Richard Mekdeci. No other details are available at this time.

Submitted, Rev J

NEWCOMERS TEAM

NewComers Team welcomed 8 guests who agreed to sign the guest book in March. Four found us on the internet, two came from other CSLs and two did not indicate how they found us. Unlike previous months, six of these individuals have returned at least once, and several are attending Wednesday night classes.

Submitted, Sheila Campbell, Board Liaison

PRACTITIONER CORE

Practitioners conducted our First Annual Pet Blessing, which was well received by a dozen individuals and their various pets. Some individuals brought photographs instead of the actual pet. They will be offering Spiritual Tune-ups during the April 1 First Sunday Potluck.

Submitted, Rev J

SACRED CINEMA

March's movie was "Yes Man" on March 22 with 9 in attendance. April's film: "The Imitation Game". (Tom Bacon, lead)

Submitted, Pat Masters, Board Liaison

SMALL GROUPS/CIRCLES

Small circles continue to generate new ideas. Emerging Artists' Group continues, and is planning to participate in the Tucson Open Studio Fall Tour. Our Men's Circle decided to try a breakfast meeting at Rincon Market, and it seems to be working. The Monday morning meditation group, while small, continues to meet.

Plans are moving forward on the in-home book study groups, which will read and discuss Eric Butterworth's *Spiritual Economics*. Eight host homes have self-identified, in addition to a group meeting at the office and one on-line. Most of the hosts will also facilitate this year. Facilitation

Center for Spiritual Living Tucson
Board Minutes and Board Reports
April 19, 2018

guidelines will be provided mid April and instructions to host homes have already been provided to those interested in hosting a group.

Submitted, Mariann Moery, Board Liaison

USHERS

"No news is good news" on our team! We're fully staffed and flexibly swapping dates as needed. I am encouraging the Ushers and Newcomer Team to ensure quiet in the sanctuary when service starts; the Host doesn't need competition from the lobby. There are a number of polite, non-offensive ways to do this and I'm sharing them with both teams; no one realized how much sound carries into the auditorium! That's all I've got, Donna (Hall)

Submitted, Leah Hamilton, Board Liaison

VIDEOGRAPHY TEAM

Nothing to report at this time.

Submitted, Leah Hamilton Board Liaison

VISION CORE

Vision Core Notes, begun 4 April 2018, 6:30pm.

In attendance: Leah Hamilton RScP, Marya Wheeler, Chris Wheeler, Barbara McGill and Rev Janis Farmer

Participating virtually: Anna Mello-Lewis, Shelly Dunn, Carol Nigut

What is the highest vision, the highest ideal, for Center for Spiritual Living Tucson?

Hands of two people one left, one right touching each other to make a bird flying; Cowboy hat, iron gate, LeRoy Neiman (artist) painting with big bold colors, flow, black top; Birds rising to the heavens (doves, peace); A loving center; Mist clearing from the sky, tulips; Fountains bubbling over, sunlight on water, bright colors, moonlight on water; The love pulse of each individual is felt and the pulse of the group, beautifully & naturally get in sync to create the harmonious, expansive rhythm that is known as CSLTucson; Joyous celebration of the abundant life expressing through our burgeoning congregation which fills our perfect space and radiates into the larger community.

What changes, evolves, becomes, (releases, moves aside, ...) as this vision comes into being?

Not looking back to yesteryear. (Thousands of people's heads facing a light source); Fluffy clouds in the sky, moving, new attitude, earthen (feeling); Love, red flowers, Eddys circulating/swirling on different sections of a whorl; Clear channel, releases contraction, release judgment, lets go of 'holding'; Randomness departs, surge in fellowship, veil lifts; Padlock opens, open gates, wide open spaces; Lovingly ask/contemplate reflective questions which create clarity & deeper understanding. What's in the gap? What is the why? What is mine to be, give, do?..... Rise & Go Forth in live & light!; Our perfect home appears and creates a container that holds us safe as we grow into our greater selves.

Is there anything else that wants to be known?

Looking forward with openness; flowers, candy mountain, white pony, tumbleweeds, earth and sky, horizon vibrant orange; It's happening!, changes are underway that will promote our growth!. I claim it.

Center for Spiritual Living Tucson
Board Minutes and Board Reports
April 19, 2018

I know it; Acceptance and trust; Deep blue, 'piece of property, piece of prosperity'; All the pieces are in place, you have what you need; Saw a Jack-in-the-Box....Play, have fun and be pleasantly surprised with what pops up!

Submitted, Rev J

YOUTH MINISTRY

On hold, pending interest (and training) of prospective teachers.

Submitted, Sheila Campbell, Board Liaison

10. NEW BUSINESS FOR THIS MEETING

A. The 2018 Planning Cycle for review and discussion.

a. Look at Planning Cycle with Fresh Eyes

Draft Planning Cycle Board Activities by Month

April/May - At May Planning Meeting, identify qualified prospective board members.

Action: Rev J to compile list from membership lists and class completion lists for May planning meeting.

B. Schedule for next Planning Meeting? Board book study, May 3 at 7pm. Topic: *Creating the Beloved Community* book study continues.

C. Review of Policy on Non-Certificated Classes.

D. Other New Business for This Meeting: None

Tabled/Deferred/Parking Lot (Not to be forgotten, or for deciding later):

Soliciting qualified prospective board members	Discussion set for the May planning meeting. (Also schedule meet-and-greet lunch for interested future board members and current Board in July)
Class on Consensus Decision Making	Rev Donald offered to facilitate an open class on Consensus Decision Making. His intention is to capture the class on video for his future potential use. Board agreed, with the stipulation that we would retain one copy of the video for CSLT exclusive use. Response was presented to Rev Donald & awaits his decision and future action.
Community-wide Electronic Survey	Decided to do congregation-wide electronic survey this year. Create it this summer, administer/launch it in the fall (before or after the Annual Meeting?)

12. NEW BUSINESS ITEMS FOR NEXT/FUTURE MEETING(S)

- Marketing (what are we doing, and what can we do that we are not.) Discussion continues.

13. SIX MONTH LOOK AHEAD ON CALENDAR (Calendar starts on page 12.)

14. GRATITUDES

Date	Honoree
4/15	Infrastructure
4/22	The Earth
4/29	Facilitators and Hosts for Book Study
5/6	Birthdays and anniversaries
5/13	Mother's Day

Center for Spiritual Living Tucson
 Board Minutes and Board Reports
 April 19, 2018

5/20	Compassionate Heart
5/27	Hosts

15. NEXT BOARD MEETING

May 17, 6:30pm

16. BOARD SOCIAL/PLANNING MEETING

May 3, 7pm

17. REVIEW CIAB SCHEDULE

Date	Responsibility
4/15	Pat/Sheila
4/22	Renee/Leah
4/29	Sheila/Sheila
5/6	Dick/Dick
5/13	Renee/Leah
5/20	Renee/Mariann
5/27	Pat/Leah

18. LEAD-ARTICLE FOR NEWSLETTER SCHEDULE

Due When?	Who? (topic)
4/15	Sheila
4/22	Rev J
4/29	Mariann
5/6	Leah
5/13	Renee'
5/20	Dick
5/27	Pat

NORMAL ROTATION: MARIANN → LEAH → RENEE → DICK → PAT → SHEILA → REV J →

19. ADJOURN AND PRAY OUT

Center for Spiritual Living Tucson
Board Minutes and Board Reports
April 19, 2018

April	APR 1 Potluck Sunday (Easter)	2 Foundations 11 Catalina Creatives Gp Mtg/Potluck	3 Funding Tm 1:30p ContempApps (6) 6:30p (online)	4 Deep Creativity 2	5 Vision Core 6:30pm Board Planning Mtg 6:45pm	6	7
	8 Membership Class #1	9 Foundations 12	10	11 Deep Creativity 3	12	13	14
	15 Lunch Bunch	16 Foundations 13	17	18 Deep Creativity 4	19 Board Mtg, 6:30p	20	21
	22 Cinema -The Imitation Game	23 Membership #2	24	25 Deep Creativity 5	26	27	28
May Spirit.Econ.Home Gps	29	30	MAY 1 Funding Team 1:30p	2	3 Vision Core 6:30pm	4	5
	6 Potluck Sunday	7	8	9	10	11	12
	13	14	15	16	17 Board Mtg, 6:30p	18	19 Compassionate Heart Tm Mtg 1:30p
	20 Lunch Bunch	21	22	23	24	25	26
	27 Cinema	28	29	30	31	JUN 1	2
June	3 Potluck Sunday	4 TBD	5 Funding Team 1:30p TBD	6 Crossroads of Should & Must (1) - S.Dunn	7 Vision Core 6:30pm	8	9 Practical Metaphysics (1) - K.Gorley 10-11:30am
	10	11	12	13 Crossroads of Should & Must (2) - S.Dunn	14	15	16 Practical Metaphysics (2) - K.Gorley
	17 Lunch Bunch	18	19	20 Crossroads of Should & Must (3) - S.Dunn	21 Board Mtg, 6:30p	22	23 Practical Metaphysics (3) - K.Gorley
	24 Cinema	25	26	27 Crossroads of Should & Must (4?) - S.Dunn	28	29	30 Practical Metaphysics (4) - K.Gorley

Center for Spiritual Living Tucson

Board Minutes and Board Reports

April 19, 2018

July	1 Potluck Sunday	2	3 Funding Team 1:30p	4 Four Agreements (1)	5 Vision Core 6:30pm	6	7 Practical Metaphysics (5) - K.Gorley
	8	9	10	11 Four Agreements (2)	12	13	14 Practical Metaphysics (6) - K.Gorley
	15 Lunch Bunch	16	17	18 Four Agreements (3)	19 Board Mtg, 6:30p	20	21 Practical Metaphysics (7) - K.Gorley
	22 Cinema	23	24	25 Four Agreements (4)	26	27	28 Practical Metaphysics (8) - K.Gorley
	29 Prospective Board Member Lunch	30	31	Aug 1	2 Vision Core 6:30pm	3	4 Practical Metaphysics (9) - K.Gorley
August	5 Potluck Sunday	6	7 Funding Team 1:30p	8	9	10	11 Practical Metaphysics (10) - K.Gorley
	12	13	14	15	16 Board Mtg, 6:30p	17	18
	19 Lunch Bunch	20	21	22	23	24	25
	26 Cinema	27	28	29	30	31	Sept 1
Sept 2018	2 Potluck Sunday	3	4 Funding Team 1:30p	5	6 Vision Core	7	8
	9 PosiPaloosa 7pm	10	11	12	13	14	15
	16 Lunch Bunch	17	18	19	20 Board Mtg, 6:30p	21	22
	23 Cinema	24	25	26	27	28	29
	30	Oct 1	2	3	4	5	6

Annual Meeting, Oct 7. Notifications must go out by Sept 15.